



FOR SALE

915 S Trooper Road

NORRISTOWN, PA 19403

Building Size:

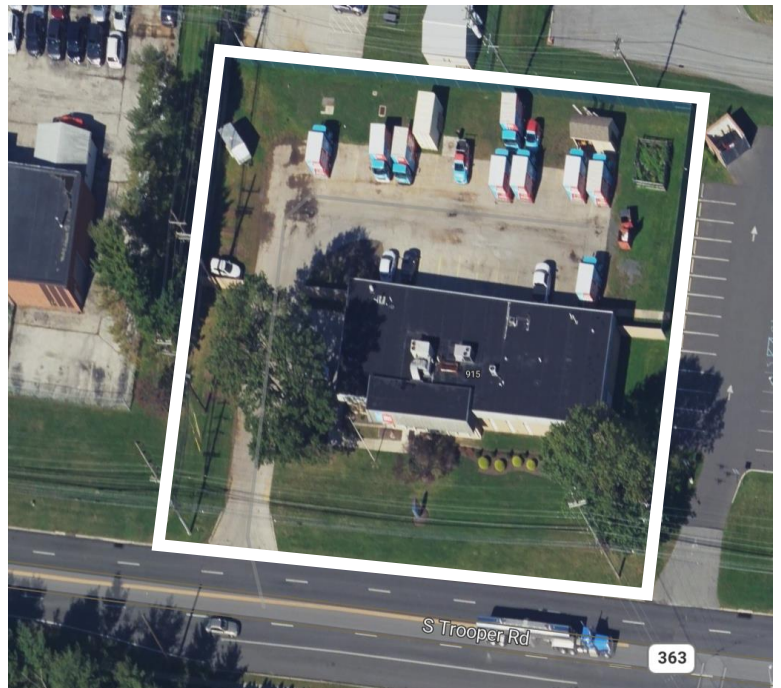
6,325 SF

Lot Size:

1.29 Acres

Property Highlights:

- Fenced outside storage
- 40' x 8' trailer storage
- Remodeled in 2022
- Zoning: IP Lower Providence
- No Business Privilege Tax
- 225' frontage along Trooper Road (Rt 363)



For information, please contact:

Tim Brogan

Senior Managing Director

t 610-879-4507

timothy.brogan@nmrk.com

1000 Continental Drive, Suite 200

King of Prussia, PA 19406

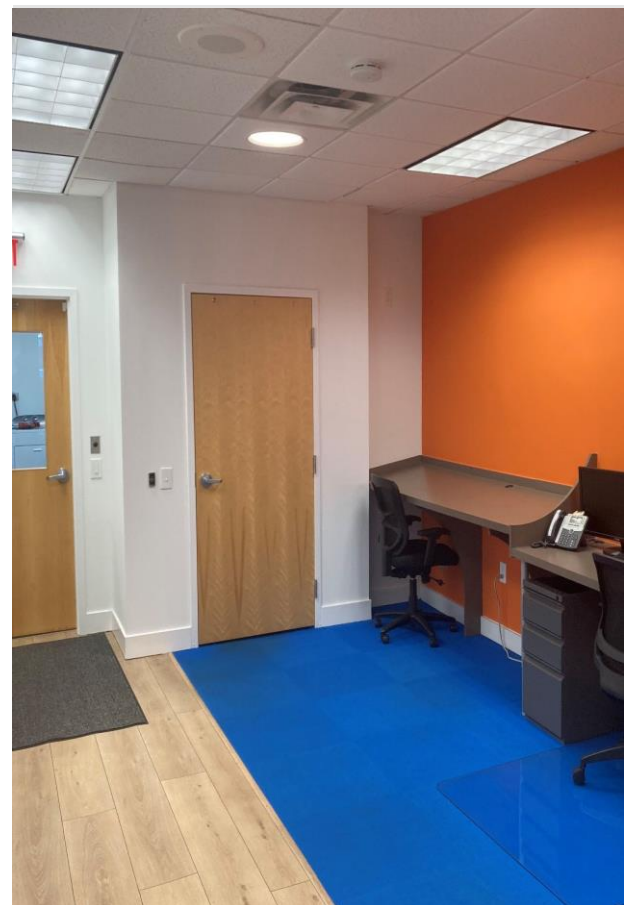
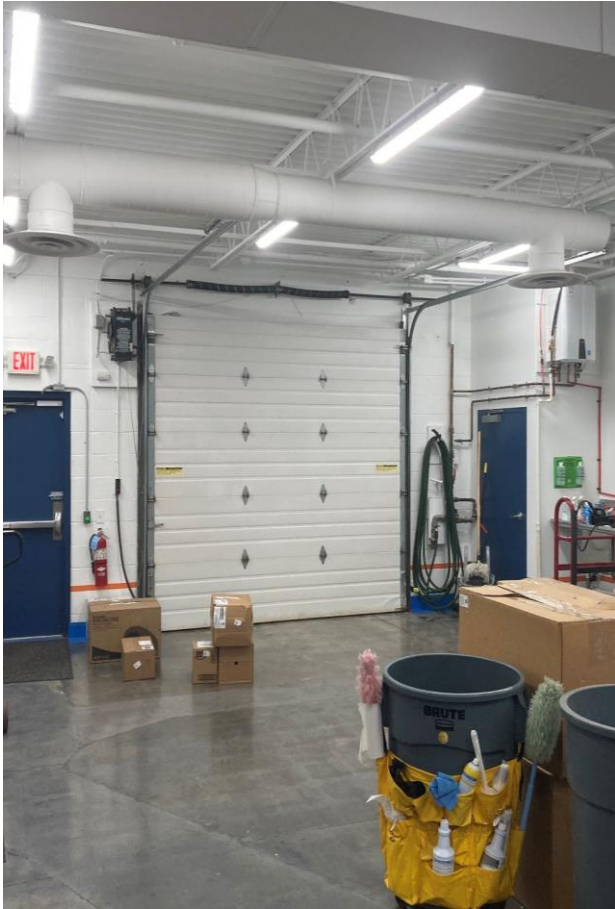


nmrk.com

NEWMARK

Licensed in Pennsylvania as Newmark Real Estate

The information contained herein has been obtained from sources deemed reliable but has not been verified and no guarantee, warranty or representation, either express or implied, is made with respect to such information. Terms of sale or lease and availability are subject to change or withdrawal without notice.





Ideal Location

- Less than one (1) mile to Route 422
- Less than three (3) miles to Route 202
- Less than four (4) miles to:
 - King of Prussia Interchange for I-76 (Schuylkill Expressway) and I-276 (PA Turnpike)
 - Norristown Borough
 - King of Prussia