



For Lease

RETAIL SPACE ACROSS FROM TANGER OUTLETS

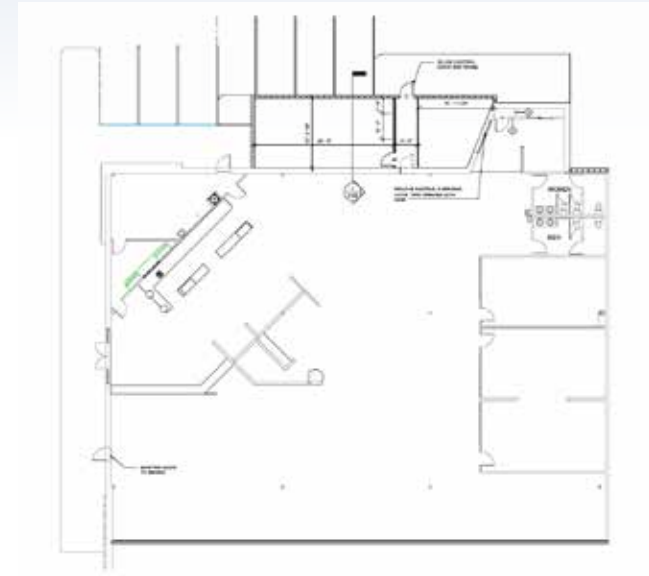
4952 Centre Pointe Drive Suite 116
North Charleston, SC 29418



COLDWELL BANKER
COMMERCIAL
ATLANTIC

Brent Case, CCIM
(C) 843.270.4192
bcase@cbcatlantic.com

Hannah Kamba
(C) 843.697.8168
hkamba@cbcatlantic.com



OFFERING SUMMARY

Lease Rate:	\$16 PSF
Total Available:	5,000 SF - 11,074 SF
Lease Type:	NNN
NNN:	\$5.19 PSF
Municipality:	Charleston

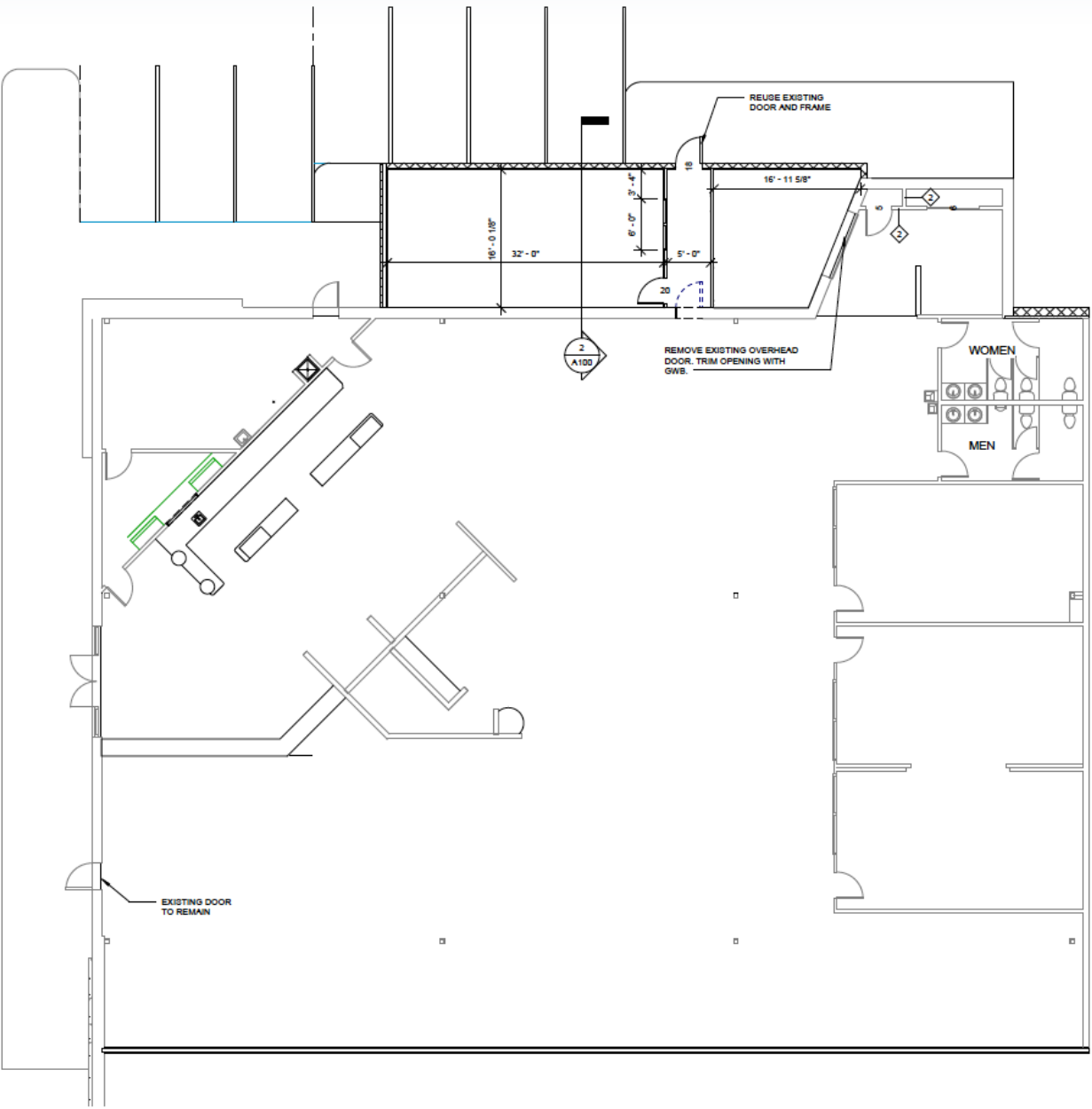
PROPERTY OVERVIEW

CBC Atlantic presents 11,074 sq. ft of open Retail space directly next to Paul Mitchell School and adjacent to the newly opened Sportsman Warehouse and La-Z-Boy and Conn's HomePlus. This property is located in the largest Retail hub in the Charleston area located directly across from Tanger Outlets which includes multiple national brands. This center is also in close proximity to a large selection of restaurants within Tanger that include Jim N' Nicks, Chipotle, Chick-Fil-A and Five Guys. This an ideal location for another Retail user looking to capitalize on the high amount of traffic in the area and incredible tenant mix within Tanger. This property is also less than five minutes from Boeing, the North Charleston Convention Center and Charleston International Airport which continues to set records for the number of passengers passing through annually.

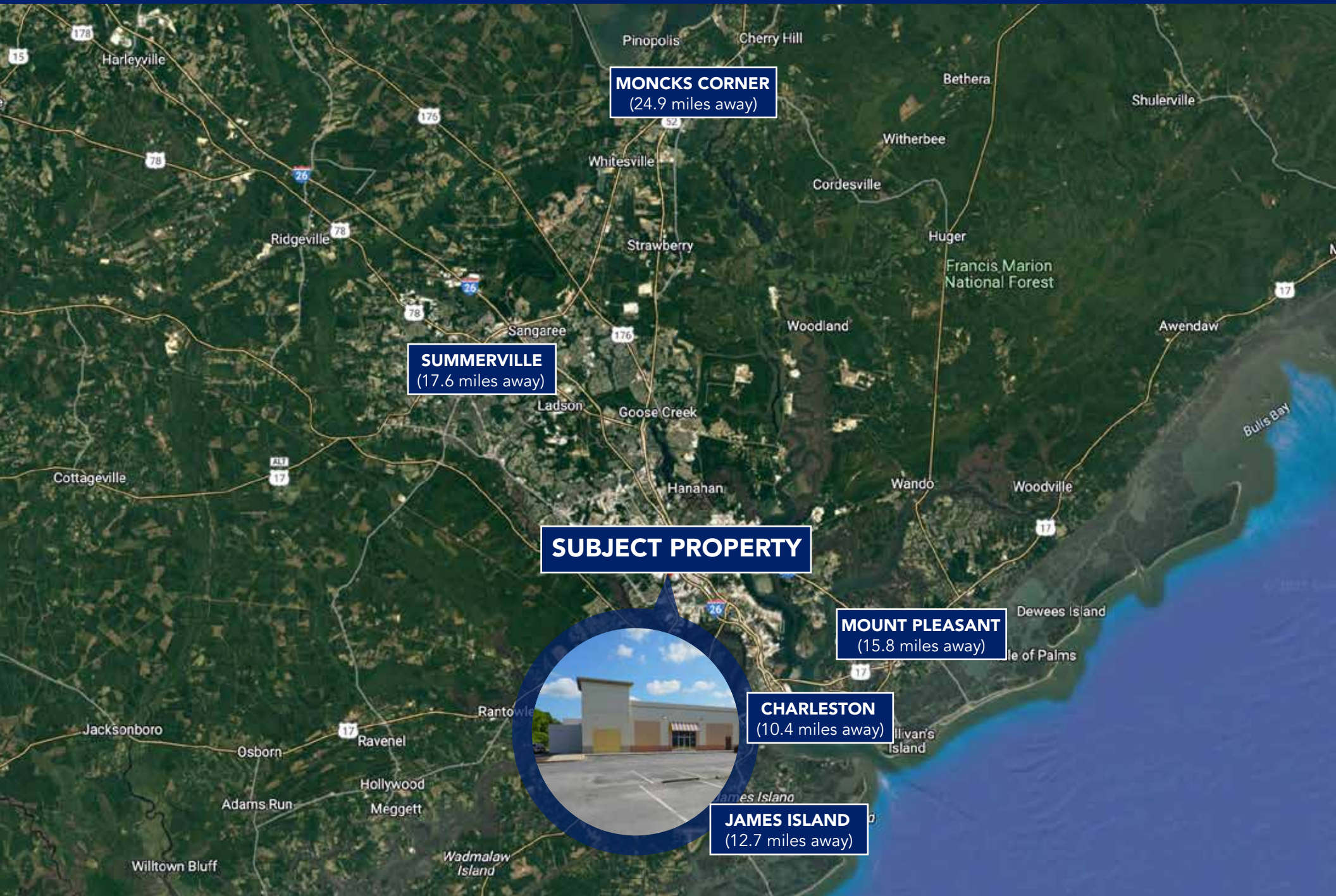
PROPERTY HIGHLIGHTS

- 24,300 VPD SCDOT 2021 at International Blvd

4952 CENTRE POINTE DRIVE SUITE 116 | NORTH CHARLESTON, SC



LOCATION MAP



SUBJECT PROPERTY

MONCKS CORNER
(24.9 miles away)

SUMMERVILLE
(17.6 miles away)

MOUNT PLEASANT
(15.8 miles away)

CHARLESTON
(10.4 miles away)

JAMES ISLAND
(12.7 miles away)



COLDWELL BANKER
COMMERCIAL
ATLANTIC

4952 Centre Pointe Drive Suite 116 | North Charleston, SC

FOR LEASE: RETAIL SPACE ACROSS FROM TANGER OUTLETS



- 7 Minutes to Charleston International Airport
- 18 Minutes to Downtown Charleston
- 25 Minutes to Downtown Summerville

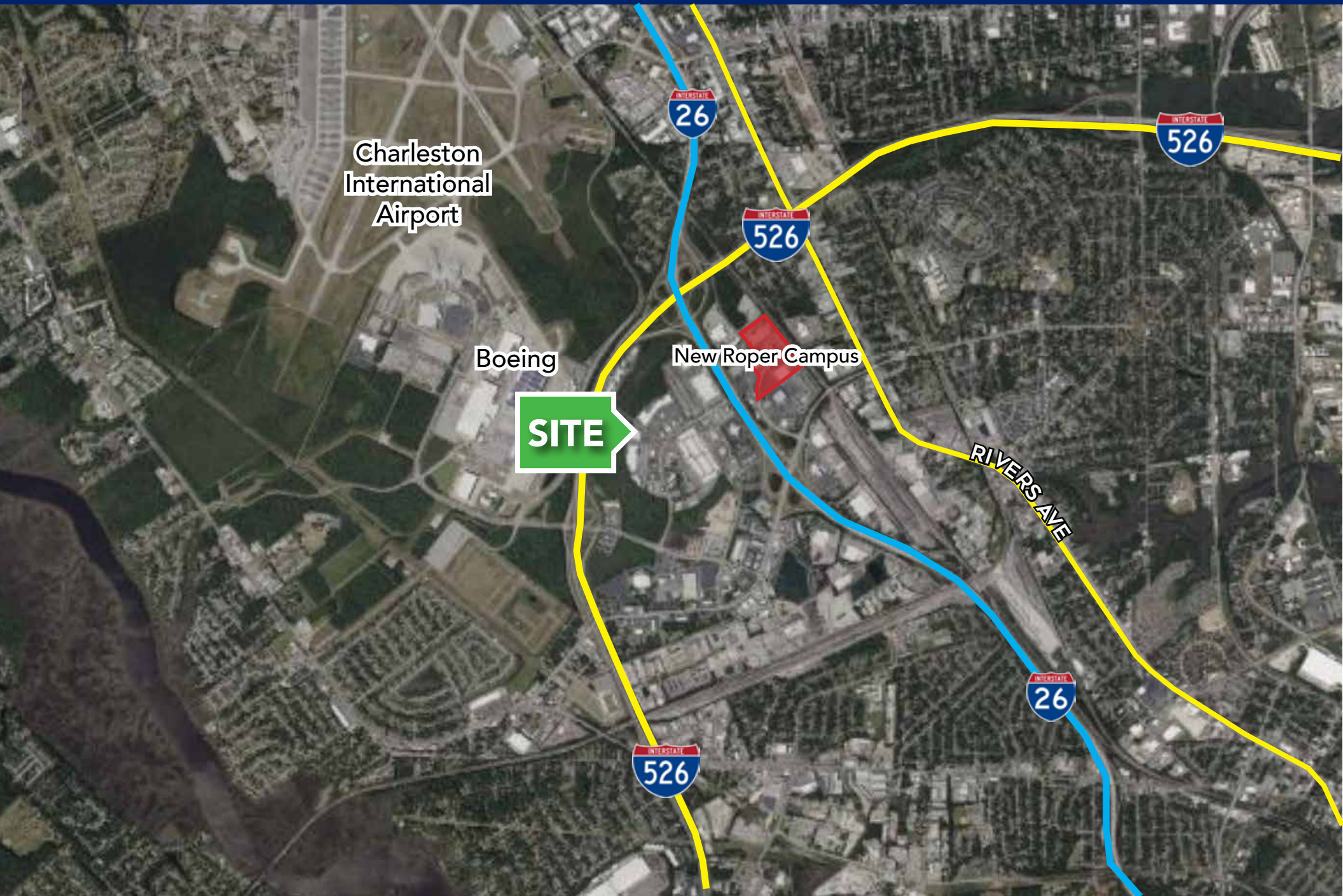


COLDWELL BANKER
COMMERCIAL
ATLANTIC

4952 Centre Pointe Drive Suite 116 | North Charleston, SC

FOR LEASE: RETAIL SPACE ACROSS FROM TANGER OUTLETS

AREA MAP



**COLDWELL BANKER
COMMERCIAL**
ATLANTIC

4952 Centre Pointe Drive Suite 116 | North Charleston, SC

FOR LEASE: RETAIL SPACE ACROSS FROM TANGER OUTLETS

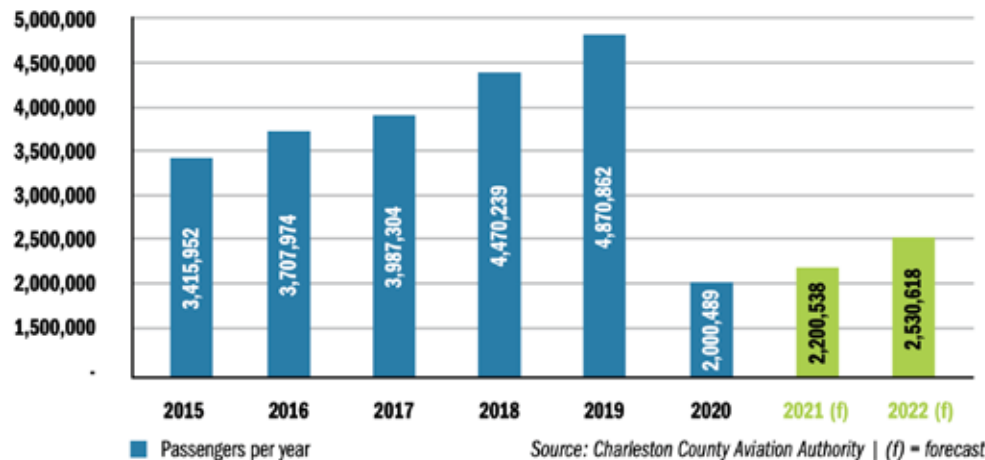
AREA RETAILERS



CHARLESTON INTERNATIONAL AIRPORT \$700M EXPANSION



- \$700 million expansion plan for Charleston International Airport.
- Plans include new wing with six gates, multistory parking deck, expanded ticket hall and move its overnight aircraft parking area.
- 2022 Charleston's passenger count: 5.32 million
- Passenger count to double by 2041 to 9.83 million.
- Boeing Manufacturing and Design Headquarters

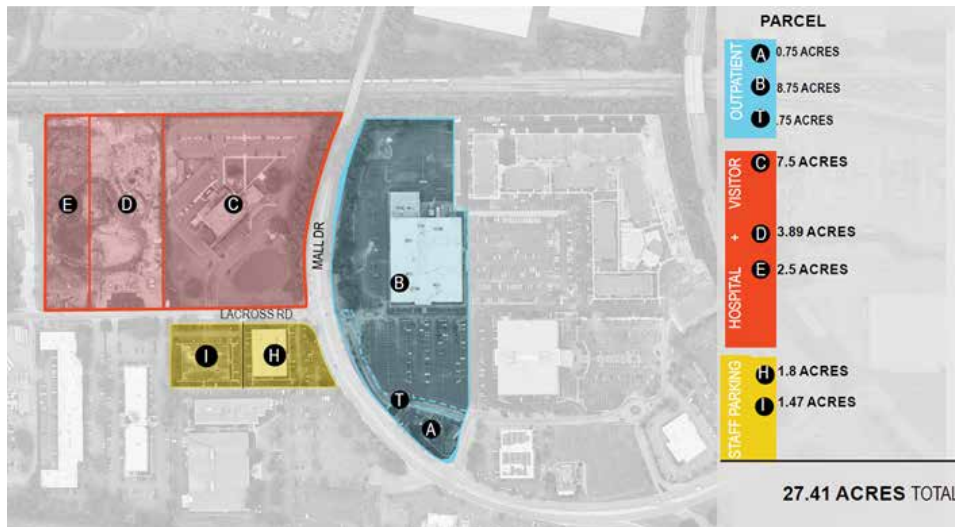


Source: https://www.postandcourier.com/business/real_estate/charleston-greenville-airports-press-sc-lawmakers-for-nearly-700m-to-fund-expansions/article_14827a9a-998f-11ed-9482-1f707977be89.html

NEW ROPER HOSPITAL MEDICAL CAMPUS



- \$1 billion project will be one of the largest, most advanced healthcare construction projects on the East Coast
- New campus will occupy 27-acres near Interstates 26 and 526
- Relocation of Roper St Francis location from Downtown Peninsula
- Will include: Full-service acute care hospital, 24-hour Emergency Room, Medical Office Building
- This new campus will be the fourth location for Roper Hospital since it opened downtown in 1856



Source: <https://www.rsfh.com/News/NewRoperHospitalMedicalCampustobeparadigmforprovidinghealthcare>

ECONOMIC DRIVERS: MULTIFAMILY IMMEDIATE MILE UNDER DEVELOPMENT





- SC Ports is the eighth largest port in the United States
- In addition to Charleston, the Authority owns and operates public seaport facilities in Georgetown with an Inland Ports in Greer.
- They handle international commerce valued at more than \$75 billion annually
- Charleston Harbor is the Deepest Port on the East Coast



Bosch: Invests \$260 million on developing an electric motor production line at its North Charleston facility

Boeing: The 265-acre (107-hectare) site is located on the southern portions of the joint-use Charleston Air Force Base and Charleston International Airport located in the city of North Charleston, SC.

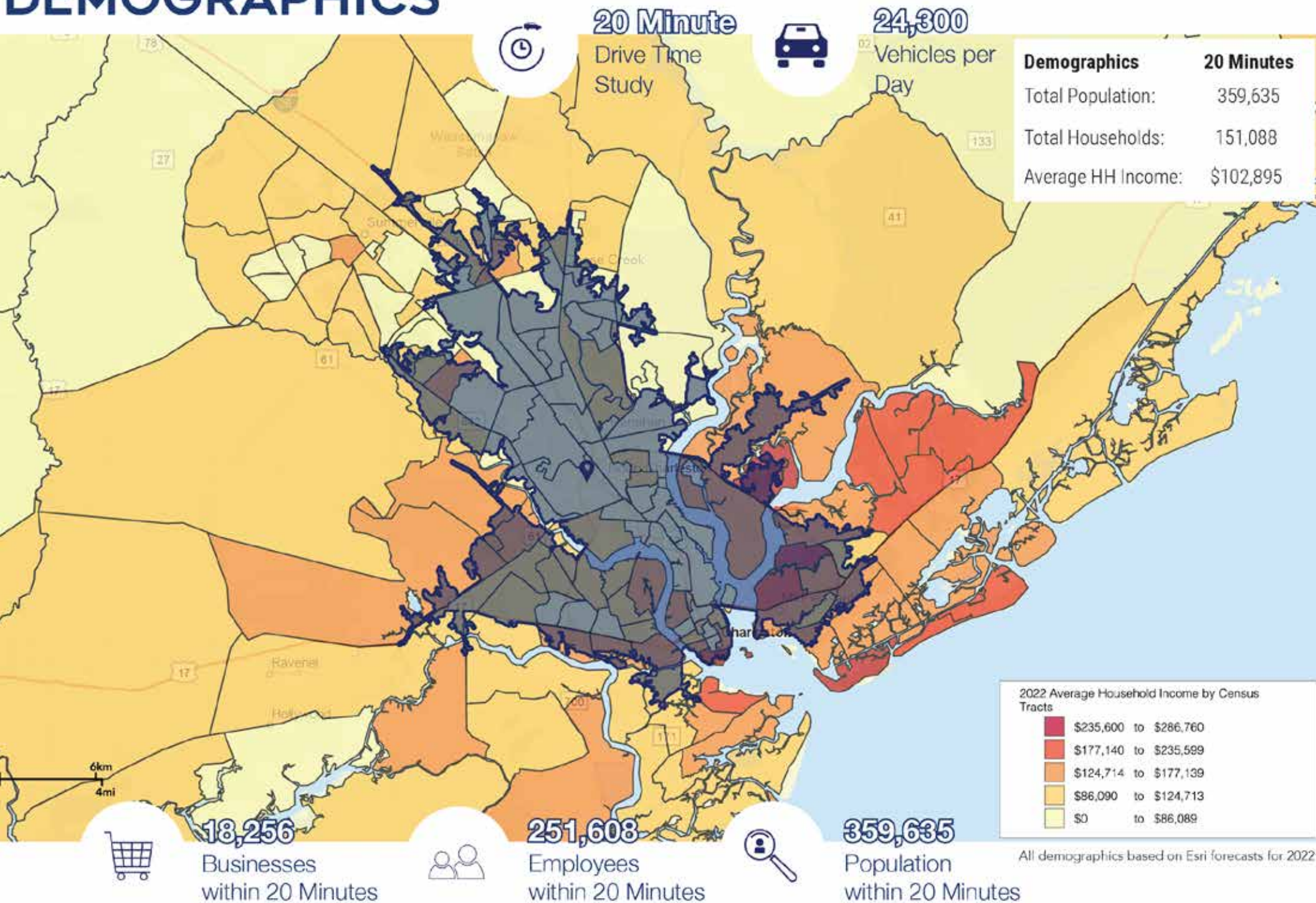
Volvo: Volvo Cars is investing an additional \$520 million in its Berkeley County, SC operations and creating 1,910 new jobs. This expansion adds to the company's initial 2015 announcement and brings the collective total investment at the Charleston site to more than \$1 billion and 3,900 jobs.

BMW: BMW Invest \$1.7B to expand SC manufacturing capacity and footprint which will create 300 jobs and prepare for production of electric vehicles

Mercedes: Located in North Charleston since 2006, Mercedes Bens Vans assembles the worlds leading large van. This location had assembled more than 200,000 Sprinter and Metris vans, which have been delivered across the US. \$60M investment in Electric versatility platform for next generation eSprinter van in 2023. The eSprinter van will be built in three locations: North Charleston, Düsseldorf and Ludwigsfelde in Germany.

Walmart Distribution Center: Walmart Opens \$220M Distribution Center in South Carolina. The center will sort and store imported goods arriving through the Port of Charleston for distribution to 850 Walmart and Sam's Club locations across the Southeast.

DEMOGRAPHICS





Brent Case, CCIM

(C) 843.270.4192

bcase@cbcatlantic.com

Hannah Kamba

(C) 843.697.8168

hkamba@cbcatlantic.com



**COLDWELL BANKER
COMMERCIAL
ATLANTIC**

3506 W Montague Ave Suite 200

North Charleston, SC 29418

843.744.9877

cbcatlantic.com | cbcretailatlantic.com

This information has been obtained from sources believed reliable but has not been verified for accuracy or completeness. Coldwell Banker Commercial Atlantic makes no guarantee, representation or warranty and accepts no responsibility or liability as to the accuracy, completeness, or reliability of the information contained herein. You should conduct a careful, independent investigation of the property and verify all information. Any reliance on this information is solely at your own risk.

The information contained herein should be considered confidential and remains the sole property of Coldwell Banker Commercial Atlantic at all times. Although every effort has been made to ensure accuracy, no liability will be accepted for any errors or omissions. Disclosure of any information contained herein is prohibited except with the express written permission of Coldwell Banker Commercial Atlantic.