

RAW LAND ASSEMBLAGE

3135 - 3199 Marjan Drive | Doraville, GA 30340

Undo

Center

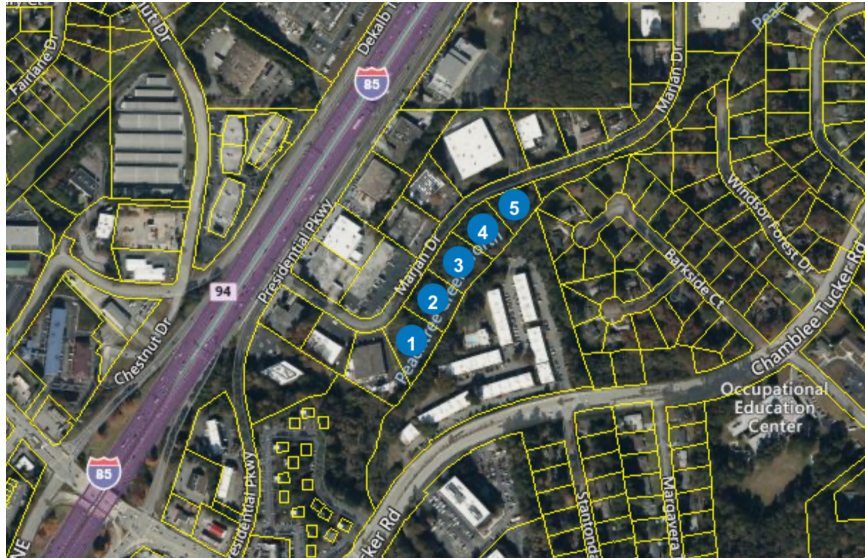
+

-



**ATLANTA LEASING
& INVESTMENT**

4.82 Acres Total



RAW LAND ASSEMBLAGE

±4.82 Acres Total

OFFERING PRICE \$250K

ADDRESS 3135, 3147, 3161, 3175, 3199 Marjan Drive
Doraville, GA 30340

AREA ±4.82 acres of undeveloped land

ZONING [City of Doraville,
Light Industrial District](#)

SALES HIGHLIGHTS

- Located right off intersection between I-85 and I-285
- Zoned Light Industrial
- Within Dekalb County
- 4.82 acres of raw land
- Near busy commercial corridor (Shell Station, Quicktrip, McDonalds and Waffle House)
- Five land parcels included: Tax ID's: 18 283 01 100, 18 283 01 099, 18 283 01 098, 18 283 01 097, 18 283 01 096

EXECUTIVE SUMMARY

Atlanta Leasing Investment is pleased to offer 3135 - 3199 Marjan Drive (the "Property") for purchase. The Property is an assemblage of 5 undeveloped land parcels, totaling +/- 4.82 acres.

3135 - 3199 MARJAN DRIVE, DORAVILLE, GA 30340

▶ 803.760.3631

▶ AtlantaLeasing.com/3195Marjan



**ATLANTA LEASING
& INVESTMENT**

POPULATION

Radius

1-Mile

3-Mile

Population

8,507

119,139

INCOME

Radius

1-Mile

3-Mile

Median HH Income

\$47,371

\$63,457

3135 - 3199 MARJAN DRIVE, DORAVILLE, GA 30340

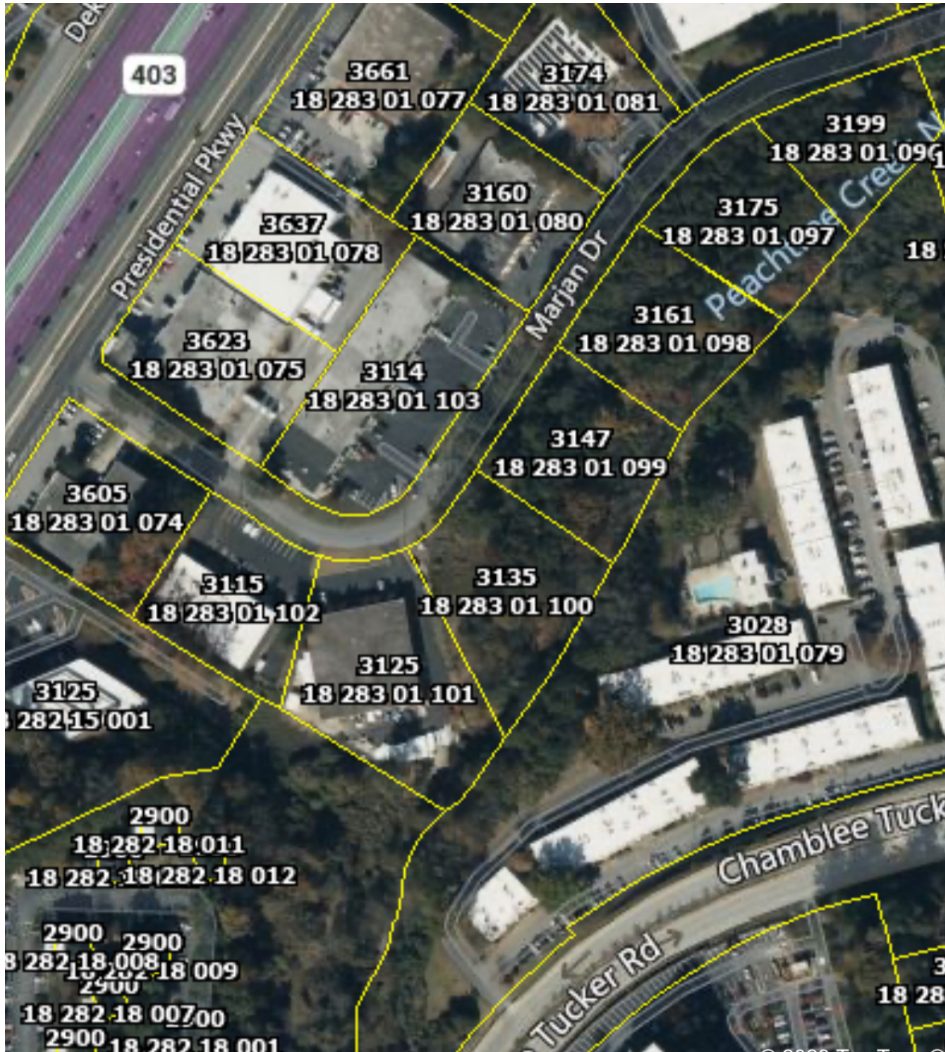
▶ 803.760.3631

▶ AtlantaLeasing.com/3195Marjan

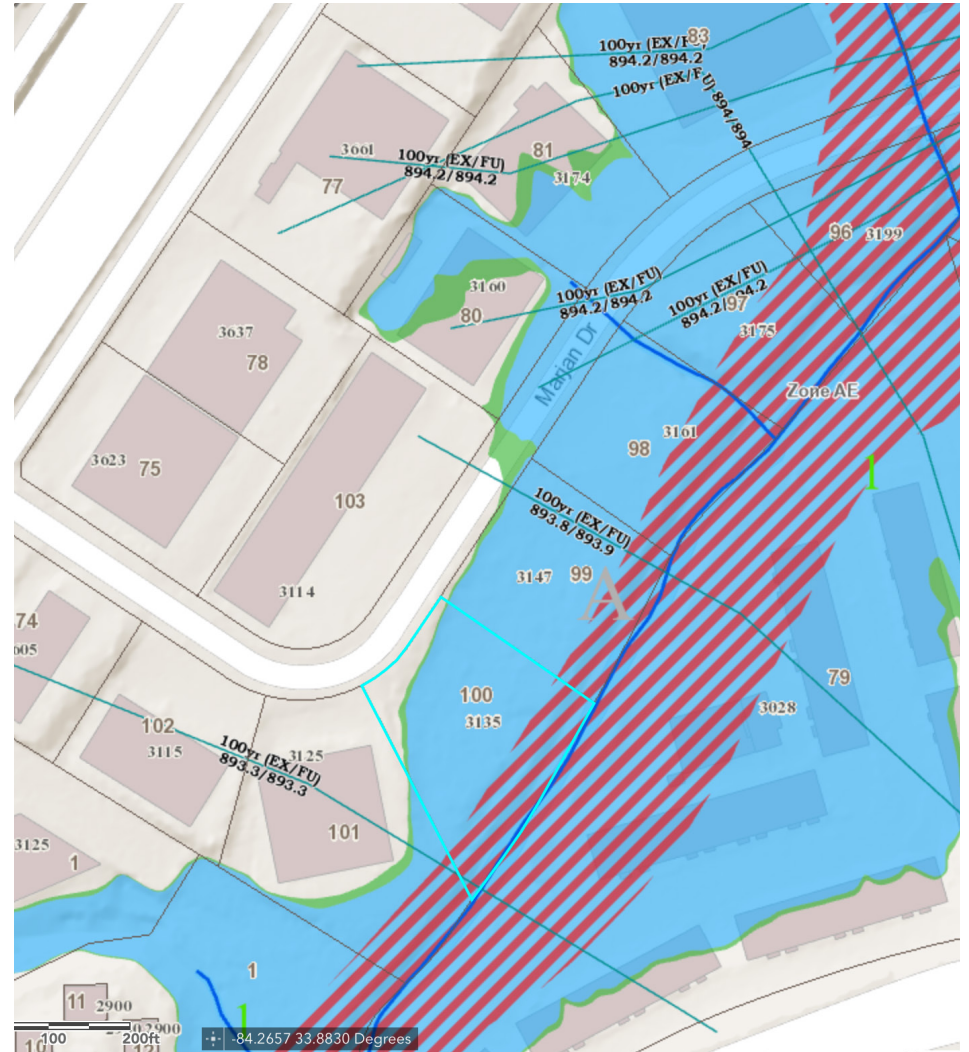


**ATLANTA LEASING
& INVESTMENT**

MAPS



Map with parcel IDs



Map with flood zone

3135 - 3199 MARJAN DRIVE, DORAVILLE, GA 30340

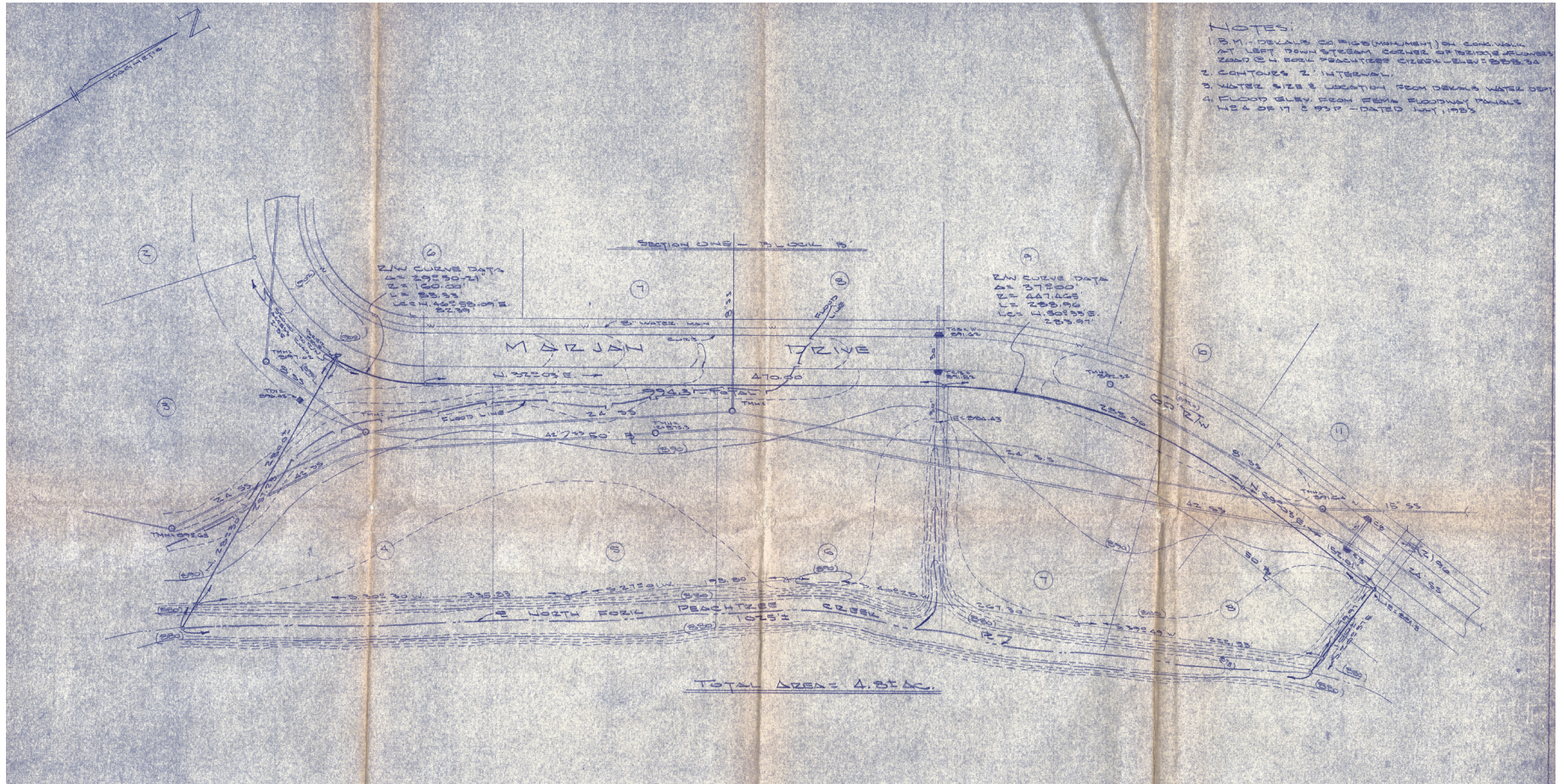
▶ 803.760.3631

▶ AtlantaLeasing.com/3195Marjan



ATLANTA LEASING
& INVESTMENT

SURVEY PLAN



3135 - 3199 MARJAN DRIVE, DORAVILLE, GA 30340

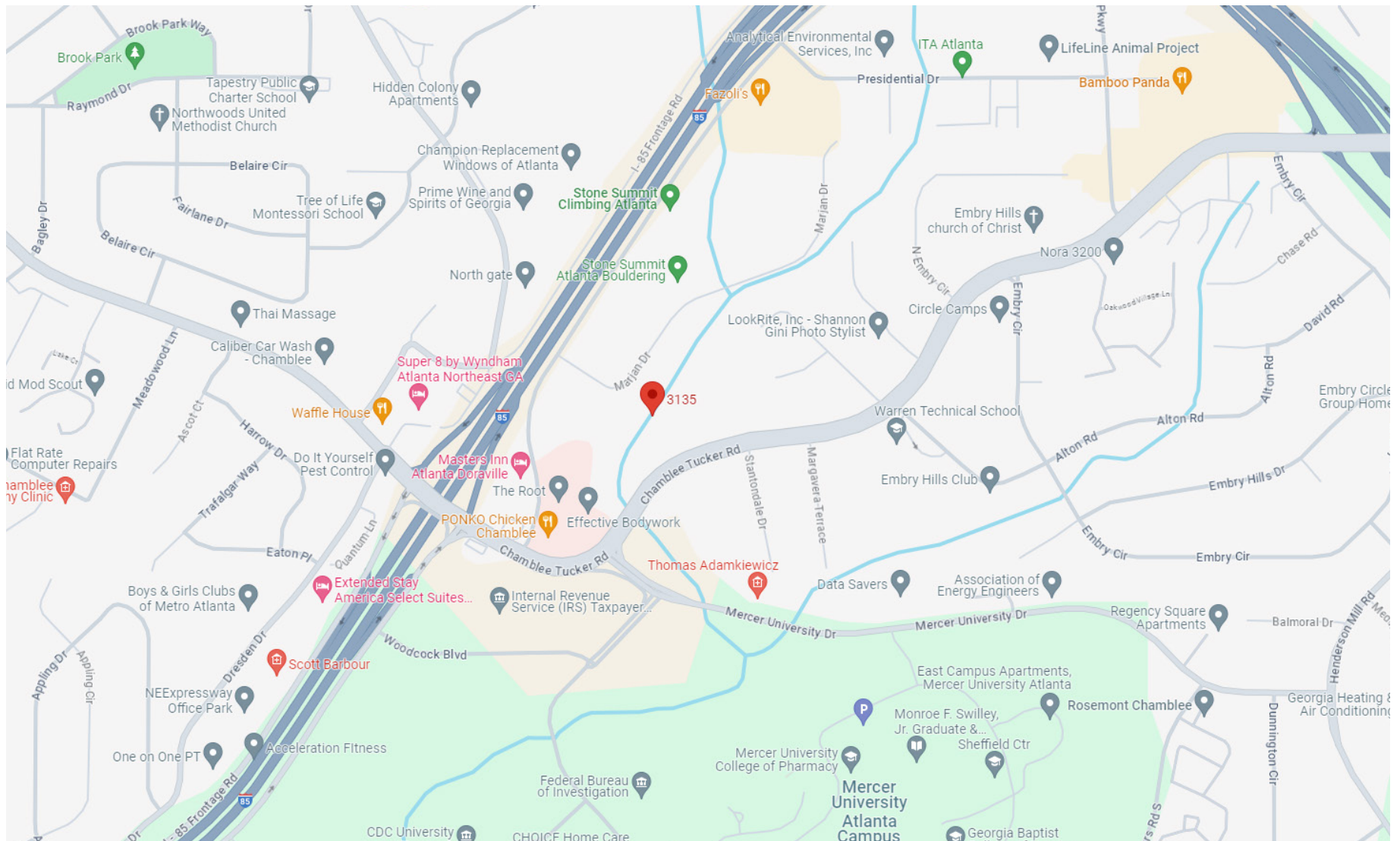
▶ 803.760.3631

▶ AtlantaLeasing.com/3195Marjan



**ATLANTA LEASING
& INVESTMENT**

AREA RETAIL MAP



**ATLANTA LEASING
& INVESTMENT**

DAVID AYNES
Managing Broker
404-348-4448
Dave@AtlantaLeasing.com

DREW McDUFFIE
Leasing & Sales Associate
404-348-4448
Drew@AtlantaLeasing.com