

4250 W. ALEXIS RD.

4250 W. ALEXIS RD., TOLEDO, OH 43623

PROPERTY SUMMARY

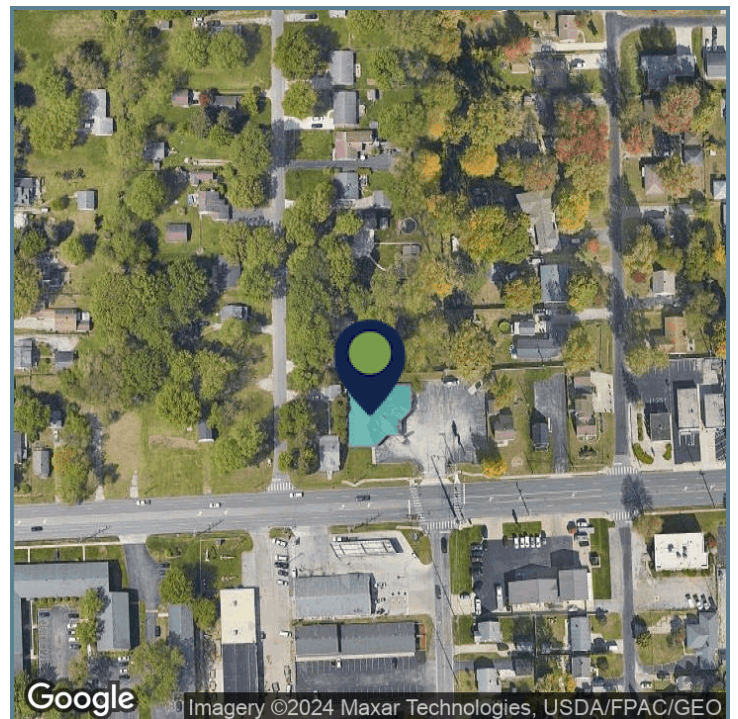


PROPERTY DESCRIPTION

Uncover the potential of 4250 W. Alexis Rd., a premier leasing opportunity for retail or commercial ventures in Toledo. This spacious property offers a versatile layout, expansive storefront windows, and ample parking, providing convenience for both tenants and customers. Its strategic location ensures high visibility and accessibility, creating an optimal environment for attracting steady foot traffic and enhancing brand exposure. Modern amenities, customizable interiors, and a professional exterior contribute to a dynamic and welcoming environment suitable for various retail or commercial uses. The adaptable layout allows for efficient floor planning, making it an excellent fit for businesses seeking a prominent and adaptable space to engage their target audience.

PROPERTY HIGHLIGHTS

- Versatile layout accommodating various retail or commercial uses
- Ample on-site parking for customers and employees
- Customizable interiors to suit specific business requirements



Presented By:

Legacy Commercial Property

847-904-9200

info@legacypro.com

4250 W. ALEXIS RD.

4250 W. ALEXIS RD., TOLEDO, OH 43623

ADDITIONAL PHOTOS



Presented By:

Legacy Commercial Property

847-904-9200

info@legacypro.com



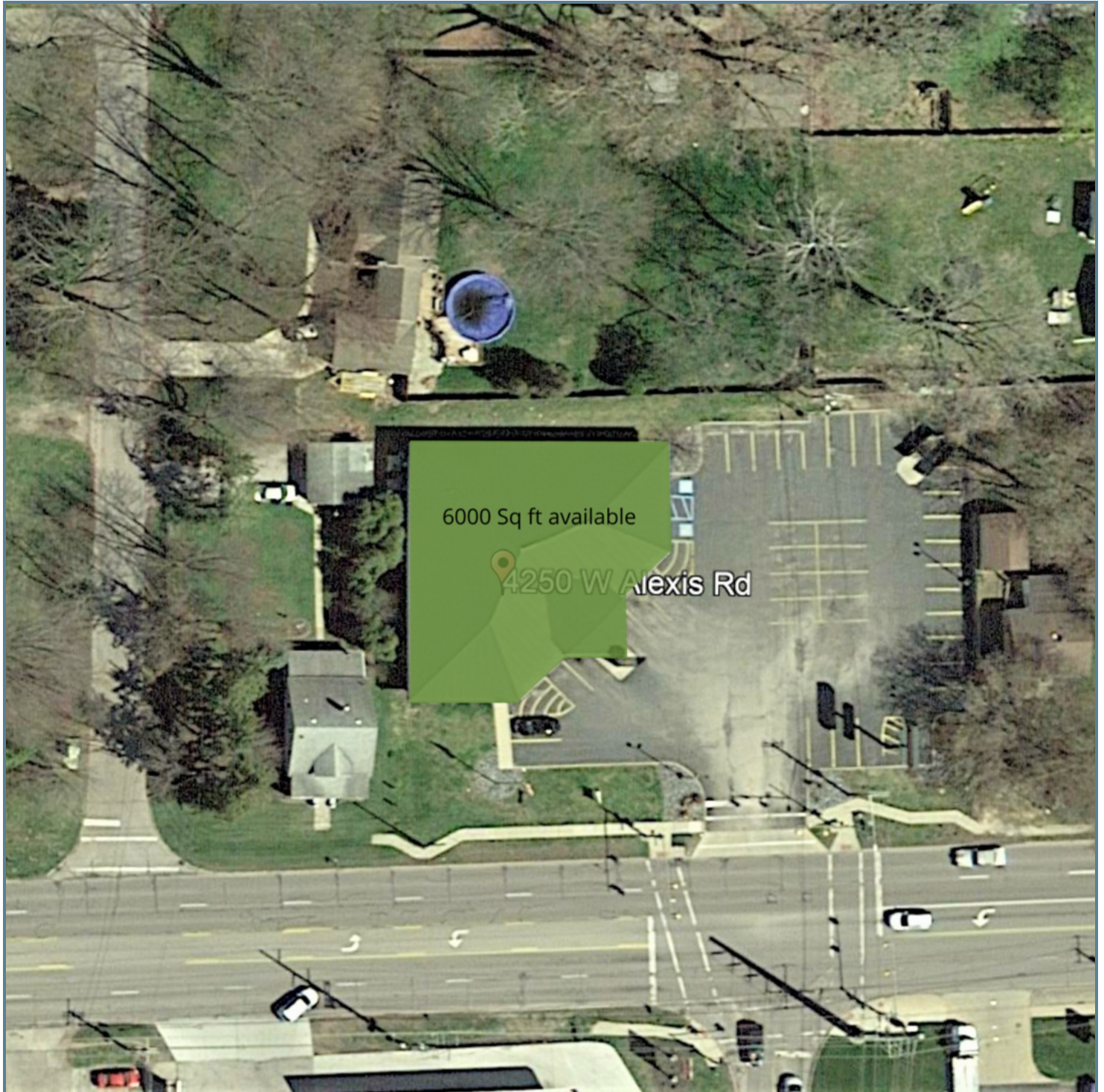
LEGACY
COMMERCIAL PROPERTY

209 Powell Place
Brentwood, TN 37027
<http://legacypro.com>

4250 W. ALEXIS RD.

4250 W. ALEXIS RD., TOLEDO, OH 43623

SITE PLANS



Presented By:

Legacy Commercial Property

847-904-9200

info@legacypro.com



LEGACY
COMMERCIAL PROPERTY

209 Powell Place
Brentwood, TN 37027
<http://legacypro.com>

4250 W. ALEXIS RD.

4250 W. ALEXIS RD., TOLEDO, OH 43623

RETAILER MAP



Presented By:

Legacy Commercial Property

847-904-9200

info@legacypro.com



LEGACY

COMMERCIAL PROPERTY

209 Powell Place
Brentwood, TN 37027
<http://legacypro.com>