



446-448 Main Street, East Orange, NJ 07018

FOR MORE INFORMATION, PLEASE CONTACT EXCLUSIVE BROKER:

Ming Simon

C: 646.331.5620

D: 862.233.9136

Ming@ZoltekCRE.com

ZOLTEK
COMMERCIAL REAL ESTATE SERVICES

AVAILABLE

FOR LEASE

- Street Retail Spaces Available for Lease: 1,187 SF & 1,139 SF
- Units can be Combined
- Located at Signalized Intersection
- High Commuter Traffic Exposure
- 44' Frontage on Main Street (MLK Blvd)
- Traffic Count Main Street: 18,705 VPD
- Zoning Commercial (ACD) Central Arts and Cultural District: Click [Here For More Information](#)
- Neighboring National Tenants: Domino's, Wendy's, Playa Bowls, 7-ELEVEN, Walgreen's, ShopRite, Family Dollar, Citizens Bank, PNC Bank, Advanced Auto Parts, and Many More...

FOR MORE INFORMATION, PLEASE CONTACT EXCLUSIVE BROKER:

Ming Simon

C: 646.331.5620

D: 862.233.9136

Ming@ZoltekCRE.com

ZOLTEK

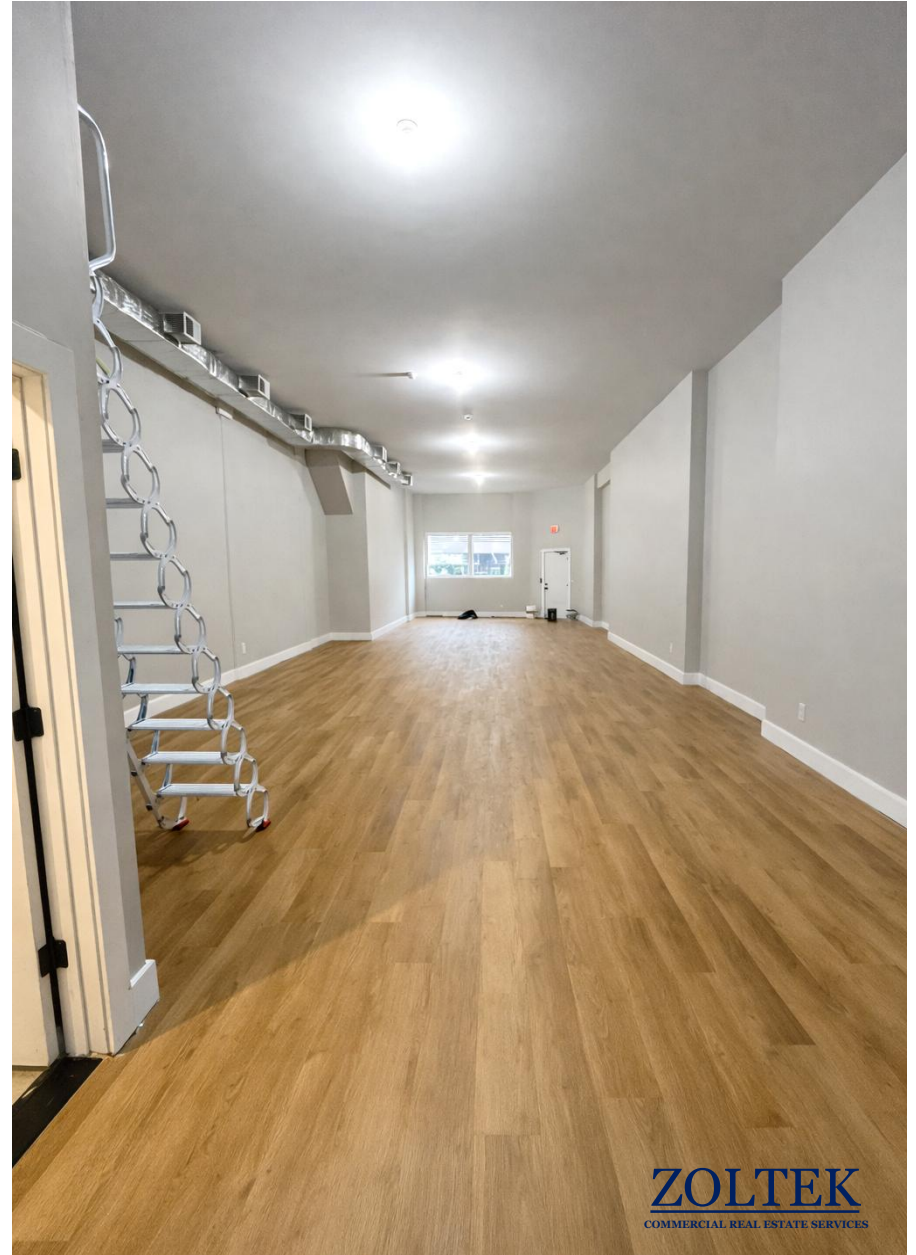
COMMERCIAL REAL ESTATE SERVICES

ZOLTEK COMMERCIAL REAL ESTATE SERVICES- Licensed Real Estate Broker - 15 Furler Street, Totowa, NJ 07512 * T: 973.798.6130

WWW.ZOLTEKCRE.COM ALTHOUGH ALL THE INFORMATION REGARDING PROPERTY FOR SALE, RENTAL OR FINANCING IS FROM SOURCES DEEMED RELIABLE SUCH INFORMATION HAS NOT BEEN VERIFIED, AND NO EXPRESS REPRESENTATION IS MADE NOR IS ANY TO BE IMPLIED AS TO THE ACCURACY THEREOF, AND IT IS SUBMITTED SUBJECT TO ERRORS, OMISSIONS, CHANGE OF PRICE, RENTAL OR OTHER CONDITIONS, PRIOR SALE, LEASE OR FINANCING, OR WITHDRAWAL WITHOUT NOTICE

1,187 SF – RETAIL SPACE A

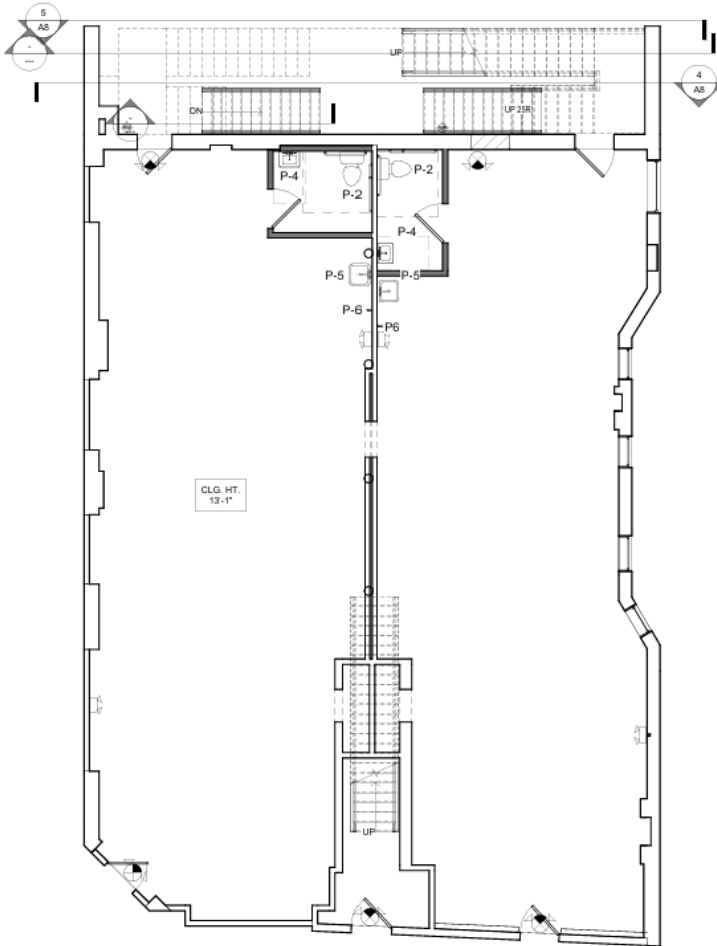
448 Main St. East Orange, NJ



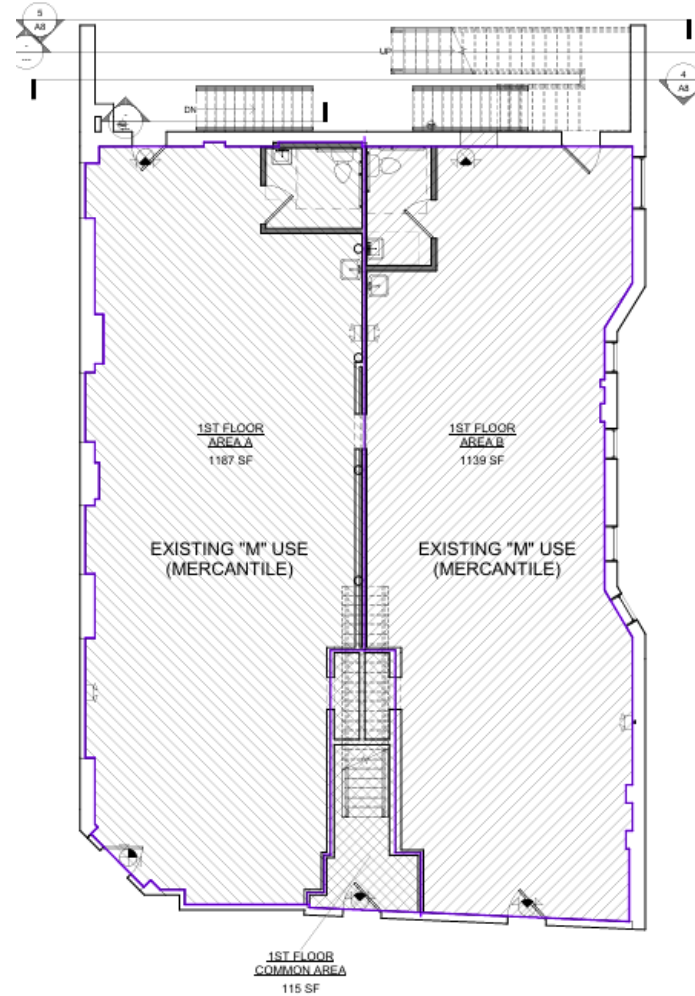
1,139 SF – RETAIL SPACE B

446 Main St. East Orange, NJ





2 1ST FLOOR PLUMBING PLAN
3/16" = 1'-0"



1 1ST FLOOR OCCUPANCY
3/16" = 1'-0"

8	12292 LAYOUT
2	REVISIONS

GUT & VANN
 ARCHITECTS & ENGINEERS
 177 AVENUE OF THE STATES
 SUITE 300
 LAWRENCEVILLE, GA 30046
 770-962-0171 | info@gutvann.com

NAFTOLI GUT, R.A.
 NJ LICENSE # 2100117300
 NY LICENSE # 13460

PROJECT:
 INTERIOR ALTERATIONS TO
 EXISTING 3-STY RESIDENCE

448 MAIN ST LLC
 448 MAIN STREET
 EAST ORANGE, NJ 07018
 BLOCK: 370 LOT: 1

PLUMBING PLANS

DATE: 8/11/2021
 SCALE: As indicated
 JOB NUMBER: 21-185
 DRAWN: RBD CHECKED: NG

P1

SITE PLAN

Glenwood Apartments

East Orange Community Charter

Com-Tec Institute

Washington Towers

Prospect Ave Apartments

Fountain of the Living Word Church

Edward T. Bowser Elementary School

JAMAICERY



112 Lincoln Place Apartments



East Orange Police



15 Summit Street Apartments



MGM Medical Center



MAIN STREET

Holy Spirit & Roaman Catholic Church

Cicely L. Tyson Community Arts Elementary School



Tyson Elementary School

MAIN ST. TRAFFIC COUNT: 18,705 VPD

SITE

Hue Soul Apartments



East Orange Public Library



ZOLTEK

COMMERCIAL REAL ESTATE SERVICES INC.

Grace Apostolic Church

East Orange Municipal Court





DEMOGRAPHICS	<i>1 Mile</i>	<i>3 Miles</i>	<i>5 Miles</i>
Population	66,099	434,116	835,792
Daytime Population	17,462	145,871	301,160
Households	26,731	160,464	308,715
Median Age	37.9	37	38.2
Average HH Income	\$77,146	\$89,345	\$105,805

FOR MORE INFORMATION, PLEASE CONTACT EXCLUSIVE BROKER:

Ming Simon

C: 646.331.5620

D: 862.233.9136

Ming@ZoltekCRE.com

ZOLTEK

COMMERCIAL REAL ESTATE SERVICES