



# Overland Industrial Park

## 1465 & 1473 S 700 W

Salt Lake City, UT 84104



For Lease  
Price: \$1.00 PSF  
NNN: \$0.17 PSF

- 8,160 - 20,160 Sq. Ft. Avail.
- Unit 1465:  
12,000 Sq. Ft.
  - Office: 1,750 Sq. Ft.
  - Warehouse: 10,250 Sq. Ft.
  - Two (2) 10'x10' Dock High Doors
  - Ramp Access
- Unit 1473:  
8,160 Sq. Ft.
  - Office: 2,000 Sq. Ft.
  - Warehouse: 6,160 Sq. Ft.
  - Two (2) 10'x10' Dock High Doors
  - Ramp Access
- 18' Clearance
- 240 volt/200 amp/3 phase
- Ample Parking
- Immediate Access to I-15
- 5 minutes from downtown



2040 E. Murray Holladay Road Suite 106  
Holladay, UT  
801.876.6070  
CRESUTAH.COM

Alex Kresser  
cell: 801.573.9914  
alex@cresutah.com

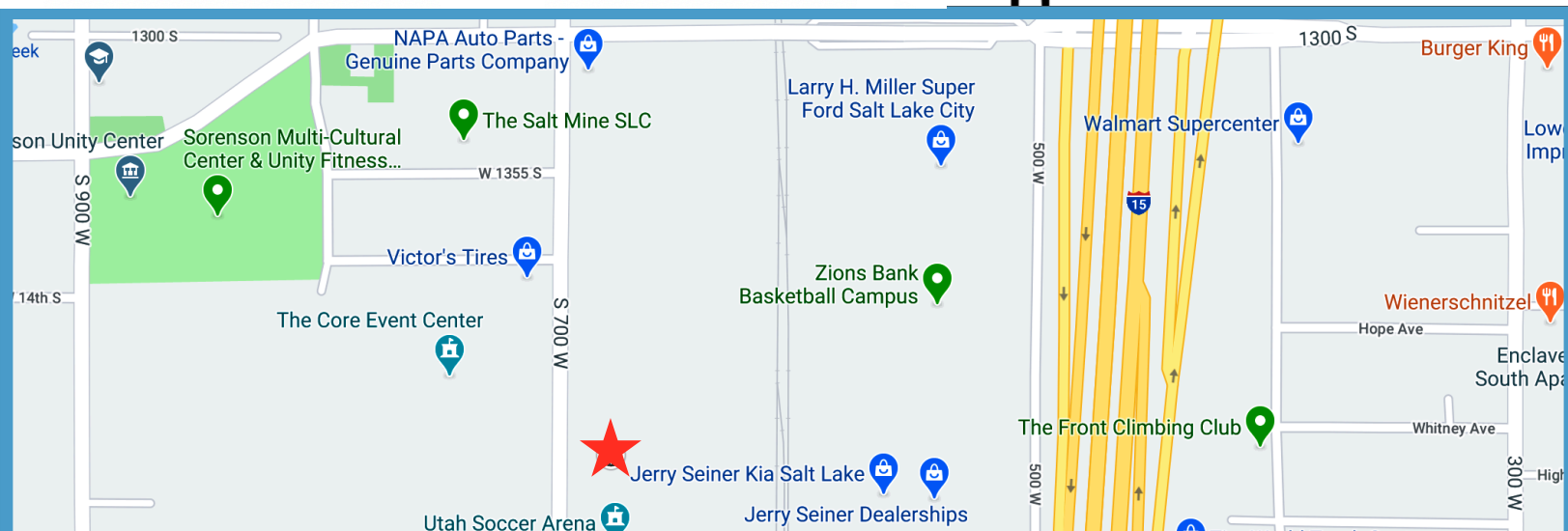
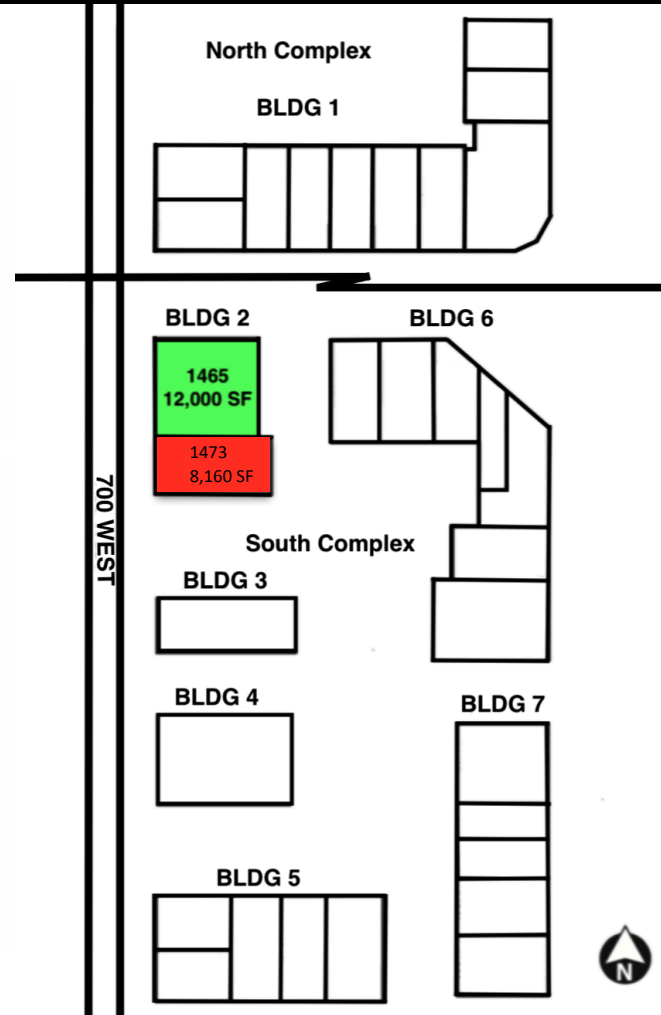
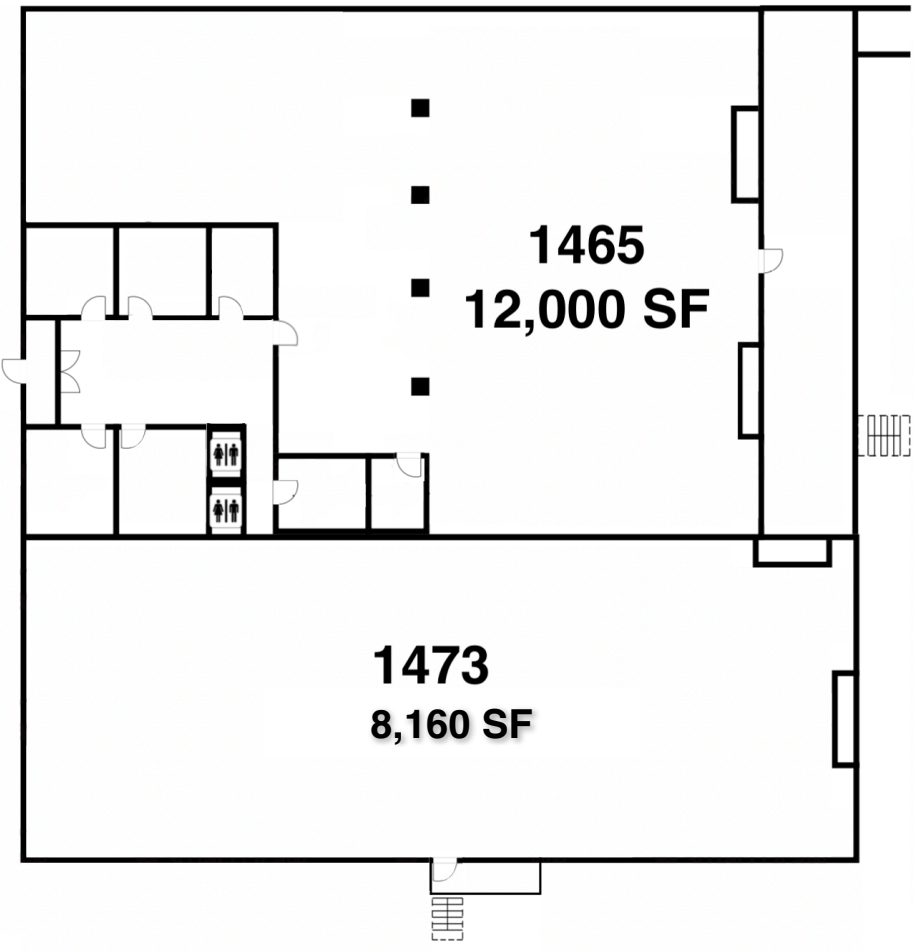
Justin Welch  
cell 801.718.8842  
justin@cresutah.com



# Overland Industrial Park

## 1465 & 1473 S 700 W

Salt Lake City, UT 84104



2040 E. Murray Holladay Road Suite 106  
Holladay, UT  
801.876.6070  
CRESUTAH.COM

Alex Kresser  
cell: 801.573.9914  
alex@cresutah.com

Justin Welch  
cell 801.718.8842  
justin@cresutah.com