

Prime Retail Space in West Village

119 Christopher Street(off Bleeker St)

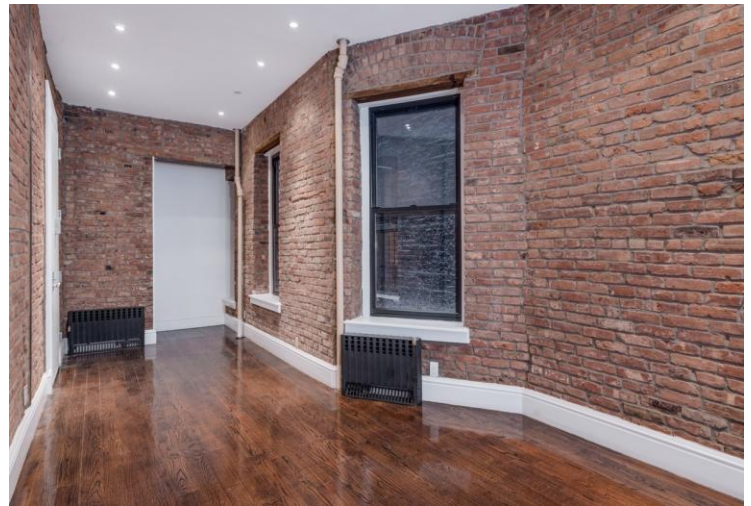
New York, NY 10014



- Ultra Prime Turn Key Retail in West village.
- \$7,995/month for Ground floor 400 SF+ 200 SF basement
- Ventilation can be easily built
- Flexible Lease terms. 1-7 years
- Open to all uses. Cooking allowed but No Gas

Neighbors with:

- Sushi Counter
- L'industrie Pizzeria West Village
- Numi Global Curiosities
- Lucille Lortel Theater
- McNulty's Tea & Coffee Co
- Fiaschetta Pistoia
- many more eateries and stores



Transportation: MTA Subway lines ;
1, A,C,E,B,D,F,M, NJ Path and Bus M8, M20

Elizabeth Han
9179608965
elizabeth@mbreny.com


MANHATTAN BOUTIQUE
REAL ESTATE