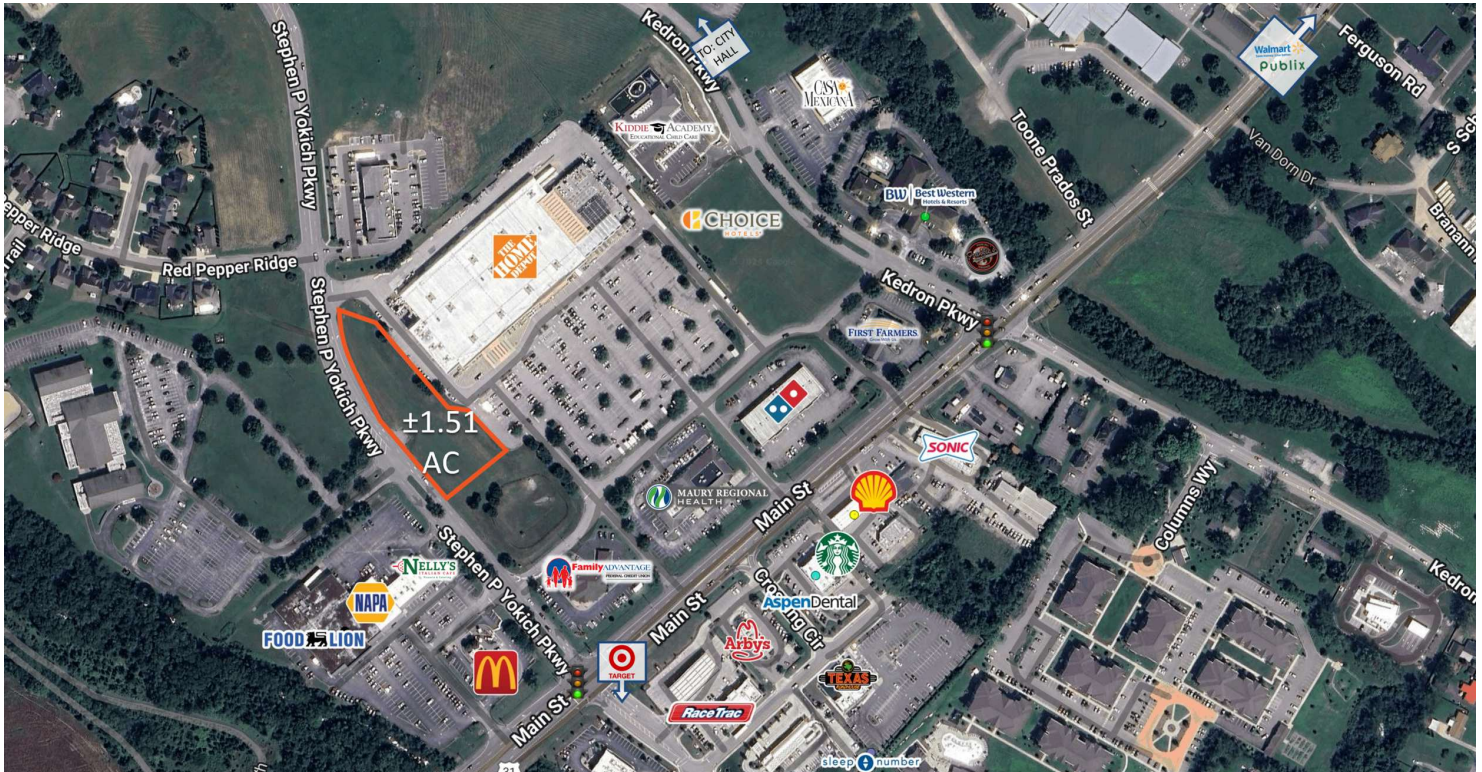




# ±1.51 AC SPRING HILL, TN

5411 Columbia Pike, Spring Hill, TN 37174

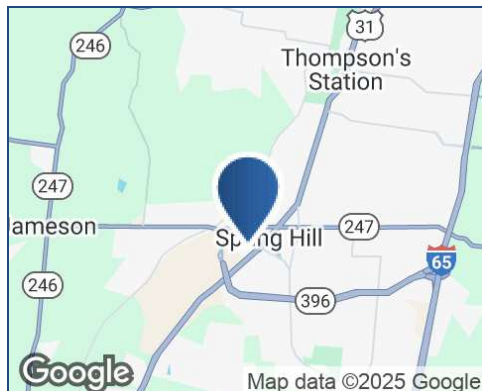
## Property Summary



### DAILY TRAFFIC CONDITIONS

TRAFFIC COUNT	DAILY TRAFFIC
COUNT	24,653
STREET	Main St.

\* Figures shown represent estimates



### DEMOGRAPHICS - 2025

DEMOGRAPHICS	3 MILE	5 MILE	10 MILE
Estimated Population	33,189	70,087	113,080
Average HH Income	\$122,319	\$136,943	\$139,905
Estimated Households	12,055	25,596	41,820

### PROPERTY HIGHLIGHTS

- Anchored by The Home Depot
- General Motors plant is located one mile south
- Nearby retailers and restaurants include The Home Depot, Food Lion, Kohl's, Target, Ross Dress For Less, Ulta Beauty, Kirkland's, PetSmart, Rack Room Shoes, Hibbett Sports, Starbucks, Olive Garden, LongHorn Steakhouse, Logan's Roadhouse, Panera Bread, Cracker Barrel, Buffalo Wild Wings, and more



KEITH VALENTINE

678.718.1882

KValentine@retail-pa.com

SHELDON GRIFFIN

615.627.3966

sgriffin@bsmproperties.com

Retail Property Advisors // 678.718.1880 // 2100 RiverEdge Pkwy. // Suite 1050, Atlanta, GA 30328 // Retail-PA.com

ATLANTA // TAMPA // PASADENA, CA // AUBURN // SARASOTA // BALTIMORE

No warranty or representation, expressed or implied, is made as to the accuracy of the information contained herein, and same is submitted subject to errors, omissions, change of price, rental or other conditions, withdrawal without notice, any special list conditions imposed by our Principals.

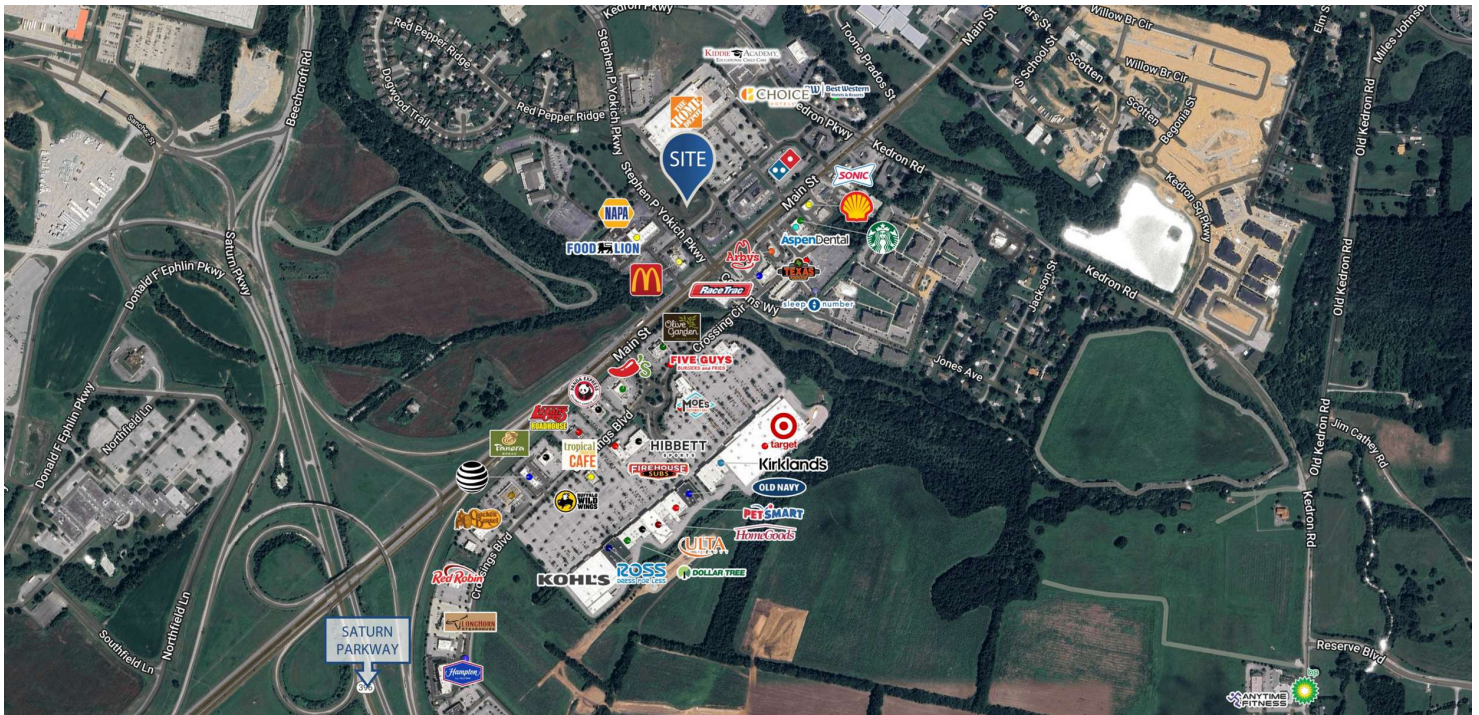




# ±1.51 AC SPRING HILL, TN

5411 Columbia Pike, Spring Hill, TN 37174

## Location Maps



KEITH VALENTINE

678.718.1882

KValentine@retail-pa.com

SHELDON GRIFFIN

615.627.3966

sgriffin@bsmproperties.com

Retail Property Advisors // 678.718.1880 // 2100 RiverEdge Pkwy. // Suite 1050, Atlanta, GA 30328 // Retail-PA.com

ATLANTA // TAMPA // PASADENA, CA // AUBURN // SARASOTA // BALTIMORE

No warranty or representation, expressed or implied, is made as to the accuracy of the information contained herein, and same is submitted subject to errors, omissions, change of price, rental or other conditions, withdrawal without notice, any special list conditions imposed by our Principals.