

INDUSTRIAL SPACE FOR SALE

910 S 6TH AVE

Purcell, OK 73080

NICK GRAY
405.615.9904
nick@creekcre.com

EXECUTIVE SUMMARY



OFFERING SUMMARY

Sale Price:	\$589,999
Building Size:	25,769 SF
Lot Size:	407,321 SF
Price / SF:	\$22.90
Year Built:	1980
Zoning:	Industrial
Market:	Purcell

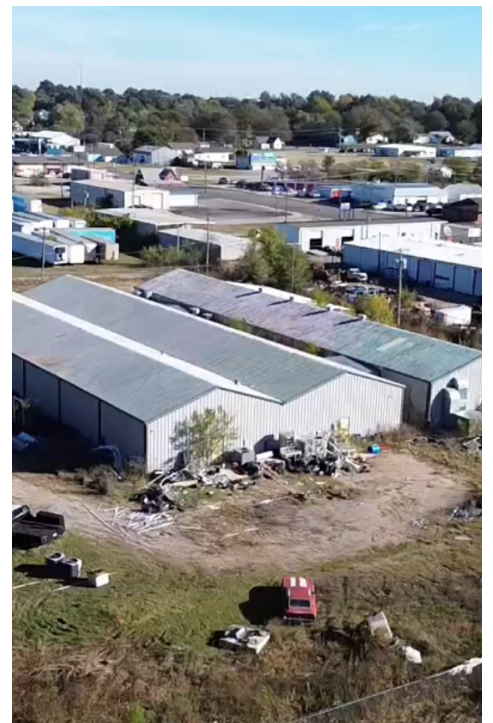
PROPERTY OVERVIEW

Versatile industrial property featuring approximately 25,000 SF of mostly temperature-controlled warehouse space. Previously used as an agricultural grow facility, this site includes upgraded power and a spacious yard ideal for storage or expansion.

NICK GRAY
405.615.9904
nick@creekcre.com

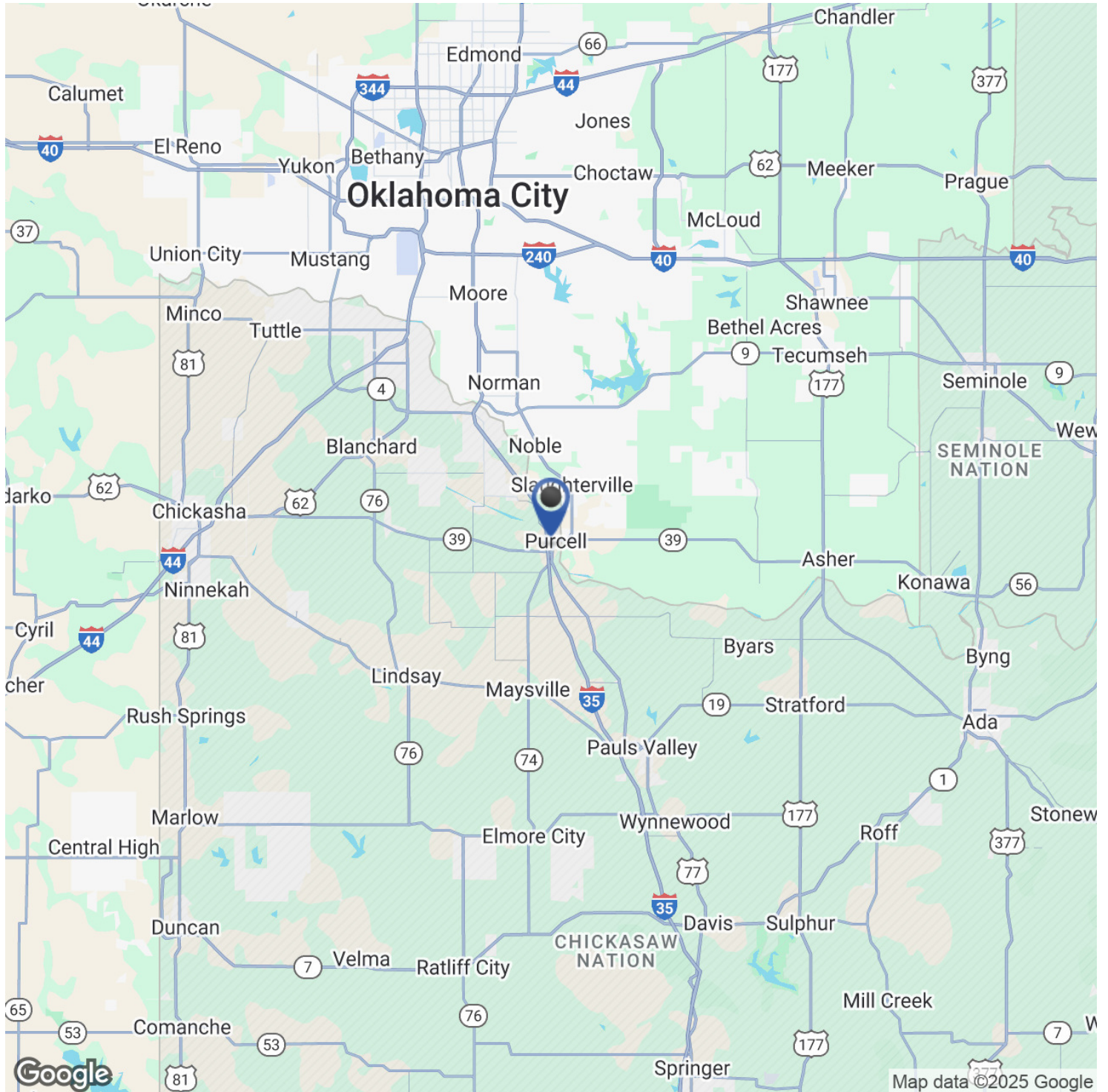
910 S 6TH AVE
910 S 6TH AVE | PURCELL, OK 73080

ADDITIONAL PHOTOS



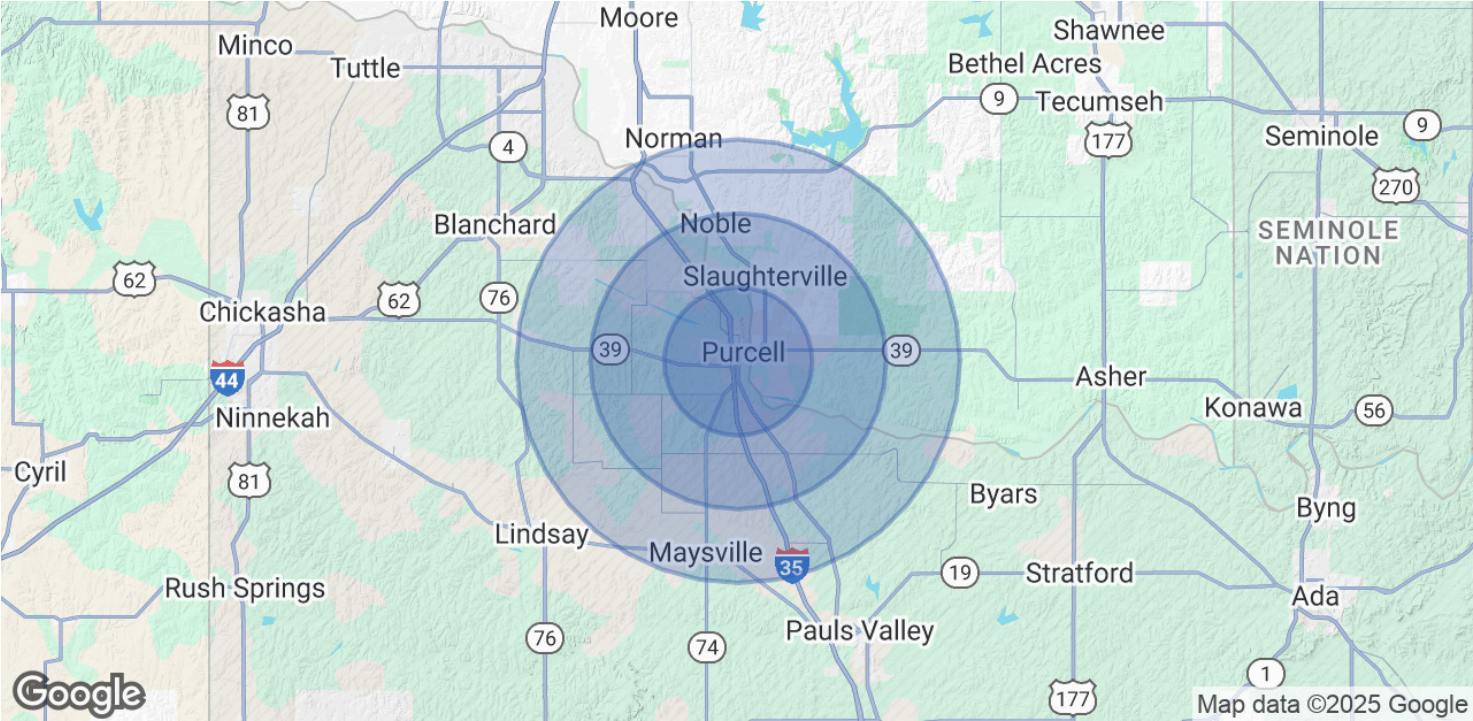
NICK GRAY
405.615.9904
nick@creekcre.com

LOCATION MAP



NICK GRAY
405.615.9904
nick@creekcre.com

DEMOGRAPHICS MAP & REPORT



POPULATION	5 MILES	10 MILES	15 MILES
Total Population	11,880	24,726	117,345
Average Age	40	41	37
Average Age (Male)	39	40	36
Average Age (Female)	41	41	37

HOUSEHOLDS & INCOME	5 MILES	10 MILES	15 MILES
Total Households	4,382	8,682	43,785
# of Persons per HH	2.7	2.8	2.7
Average HH Income	\$90,748	\$98,144	\$81,460
Average House Value	\$228,252	\$260,966	\$290,893

Demographics data derived from AlphaMap

NICK GRAY
405.615.9904
nick@creekcre.com