



674 HARRISON

±10,000 SQUARE FEET

BUILDING FEATURES

SIZE: ±10,000 SQ FT

HEAVY POWER: 600 AMP, 480V, 3 PHASE

CEILING HEIGHT: ±30' CEILING HEIGHT

ROLL-UP DOOR: ±14' ROLL UP DOOR CLEAR HEIGHT

LOADING: WIDE ARC FOR SEMI-TRUCK LOADING

MECHANICAL: HVAC

AMENITIES: FULL KITCHEN, 2 SHOWERS

SIGNAGE: HIGH VISIBILITY LOCATION



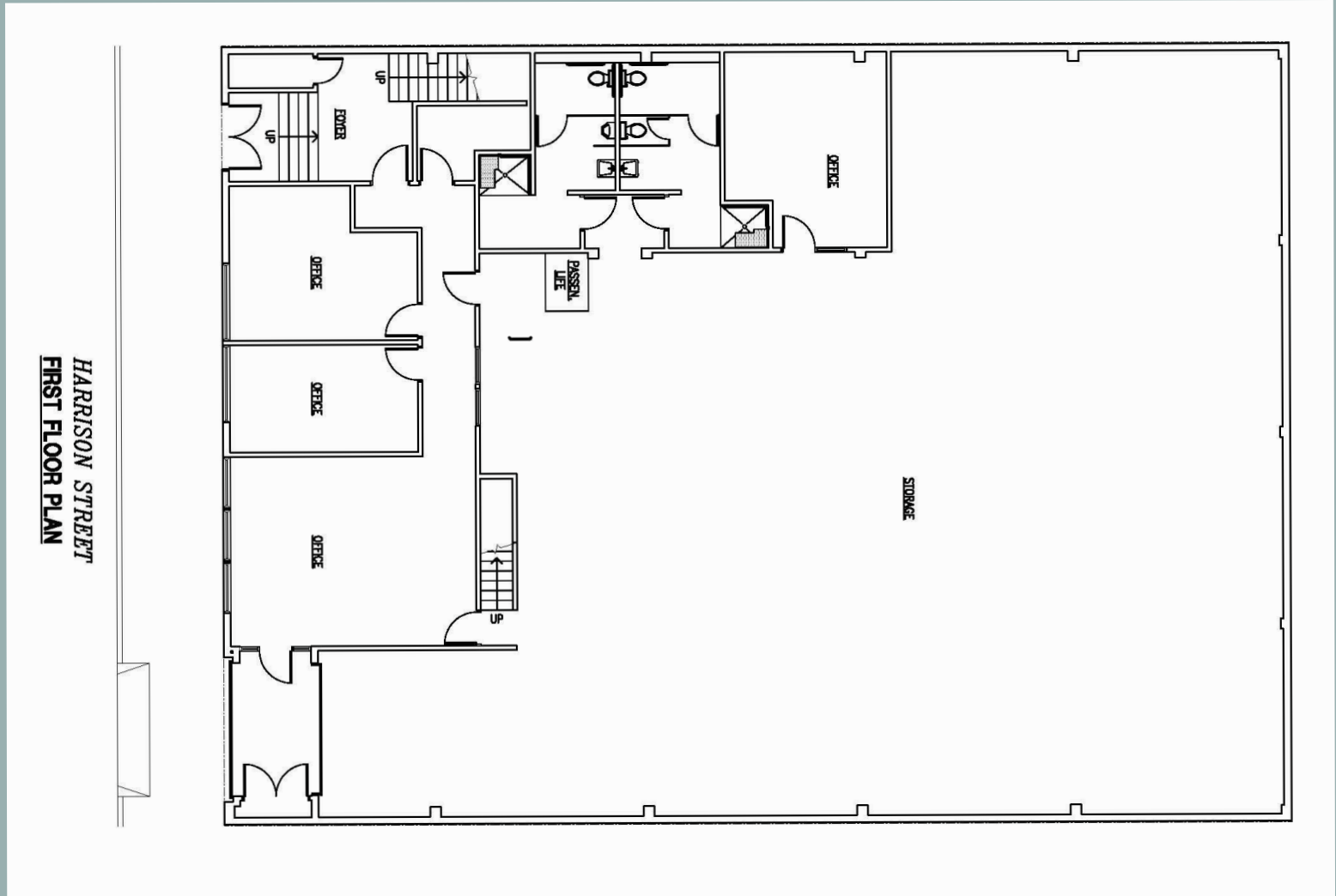
GROUND LEVEL

2 GROUND-LEVEL ENTRANCES ON HARRISON ST

4 PRIVATE OFFICES/ CONFERENCE ROOMS

2 RESTROOMS WITH SHOWERS

2 ACCESS POINTS TO MEZZANINE

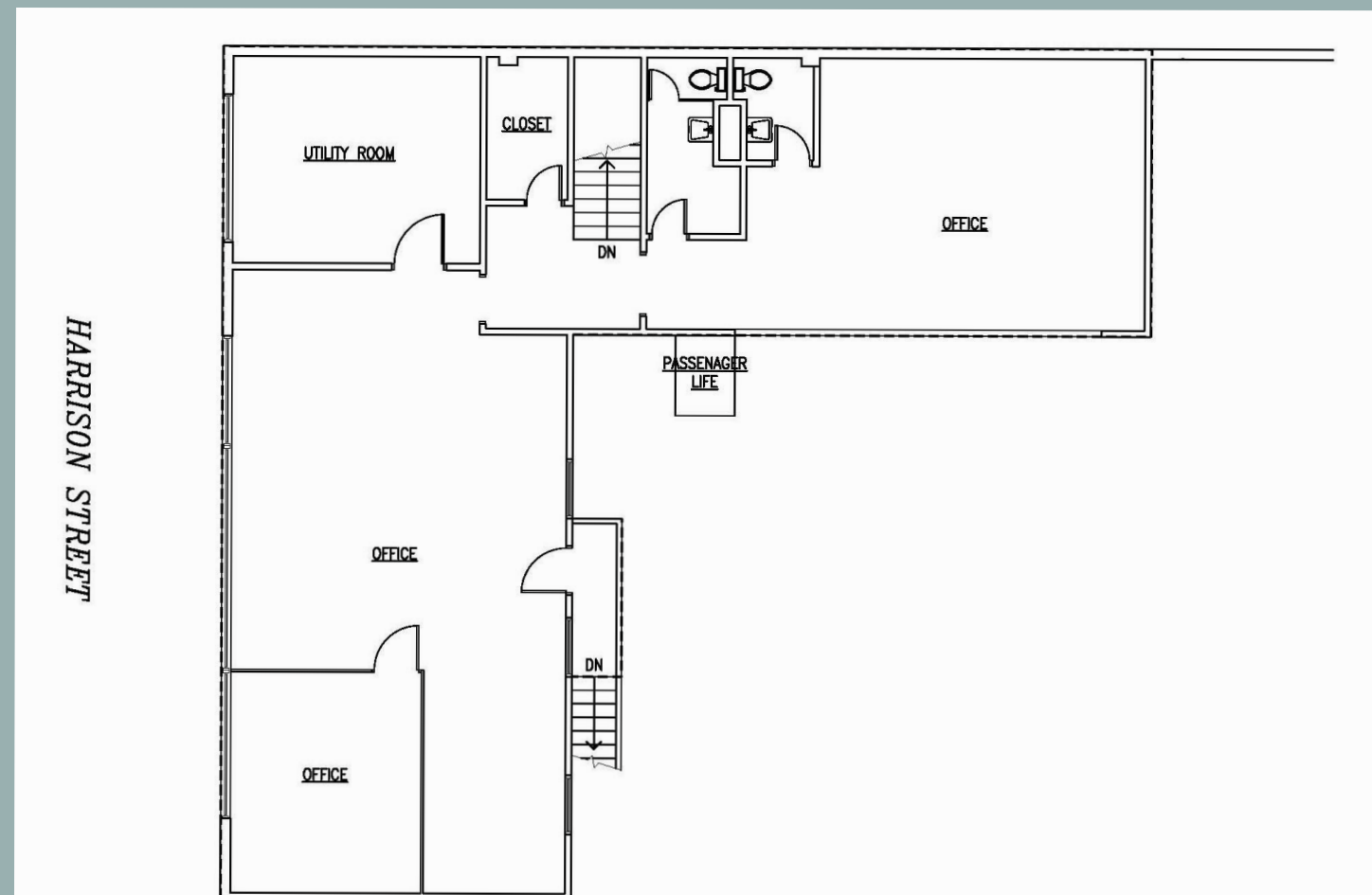


MEZZANINE

WINDOWS OVERLOOKING WORKSHOP

ONE PRIVATE OFFICE

RESTROOM





LOCAL AMENITIES

FOOD

- 01. MOVIDA
- 02. 21ST AMENDMENT
- 03. BIRD BOX
- 04. SAJJ
- 05. MERKADO
- 06. SAISON
- 07. CAFE OKAWARI
- 08. ROOH
- 09. MESTIZA
- 10. BOOCHMANIA
- 11. CAFE DU SOL

COFFEE

- 01. BLUE BOTTLE
- 02. CAFFE CENTRO
- 03. GOLDEN GOAT COFFEE
- 04. FLOUR & BRANCH
- 05. PAPER SON COFFEE

ENTERTAINMENT

- 01. ORACLE PARK
- 02. CHASE CENTER
- 03. LUCKY STRIKE
- 04. JAX VINEYARDS
- 05. ROOFTOP 25
- 06. KAIYO ROOFTOP
- 07. YERBA BUENA

HOTELS

- 01. HOTEL VIA
- 02. HYATT PLACE
- 03. THE CLANCY
- 04. THE W
- 05. ST. REGIS

CONTACT US

CHRIS HARNEY

LIC. #01108232

415-999-6007

CHARNEY@HCMCOMMERCIAL.COM

