

FOR SALE OR LEASE

# 72265 MANUFACTURING ROAD

THOUSAND PALMS, CA



## 5,321 SF INDUSTRIAL BUILDING | LAND SIZE - 43,124 SF



**SALE PRICE \$1,490,000 | LEASE PRICE \$1.50/MO NNN**

- Hard to find small industrial building on large .99 ac secured yard
- Concrete tilt-up construction
- Three 14-foot roll up doors
- 240v, 3-Phase, 400 Amp service
- Additional, detached vehicle service area
- Easy access to Interstate 10
- Retail and restaurant services nearby
- Available with 30-day notice to existing tenant

**Fabio Ceresa**  
fceresa@leedesert.com  
760.346.2522  
LIC #01304059

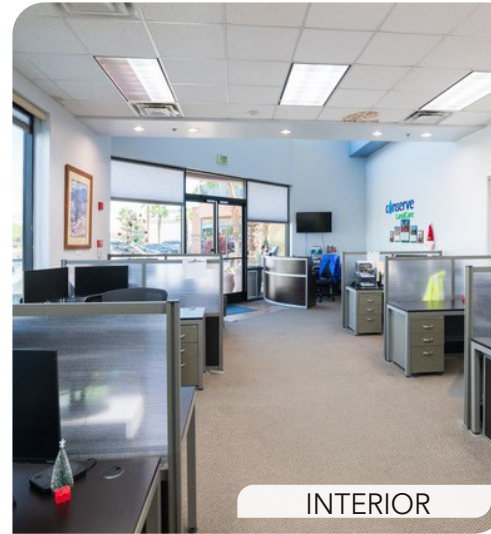
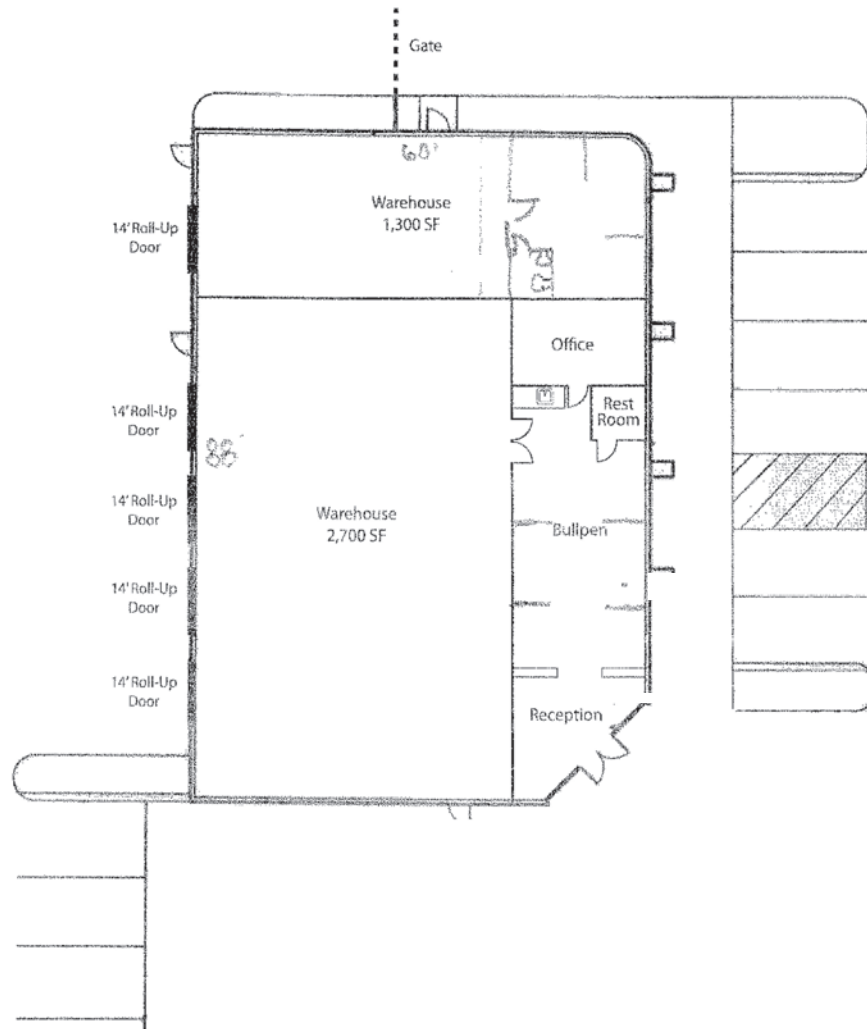
All information furnished regarding property for sale, rental or financing is from sources deemed reliable, but no warranty or representation is made to the accuracy thereof and same is submitted to errors, omissions, change of price, rental or other conditions prior to sale, lease or financing or withdrawal without notice. No liability of any kind is to be imposed on the broker herein.

FOR SALE OR LEASE

# 72265 MANUFACTURING ROAD

THOUSAND PALMS, CA

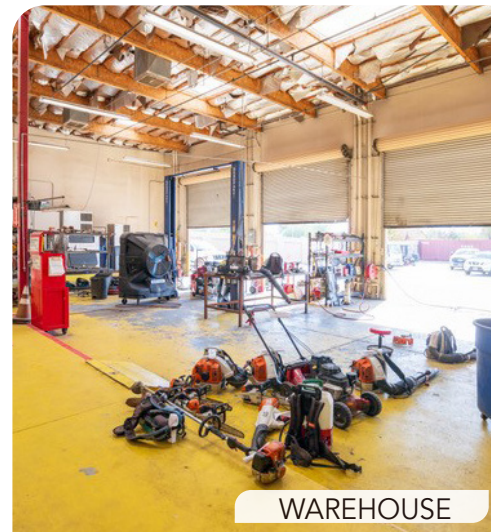
## FLOOR PLAN



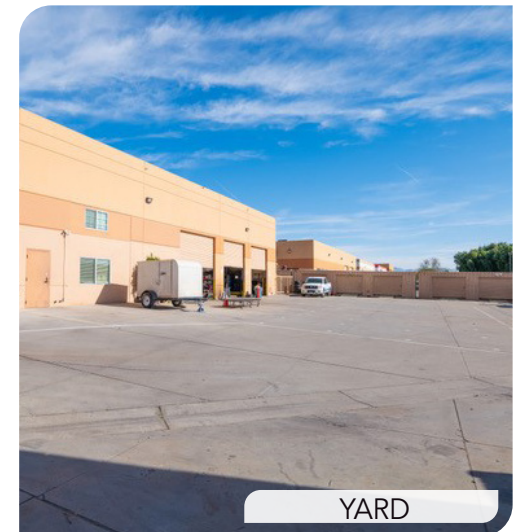
INTERIOR



INTERIOR



WAREHOUSE



YARD

All information furnished regarding property for sale, rental or financing is from sources deemed reliable, but no warranty or representation is made to the accuracy thereof and same is submitted to errors, omissions, change of price, rental or other conditions prior to sale, lease or financing or withdrawal without notice. No liability of any kind is to be imposed on the broker herein.

FOR SALE OR LEASE

# 72265 MANUFACTURING ROAD

THOUSAND PALMS, CA



**Fabio Ceresa**

fceresa@leedesert.com

760.346.2522

LIC #01304059

All information furnished regarding property for sale, rental or financing is from sources deemed reliable, but no warranty or representation is made to the accuracy thereof and same is submitted to errors, omissions, change of price, rental or other conditions prior to sale, lease or financing or withdrawal without notice. No liability of any kind is to be imposed on the broker herein.