

# FOR LEASE



**R.W. HOLMES**  
COMMERCIAL REAL ESTATE

**321** Commonwealth Rd  
Wayland | MA

**Craig Johnston** | 508-651-9022 | [cjohnston@rwholmes.com](mailto:cjohnston@rwholmes.com)

**Garry Holmes** | 508-651-9020 | [gholmes@rwholmes.com](mailto:gholmes@rwholmes.com)

# WAYLAND WOODS

321 Commonwealth Rd | Wayland, MA



## SPECIFICATIONS

- 1,582 + 5,148 SF available
- Onsite management and daycare
- Walking distance to many amenities
- Minutes to Mass Pike & Route 128/95
- Term Through July 31, 2024
- 1st Class Office Building
- Management Onsite
- Newly Renovated Lobby
- 3.2/1000 Parking
- RENTAL RATE: \$24.75/SF + t.e.

### Amenities:

Walking distance to numerous restaurants, banks, grocery store, Starbucks, Dunkin' Donuts and Einstein Bagel.

### Notes:

Two miles from the second largest shopping district in Massachusetts including the Natick Mall and Shoppers World. The property is located approximately 5 miles from Route 128 and 2 miles to the Mass Pike exchange.



For more information please contact:

**Craig Johnston** 508-651-9022, [cjohnston@rwholmes.com](mailto:cjohnston@rwholmes.com)

**Garry Holmes** 508-651-9020, [gholmes@rwholmes.com](mailto:gholmes@rwholmes.com)

**R.W. HOLMES**  
COMMERCIAL REAL ESTATE

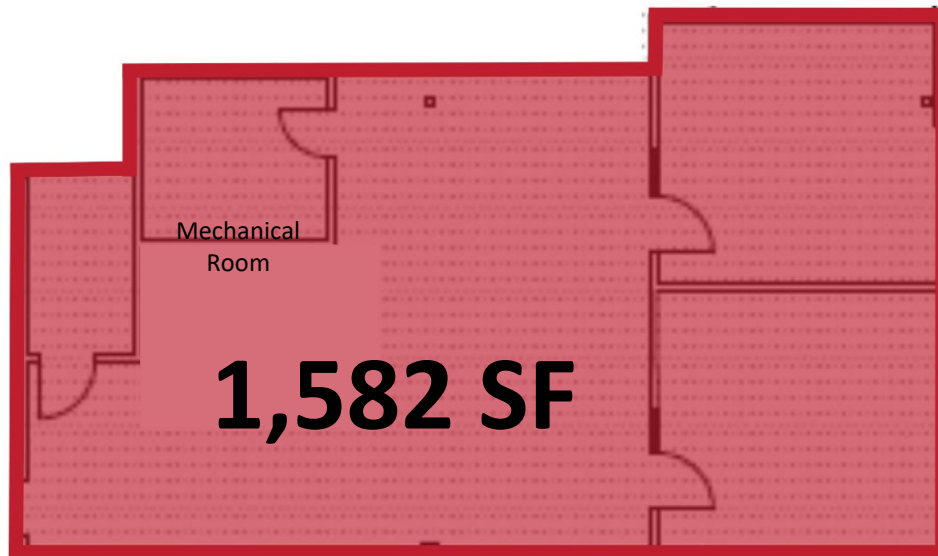
321 Commonwealth Road, Suite 202, Wayland, MA 01778 | Phone (508) 655-5626 [www.rwholmes.com](http://www.rwholmes.com)

All information furnished regarding property for sale, rental or financing is from sources deemed reliable. No representation is made as to the accuracy thereof and is submitted subject to errors, omissions, change of price, rental or other conditions, prior sale, lease or financing, or withdrawal without notice.

# WAYLAND WOODS

321 Commonwealth Rd | Wayland, MA

## 2nd Floor



## 3rd Floor



For more information please contact:

**Craig Johnston** 508-651-9022 [cjohnston@rwholmes.com](mailto:cjohnston@rwholmes.com)

**Garry Holmes** 508-651-9020 [gholmes@rwholmes.com](mailto:gholmes@rwholmes.com)

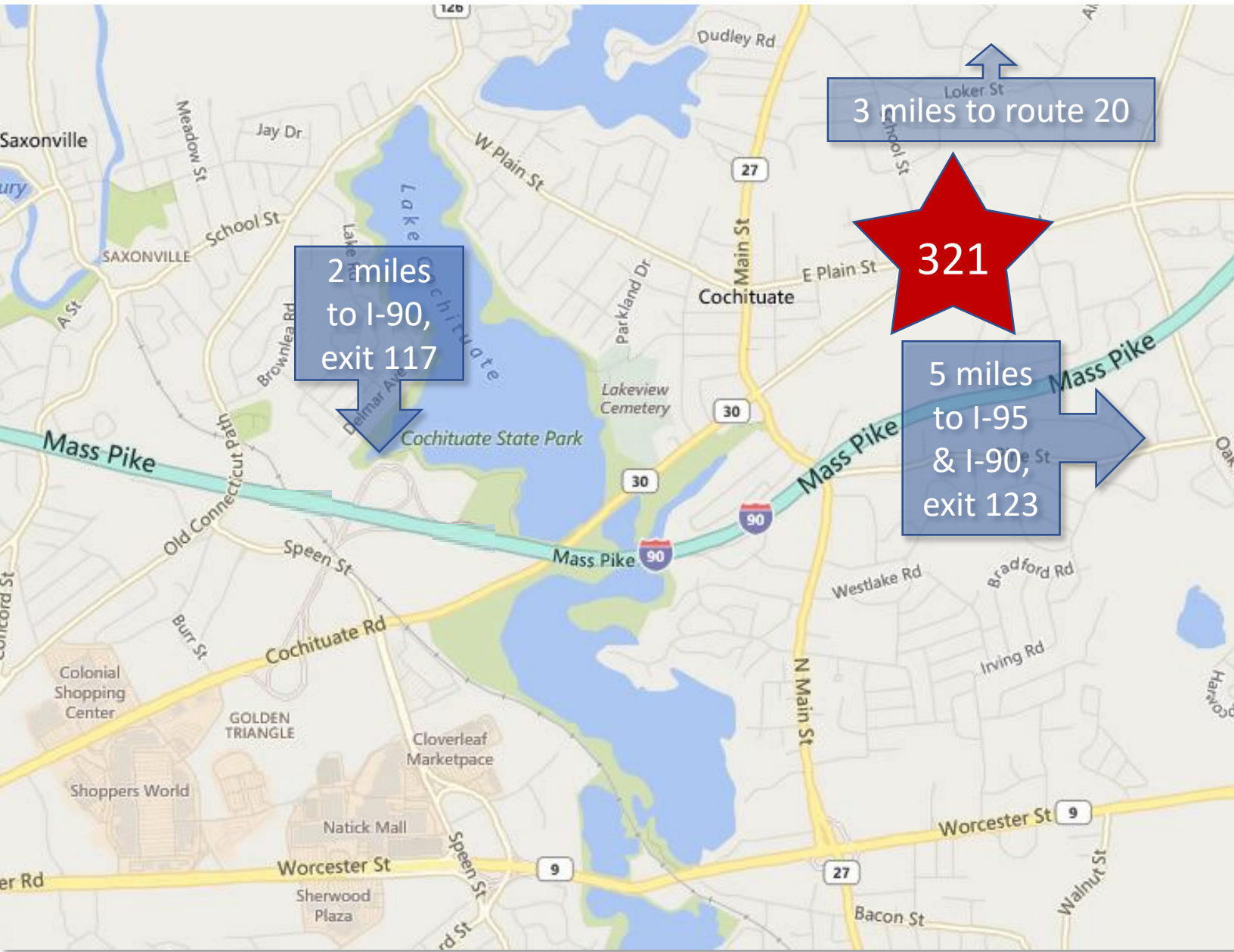
**R.W. HOLMES**  
COMMERCIAL REAL ESTATE

321 Commonwealth Road, Suite 202, Wayland, MA 01778 | Phone (508) 655-5626 [www.rwholmes.com](http://www.rwholmes.com)

All information furnished regarding property for sale, rental or financing is from sources deemed reliable. No representation is made as to the accuracy thereof and is submitted subject to errors, omissions, change of price, rental or other conditions, prior sale, lease or financing, or withdrawal without notice.

# WAYLAND WOODS

321 Commonwealth Rd | Wayland, MA



For more information please contact:

**Craig Johnston** 508-651-9022, [cjohnston@rwholmes.com](mailto:cjohnston@rwholmes.com)

**Garry Holmes** 508-651-9020, [gholmes@rwholmes.com](mailto:gholmes@rwholmes.com)

**R.W. HOLMES**  
COMMERCIAL REAL ESTATE

321 Commonwealth Road, Suite 202, Wayland, MA 01778 | Phone (508) 655-5626 [www.rwholmes.com](http://www.rwholmes.com)

All information furnished regarding property for sale, rental or financing is from sources deemed reliable. No representation is made as to the accuracy thereof and is submitted subject to errors, omissions, change of price, rental or other conditions, prior sale, lease or financing, or withdrawal without notice.