

ANCHOR BOX AVAILABLE FOR LEASE
SOUTHLAND SHOPPING CENTER

TOLEDO, OH

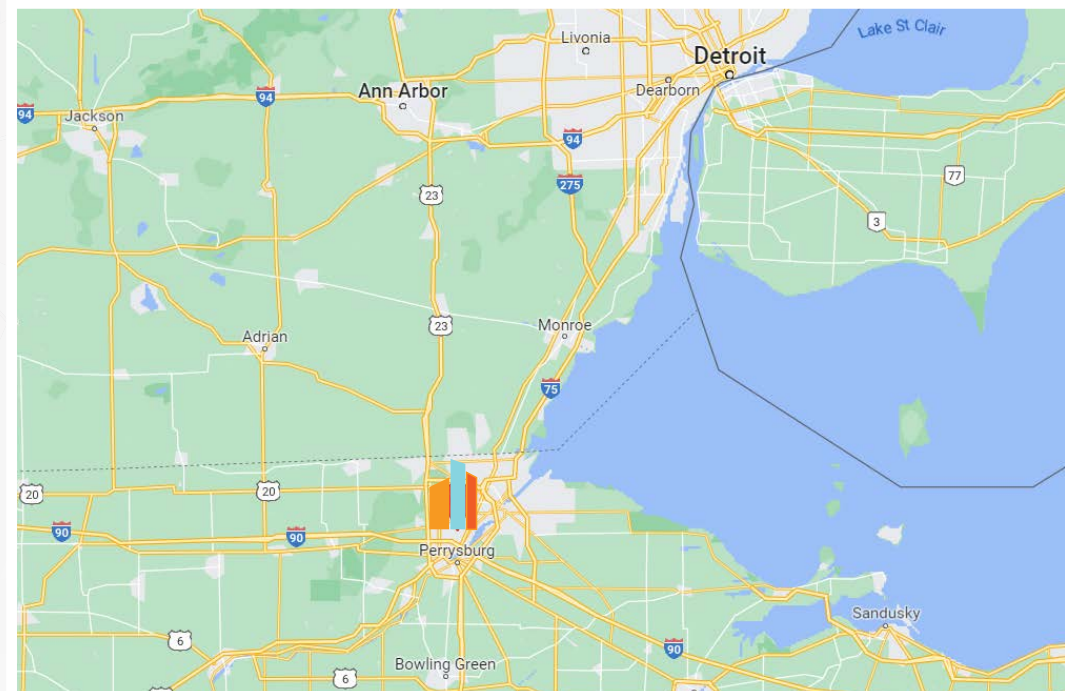
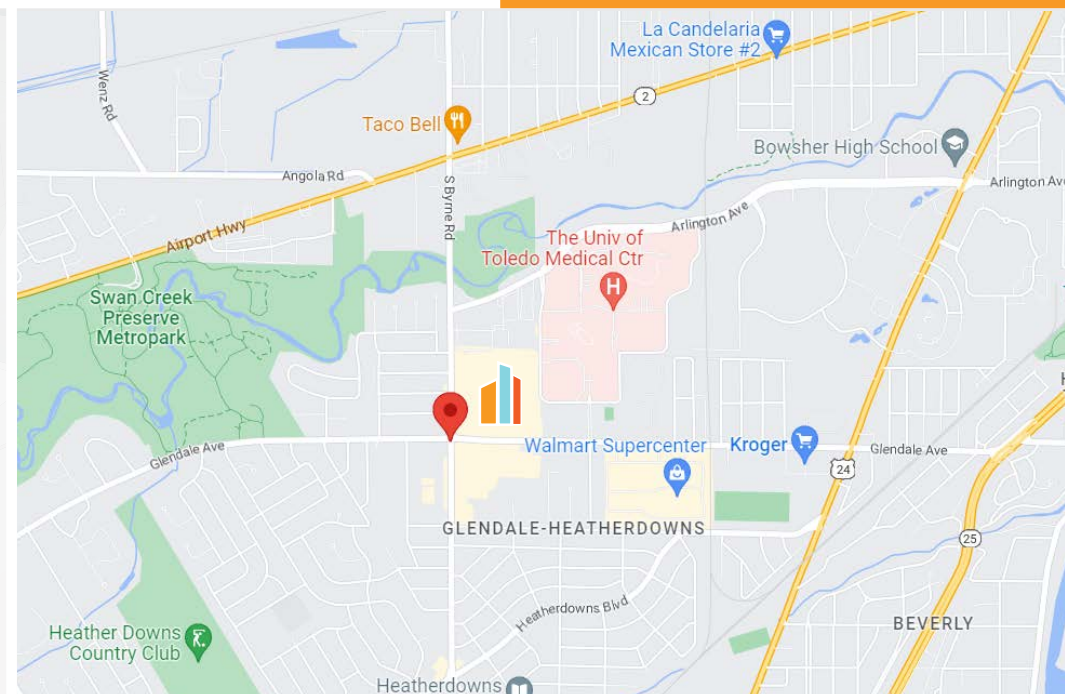


PROPERTY ADDRESS:

1339 S. Byrne Road, 28B, Toledo, OH 43614

- ANCHOR BOX AVAILABLE
- 38,345 SF available with dry basement (not included in the square footage, but included in the lease); accessible through exterior door
- Versatile space is ideal for a variety of uses including, grocery, department stores, soft goods, food services, office, assembly, and entertainment
- 8' Roll up rear door. Owner is willing to install a lift system at Tenant's request
- White box condition.
- 21' to ceiling height with exposed roof deck.
- Over 30,000 vehicles per day (combined) Byrne Road & Glendale Avenue.
- Negotiable lease Rate.
- Wet sprinkler system.
- Ample parking.
- Full circulation of the building with rear access drive.
- +/- 200' of frontage.
- Building facade signage available.
- Street level monument sign potential.
- Year old roof with warranty.
- 5 year old HVAC units.
- 50 unit apartments on outlot; Opening Spring 2026.
- +25,000 SF of vacancy within the remainder of the center in lease negotiations.
- Adjacent to University of Toledo Medical Center.

PROPERTY OVERVIEW



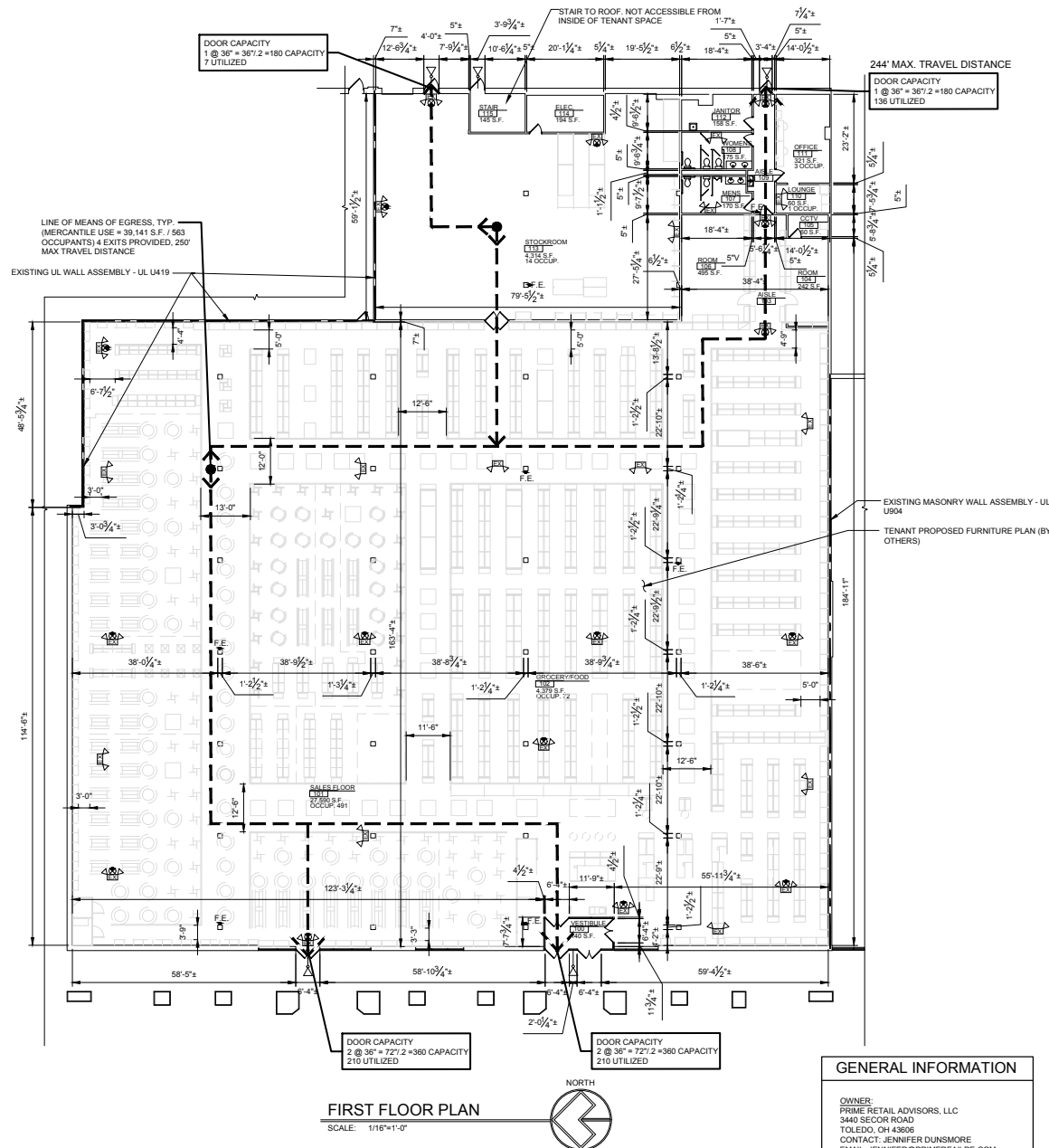
SOUTHLAND SHOPPING CENTER

TOLEDO, OH

SITE PLAN



- AVAILABLE SPACE
 - NOT A PART
- N



- 38,345 SF available with dry basement (not included in the square footage, but included in the lease); accessible through exterior door.
- Versatile space is ideal for a variety of uses including, grocery, department stores, soft goods, food services, office, assembly, and entertainment.
- 8' Roll up rear door. Owner is willing to install a lift system at Tenant's request.
- White box condition.
- 21' to ceiling height with exposed roof deck.
- Wet sprinkler system.
- Full circulation of the building with rear access drive.
- Year old roof with warranty.
- 5 year old HVAC units.

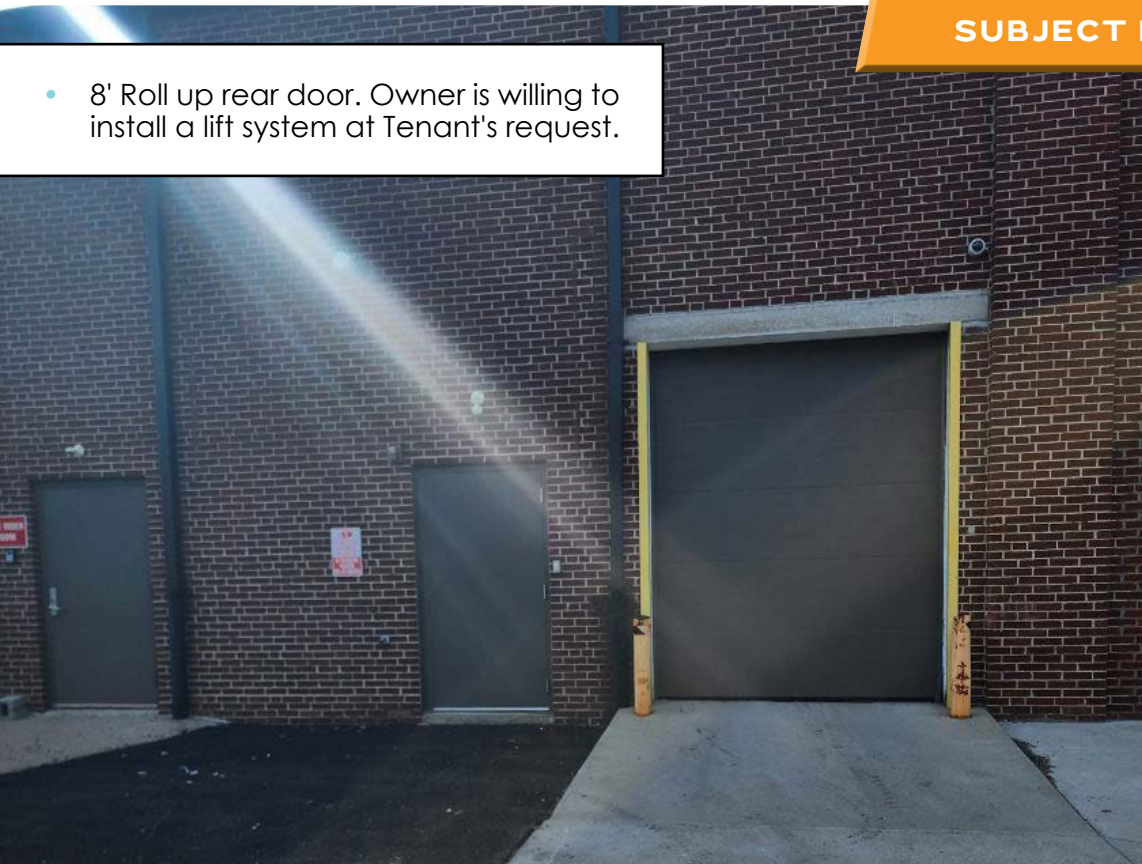
SPACE FOR LEASE
SUBJECT PROPERTY





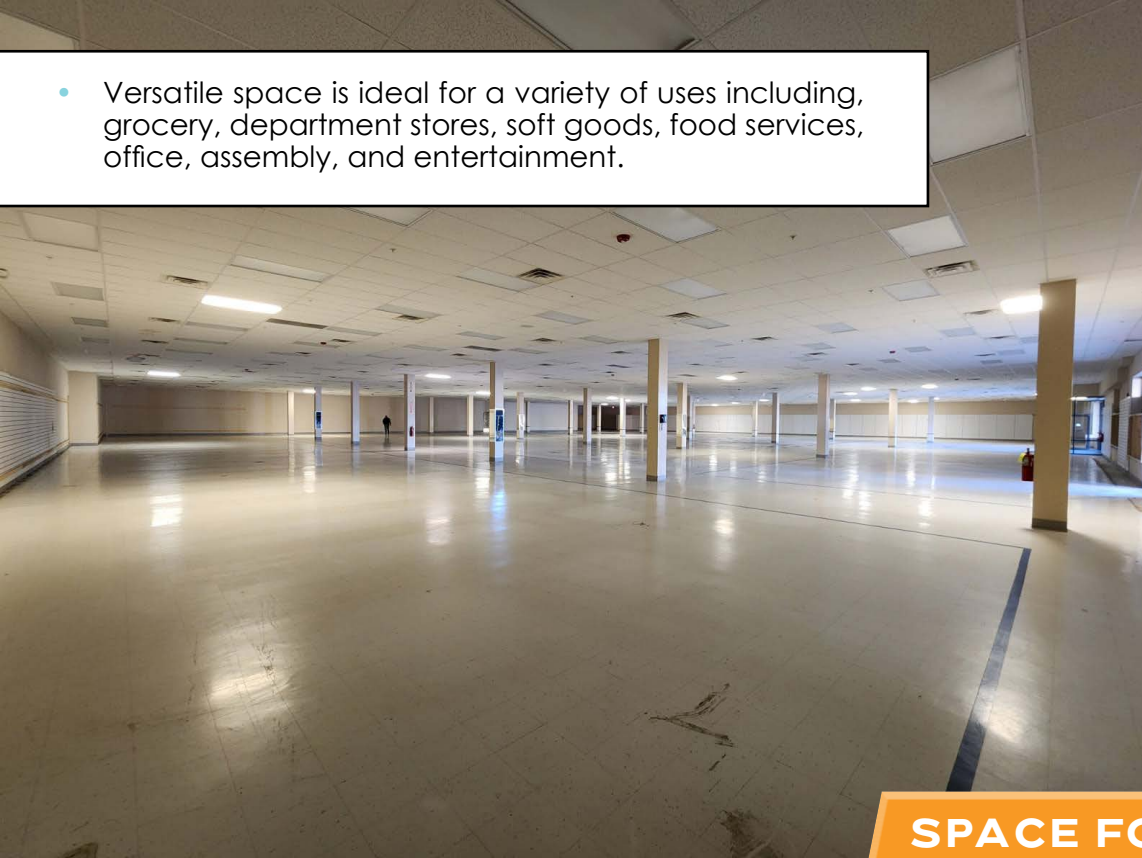
SPACE FOR LEASE
SUBJECT PROPERTY

- 8' Roll up rear door. Owner is willing to install a lift system at Tenant's request.

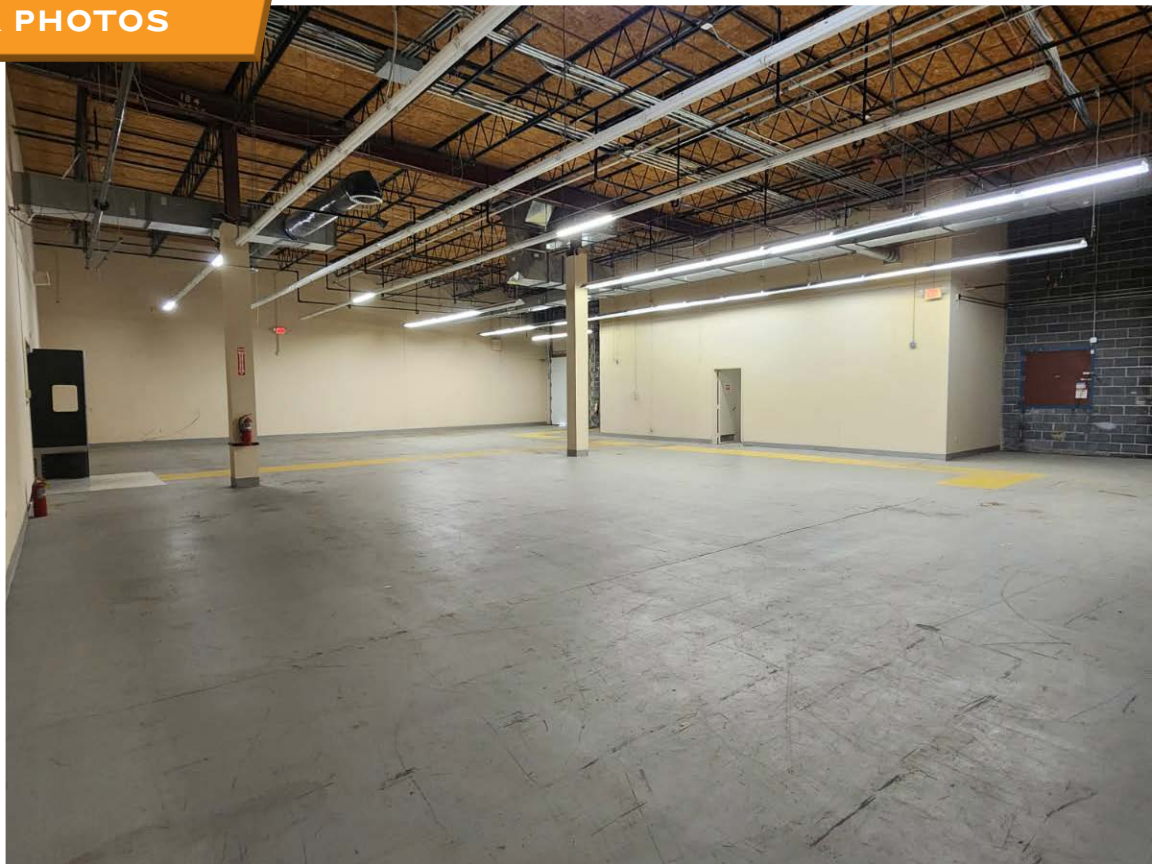
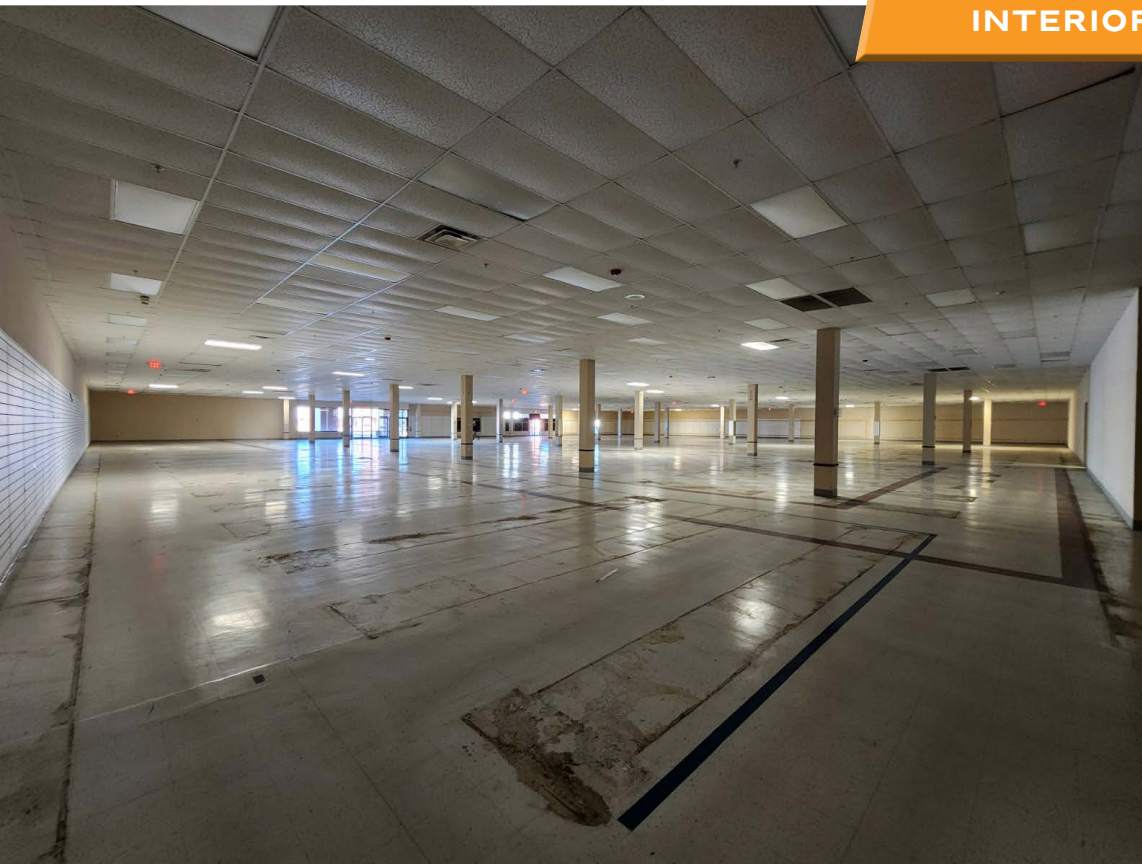


- Ample parking

- Versatile space is ideal for a variety of uses including, grocery, department stores, soft goods, food services, office, assembly, and entertainment.



SPACE FOR LEASE
INTERIOR PHOTOS



TOLEDO, OHIO

- A major Midwestern port city situated on the Michigan border at the western end of Lake Erie
- 55 miles south of Detroit; 100 miles northeast of Fort Wayne; 115 miles west of Cleveland

- **266,000 residents; 4th largest city in Ohio**
- **511,000 people in the 4-county metro area**
- **County seat of Lucas County**
- **#97 "Best Places to Live" - U.S. News**

ECONOMY

- Long known as "The Glass City" due to its long history in glass manufacturing including windows, bottles, windshields, construction materials, and art
- Key industries include advanced manufacturing, automotive, energy, food processing, and logistics and distribution
- \$13.37 billion in capital investment in these key industries has created more than 21,000 jobs in Northwest Ohio in the last 5 years
- Located in the heart of the North American marketplace; can reach more than 60% of U.S. and Canadian markets within a day's drive
- Home to a substantial automotive industry that is recognized as one of the top automotive supply regions in the U.S.
- Toledo Assembly Complex - Produces 450,000 Jeep Wranglers annually
- Toledo Propulsion Systems - The most productive transmission plant in the country
- A major trade center for the Midwest due to the Toledo Port, the 5th-busiest port on the Great Lakes
- Home to Fortune 500 companies such as Dana Holding Corp., Owens Corning, The Andersons, and Owens Illinois
- The largest employers include ProMedica Health Systems (14,465), Mercy Health (8,827), University of Toledo (7,000), Whirlpool Corporation (6,182), FCA US LLC (6,159), and HCR Manorcare (3,293)



TOLEDO COMPLEX



TOLEDO PROPULSION SYSTEMS



TOLEDO PORT

TOLEDO, OHIO

DEVELOPMENTS

- #1 "Tier II Metro in the U.S. for Economic Activity" — Site Selection Magazine (2020)
- Ranked #5 for manufacturing in the U.S. by Business Facilities Magazine (2022)
- Listed in the top 10 for economic development in the country 6 out of the last 7 years by Site Selection Magazine
- Glass City Center - A \$70 million renovation and expansion to the city's convention center; opened in January 2023
- The Glass City Riverwalk - A nearly funded proposed \$200 million development of 300 acres on the Maumee River
- First Solar Expansion - A \$680 million, 2-million square foot expansion of its solar manufacturing plant; the expansion will make the facility the largest in the world outside of mainland China; Expected to be completed in the summer of 2023 and create 700 full-time jobs
- In additional \$270 million research and development center will be constructed adjacent to the solar module manufacturing plant; expected to open in 2024 and create 100 jobs
- Renovations of Spitzer and Nicholas Buildings - Planned mixed-use development for two of the oldest buildings in downtown Toledo; expected to cost \$179 million and spur substantial development in this section of downtown.

DEMOGRAPHICS	1-Mile	3-Mile	5-Mile
Population	10,302	77,360	185,776
Households	5,181	35,010	81,101
Population Median Age	37.1	37.1	37.8
Employees	3,239	28,831	87,879
Median Household Income	\$46,409	\$57,569	\$64,378
Total Businesses	291	2,303	7,556

