

FREESTANDING PRIVATE OFFICE AVAILABLE FOR SALE



FOR SALE: \$490,000

8507 FOREST CITY ROAD, ORLANDO, FL 32810

- 1,632 SF Freestanding Office Building on 0.17 Acres | Zoned ORG-P-O
- Ample Parking, With Front and Rear Parking (6 Spots per 1,000 SF)
- Building Signage and Street Signage Available | Owner-User, High-Visibility Opportunity
- Great Exposure on SR-434; Busy Road with 30k+ VPD
- Prime Connectivity, being just minutes to I-4, SR-414, and Hwy-441
- Can draw from Maitland, Winter Park, Altamonte Springs, and Many Other Orlando Sub-Markets
- Many Single-Family Homes & Apartment Units Nearby | One Mile to Seminole State Campus & Advent Health Corporate Campus



Paige Wolle
Agent-Analyst

☎ 407.951.9120

✉ Paige@ResultsREPartners.com

Vincent Wolle, CCIM, SIOR
Broker - Investment Partner

☎ 407.448.1823

✉ CREManager@gmail.com



RESULTS

REAL ESTATE PARTNERS, LLC

LICENSED COMMERCIAL REAL ESTATE BROKERS

www.ResultsREPartners.com

365 International Pky Lake Mary, FL 32746

FREESTANDING PRIVATE OFFICE

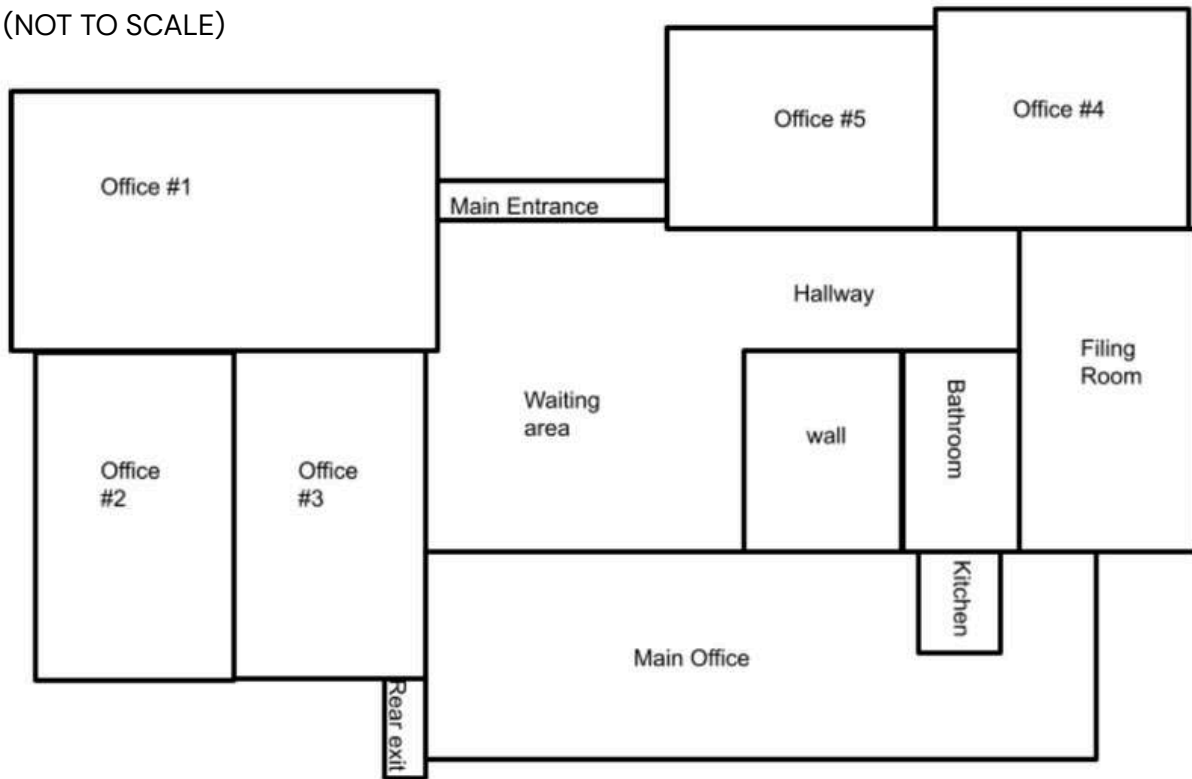
8507 FOREST CITY ROAD, ORLANDO, FL 32810



Scan: Video Tour



FLOORPLAN
(NOT TO SCALE)



 **Paige Wolle**
Agent-Analyst

☎ 407.951.9120
✉ Paige@ResultsREPartners.com

Vincent Wolle, CCIM, SIOR
Broker - Investment Partner

☎ 407.448.1823
✉ CREManager@gmail.com



RESULTS

REAL ESTATE PARTNERS, LLC
LICENSED COMMERCIAL REAL ESTATE BROKERS

www.ResultsREPartners.com
365 International Pky Lake Mary, FL 32746

FREESTANDING PRIVATE OFFICE

8507 FOREST CITY ROAD, ORLANDO, FL 32810



Paige Wolle
Agent-Analyst

☎ 407.951.9120

✉ Paige@ResultsREPartners.com

Vincent Wolle, CCIM, SIOR
Broker - Investment Partner

☎ 407.448.1823

✉ CREManager@gmail.com

All information is believed accurate but should be independently verified. Subject to change.



RESULTS

REAL ESTATE PARTNERS, LLC

LICENSED COMMERCIAL REAL ESTATE BROKERS

www.ResultsREPartners.com

365 International Pky Lake Mary, FL 32746