

# 231 EAST 167TH STREET

THE BRONX

RETAIL FOR LEASE



Fred Jemal  
917.359.6359

Solomon Sharaby  
718.986.7149

59¢

99¢

233 E.

99¢

PARTY SUPPLIES • HOUSE WARE • HARD

ATM ACCESS INC.  
**ATM**  
\$1.25





# 231 EAST 167<sup>TH</sup> STREET

Between Sherman & Grant Avenues | The Bronx

## PROPERTY INFORMATION:

SIZE: 1,200 SF Ground Floor

FRONTAGE: 12.5'

CEILING HEIGHT: 10'

ASKING RENT: Upon Request

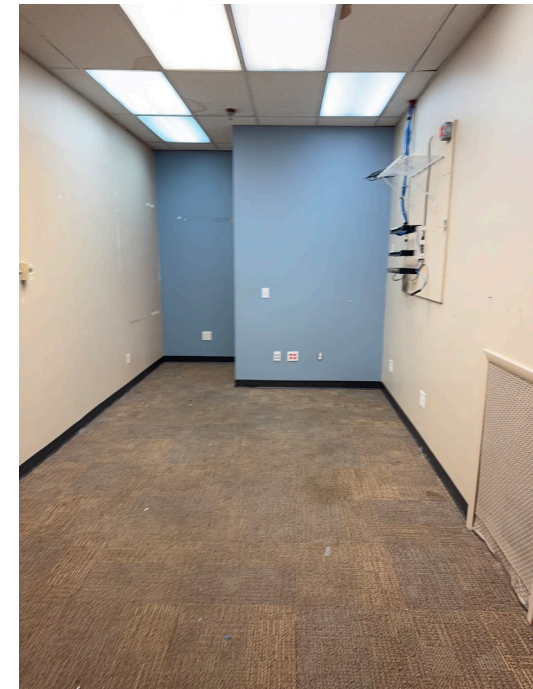
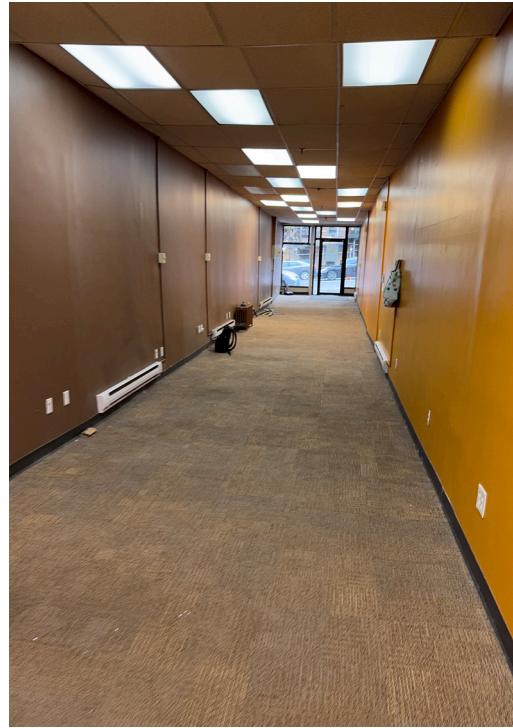
POSSESSION: Immediate

TRANSPORTATION: 4 B D

## HIGHLIGHTS:

- Steps away from 167 Street/Grand Concourse station
- Situated in the heart of Concourse Village
- High foot & vehicle traffic area
- Dense residential neighborhood

## INTERIORS:



FOR MORE INFORMATION, PLEASE CONTACT:

**SOLOMON SHARABY**

718.986.7149

SSharaby@ksrny.com

**FRED JEMAL**

917.359.6359

FJemal@ksrny.com



All information supplied in this marketing presentation and/or flyer is from sources deemed reliable and is furnished subject to errors, omissions, modifications, removal of listings from sale/lease and to any listing condition. Any square footage, dimensions, floor plans and/or technical data set forth are approximations and are subject to further elaboration/confirmation.

# 231 EAST 167<sup>TH</sup> STREET

Between Sherman & Grant Avenues | The Bronx

Floor Plans:

Ground Floor - 1,200 SF

