



CONCOURSE OFFICE PARK

6310 - 6390 LBJ Freeway, Dallas, Texas 75240

MOVE-IN READY SPEC SUITES AVAILABLE



PROJECT FACTS

- >> Rental Rate: \$19.50/SF + E
- >> Built 1971 / Renovated 2022
- >> Total 244,309 SF
- >> On-site Fitness Center
- >> Tenant Lounge
- >> Shared Conference Facility
- >> Extensive LED Lighting Retrofit
- >> Ample Surface Parking
- >> 485 + Underground Parking
- >> Wooded Park-like Atmosphere
- >> Direct Access to 635 with Proximity to US-75 and Dallas North Tollway



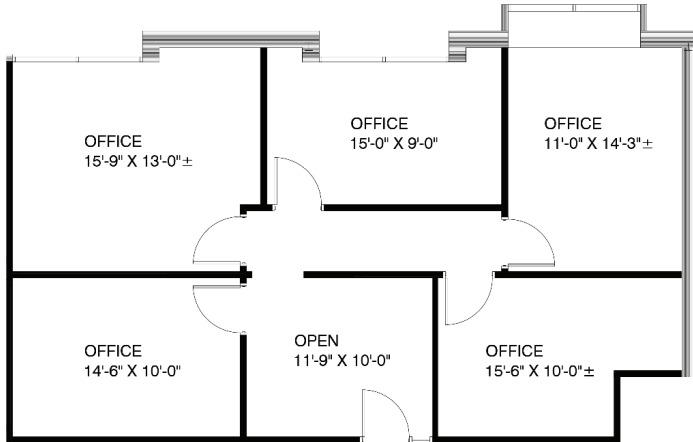
CONTACTS

- >> Andrew Crain
903.624.2711
acrain@dogwoodcommercial.com
- >> Eric Dell
214.208.2121
edell@dogwoodcommercial.com

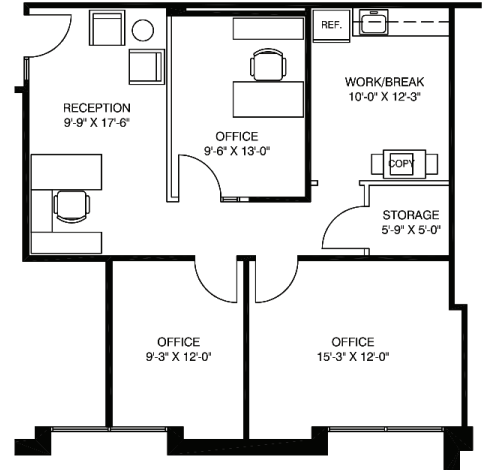
CONCOURSE OFFICE PARK

6310 - 6390 LBJ Freeway, Dallas, Texas 75240

6320 LBJ
SUITE 120 | 1,222 SF



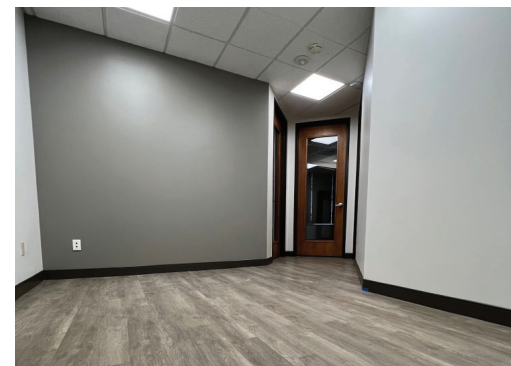
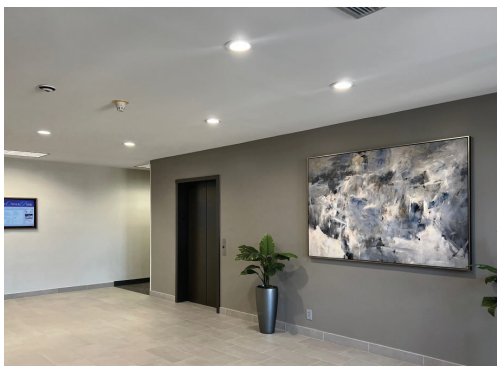
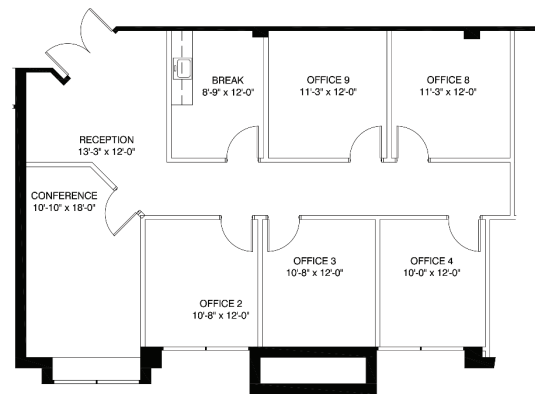
6330 LBJ
SUITE 239 | 973 SF



6350 LBJ
SUITE 158 | 3,160 SF



6350 LBJ
SUITE 260 | 1,547 SF



Andrew Crain
Eric Dell

acrain@dogwoodcommercial.com
edell@dogwoodcommercial.com

903.624.2711
214.208.2121

