

WONDERBLOCK

FOR LEASE



MOUNTAIN WEST
COMMERCIAL REAL ESTATE

ADAM HAWKES

ahawkes@mwcre.com

direct 801.416.1034

[View Profile](#)

ANDY MOFFITT

amoffitt@mwcre.com

direct 801.456.8811

[View Profile](#)

PROPERTY DETAILS

26TH STREET & GRANT AVENUE, OGDEN, UTAH 84404

- New mixed-use development
- 13,450 SF grocery store space
- 36,545 SF of high end retail/food and beverage space available
- Over 350 residential units
- New boutique 90-key hotel
- 100,000 SF class A office building
- Located adjacent to Historic 25th Street

2024 DEMOS



EST. POPULATION

1 MILE » 17,453

3 MILE » 84,393

5 MILE » 162,526



EST. HOUSEHOLDS

1 MILE » 7,541

3 MILE » 32,502

5 MILE » 61,158



EST. AVERAGE HH INCOME

1 MILE » \$63,473

3 MILE » \$81,794

5 MILE » \$93,123

**FULL SERVICE
COMMERCIAL REAL ESTATE**

312 East South Temple

Salt Lake City, Utah 84111

Office 801.456.8800

www.mwcre.com



MOUNTAIN WEST

COMMERCIAL REAL ESTATE

ADAM HAWKES

ahawkes@mwcre.com

direct 801.416.1034

[View Profile](#)

ANDY MOFFITT

amoffitt@mwcre.com

direct 801.456.8811

[View Profile](#)

**FULL SERVICE
COMMERCIAL REAL ESTATE**

312 East South Temple

Salt Lake City, Utah 84111

Office 801.456.8800

www.mwcre.com



WONDERBLOCK

SITE PLAN

- Residential / Amenity
- Grease Shaft
- Grease Interceptor
- Slab Step



BLDG A	1,200 - 2,330 SF
BLDG B	1,200 - 8,056 SF
BLDG C	1,200 - 8,785 SF
BLDG D	20,174 SF
BLDG E	1,200 - 10,660 SF
TOTAL	50,005 SF

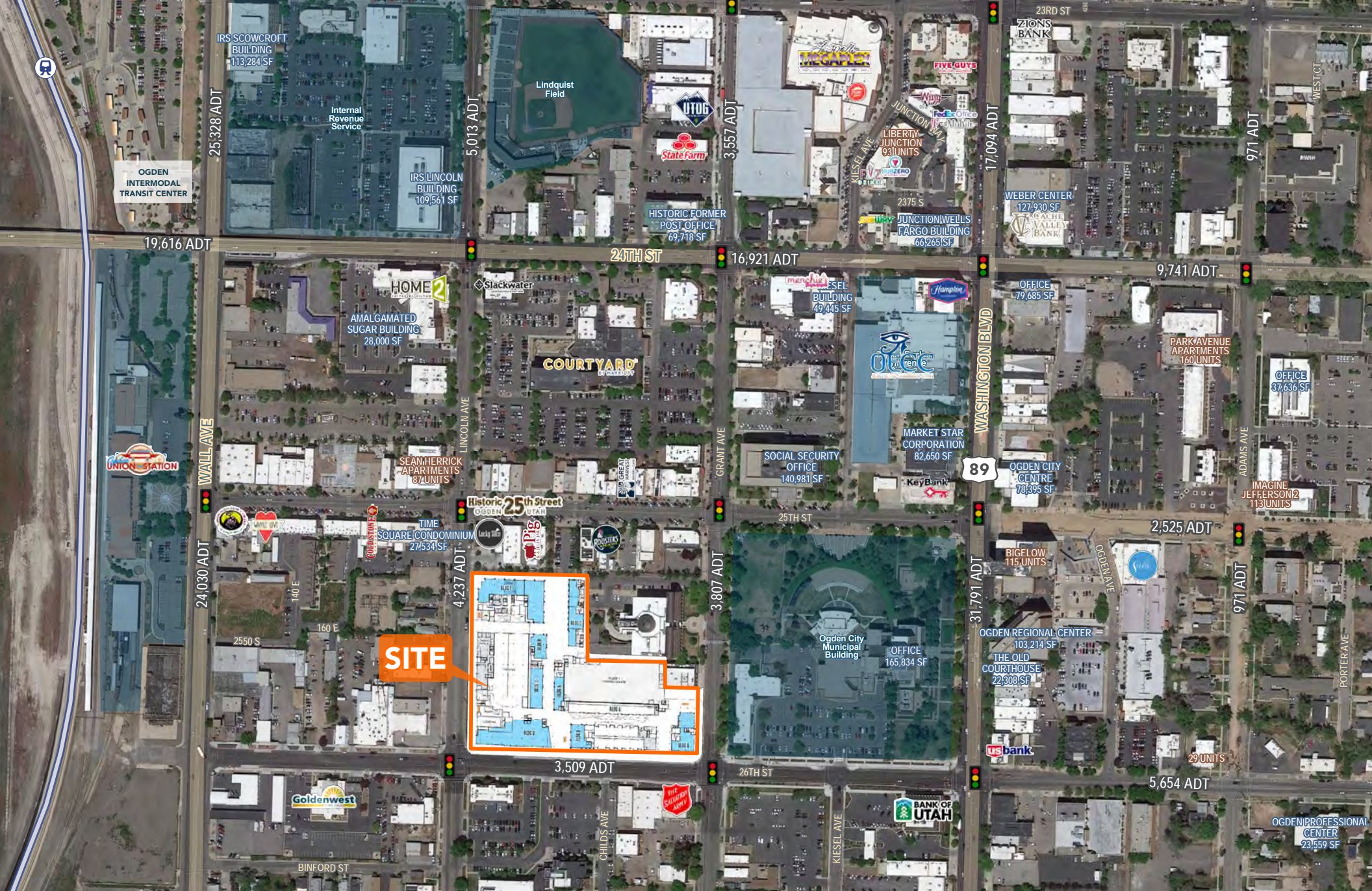


MOUNTAIN WEST
COMMERCIAL REAL ESTATE

ADAM HAWKES
ahawkes@mwcre.com
direct 801.416.1034
[View Profile](#)

ANDY MOFFITT
amoffitt@mwcre.com
direct 801.456.8811
[View Profile](#)

**FULL SERVICE
COMMERCIAL REAL ESTATE**
312 East South Temple
Salt Lake City, Utah 84111
Office 801.456.8800
www.mwcre.com



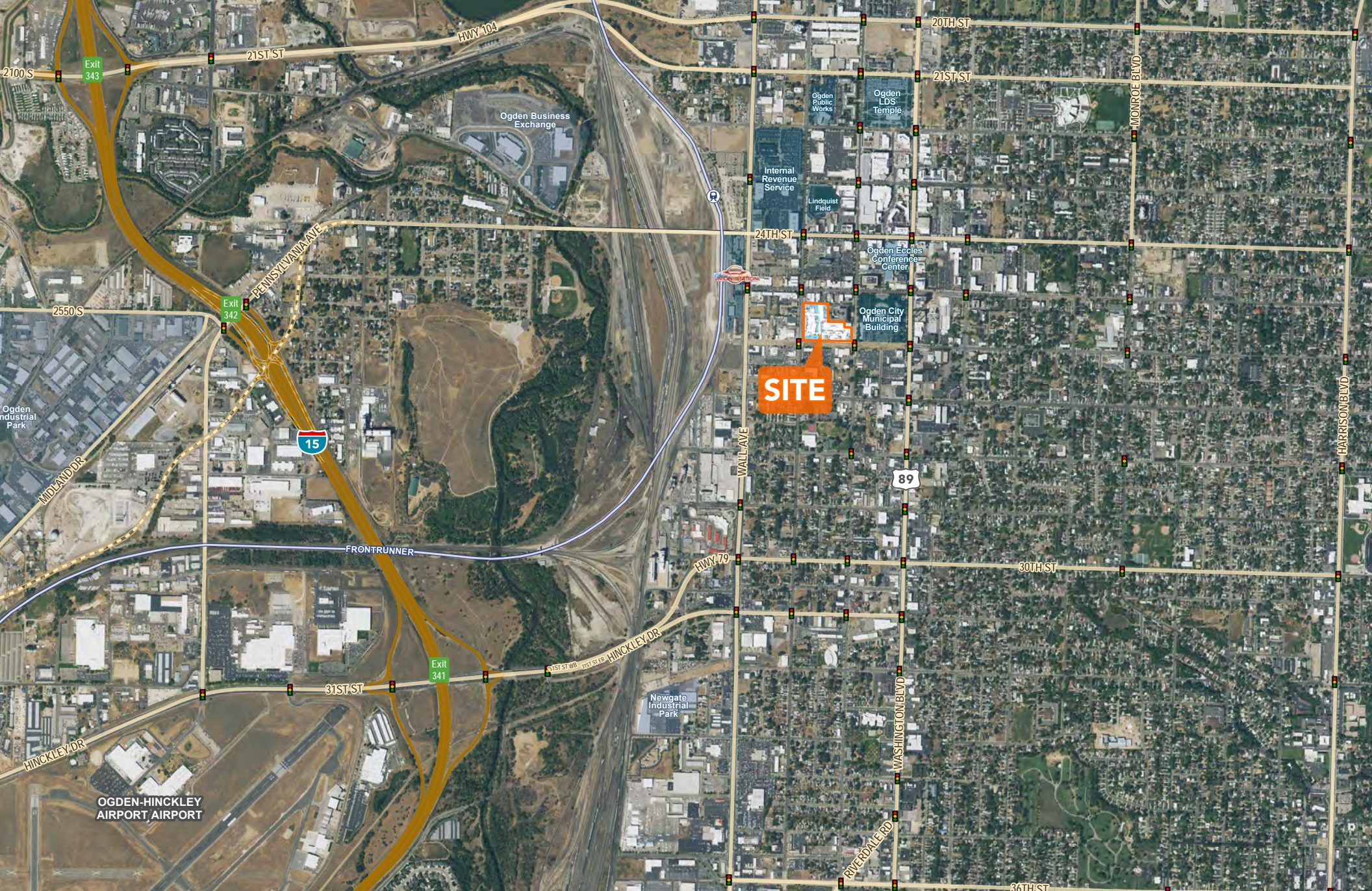
SITE



ADAM HAWKES
 ahawkes@mwcre.com
 direct 801.416.1034
[View Profile](#)

ANDY MOFFITT
 amoffitt@mwcre.com
 direct 801.456.8811
[View Profile](#)

**FULL SERVICE
 COMMERCIAL REAL ESTATE**
 312 East South Temple
 Salt Lake City, Utah 84111
 Office 801.456.8800
www.mwcre.com



MOUNTAIN WEST
COMMERCIAL REAL ESTATE

ADAM HAWKES

ahawkes@mwcre.com
direct 801.416.1034

[View Profile](#)

ANDY MOFFITT

amoffitt@mwcre.com
direct 801.456.8811

[View Profile](#)

**FULL SERVICE
COMMERCIAL REAL ESTATE**

312 East South Temple
Salt Lake City, Utah 84111

Office 801.456.8800

www.mwcre.com