

# COMMERCIAL SALE: BUILDING, BUSINESS & LAND



PRICED AT  
**\$7,950,000**

# COMMERCIAL FOR SALE

 1000 Coletta's Way, Delphos, OH



 ac **5 acres**



**State of the art  
facility-new in 2024**



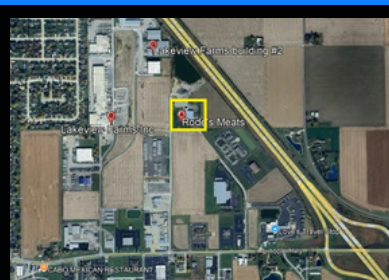
**1 parcel**

**1000 Coletta's Way &  
Ambrose Dr., Delphos, OH**

**Ray Bonifas**  
**419-235-2172**



**Processing area**



**Aerial view/map**



**Retail interior view**

State of the art, meat processing/butcher operation facility, built in 2024, with apx. 17,000 total sq.ft. Facility has 3,000 sq.ft. of retail space, 7,117 sq.ft. of refrigeration, 920 sq.ft. of freezer, very nice livestock hold area & warehouse space & smoke room. Can be offered as turn-key operation with or without equipment. 250 KW back up generator, public restrooms, employee bathrooms/locker rooms & break area. Delphos SD Annual Taxes-\$4,744.90

**SCHEDULE A SHOWING/CONTACT RAY BONIFAS**



**419-235-2172**



**raybonifas32@gmail.com**



**www.rsre.com**