



FOR  
SUBLEASE



## LLOYD 700 BUILDING

**Office Space: 17,446 RSF**

**700 NE Multnomah St, Portland, OR 97232**

This is a rare opportunity to secure a full floor of state-of-the-art medical space at below market rent. This plug-and-play clinic space includes reception, offices, exam rooms and procedure rooms, as well as modern and comfortable staff areas. The space features 360-degree views from the top floor of the Lloyd 700 Building, with ample employee and visitor parking underground. Tenants enjoy superior amenities and security in a professionally managed building.

**JEFF FALCONER, SIOR**

503-542-4346

[jeff@capacitycommercial.com](mailto:jeff@capacitycommercial.com)





# PROPERTY DETAILS



PROPERTY DETAILS & AMENITIES	
<b>Total SF</b>	17,446 SF
<b>Rate</b>	\$34.00/ SF Full Service
<b>Renovated</b>	2021
<b>Parking</b>	2 : 1, 000 SF parking ratio
<b>Expiration</b>	March 2026 Extension available directly with Landlord
<b>Amenities</b>	On-site security, fitness center, Lloyd Cycle Station



**JEFF FALCONER, SIOR**

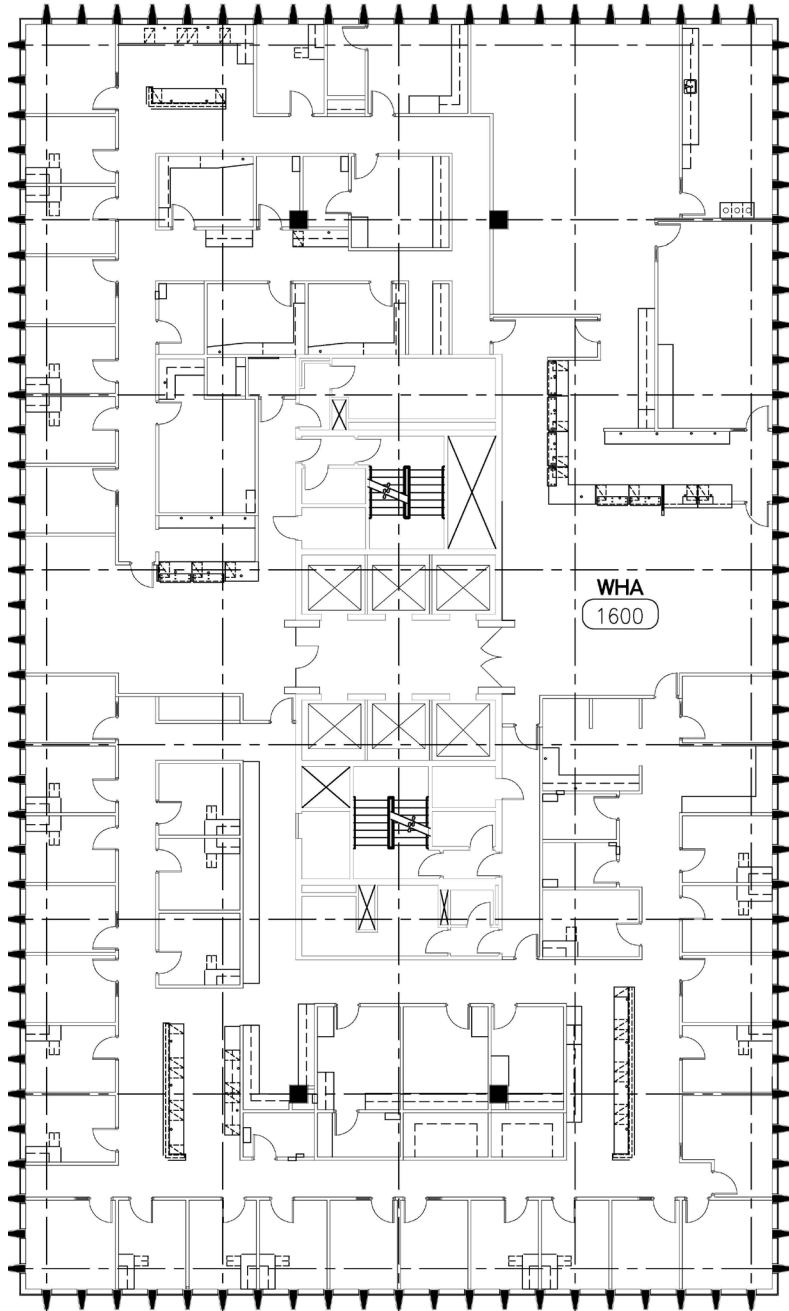
503-542-4346

jeff@capacitycommercial.com





# FLOOR PLAN



**JEFF FALCONER, SIOR**

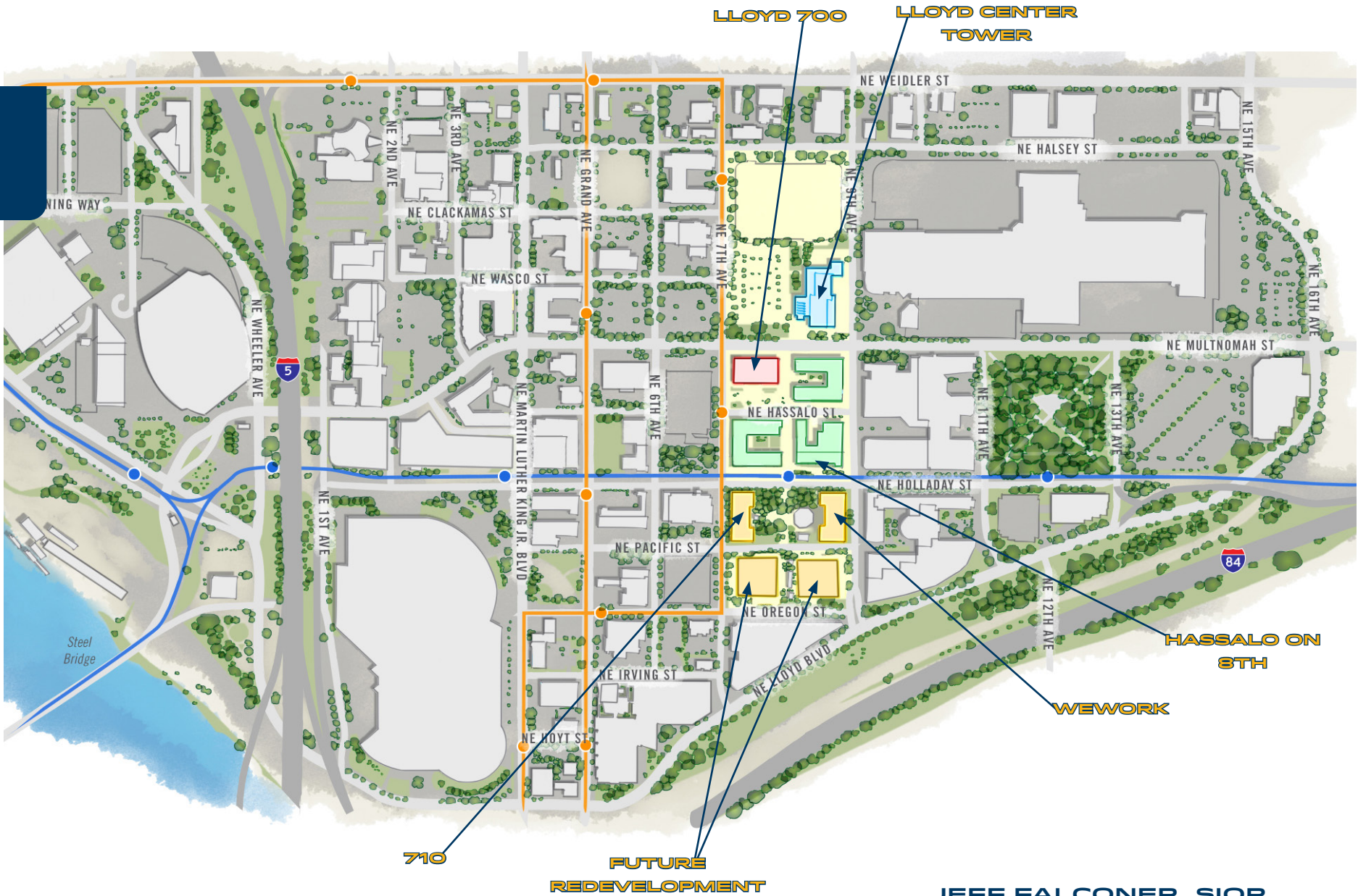
503-542-4346

[jeff@capacitycommercial.com](mailto:jeff@capacitycommercial.com)





# SITE PLAN



**JEFF FALCONER, SIOR**

503-542-4346

[jeff@capacitycommercial.com](mailto:jeff@capacitycommercial.com)



# IMAGE LIBRARY

