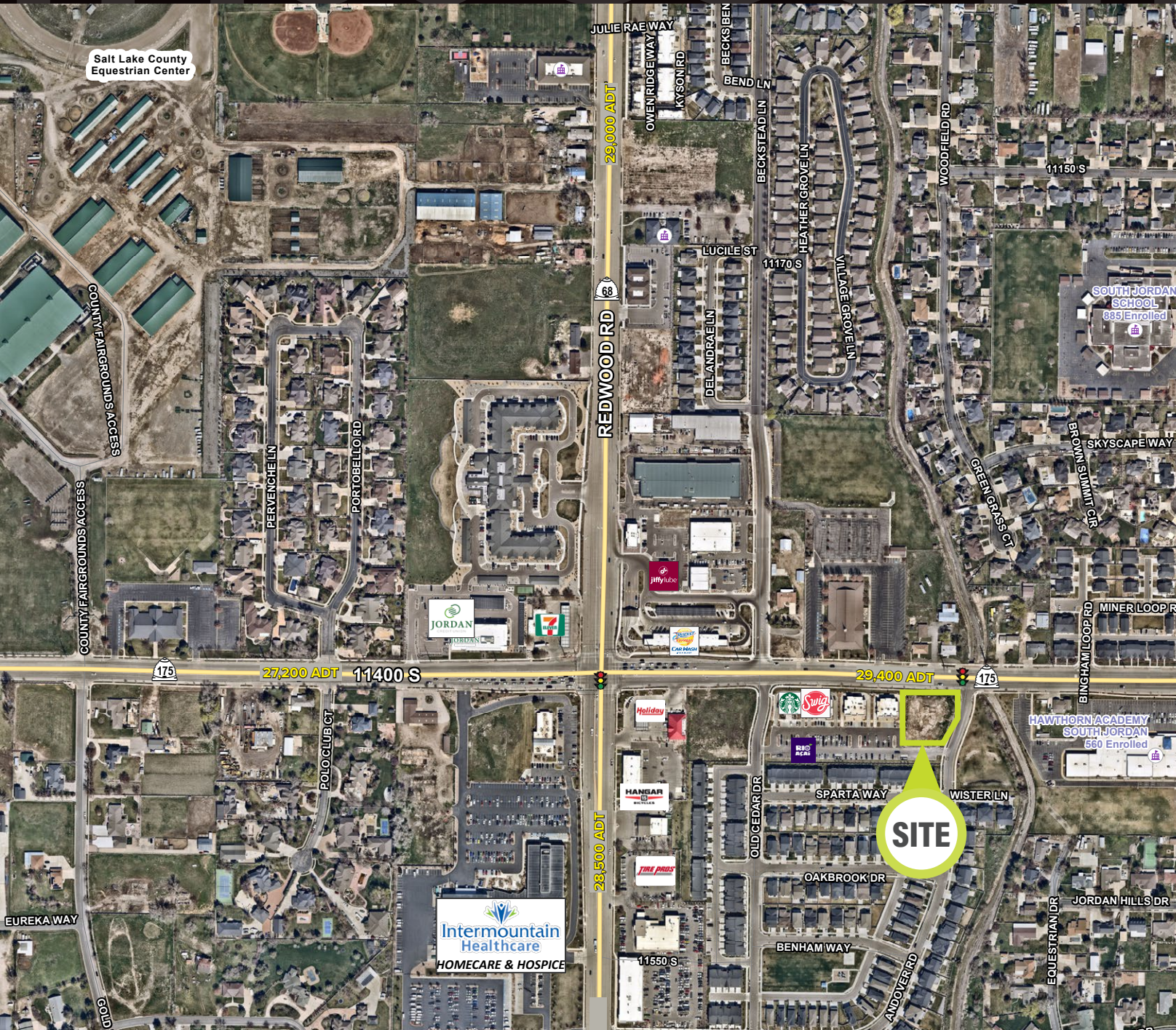


LOCATION



THE SHOPS AT RIDGEVIEW

1563-1641 West 11400 South • South Jordan, Utah



DEMOGRAPHICS

| | 1 MILE | 3 MILE | 5 MILE |
|------------------------------|-----------|-----------|-----------|
| 2024 EST. POPULATION | 10,305 | 94,402 | 290,280 |
| 2024 EST. DAYTIME POPULATION | 3,165 | 60,345 | 132,365 |
| 2024 EST. AVG HH INCOME | \$166,663 | \$154,753 | \$141,457 |
| 2024 EST. HOUSEHOLDS | 3,191 | 30,392 | 94,765 |
| 2024 EST. BUSINESSES | 382 | 5,142 | 12,670 |

TRAFFIC

11400 SOUTH
21,000 VEHICLES PER DAY

REDWOOD RD
27,553 VEHICLES PER DAY



HIGHLIGHTS

- 0.95 ACRES FOR GROUND LEASE OR BTS
- LEASE RATE: CONTACT AGENT
- PAD FRONTING 114TH WITH 200 NEW HOMES BEHIND
- HIGH INCOME AREA: \$111K+ AVERAGE HOUSEHOLD

TANNER OLSON
801.930.6752
tolson@legendcommercial.com

JOE MILLS
801.930.6755
jmills@legendcommercial.com

JACE BANKHEAD
801.787.8137
jbankhead@legendcommercial.com



801.930.6750 | www.legendllp.com
2180 S 1300 E, Suite 240 | Salt Lake City, UT 84106

© Legend Partners, LLP. All rights reserved. All information contained herein is from sources deemed reliable; however, no representation or warranty is made to the accuracy thereof.

SOUTH JORDAN, UT

