

SALE

CIMS 66

73-5573 LAWEHANA STREET

Kailua Kona, HI 96740

PRESENTED BY:

GREGORY OGIN

O: 808.329.6446

gogin@svn.com

HI #RB-16053

SUSIE SCRIBNER

O: 805.403.0301

susie.scribner@svn.com

Hawaii #RS-84227



PROPERTY SUMMARY



OFFERING SUMMARY

SALE PRICE:	\$4,000,000
LOT SIZE:	1 Acres
BUILDING SIZE:	13,500 SF

PROPERTY DESCRIPTION

Introducing a prime industrial property tailored for savvy investors. This 13,500 SF building, erected in 2019. Zoned ML-1a, it offers a strategic location in the thriving West Hawaii area. The sleek, modern design and industrial-grade amenities present a seamless fit for warehouse and distribution endeavors. With functionality and space at its core, this property is currently fully leased.

PROPERTY HIGHLIGHTS

- 13,500 SF modern industrial asset
- Built in 2019 with contemporary construction
- ML-1a zoning supports diverse industrial uses
- Prime location in West Hawaii's Kaloko Light Industrial Area
- Ideal for warehouse, distribution, and light industrial operations
- Efficient, functional building design
- Industrial-grade infrastructure and amenities

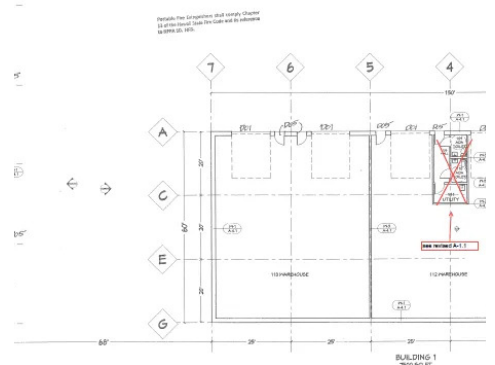
GREGORY OGIN

O: 808.329.6446
gogin@svn.com
HI #RB-16053

SUSIE SCRIBNER

O: 805.403.0301
susie.scribner@svn.com
Hawaii #RS-84227

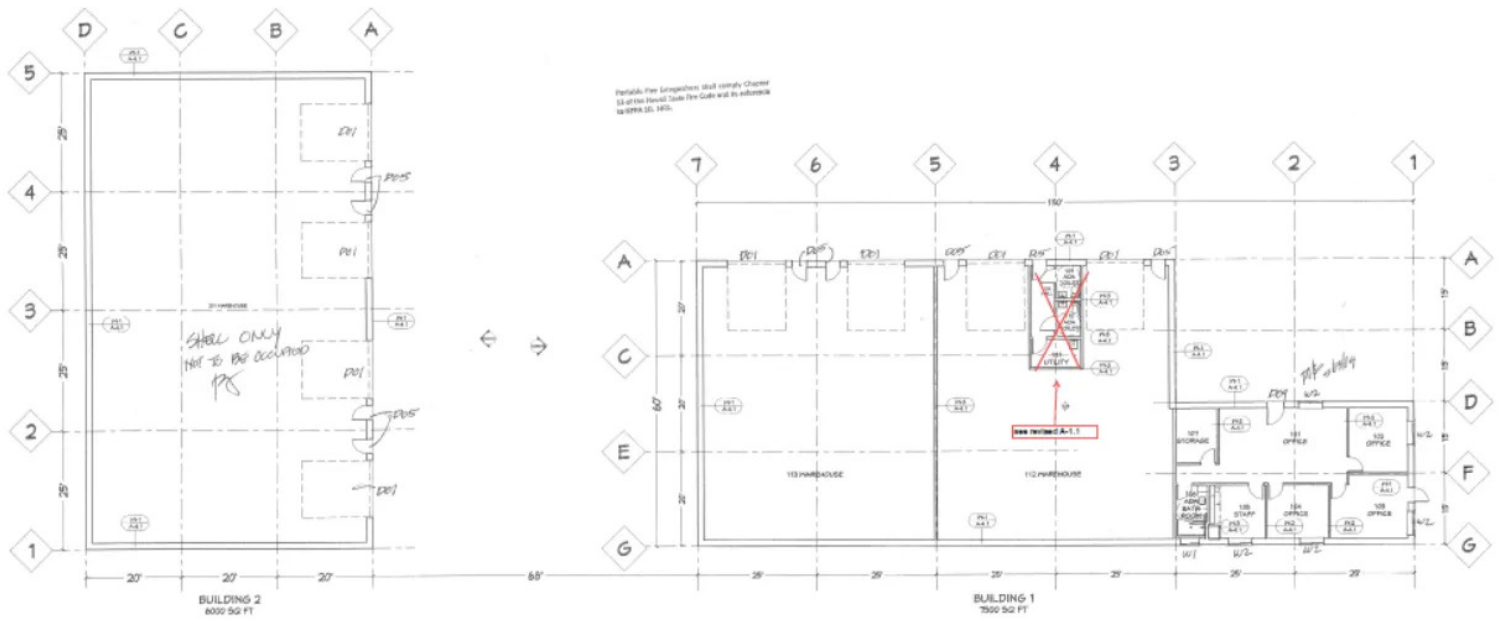
ADDITIONAL PHOTOS



GREGORY OGIN
 O: 808.329.6446
 gogin@svn.com
 HI #RB-16053

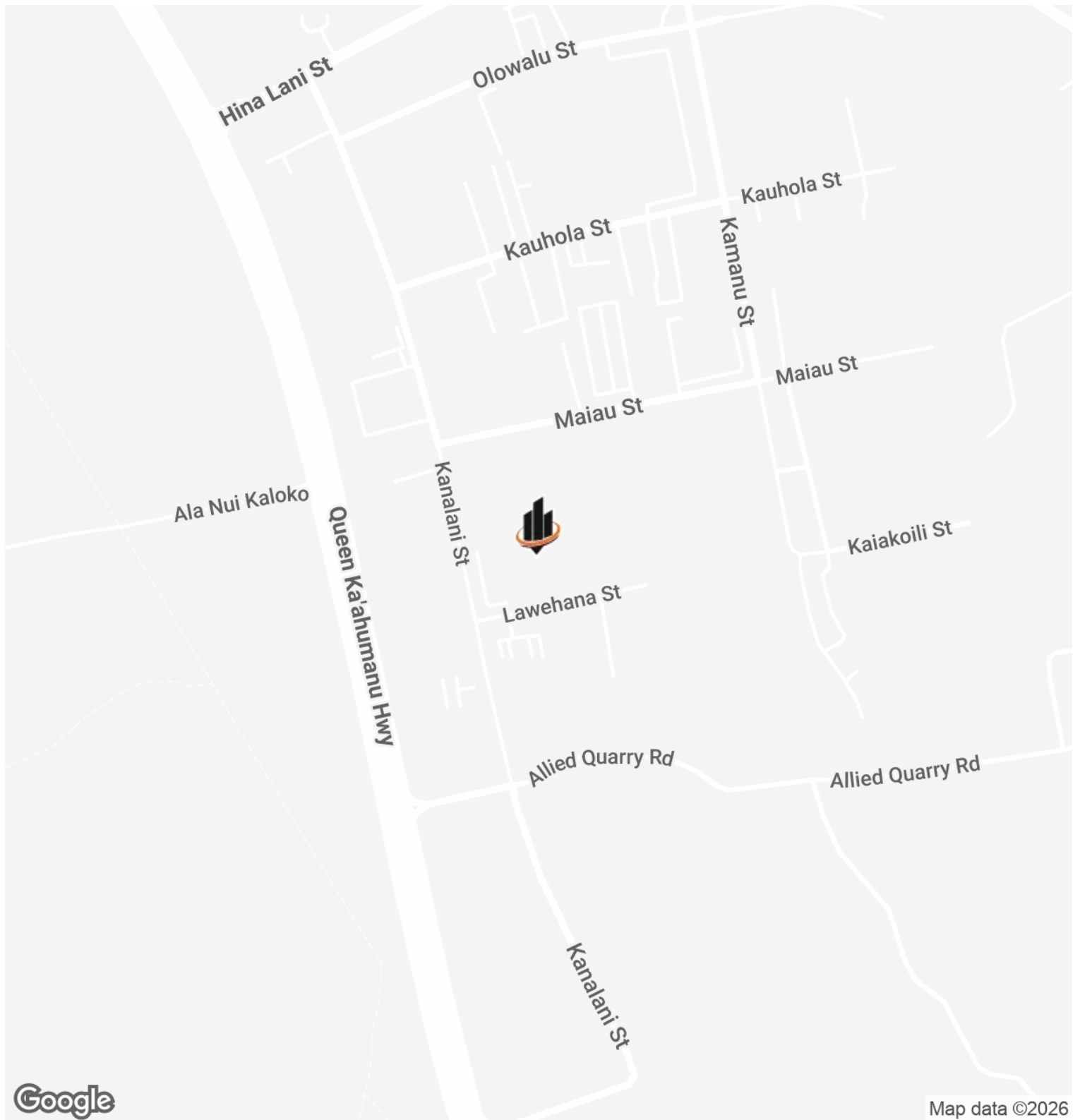
SUSIE SCRIBNER
 O: 805.403.0301
 susie.scribner@svn.com
 Hawaii #RS-84227

SITE PLANS



GREGORY OGIN **SUSIE SCRIBNER**
 O: 808.329.6446 O: 805.403.0301
 gogin@svn.com susie.scribner@svn.com
 HI #RB-16053 Hawaii #RS-84227

LOCATION MAP



GREGORY OGIN

O: 808.329.6446
gogin@svn.com
HI #RB-16053

SUSIE SCRIBNER

O: 805.403.0301
susie.scribner@svn.com
Hawaii #RS-84227

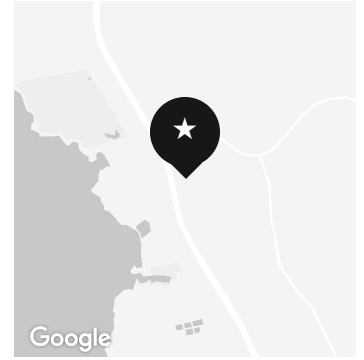
SALE COMPS



CIMS 66

73-5573 Lawehana Street, Kailua Kona, HI 96740

PRICE: \$4,000,000 **BLDG SIZE:** 13,500 SF
YEAR BUILT: 2019 **PRICE/SF:** \$296.30
OCCUPANCY: 100%

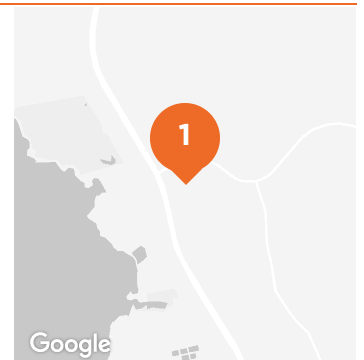


1

BLAKE BUILDING

73-5590B Kauhola Street, Kailua Kona, HI 96740

PRICE: \$3,200,000 **BLDG SIZE:** 9,911 SF
YEAR BUILT: 2006 **PRICE/SF:** \$322.87



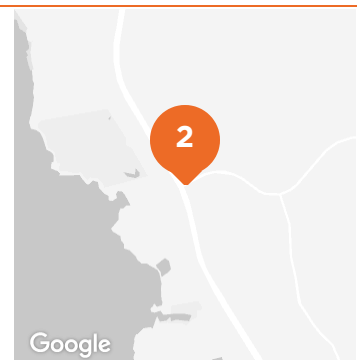
2



R & G TIRE BUILDING

73-4770 Kanalani Street, Kailua-Kona, HI 96740

PRICE: \$6,350,000 **BLDG SIZE:** 21,500 SF
YEAR BUILT: 1988 **PRICE/SF:** \$295.35



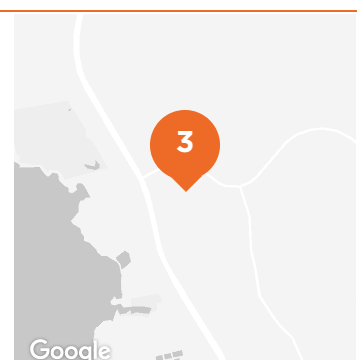
3



HALE KALOKO MAIAU

73-5627 Maiau Street, Kailua-Kona, HI 96740

PRICE: \$6,650,000 **BLDG SIZE:** 26,000 SF
YEAR BUILT: 2022 **PRICE/SF:** \$255.77



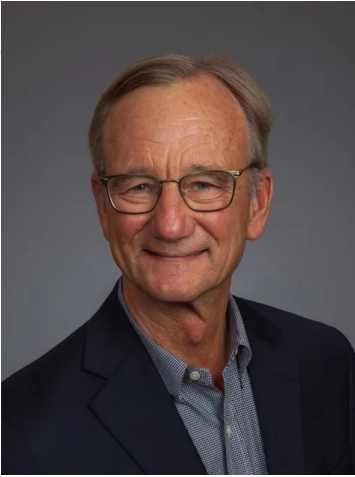
GREGORY OGIN

O: 808.329.6446
gogin@svn.com
HI #RB-16053

SUSIE SCRIBNER

O: 805.403.0301
susie.scribner@svn.com
Hawaii #RS-84227

MEET THE TEAM



GREGORY OGIN

Principal & Managing Director

Direct: 808.329.6446

Cell: 808.987.6446

gogin@svn.com

HI #RB-16053



SUSIE SCRIBNER

Associate Advisor

Direct: 805.403.0301

Cell: 805.403.0301

susie.scribner@svn.com

Hawaii #RS-84227

GREGORY OGIN

O: 808.329.6446

gogin@svn.com

HI #RB-16053

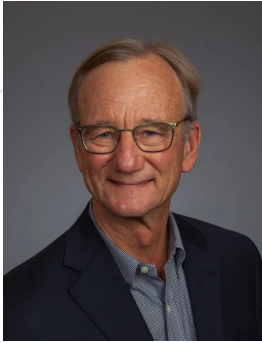
SUSIE SCRIBNER

O: 805.403.0301

susie.scribner@svn.com

Hawaii #RS-84227

ADVISOR BIO 1



GREGORY OGIN

Principal & Managing Director

gogin@svn.com

Direct: **808.329.6446** | Cell: **808.987.6446**

HI #RB-16053

PROFESSIONAL BACKGROUND

Gregory G. Ogin, CCIM, CPM, serves as Principal and Managing Director of SVN | GO Commercial, a division of GO Commercial, LLC. Since 1996, he has brought the commercial division of the former Clark Realty Corporation from three buildings in Kailua-Kona to over 700,000 square feet on the island of Hawaii.

Greg has managed properties since 1981, when he supervised and managed five resort stores and a 10,000 square foot resort department store for Liberty House of Hawaii Island. He was then appointed by the Mayor as Deputy Managing Director of the County of Hawaii, where he was in charge of County Operations in West Hawaii. Greg later owned a small, independent, commercial real estate firm which started as a division of Gerry Rott and Associates.

Greg's numerous activities include serving on the Board of Hawaii Island United Way, Lai Opua 2020, Kona Family YMCA and Hawaii Disciplinary Board (Hawaii BAR). He serves as President of Amfac Community Council, Rotary Club - Kailua-Kona, Kona Kohala Chamber of Commerce, past-President of Kauai Road Runners, and founding President of Children's Advocacy Center. Greg also chairs the Hokulia Parks and Cultural Services Association, Kona Community Development Plan, and Kailua Village Improvement Plan.

EDUCATION

North Hennepin State University
University of Hawaii

MEMBERSHIPS

CCIM, CPM

SVN | GO Commercial
75-5722 Kuakini Highway Suite 214
Kailua Kona, HI 96740
808.329.6446

GREGORY OGIN	SUSIE SCRIBNER
O: 808.329.6446	O: 805.403.0301
gogin@svn.com	susie.scribner@svn.com
HI #RB-16053	Hawaii #RS-84227