



R&R Commercial Realty, Inc.

INDUSTRIAL PARK DR

OFFICE & WAREHOUSE SPACE
INDUSTRIAL PARK DR, MIDDLETOWN DE 19709

THE SPACE

Location **Industrial Park Dr
Middletown , DE 19709**

County **NewCastle**

HIGHLIGHTS

- ❖ Multiple Office and Warehouse Flex space available
- ❖ Unit 701 - Office Space 1,625+/-sf \$18 psf NNN
- ❖ Unit 703 - Office Space 6,400+/-sf \$18 psf NNN
- ❖ Unit 709 - Flex Space 2,241+/-sf \$11 psf NNN
- ❖ Unit 711A - Flex Space 500+/-sf \$11 psf NNN
- ❖ Unit 691 - New Build 24,330+/-sf \$13 psf NNN
- ❖ Unit 723 - New Build 20,730+/-sf \$13 psf NNN

POPULATION

1.00 MILE	3.00 MILE	5.00 MILE
6,354	28,589	48,717

AVERAGE HOUSEHOLD INCOME

1.00 MILE	3.00 MILE	5.00 MILE
\$93,605	\$134,226	\$148,382

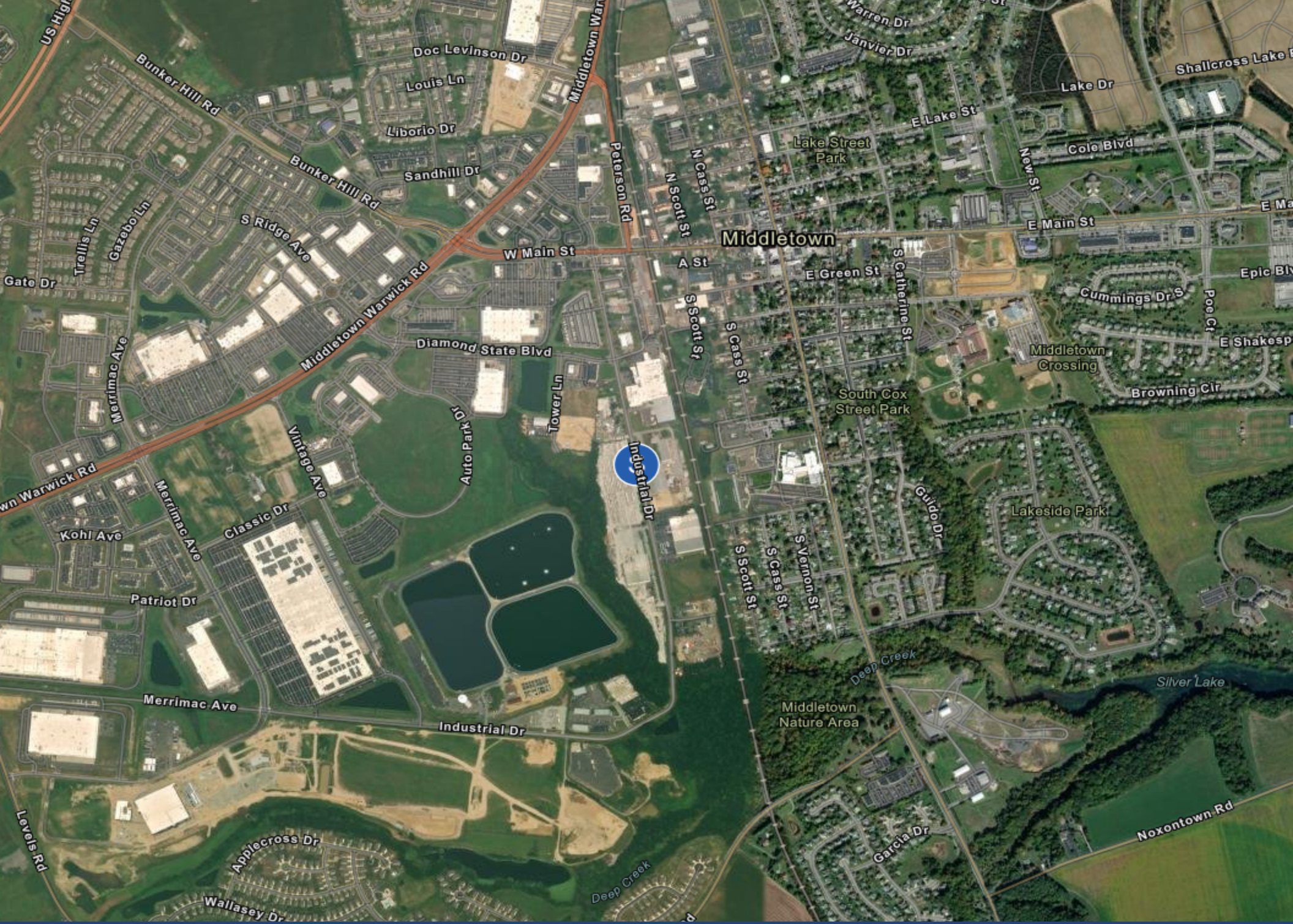
NUMBER OF HOUSEHOLDS

1.00 MILE	3.00 MILE	5.00 MILE
2,588	9,915	16,475



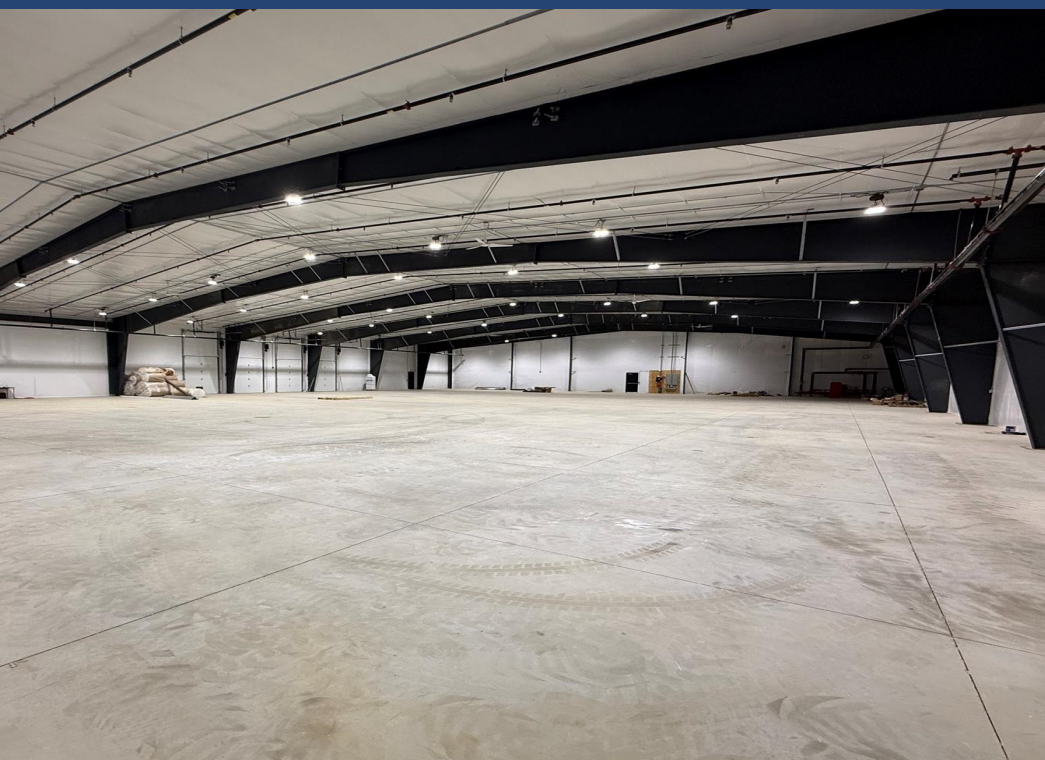
Charles Rodriguez
Broker
(302) 674-3400
ccrod1@aol.com

R&R Commercial Realty
46 S. State Street, Dover, DE 19901



Charles Rodriguez
Broker
(302) 674-3400
ccrod1@aol.com

R&R Commercial Realty
46 S. State Street, Dover, DE 19901



CONFIDENTIALITY and DISCLAIMER

All information contained herein is believed to be accurate, however was obtained from third parties and R & R Commercial Realty, Inc. does not warrant as to the accuracy submitted, subject to changes or modification without notice. Listing Broker represents the sellers interest.

Exclusively Marketed by:

Charles Rodriguez

R&R Commercial Realty

Broker

(302) 674-3400

ccrod1@aol.com



<http://www.randrcommercialrealty.com>