

Freezer and Dry Space Available

1601 Fairfax Trafficway
Kansas City, KS



Property Details

+ Available Space:

- 30,794+/- SF Freezer/Cooler
- 51,290+/- Dry warehouse



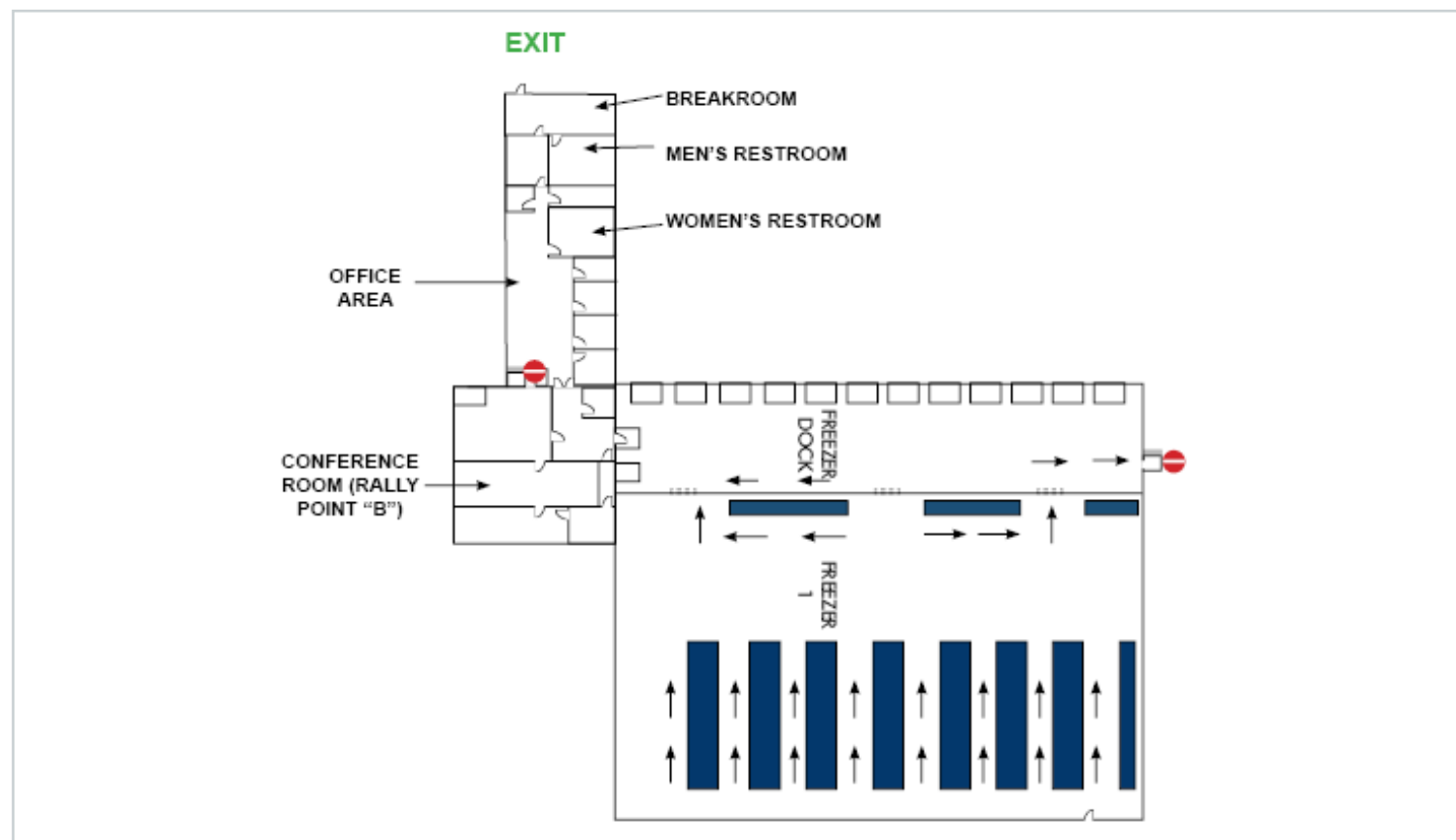
*Can handle 3PL services for freezer/cooler space
Flexibility with pallet storage and 3PL services*

Freezer/Cooler Space



Space Details

- + 30,974+/- SF Total
- + -26 Degree Freezer and 34-40 Degree Cooler
- + Refrigerated Dock Area, with 10 dock doors
- + 40' Clear Height
- + 15+/- Trailer parking spots with reefer plug-ins
- + Fenced Yard
- + Lease Rate: \$10.00 PSF NNN
- + Total Nets: \$3.31
 - Taxes: \$0.30
 - CAM: \$2.89
 - Ins: \$0.12
- + Available 6.1.25
- + 3PL services/pallet storage available through ILG

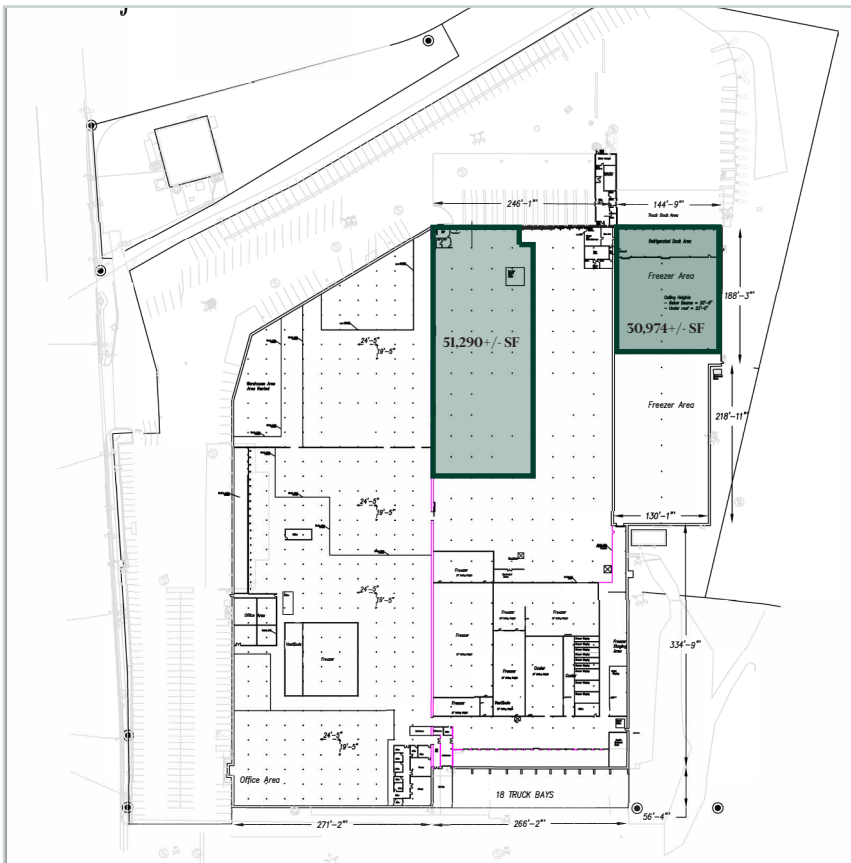


Dry Space



Space Details

- + 51,290/- SF Total
- + 8 Dock High Doors
- + 18' Clear Height
- + Minimal Office
- + Trailer Parking
- + Fenced Yard
- + Lease Rate: \$4.25 PSF NNN
- + Total Nets: \$1.73
 - Taxes: \$0.30
 - CAM: \$1.31
 - Ins: \$0.12
- + Available 9.1.25





Contact Us

Ben Whetstone

Senior Associate
+1 816 968 5809
ben.whetstone@cbre.com

Austin Baier

Executive Vice President
+1 816 968 5841
austin.baier@cbre.com

Mike Mitchelson, SIOR, CCIM

Executive Vice President
+1 816 968 5807
mike.mitchelson@cbre.com

© 2025 CBRE, Inc. All rights reserved. This information has been obtained from sources believed reliable, but has not been verified for accuracy or completeness. You should conduct a careful, independent investigation of the property and verify all information. Any reliance on this information is solely at your own risk. CBRE and the CBRE logo are service marks of CBRE, Inc. All other marks displayed on this document are the property of their respective owners, and the use of such logos does not imply any affiliation with or endorsement of CBRE. Photos herein are the property of their respective owners. Use of these images without the express written consent of the owner is prohibited.