

FOR SALE/LEASE

THE COURTYARD OFFICE & MEDICAL PARK



28200-28336 FRANKLIN ROAD
SOUTHFIELD, MI 48034

PROPERTY HIGHLIGHTS:

- Up to 8,571 SF of medical or general office space
- Immediate access to all major medical centers, convention venues, educational facilities, lodging, dining and transportation
- Excellent linkages by way of I-96/I-696/M-5/M-10, Northwestern Hwy and Telegraph Rd
- Abundant parking at a ratio of 4.52 per 1,000 SF
- Individual buildings for sale

The information provided herein along with any attachment(s) was obtained from sources believed to be reliable, however, Friedman Real Estate makes no guarantees, warranties, or representations as to the completeness or accuracy of such information and legal counsel is advised. All information provided is subject to verification and no liability for reliance on such information or errors or omissions is assumed. The presentation of this property is submitted subject to errors, omissions, change of price or conditions, prior sale or lease, or withdrawal without notice. Copyright © 2026 Friedman Real Estate. All rights reserved.

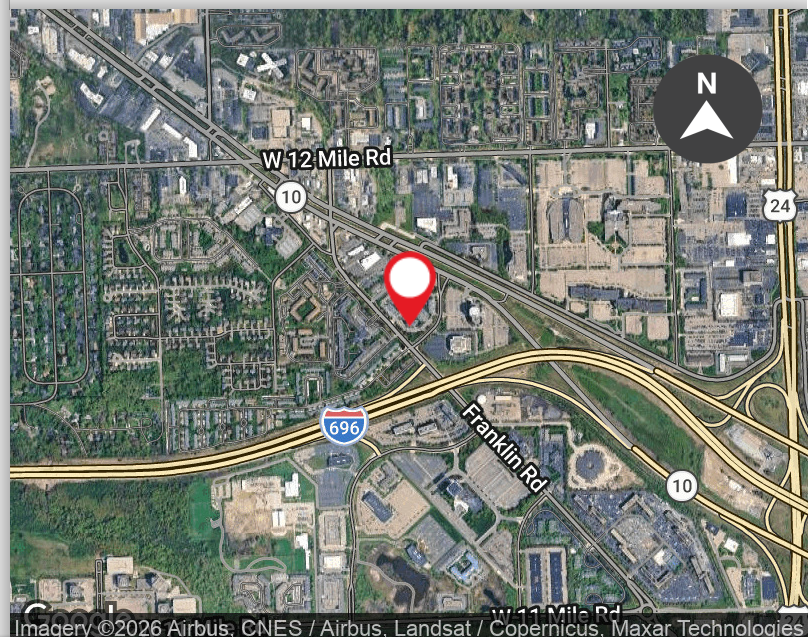
FOR MORE INFORMATION PLEASE CONTACT:

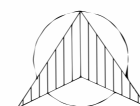
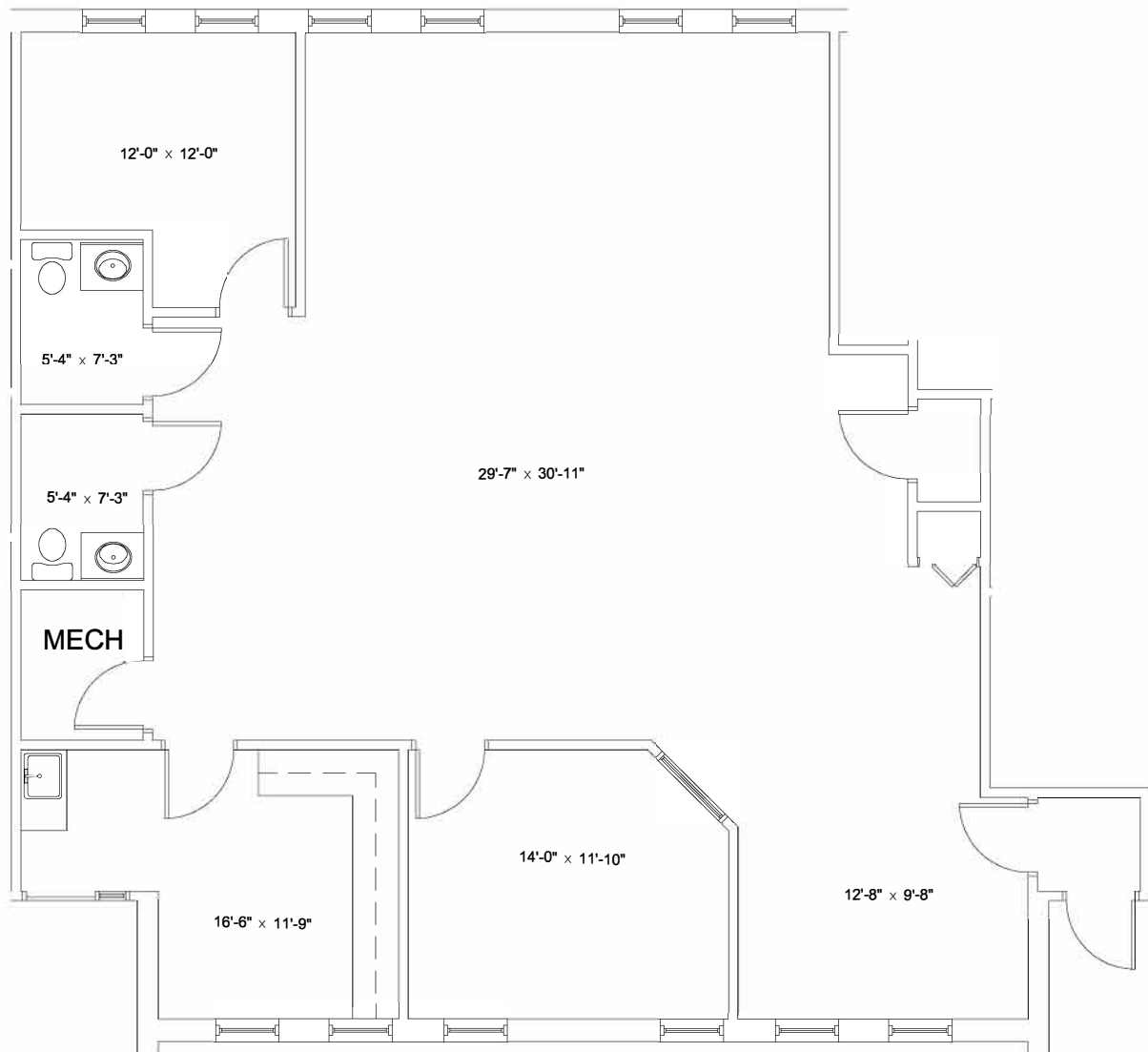


ROBERT MOON
robert.moon@freg.com

248.324.2000

eCODE 509





NORTH
SCALE :
1/8"=1'-0"



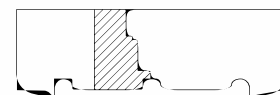
FRIEDMAN
REAL ESTATE

34975 W. Twelve Mile Road
 Farmington Hills, MI 48331
 Phone: 248.324.2030 Fax: 248.324.9238
 Web: www.friedmanrealestate.com

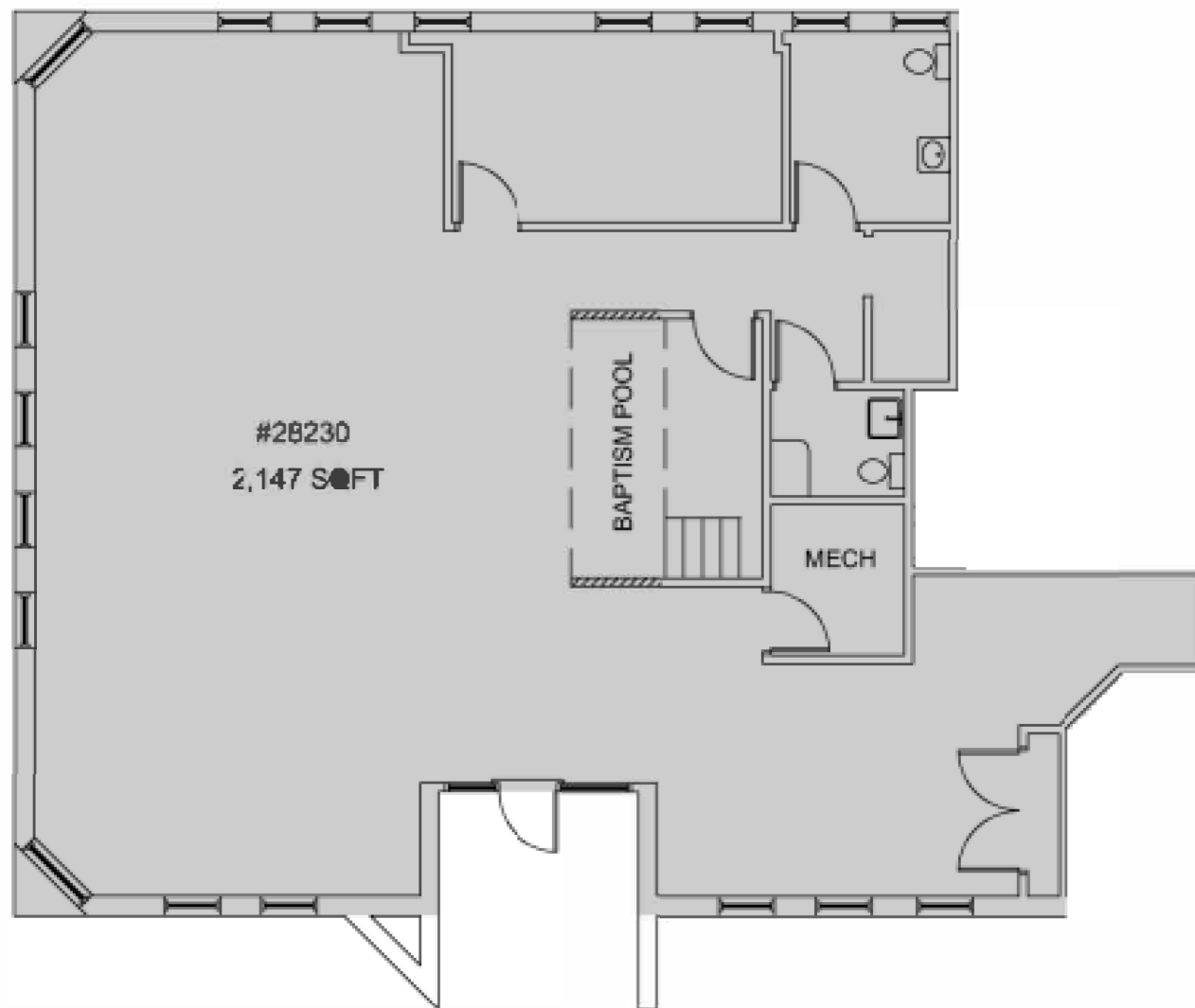
COURTYARD OFFICE PARK
28246 FRANKLIN
SOUTHFIELD, MI

#28246
1,794 SQFT
 FOR DETAILS PLEASE CALL
 248-324-2000

KEYPLAN

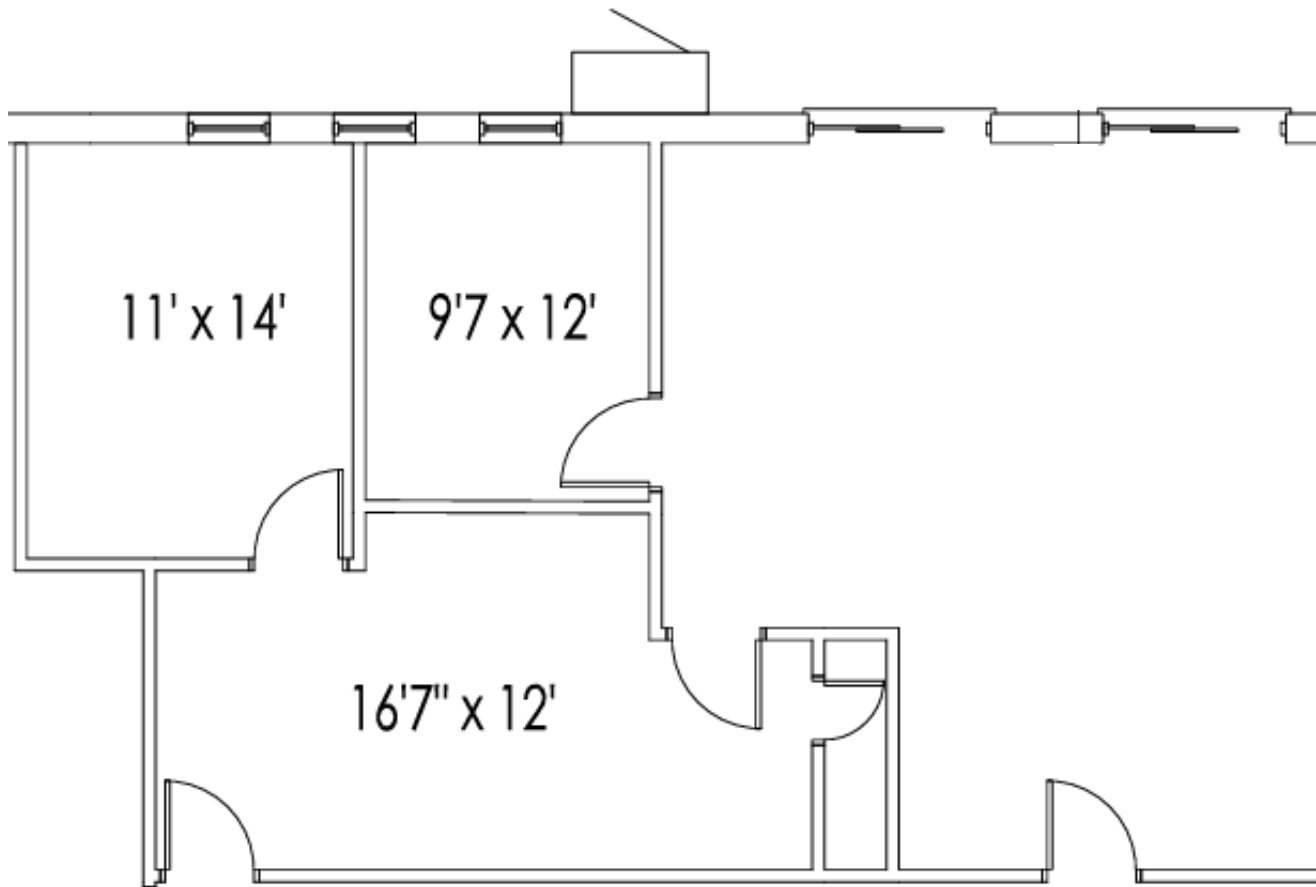


**NOT TO SCALE
NOT FIELD VERIFIED**



**SUITE 28230
2,147 RSF**

**COURTYARD OFFICE PARK
28230 FRANKLIN ROAD
SOUTHFIELD, MI**



HAS NOT BEEN
FIELD VERIFIED
DO NOT SCALE



34975 W. Twelve Mile Road
Farmington Hills, MI 48331
Phone: 248.324.2000 Fax: 248.324.9238
Web: www.friedmanrealestate.com

COURTYARD OFFICE PARK

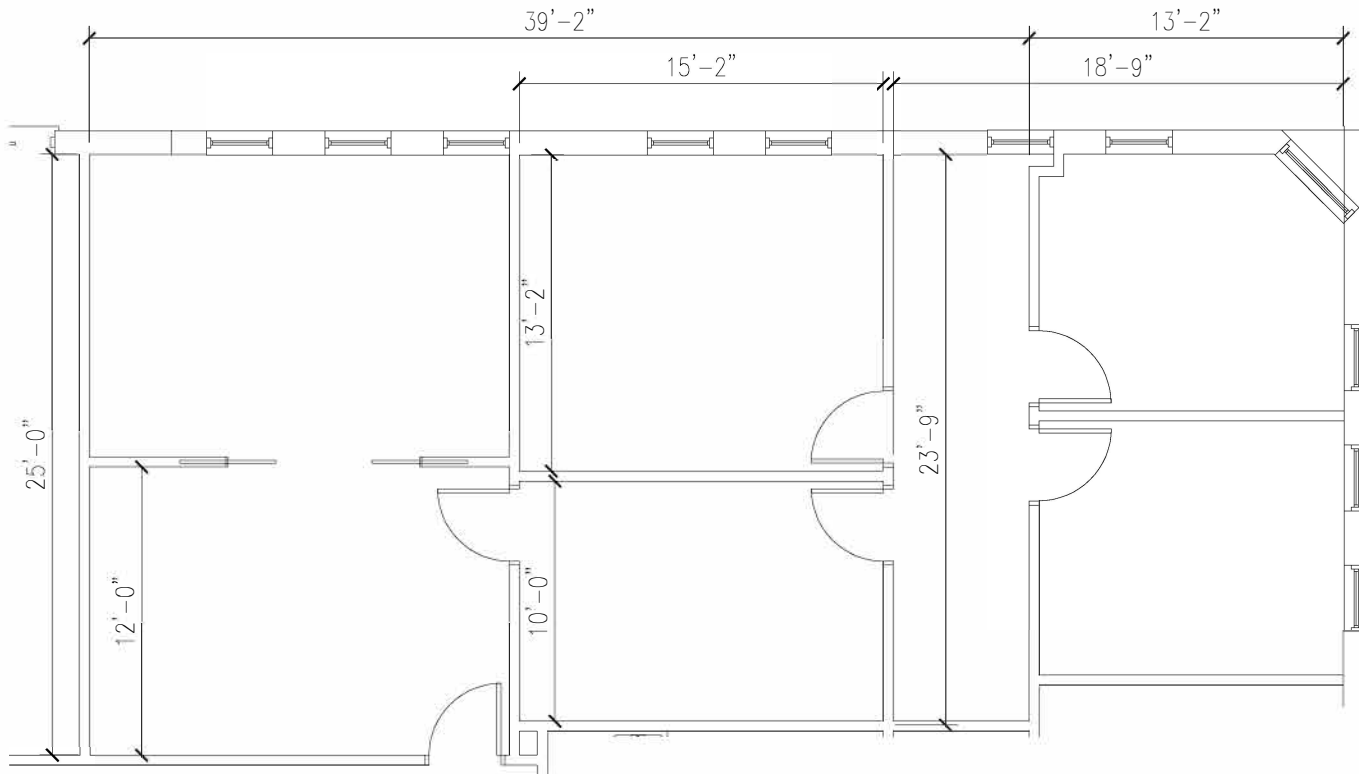
28300 FRANKLIN
SOUTHFIELD, MI

BLDG 2
SUITE 300D
1,243 RSF

KEYPLAN



NORTH



File: 28300-Bldg2_Courtyard(2).dwg
 Date: Sept 24, 2025
 Time: 12:16:21

SCALE :
 1/8"=1'-0"

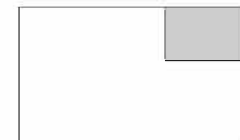


34975 W. Twelve Mile Road
 Farmington Hills, MI 48331
 Phone: 248.324.2030 Fax: 248.324.9238
 Web: www.friedmanrealestate.com

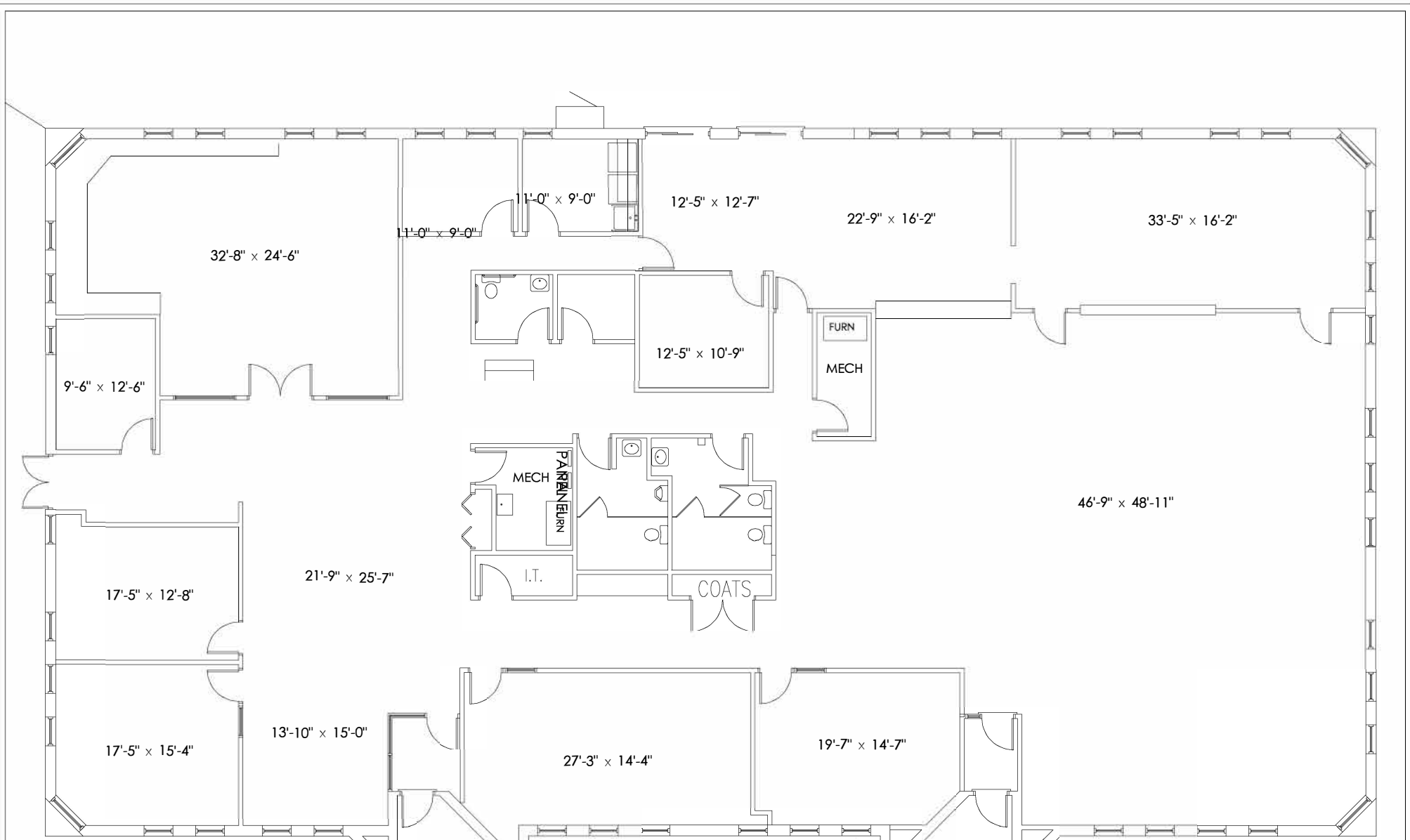
COURTYARD OFFICE PARK
 28300-E FRANKLIN
 SOUTHFIELD, MI

SUITE E
 1,484 RSF
 FOR DETAILS PLEASE CALL
 248-324-2000

KEYPLAN



NORTH



File: 28200-Bldg8_Courtyard.dwg

Date: Feb 13 2026

Time: 7:01:26

#28200
8,571 SQFT
AVAILABLE

SCALE :
DO NOT SCALE

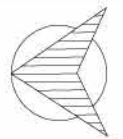


34975 W. Twelve Mile Road
Farmington Hills, MI 48331
Phone: 248.324.2030 Fax: 248.324.9238
Web: www.friedmanrealestate.com

COURTYARD OFFICE PARK
28200 FRANKLIN
SOUTHFIELD, MI

BLDG 8
8,571 SQFT
FOR DETAILS PLEASE CALL
248-324-2000

KEYPLAN



NORTH