

ALL PROPERTIES ARE OWNER MANAGED AND  
STRATEGICALLY LOCATED MINUTES FROM A MAJOR INTERSTATE  
IN THE EAST BAY AND CENTRAL VALLEY.

**Right Space. Best Place.**

[www.cranbrookgroup.com](http://www.cranbrookgroup.com)

## PRESTON TECH CENTER

[6950-6954 Preston Avenue, Livermore, CA 94550](#)



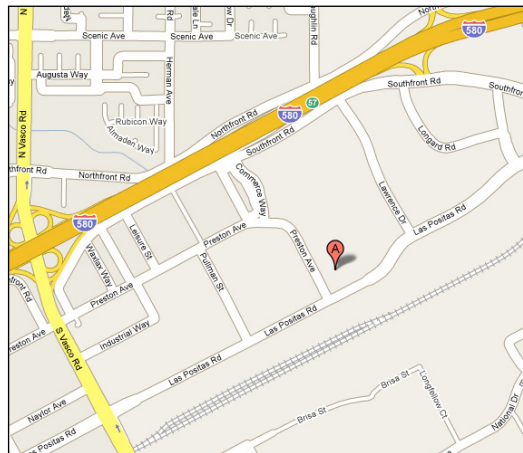
### SEE & LEARN MORE ...

Go to [cranbrookgroup.com](http://cranbrookgroup.com) to view more photos and get more information about Preston Tech Center and our company!

## ATTRACTIVE & STRATEGICALLY LOCATED INDUSTRIAL SPACE!

Preston Tech Center is a single story, concrete tilt-up building providing large open space. With close proximity to I-580 and the South Vasco Road exit in East Livermore, Preston Tech Center is well positioned to service both the Tri-Valley and Central Valley with ease.

A host of key amenities, with location being #1, makes Preston Tech Center the “Right Space. Best Place.” for your business!



## WHAT SETS US APART

- Owner managed ... it makes a difference!
- Excellent access to Interstates 580 & 680
- Large fenced and paved yard
- Concrete tilt-up construction
- Ample parking
- Close to hotels and eateries
- Highly visible monument signage at busy intersection

## WORTH KNOWING ...

Preston Tech Center is comprised of 111,545 rentable square feet. It's managed by a Senior Property Manager, Property Manager and Assistant Property Manager and is part of Cranbrook's larger 3+ million square feet of quality Office, Industrial and Flex space.

The information contained herein is based on reliable data, measurements and calculations. We have no reason to doubt its accuracy, but we do not guarantee it. All information should be verified prior to purchase or lease.

For more information, please contact:

### Joe Fabian

Listing Broker, Newmark

O: (510) 300-0211 | C: (510) 409-4141

[joe.fabian@nmrk.com](mailto:joe.fabian@nmrk.com)

DRE #01013902

### Dave Bruzzone

Managing Director, Newmark

O: (925) 467-0910

[david.bruzzone@nmrk.com](mailto:david.bruzzone@nmrk.com)

DRE #01103408

### Linda Shoemaker

Director of Leasing | Senior Property Manager

O: (925) 866-8070 ext. 414

[lshoemaker@cranbrookgroup.com](mailto:lshoemaker@cranbrookgroup.com)

DRE # 01253655

NEWMARK



OFFICE, INDUSTRIAL & FLEX SPACE  
ALL PROPERTIES OWNER MANAGED AND  
STRATEGICALLY LOCATED MINUTES FROM A MAJOR INTERSTATE  
IN THE EAST BAY AND CENTRAL VALLEY.

**Right Space. Best Place.**  
[www.cranbrookgroup.com](http://www.cranbrookgroup.com)

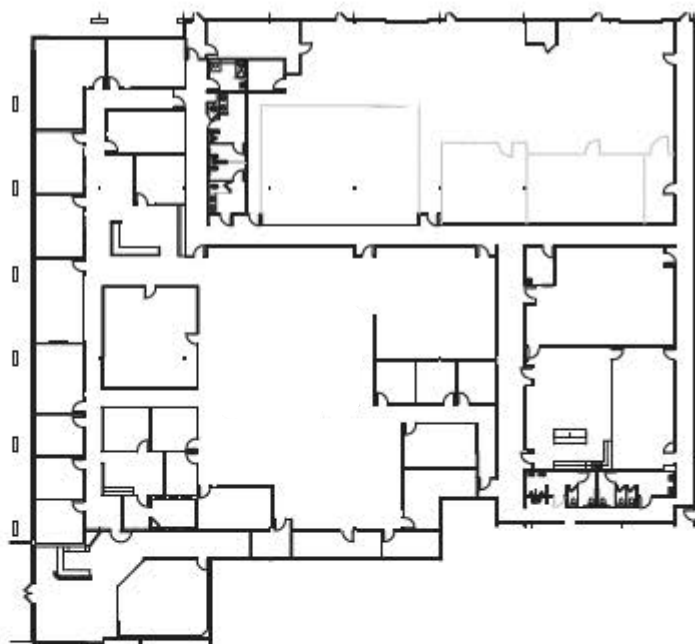
## PRESTON TECH CENTER

6800-6954 Preston Avenue, Livermore, CA 94551



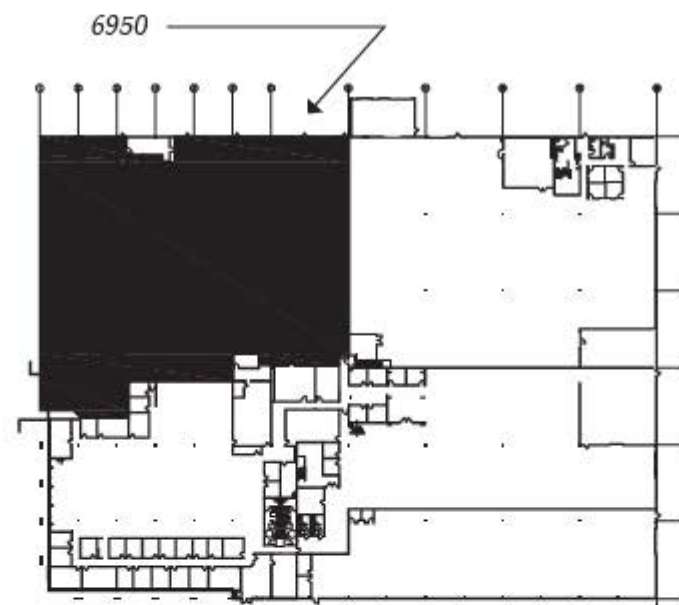
## 6950 PRESTON AVENUE

± 29,436 Rentable Square Feet



## KEY PLAN

*Available Suite in black below.*



*The information contained herein is based on reliable data, measurements and calculations. We have no reason to doubt its accuracy, but we do not guarantee it. All information should be verified prior to purchase or lease.*

*For more information, please contact:*

**NEWMARK**

**Dave Bruzzone**

Managing Director | Newmark  
925.467.0910 | [davidbruzzone@nmrk.com](mailto:davidbruzzone@nmrk.com)  
DRE# 01103408

**Zachary Smith**

Director | Newmark  
510.300.0211 | [zachary.smith@nmrk.com](mailto:zachary.smith@nmrk.com)  
DRE# 01860469



**Linda Shoemaker | RPA**

Director of Leasing | Senior Property Manager  
Cranbrook Group, Inc.  
925.866.8070 x 414 | [lshoemaker@cranbrookgroup.com](mailto:lshoemaker@cranbrookgroup.com)  
DRE #01253655