

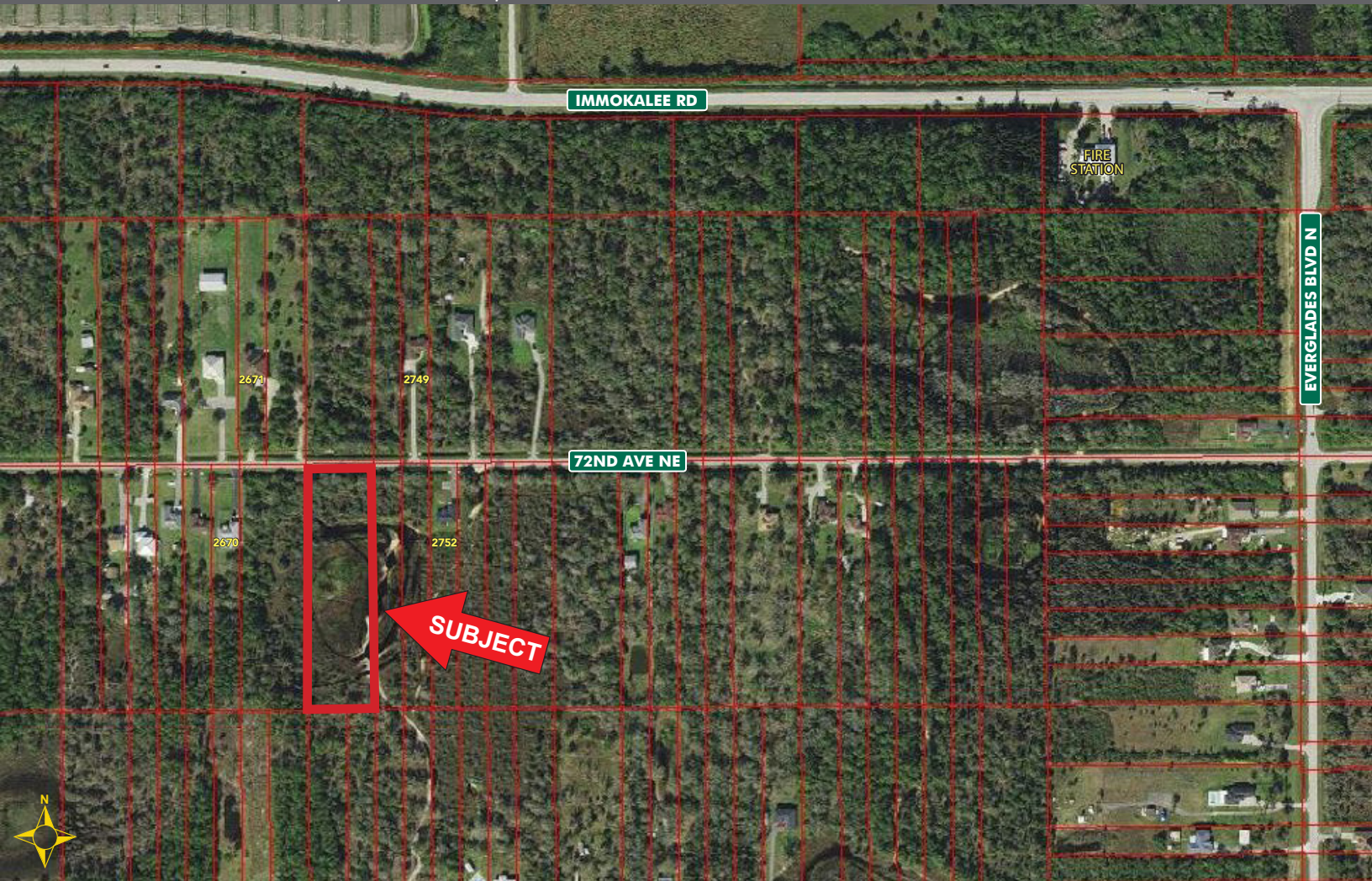
# 2.73± ACRE HOMESITE

## GOLDEN GATE ESTATES



### FOR SALE

72ND AVENUE NE, NAPLES, FL 34120



- PRICE:** BELOW COUNTY ASSESSED VALUE \$87,000 (\$31,870/Acres)
- SIZE:** 2.73± Acres (118,919± SF)
- DIMENSIONS:** 180'± x 660'±
- LOCATION:** One block south of Immokalee Road, ½ mile west of Everglades Blvd N
- ZONING:** E - Estates, Golden Gate Estate Subdistrict (Collier County)
- FLOOD ZONE:** AH [Click here for description](#)
- RE TAXES:** \$621.03 (2024)
- PARCEL ID:** 39148120004

This 2.73± acre homesite offers both convenience and privacy, located off Immokalee Road and Everglades Boulevard N in Golden Gate Estates. Ideally positioned near significant residential and commercial development, the property provides easy access to Publix, shopping centers, restaurants and more. A wetland determination report is available upon request.

#### CONTACT

**FRED KERMANI, CCIM, AIA**  
**Partner**  
239.659.4960  
[Fred.Kermani@CREConsultants.com](mailto:Fred.Kermani@CREConsultants.com)  
[CREConsultants.com/FredKermani](https://CREConsultants.com/FredKermani)

12140 Carissa Commerce Ct, Suite 102  
Fort Myers, FL 33966  
1100 Fifth Ave. S, Suite 404  
Naples, FL 34102

The information contained herein was obtained from sources believed reliable. CRE Consultants makes no guarantees, warranties or representations as to the completeness or accuracy thereof, and is subject to errors, omissions, change of price or conditions prior to sale or lease, or withdrawal without notice.

09/05/25



# 2.73± ACRE HOMESITE

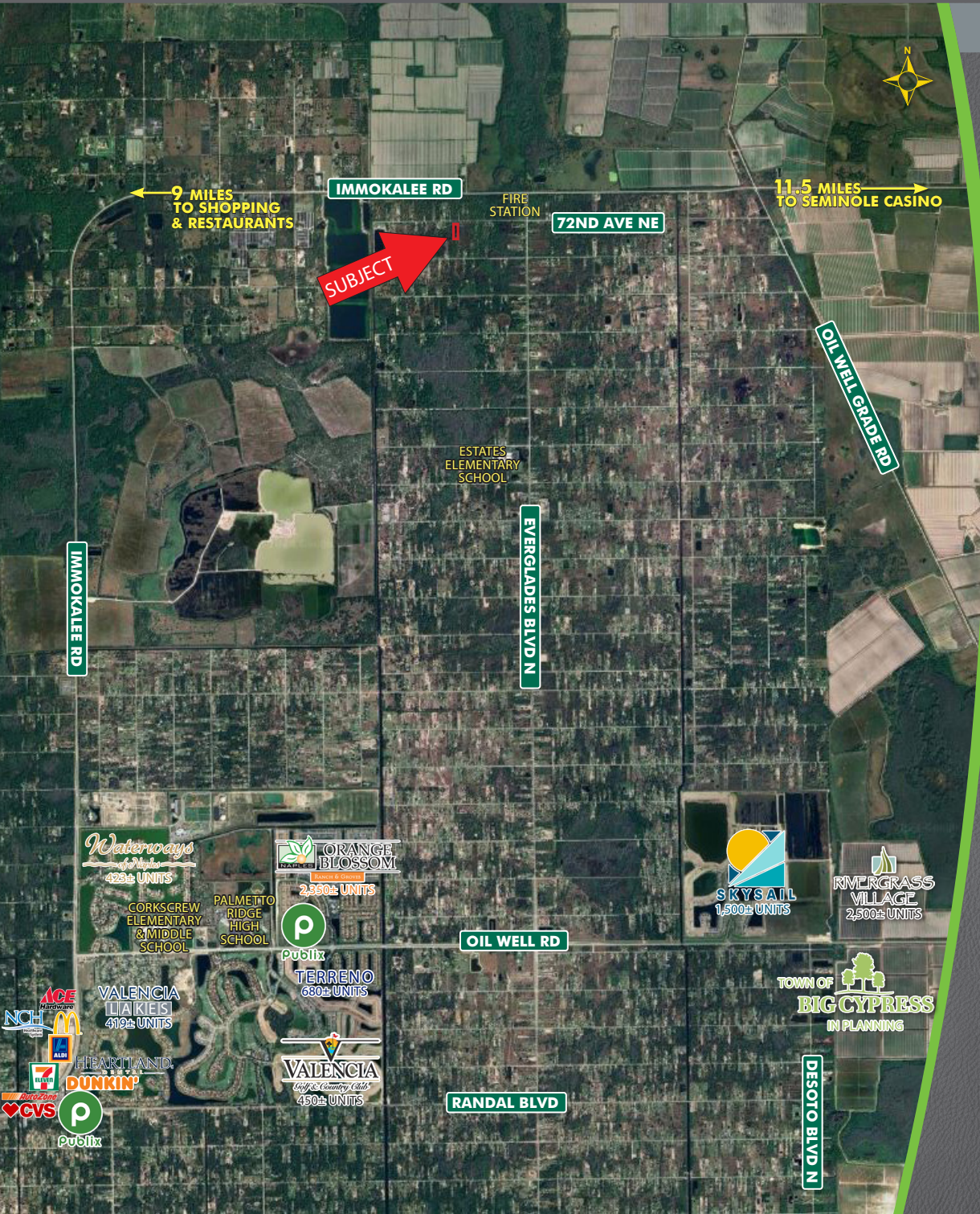
## GOLDEN GATE ESTATES

### FOR SALE

72ND AVENUE NE, NAPLES, FL 34120

### HIGHLIGHTS

- 9± miles from Publix, restaurants, shopping centers, healthcare and more
- Located in one of the fastest-growing areas in Southwest Florida
- Highly sought-after Golden Gate Estates community



### CONTACT

**FRED KERMANI, CCIM, AIA**  
**Partner**  
 239.659.4960  
[Fred.Kermani@CREConsultants.com](mailto:Fred.Kermani@CREConsultants.com)  
[CREConsultants.com/FredKermani](http://CREConsultants.com/FredKermani)

2024 DEMOGRAPHICS	3 MILES	5 MILES	10 MILES
EST. POPULATION	761	4,595	22,184
EST. HOUSEHOLDS	229	1,328	7,086
EST. MEDIAN HOUSEHOLD INCOME	\$88,241	\$91,922	\$89,841

The information contained herein was obtained from sources believed reliable. CRE Consultants makes no guarantees, warranties or representations as to the completeness or accuracy thereof, and is subject to errors, omissions, change of price or conditions prior to sale or lease, or withdrawal without notice.