

MAIN ST & SPRING ST OFFICE

200 East Main Street
Johnson City, TN 37604

Location

Corner of E Main St and Spring St in Downtown Johnson City

Available for Lease

Suite 7: 3,060 SF office on 7th floor
\$13/SF/year NNN

Highlights

5 private offices, open work area, 2 break areas, large conference room, 2 restrooms

Beautiful views of downtown

Accessible via elevator or stairs

Building has security system; keyless entry to space

Proximal to 3 public parking lots

Approx. 0.3 miles from I-26, exit 23

Traffic Counts

E Main St: 7,047 (2022)

Demographics

(2024 Est.)	3 mile	5 mile	10 mile
Population	52,341	80,699	160,499
Median HH Income	\$49,736	\$53,692	\$60,943
Median Age	34.9	37.5	41.5

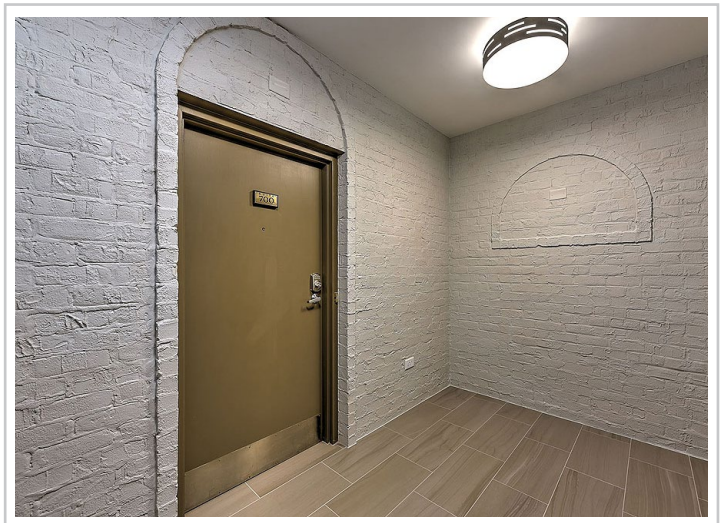
Contact

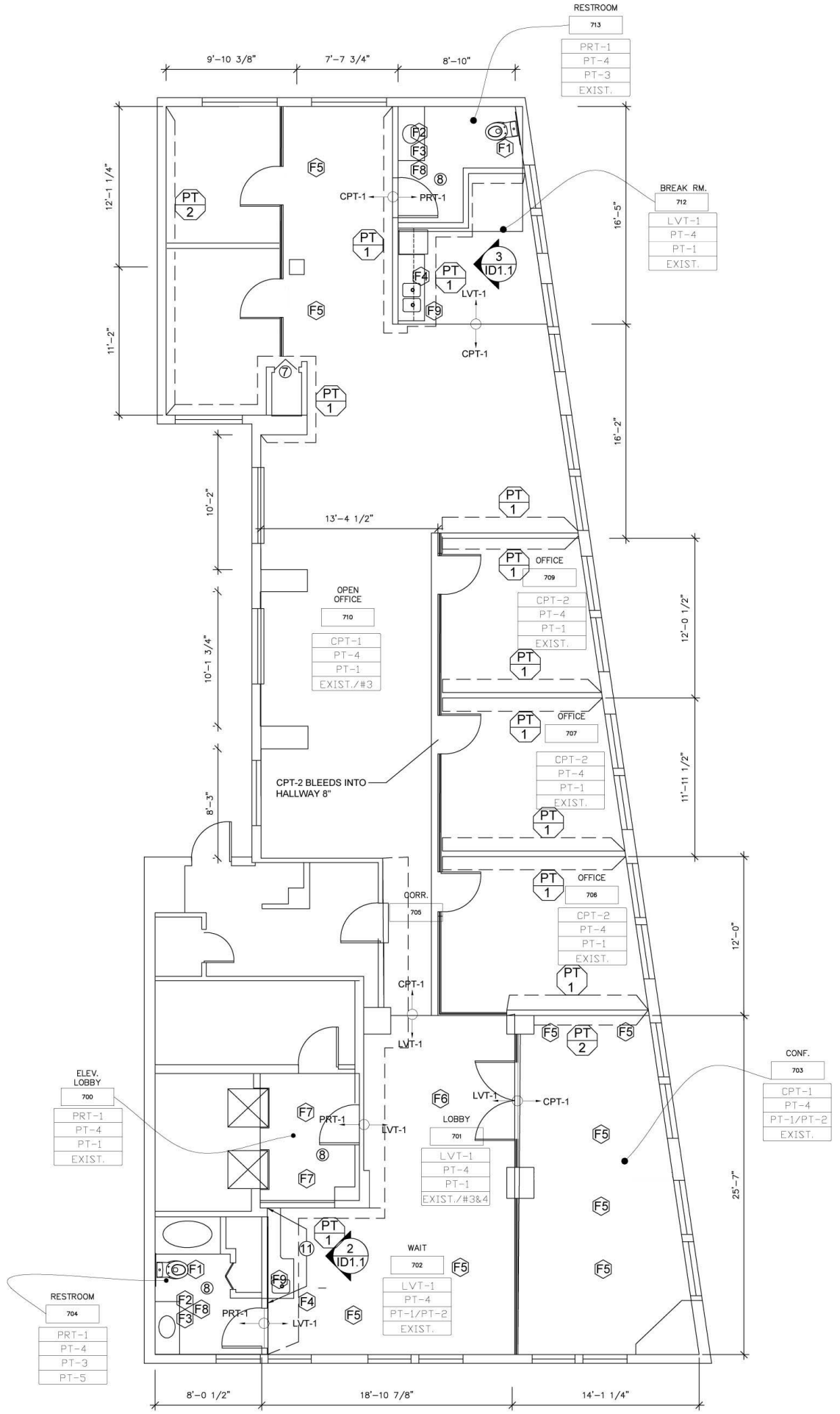
Shannon K. Castillo

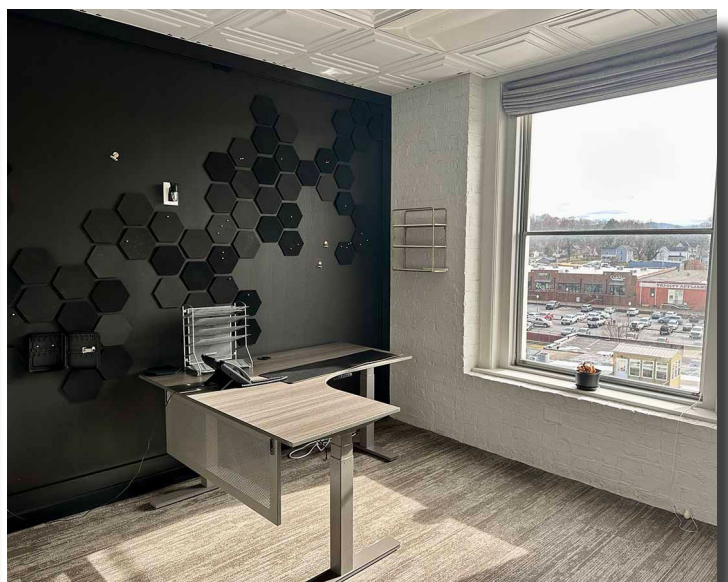
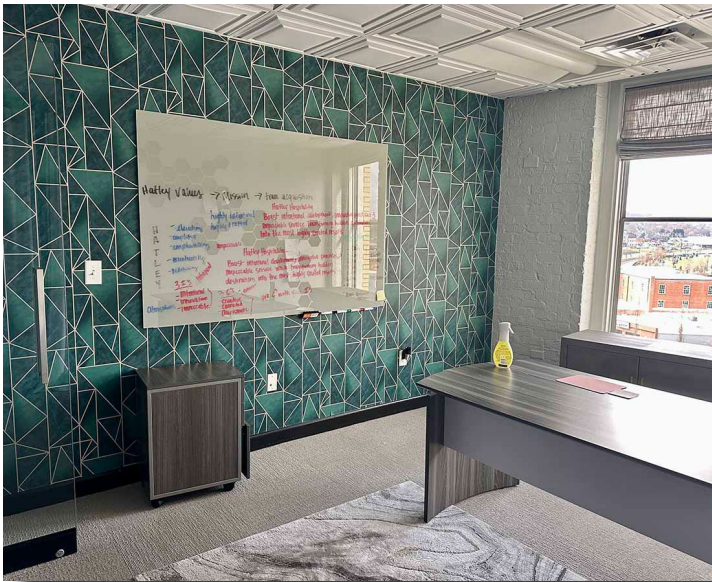
Broker

shannon@mitchcox.com

📞 423-282-6582 | 📠 423-282-5903
www.mitchcox.com







MITCH COX
REALTOR, INC.

2304 Silverdale Drive, Suite 200, Johnson City, TN 37601
423-282-6582 (o) 423-282-5903 (f) www.mitchcox.com