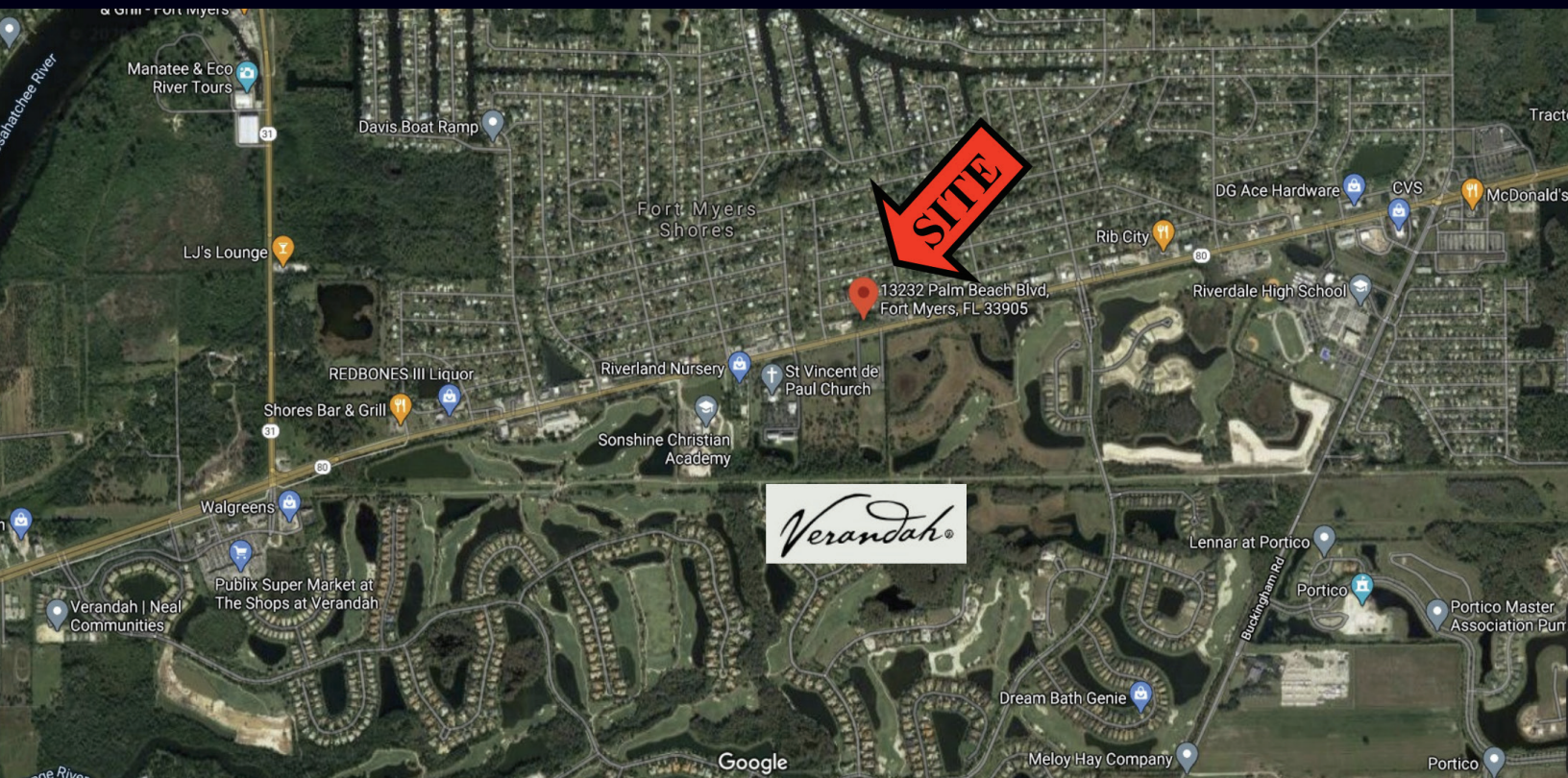


# .69+/- ACRE COMMERCIAL PARCEL

13232 Palm Beach Blvd

FORT MYERS, FL 33905



## FOR SALE: \$759,000

### ABOUT THE PROPERTY

Highly visible infill parcel with 250 feet of frontage on State Road 80 (Palm Beach Blvd). Located midway between SR 31 and Buckingham Road. 15 minutes from downtown Ft. Myers. .4 miles to I-75 exit 141. Multi directional center lane access from SR 80. Planned access driveway to SR 80 also.

### PROPERTY FEATURES

- Lot Size: .69 acres+/- | 250 x 120 | 30,000 sqft
- Traffic Count: 43,000 AADT
- Zoning: C1 - Commercial (Lee County)
- Utilities: Water and sewer
- Property Taxes \$1,896 (2024)
- STRAP#: 29-43-26-03-00037.070



Retail • Office • Auto Parts/Service  
Business Services • Medical Office  
Vehicle Sales • Restaurant • and more

**JIM BOBACK, CCIM**  
Broker

C 239-565-2616  
JB@BobackCommercialGroup.com  
www.BobackCommercialGroup.com





**C 239-565-2616**

**www.BobackCommercialGroup.com**

This document has been prepared by Boback Commercial Group for advertising and general information only. Boback Commercial Group makes no guarantees, representations or warranties of any kind, expressed or implied, regarding the information including, but not limited to, warranties of content, accuracy and reliability. Any interested party should undertake their own inquiries as to the accuracy of the information.