



FREESTANDING MEDICAL BUILDING
STEPS TO LAS OLAS BLVD.

LAS OLAS PLUG & PLAY MEDICAL BUILDING FOR LEASE

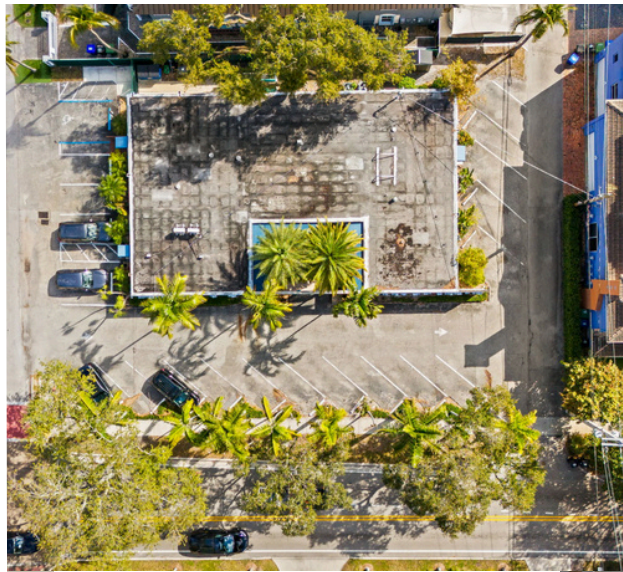


Las Olas Boulevard - Fort Lauderdale's premier shopping, dining, and entertainment corridor, connecting the city's downtown core to the beach. Known for its walkable streetscape, mix of upscale boutiques, restaurants, galleries, and offices, Las Olas offers exceptional visibility and foot traffic in one of South Florida's most iconic destinations.



SECOND GENERATION MEDICAL

Rare, Freestanding Medical Building with On-Site Parking only steps to Las Olas Blvd!



SECOND GENERATION MEDICAL

Rare, Freestanding Medical Building with On-Site Parking only steps to Las Olas Blvd!



SECOND GENERATION MEDICAL

New Exterior and Landscaping Coming Soon in 2026!



OVERVIEW



Address	100 SE 15 th Avenue, Fort Lauderdale, Florida 33301
Building Size	1,700 - 4,152 Square Feet
Lot Size	13,500 Square Feet
Parking	20 On-Site Parking Spaces + Street Parking
Pricing	\$55/SF NNN (Est. \$10/SF)

DATA ROOM

Zoning	RM-15. Click Here for Permitted Uses
BCPA	Click Here for Property Appraiser
Floor Plans	Click Here for Floor Plans
Photos	Click Here for Photos
LoopNet	Click Here for LoopNet Listing
LOI Template	Click Here for Landlord's Preferred Template



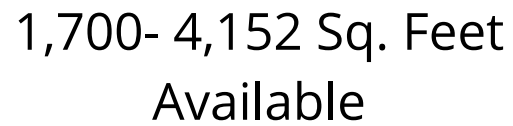












CONTACT

An aerial photograph of a residential neighborhood with many houses, trees, and a body of water in the background. A specific lot in the foreground is outlined in red.

KALEY TUNING

kt@nativerealty.com
(954) 871 - 8927

Native Realty Co. is a Licensed Real Estate Broker. This offering is subject to errors, omissions and change of price. As such no warranty or representation, expressed or implied, is made to the accuracy or completeness of the information contained herein. Any reliance on this information is solely at your own risk.