



2023 Chico Ave.

South El Monte, CA 91733

Lease Price/SF	\$1.50/monthly
Year Built	2008
Building Sq Ft	25,498 SF
Office SF	3,286 SF
Clear Height	24'-26'
GL Door 12'x16'	2
Interior Truck Well 12'x16'	2
Lot Sq Ft	44,866 SF
Parking Stalls	34
Gated Yard	



Investment Contacts

Paul Yang MBA, CCIM, CIPS

Broker

Cell: 909-569-2960

brokerpaulyang@hotmail.com

DRE#: 01705182 NLMS#: 325293

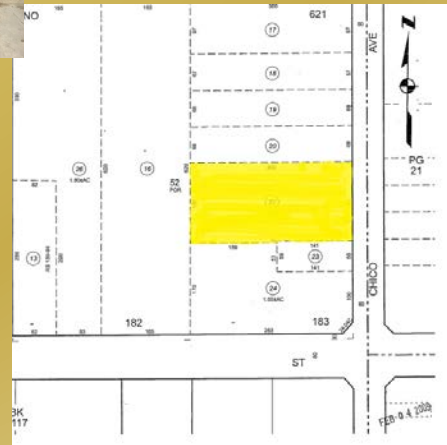
Helen Liu MBA

Senior Associate

Cell: 818-538-8880

helenliuagent@gmail.com

DRE#: 02071175



PYC Commercial office: 626-474-2288 | fax: 626-600-5452 | 17890 Castleton St, #378, City of Industry, CA 91748

All information furnished regarding property for sale, rental or financing is from sources deemed reliable, but no warranty or representation is made to the accuracy thereof and same is submitted to errors, omissions, change of price, rental or other conditions prior to sale, lease or financing or withdrawal without notice. No liability of any kind is to be imposed on the broker herein.