

Land For Sale ±7,540 SF

3317 S San Pedro Street
Los Angeles, CA 90011

For more information, please contact:

Daniel Park

(213) 446-0396

Danielpark777@hotmail.com

DRE# 01227056

PARK INDUSTRIAL

SPECIALIZING IN INDUSTRIAL REAL ESTATE SERVICES

Park Industrial Realty
800 McGarry St, 5th Floor
Los Angeles, CA 90021
Corporation DRE# 01983713

Property Information

- Approximately 7,540 square feet of commercial paved lot
- Major signalized corner – northwest corner of San Pedro St & Jefferson Blvd
- Close to Downtown LA Fashion District
- Excellent for potential development
- Currently occupied by a car dealership on a month to month basis at \$5,500 per month
- Located across the street from Superior Grocers Market
- 122 feet of frontage on San Pedro St
- M1 zoning
- Sale Price: \$1,350,000 (\$179.04/SF)

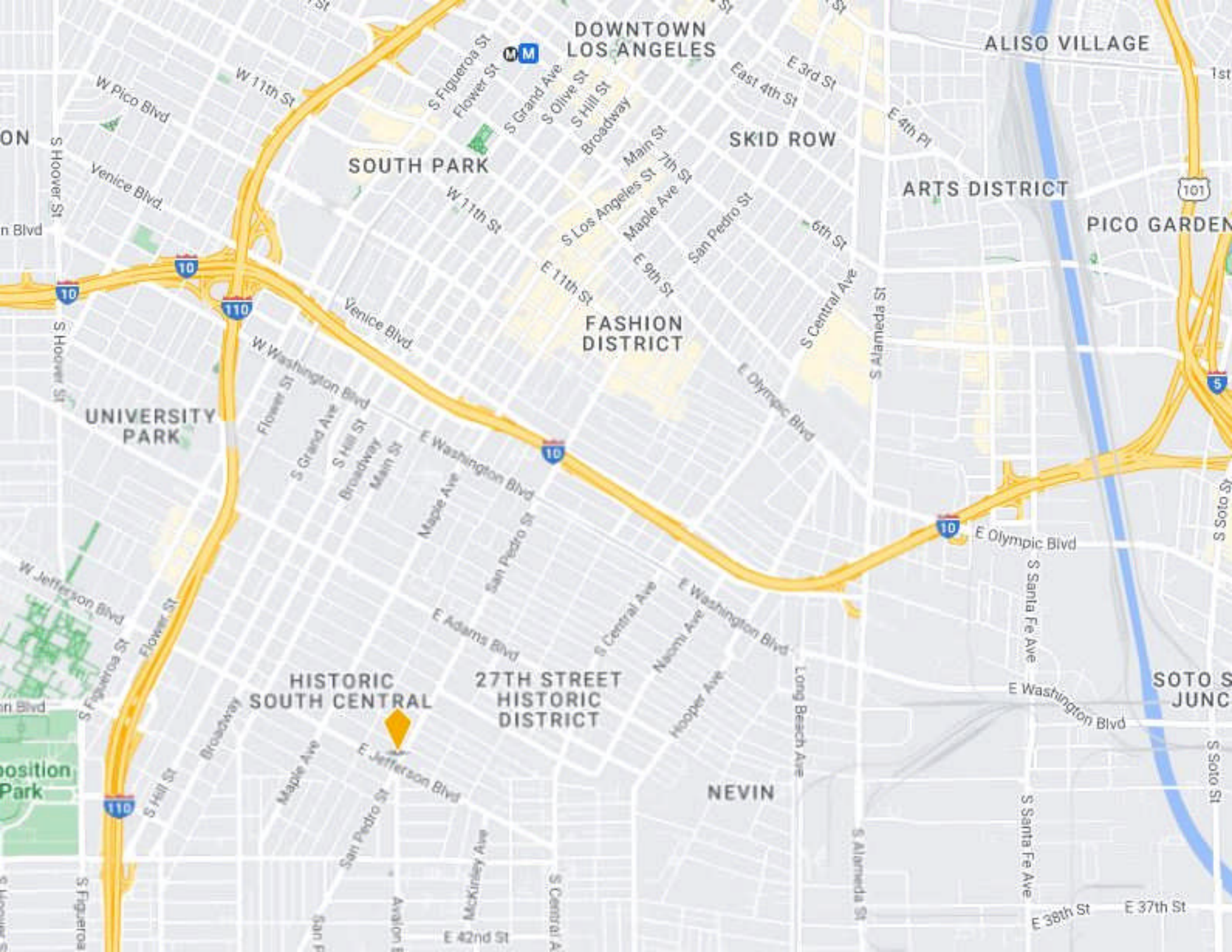
All information has been furnished from sources which we deem reliable, but for which we assume no liability. All measurements are approximate. Broker/Owner do not warrant its accuracy. Buyer/Lessee must verify all information.



MAPPING AND GIS SERVICES SCALE 1" = 60'

2014





DOWNTOWN
LOS ANGELES

ALISO VILLAGE

SOUTH PARK

SKID ROW

ARTS DISTRICT

PICO GARDEN

FASHION
DISTRICT

UNIVERSITY
PARK

HISTORIC
SOUTH CENTRAL

27TH STREET
HISTORIC
DISTRICT

NEVIN

SOTO S
JUNC

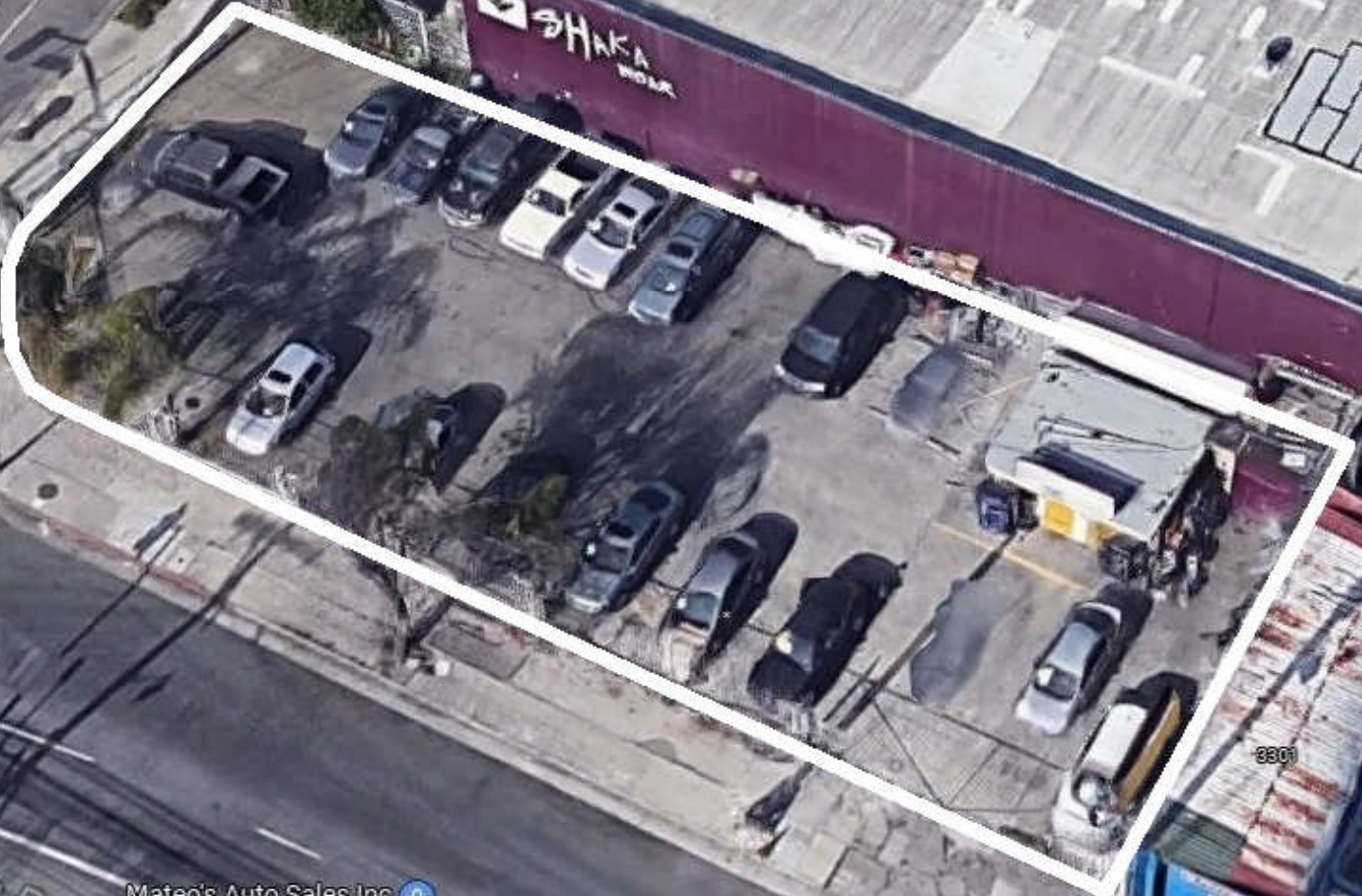
osition
Park



GMG Fashions
Temporarily closed

Eu Jefferson Blvd

SHAKA
WEAR



San Pedro St

Mateo's Auto Sales Inc
Car dealer