



Doctors' Urgent Care  
Has Moved to 848 State Route 28

935

# 935 BUSINESS STATE ROUTE 28

MILFORD, OH 45150

LEASE RATE: \$13.00 /SF NNN

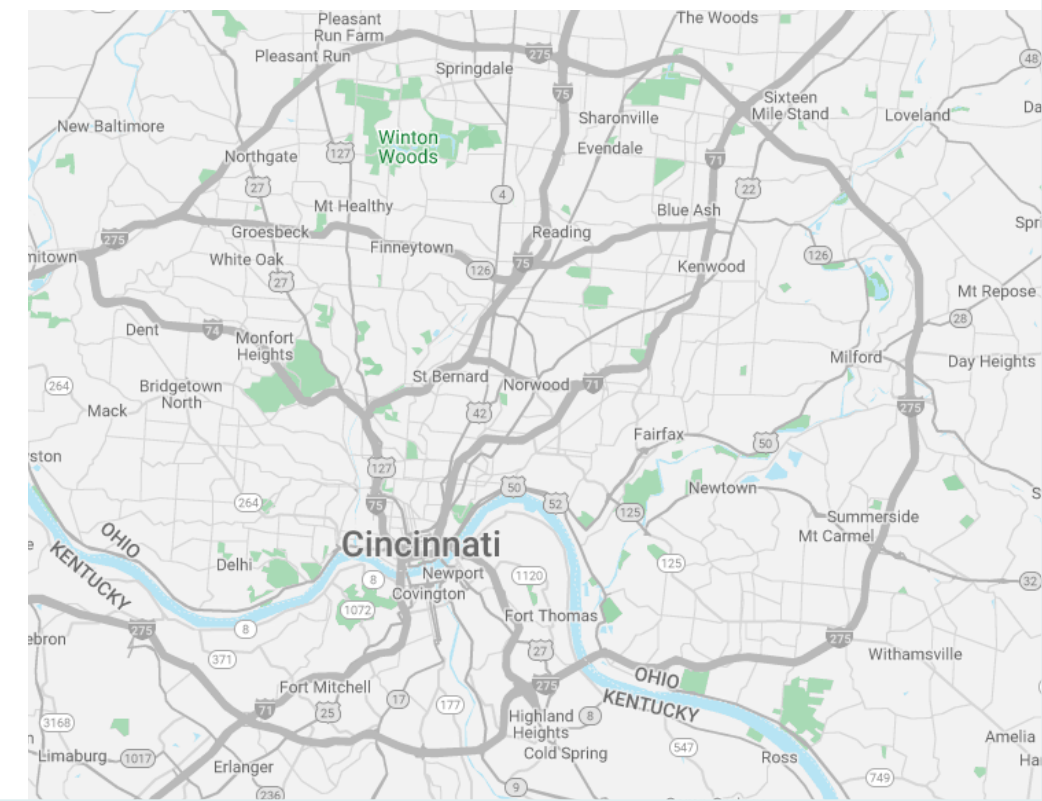


# HIGHLIGHTS

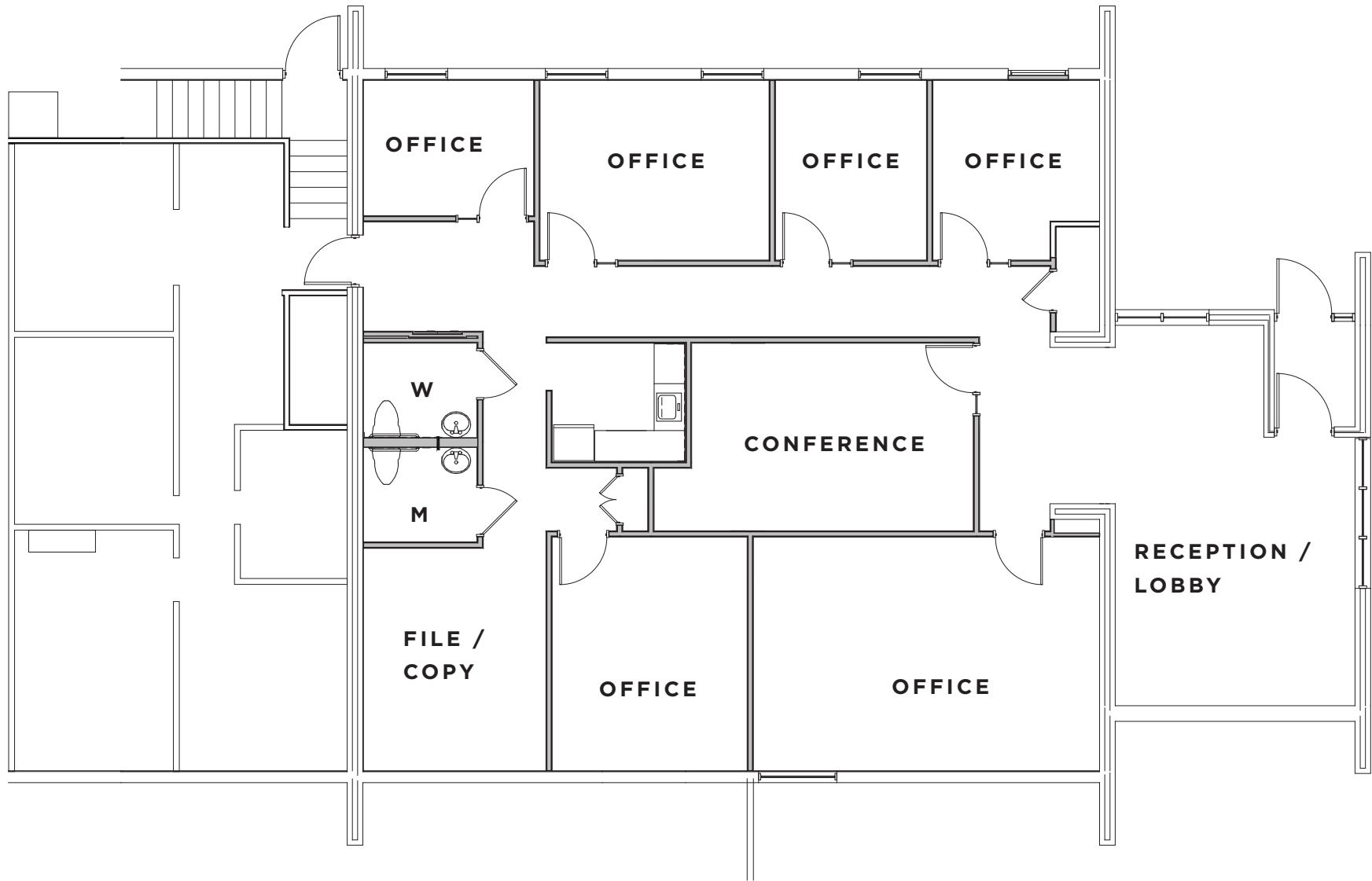
935 BUSINESS STATE ROUTE 28  
MILFORD, OH 45150

- 7,233 SF two-story brick office building on 1.35 acres
- 1,000 SF storage barn
- Former medical office
- Illuminated pylon sign on SR-28
- 40 parking spaces
- Excellent visibility and access to State Route 28 and less than 1 mile from I-275
- 17W backup generator
- Miami Township - 0% Earnings Tax
- B-1 Business Zoning

# LOCATION

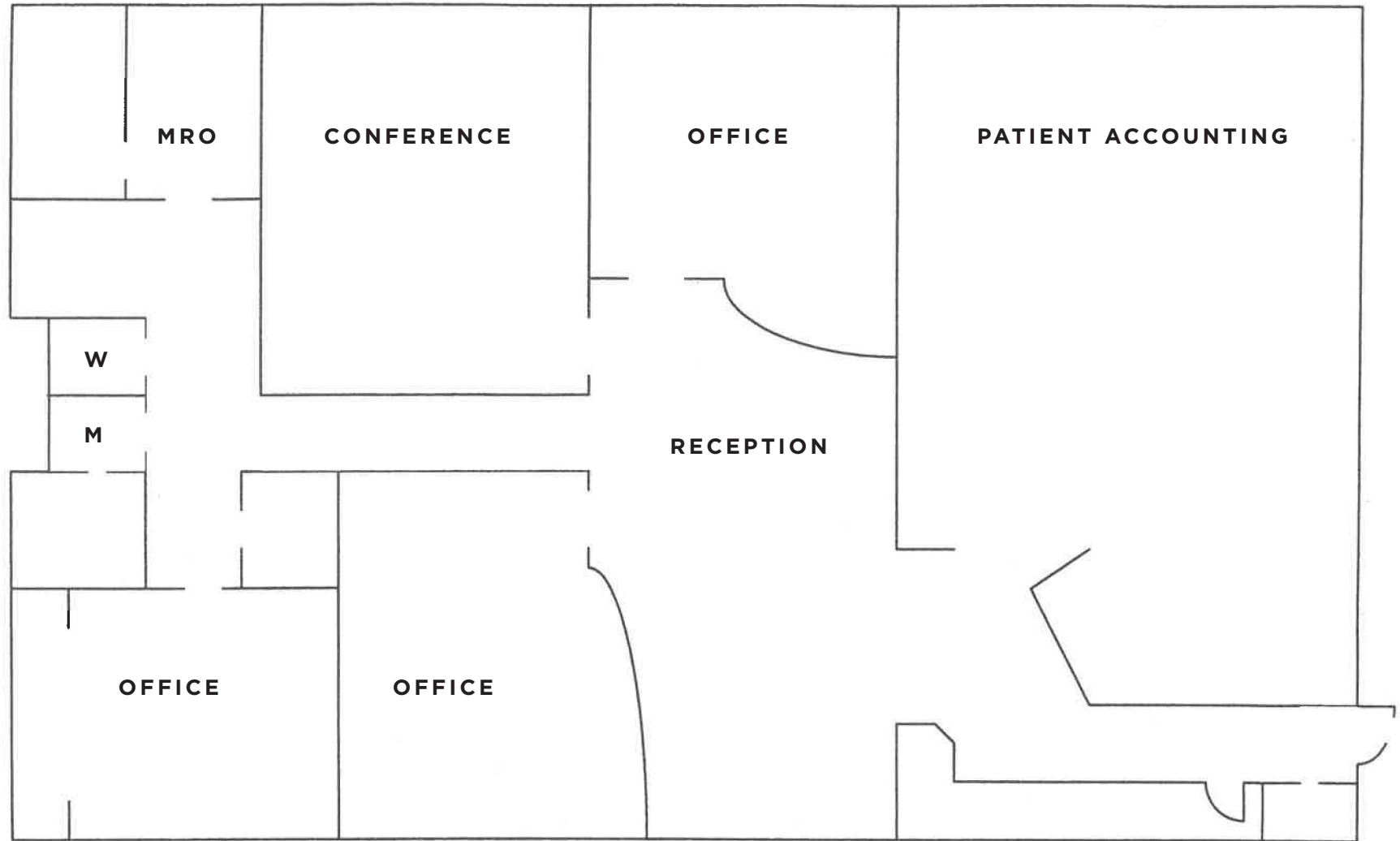


# FLOORPLAN



UPPER LEVEL

# FLOORPLAN



LOWER LEVEL





## SCOTT ABERNETHY, SIOR, CCIM

Senior Director  
scott.abernethy@cushwake.com  
+1 513 763 3013  
[Connect with Scott on LinkedIn](#)

## DIGGER DALEY

Senior Director  
digger.daley@cushwake.com  
+1 513 763 3028  
[Connect with Digger on LinkedIn](#)

Visit our website:  
[cincyofficeadvisors.com](http://cincyofficeadvisors.com)



©2024 Cushman & Wakefield. All rights reserved. The information contained in this communication is strictly confidential. This information has been obtained from sources believed to be reliable but has not been verified. NO WARRANTY OR REPRESENTATION, EXPRESS OR IMPLIED, IS MADE AS TO THE CONDITION OF THE PROPERTY (OR PROPERTIES) REFERENCED HEREIN OR AS TO THE ACCURACY OR COMPLETENESS OF THE INFORMATION CONTAINED HEREIN, AND SAME IS SUBMITTED SUBJECT TO ERRORS, OMISSIONS, CHANGE OF PRICE, RENTAL OR OTHER CONDITIONS, WITHDRAWAL WITHOUT NOTICE, AND TO ANY SPECIAL LISTING CONDITIONS IMPOSED BY THE PROPERTY OWNER(S). ANY PROJECTIONS, OPINIONS OR ESTIMATES ARE SUBJECT TO UNCERTAINTY AND DO NOT SIGNIFY CURRENT OR FUTURE PROPERTY PERFORMANCE.