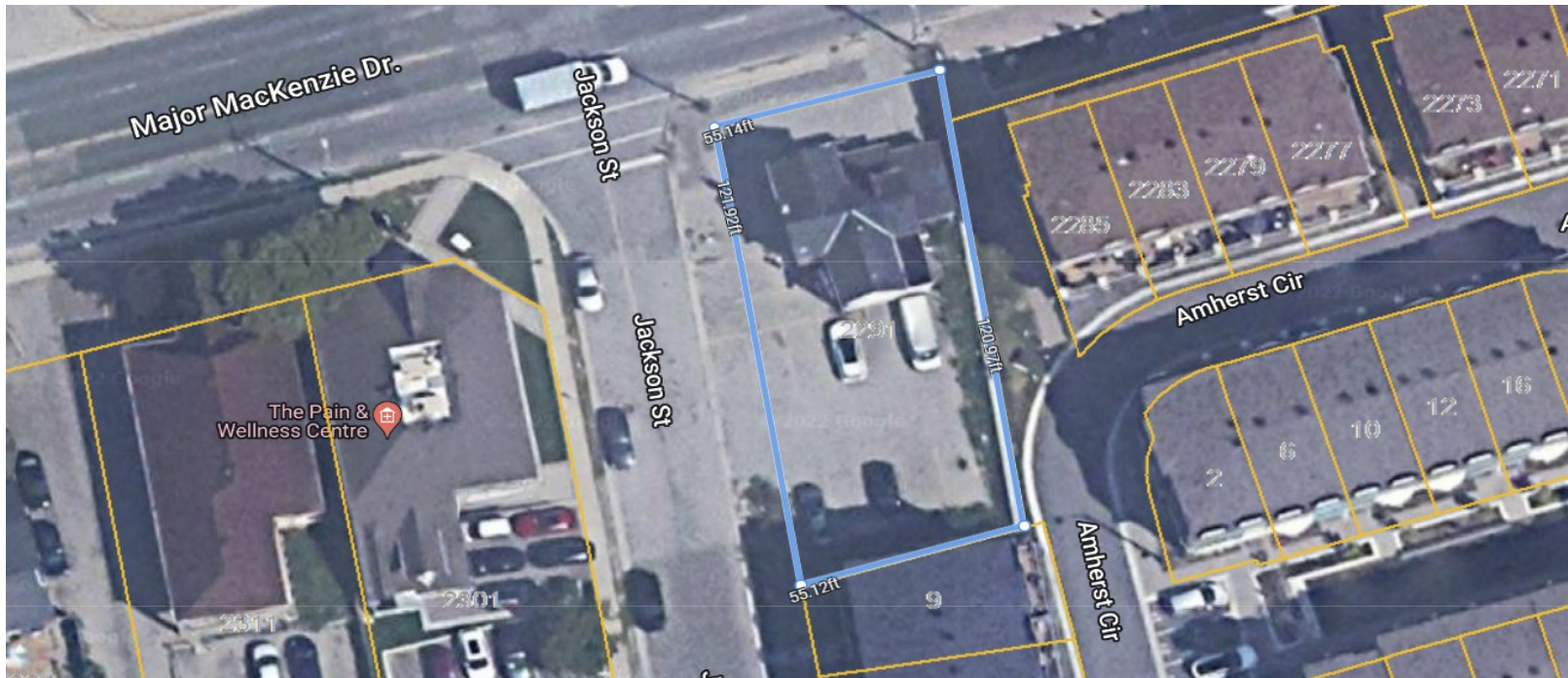


**FOR SALE**

**2291 MAJOR MACKENZIE DRIVE**

**SITE PLAN APPROVED RESIDENTIAL REDEVELOPMENT**



For Further information Please contact:

**Joe Tersigni**  
Broker of Record  
(416) 617-2021  
[itersigni@jdf-realty.com](mailto:itersigni@jdf-realty.com)

**Lara Tersigni, BA**  
Broker  
(416) 898-8786  
[ltersigni@jdf-realty.com](mailto:ltersigni@jdf-realty.com)



**JDF REALTY LTD 999 Edgeley Blvd., Suites 5 & 6 Vaughan, ON L4K 5Z4**

**[www.jdf-realty.com](http://www.jdf-realty.com)**

# 2291 Major Mackenzie Dr. Maple, ON

- ◆ Great Location in Maple at corner of Major Mackenzie Dr. & Jackson Street, One block west of Keele St.
- ◆ Site plan approved (subject to fulfilling Site Plan Agreement w/Municipality)
- ◆ Approved 3 new **FREEHOLD** town homes and redevelopment of existing heritage home
- ◆ Surrounded by residential & commercial/retail development
- ◆ Lot is approx. 55' x 121'
- ◆ Total Levies payable of approx.\$103,000.00 are frozen until June 1, 2023 (save for education levies )
- ◆ Parkland dedication charges and Levies applicable to 3 out of 4 homes
- ◆ Existing Municipal Road, Jackson St. provides direct access (no road to be built)
- ◆ Water & Sanitary available on Jackson St. Only laterals required
- ◆ **Asking Price: \$2,100,000.00 (not inclusive of levies & other charges as per the Site Plan Agreement)**
- ◆ **For due diligence material please email:**
- ◆ **[lara@jdf-realty.com](mailto:lara@jdf-realty.com)**





# 2291 Major Mackenzie Dr. Maple, ON

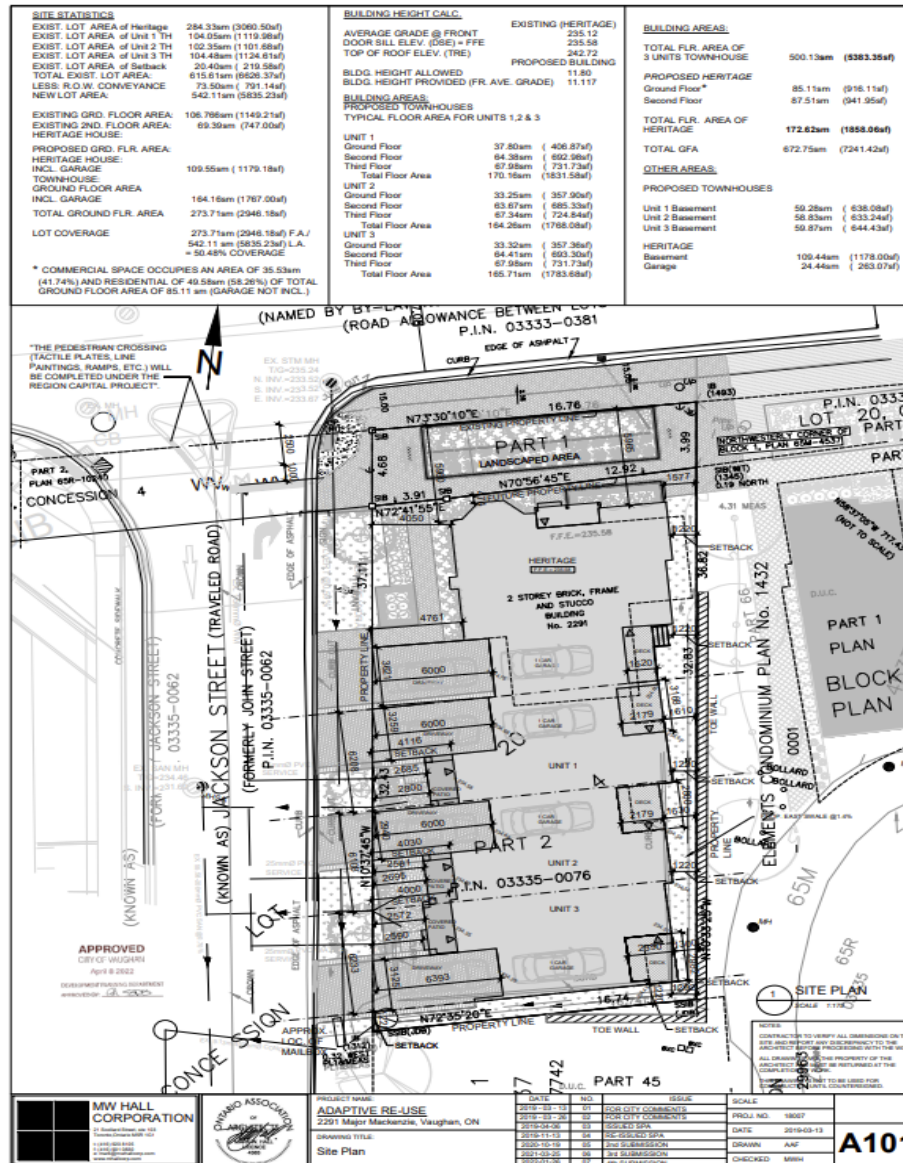
## Subject Site Aerial



Statements and information contained herein are based upon the information furnished by the principals and sources which we deem reliable—for which we can assume no responsibility, but which we believe to be correct. This submission is made subject to prior consummation, change in price or terms, errors, omissions, or withdrawal from the market without notice.

# 2291 Major Mackenzie Dr. Maple, ON

## Subject Site





# 2291 Major Mackenzie Dr. Maple, ON

## Proposed Elevations

