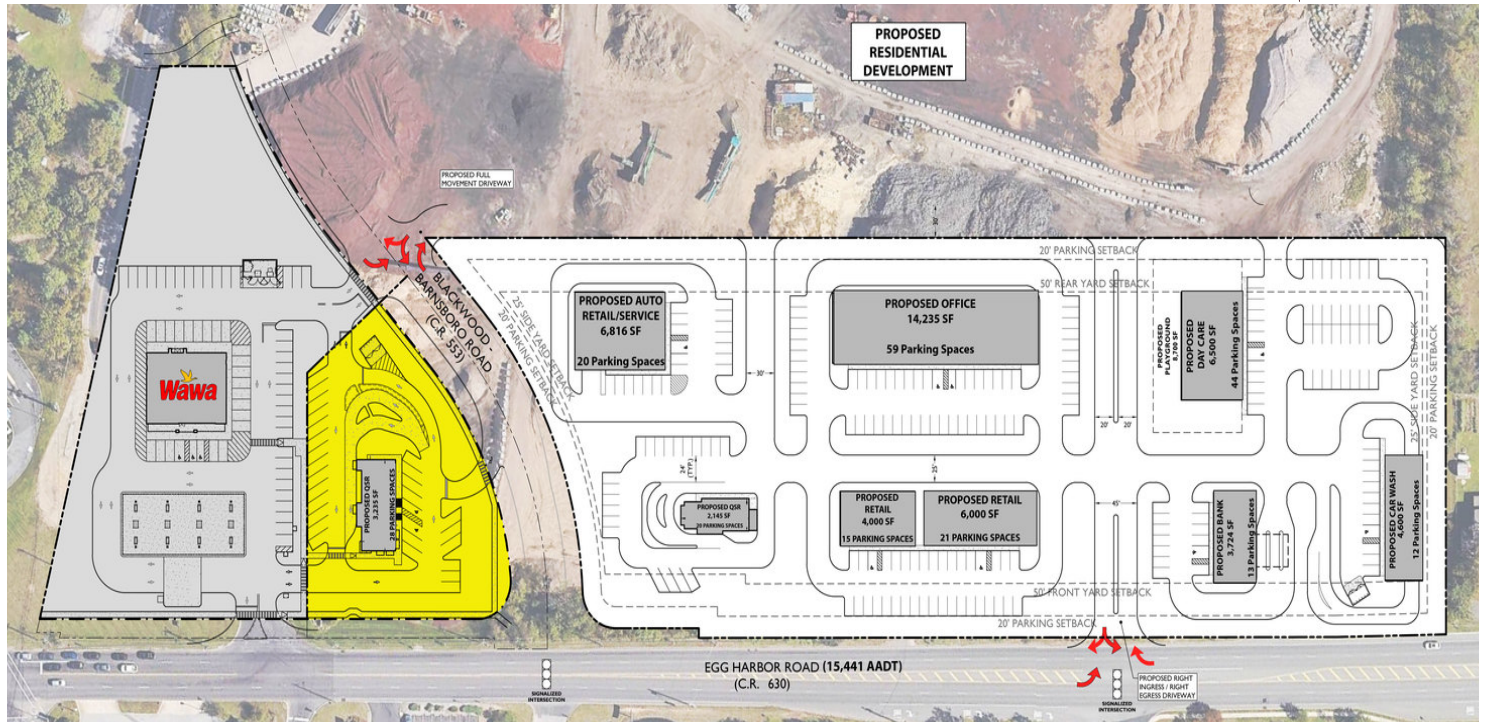


QSR Development at 5 Points Intersection

Blackwood Barnsboro Rd & Egg Harbor Rd, Washington Twp, (Gloucester County), NJ 08080



OFFERING SUMMARY

Available SF:	3,235 SF
Lease Rate/Sale Price:	Available Upon Request
Lot Size:	1.1 Acres

DEMOGRAPHICS

	1 MILE	3 MILES	5 MILES
Population	4,288	48,168	175,219
Average HHI	\$118,300	\$109,464	\$99,132
Employees	1,955	21,525	71,269
Total Businesses	192	2,031	7,056

LOCATION OVERVIEW

Located at N.W corner of signalized intersection of Barnsboro Blackwood and Egg Harbor Roads. Just off the Delsea Drive Automotive corridor and Exit 56A of Rt 55 (flowing north to Philadelphia and south to the NJ shore points). Direct access to Washington Township, Glassboro, Mantua, Deptford and more. Only 18 Miles to Philadelphia, PA and minutes to Deptford Mall & Jefferson Washington Twp Hospital.

HIGHLIGHTS

- **Potential tax abatement for qualified users!**
- Build-able or build to suit QSR pad for lease or sale
- Next to new Wawa Convenience Store with gas
- Highly visible for retail, restaurant or medical/office users
- Be part of the newest growth area in Washington Township
- Traffic Count: Egg Harbor Rd 15,441 AADT



ARROW

TCN
WORLDWIDE
REAL ESTATE SERVICES

Real Estate Services

Admin: 717 Limekiln Road, Doylestown, PA 18901
 HQ: 555 E. City Line Ave, Bala Cynwyd, PA 19004
 610.400.3018 | ArrowRealEstateServices.com

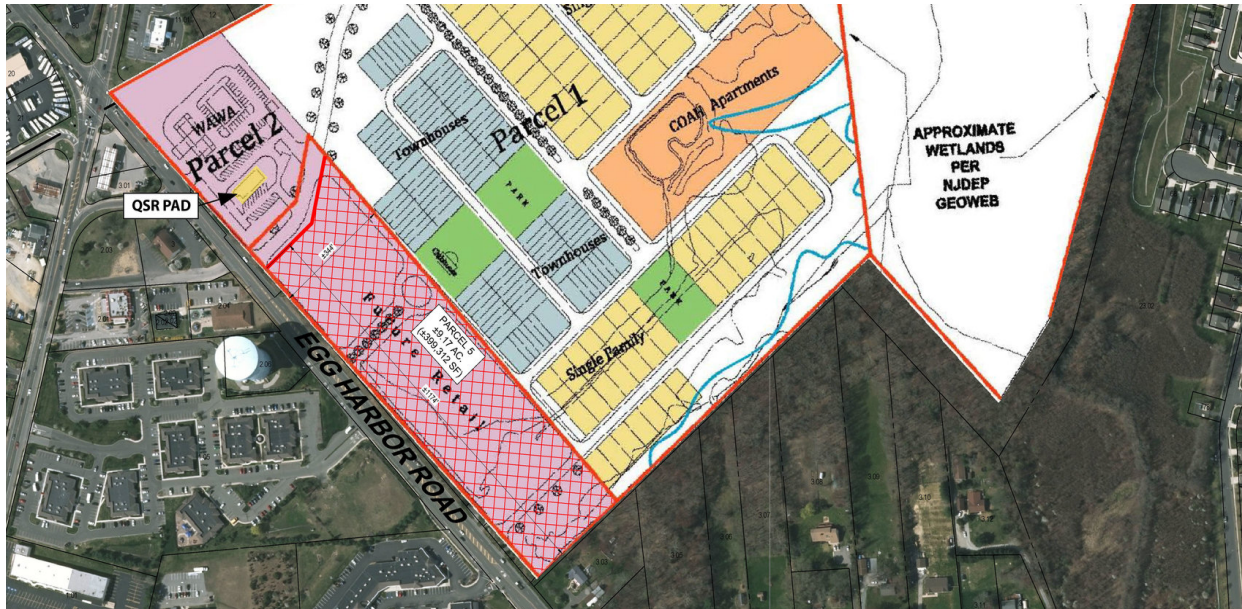
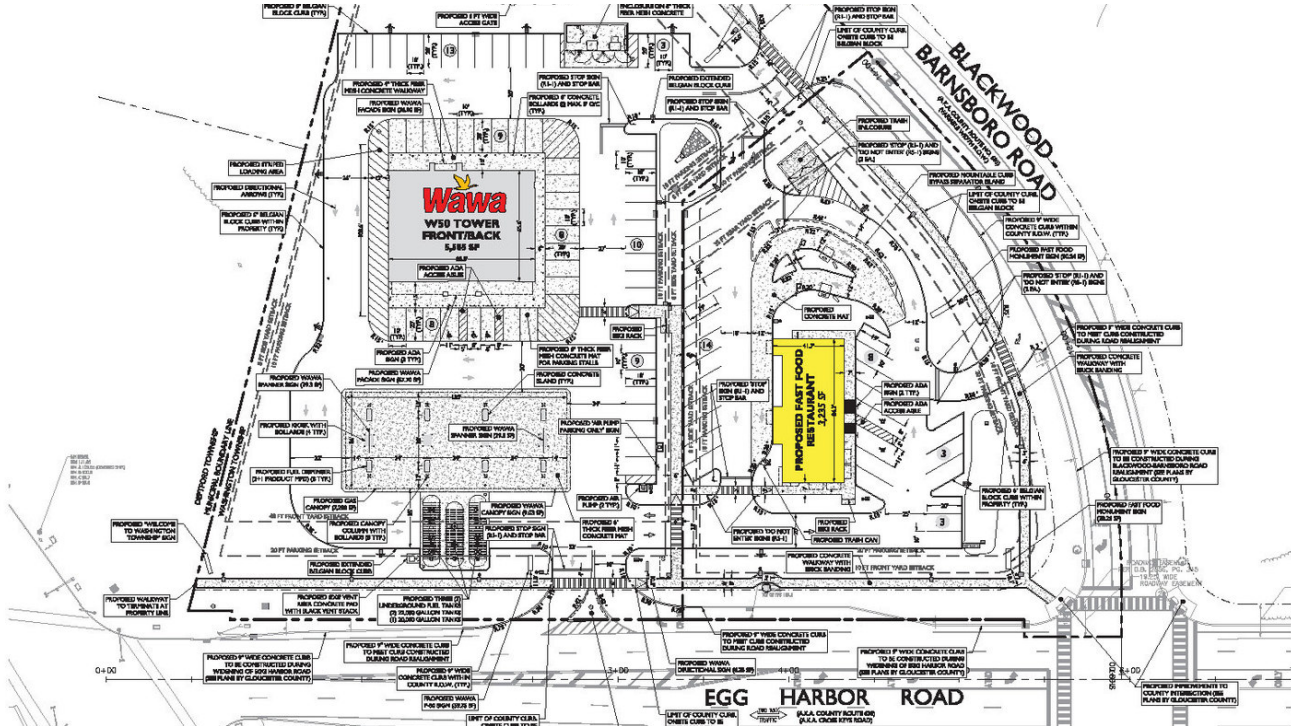
TAMMY RATTACASA **RUSS MENK**

856.392.3735 609.471.7893

TammyR@arrowcre.com RussM@arrowcre.com

QSR Development at 5 Points Intersection

Blackwood Barnsboro Rd & Egg Harbor Rd, Washington Twp, (Gloucester County), NJ 08080



ARROW

TCN
WORLDWIDE
REAL ESTATE SERVICES

Real Estate Services
Admin: 717 Limekiln Road, Doylestown, PA 18901
HQ: 555 E. City Line Ave, Bala Cynwyd, PA 19004
610.400.3018 | ArrowRealEstateServices.com

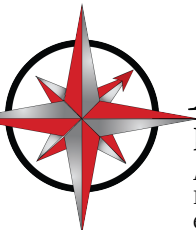
TAMMY RATTACASA **RUSS MENK**
856.392.3735 609.471.7893
TammyR@arrowcre.com RussM@arrowcre.com

QSR Development at 5 Points Intersection

Blackwood Barnsboro Rd & Egg Harbor Rd, Washington Twp, (Gloucester County), NJ 08080



Map data ©2020 Imagery ©2020 , CNES / Airbus, Landsat / Copernicus, Maxar Technologies, U.S. Geological Survey, USDA Farm Service Agency



ARROW

Real Estate Services

Admin: 717 Limekiln Road, Doylestown, PA 18901
HQ: 555 E. City Line Ave, Bala Cynwyd, PA 19004
610.400.3018 | ArrowRealEstateServices.com



TAMMY RATTACASA **RUSS MENK**

856.392.3735 609.471.7893

TammyR@arrowcre.com RussM@arrowcre.com