

*ALL PROPERTY LINES ARE ROUGH ESTIMATIONS
AND NOT SURVEY ACCURATE

PARCEL
"A"

PARCEL
"B"

FOR SALE

REGION

COMMERCIAL REAL ESTATE

INTERSTATE PARCELA WEST SPRINGFIELD, MA

Region Commercial is pleased to offer, on an exclusive basis, Interstate Parcel A, a ± 6.58 -acre parcel available for sale.

The land is ideally located at the crossroads of Interstate I-90 and I-91, offering accessibility and visibility. This location provides easy regional connectivity and convenient transportation access. Its strategic position enhances development potential and long-term value.

The parcel offers flexible development potential in a well-positioned location, suitable for a range of uses. Built-to-suit opportunities are available.

PRICE **\$200,000/AC**

ZONING INDUSTRIAL PARK

ACRES ± 6.58 ACRES

TOPOGRAPHY SLOPED TERRAIN

ELECTRIC/GAS EVERSOURCE ENERGY

WATER/SEWER MUNICIPAL

CONTACT

MITCH BOLOTIN

P: 413-415-1200 C: 413-537-2020
E: MITCH@REGIONCO.COM
LIC (MA): 134459
REGION CO LLC

BEN BOLOTIN

P: 413-415-1200 C: 413-530-3215
E: BEN@REGIONCO.COM
LIC (MA): 9582125
REGION CO LLC



REGION

COMMERCIAL REAL ESTATE

THE INFORMATION CONTAINED HEREIN HAS NOT BEEN VERIFIED AND IS FROM THIRD PARTY SOURCES. ALL INDIVIDUALS CONSIDERING THE SUBJECT PARTY MUST CONDUCT THEIR OWN ANALYSIS AND DETERMINE THE ACCURACY OF THE INFORMATION PROVIDED.

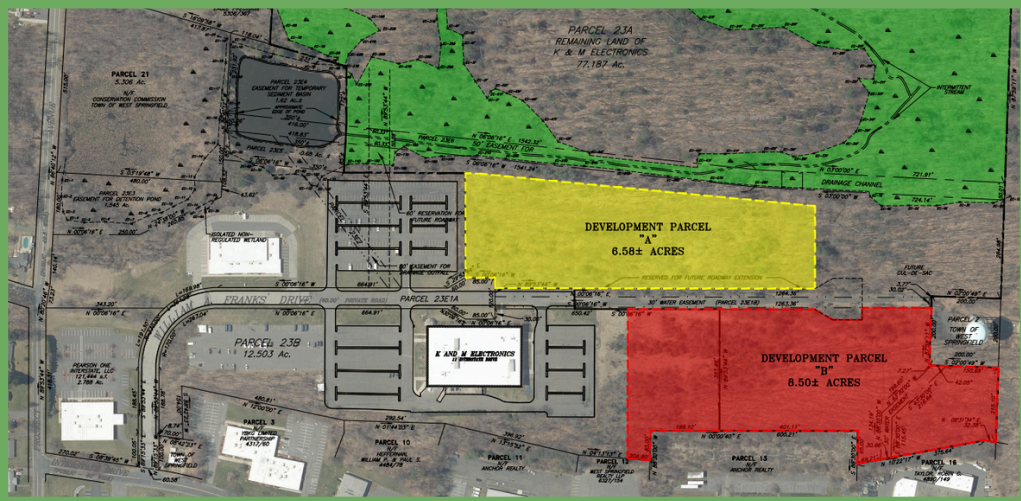
CONTACT

MITCH BOLOTIN

P: 413-415-1200 C: 413-537-2020
E: MITCH@REGIONCO.COM
LIC (MA): 134459
REGION CO LLC

BEN BOLOTIN

P: 413-415-1200 C: 413-530-3215
E: BEN@REGIONCO.COM
LIC (MA): 9582125
REGION CO LLC



REGION

COMMERCIAL REAL ESTATE

THE INFORMATION CONTAINED HEREIN HAS NOT BEEN VERIFIED AND IS FROM THIRD PARTY SOURCES. ALL INDIVIDUALS CONSIDERING THE SUBJECT PARTY MUST CONDUCT THEIR OWN ANALYSIS AND DETERMINE THE ACCURACY OF THE INFORMATION PROVIDED.

CONTACT

MITCH BOLOTIN

P: 413-415-1200 C: 413-537-2020
E: MITCH@REGIONCO.COM
LIC (MA): 134459
REGION CO LLC

BEN BOLOTIN

P: 413-415-1200 C: 413-530-3215
E: BEN@REGIONCO.COM
LIC (MA): 9582125
REGION CO LLC