

# Carmel View

6303 CARMEL ROAD  
CHARLOTTE, NC 28226

**TRINITY**  
**PARTNERS**

# Building Overview



**SURFACE PARKING**

**ACCESS TO BALLANTYNE AND I-485**

**MINUTES FROM CARMEL COMMONS SHOPPING CENTER**

**Chase Merkel**  
cmerkel@trinity-partners.com  
704.295.0449

**John Hannon**  
jhannon@trinity-partners.com  
704.813.7252

**TRINITY  
PARTNERS**

# Location

LOCATED IN THE HEART OF SOUTH CHARLOTTE,  
LESS THAN TWO MILES FROM I-485.



**Chase Merkel**  
 cmerkel@trinity-partners.com  
 704.295.0449

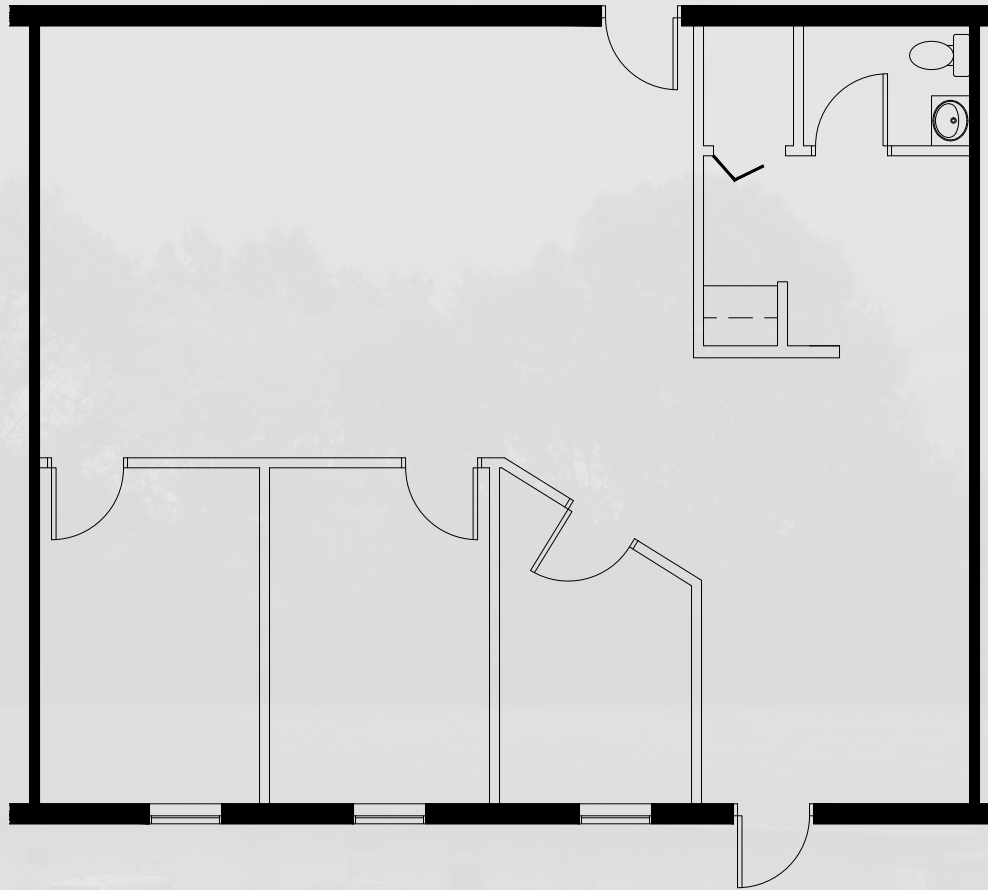
**John Hannon**  
 jhannon@trinity-partners.com  
 704.813.7252



# Availability

---

SUITE 105 | 1,335 RSF



**Chase Merkel**  
cmerkel@trinity-partners.com  
704.295.0449

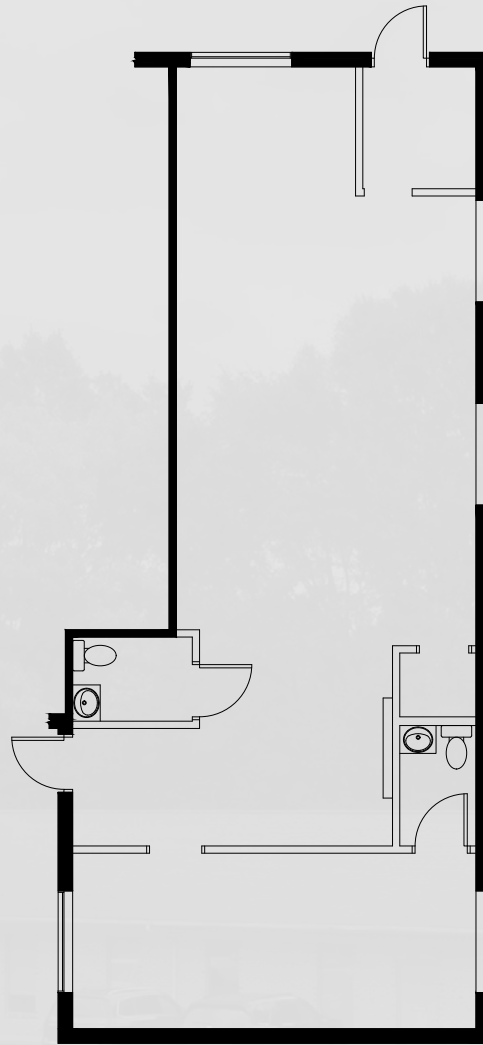
**John Hannon**  
jhannon@trinity-partners.com  
704.813.7252



# Availability

---

SUITE 107 | 1,184 RSF



**Chase Merkel**  
cmerkel@trinity-partners.com  
704.295.0449

**John Hannon**  
jhannon@trinity-partners.com  
704.813.7252



# Contact

**Chase Merkel**

[cmerkel@trinity-partners.com](mailto:cmerkel@trinity-partners.com)

704.295.0449

**John Hannon**

[jhannon@trinity-partners.com](mailto:jhannon@trinity-partners.com)

704.813.7252

**TRINITY**  
**PARTNERS**