

RETAIL FOR LEASE ▾

507 Providence Road

Charlotte, NC 28207



PROPERTY DETAILS ▾



507 Providence Rd
Charlotte, NC 28206



Myers Park
Neighborhood



2,617 - 5,234 SF
Across 2 Levels



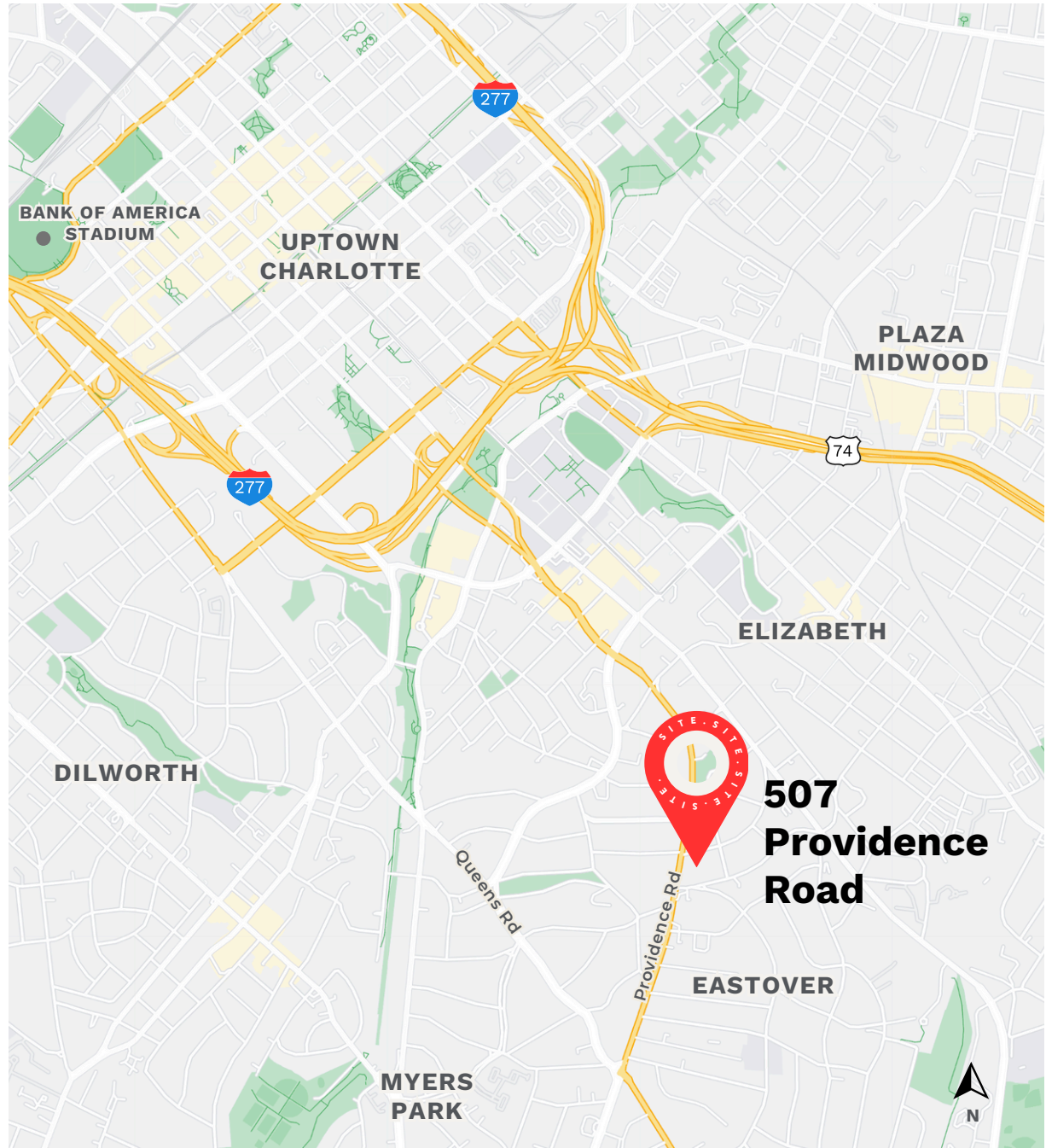
Freestanding Retail
Corner Building



A New Look
Facade Renovations



Planned Q3 2025 Delivery



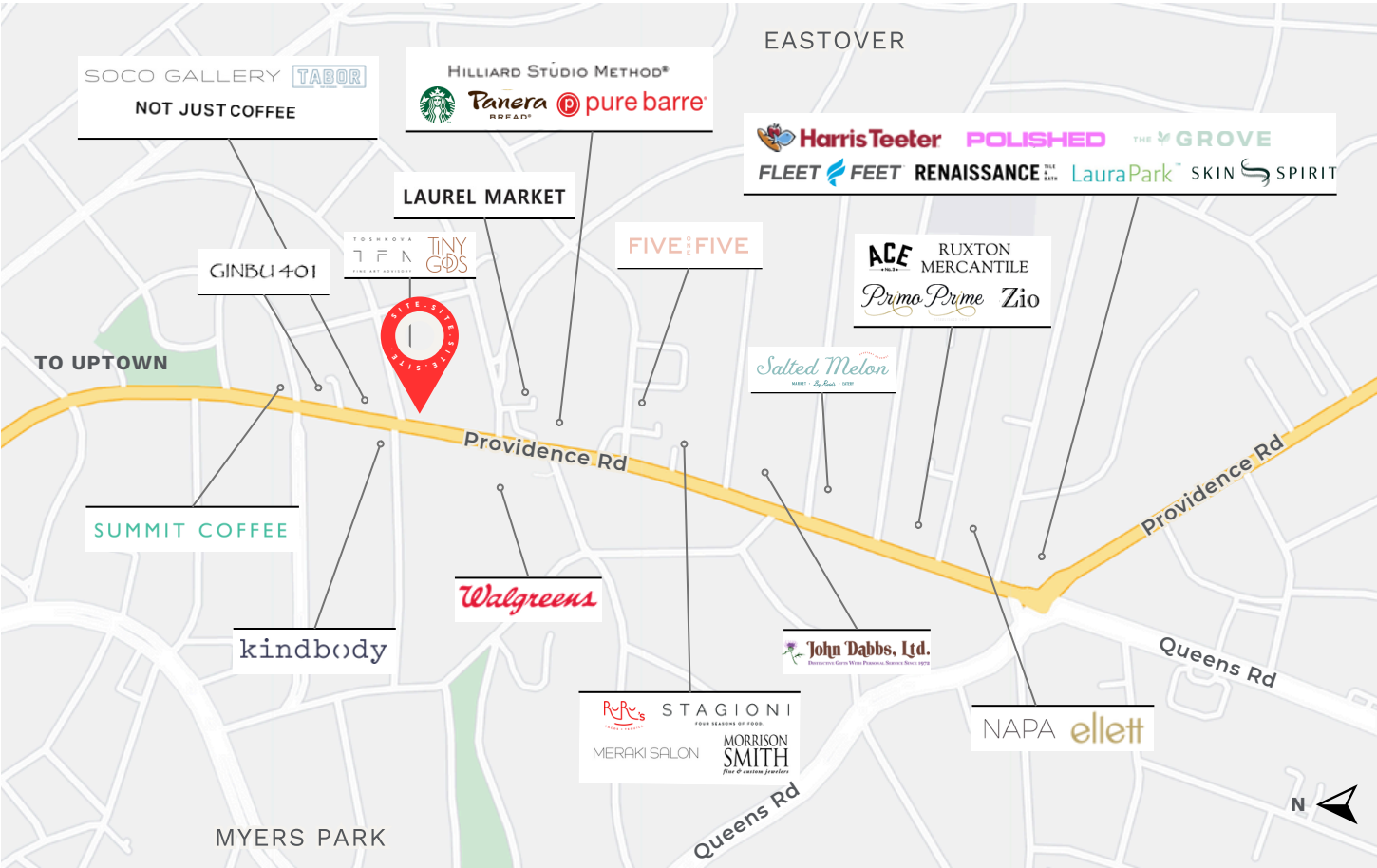
PROPERTY DETAILS

NEARBY RETAIL

SITE PLAN

FLOOR PLANS

ELEVATIONS



MYERS PARK/EASTOVER
Prime Location

Situated in between the prestigious Myers Park and Eastover neighborhoods, known for their charming tree-lined streets and affluent community.

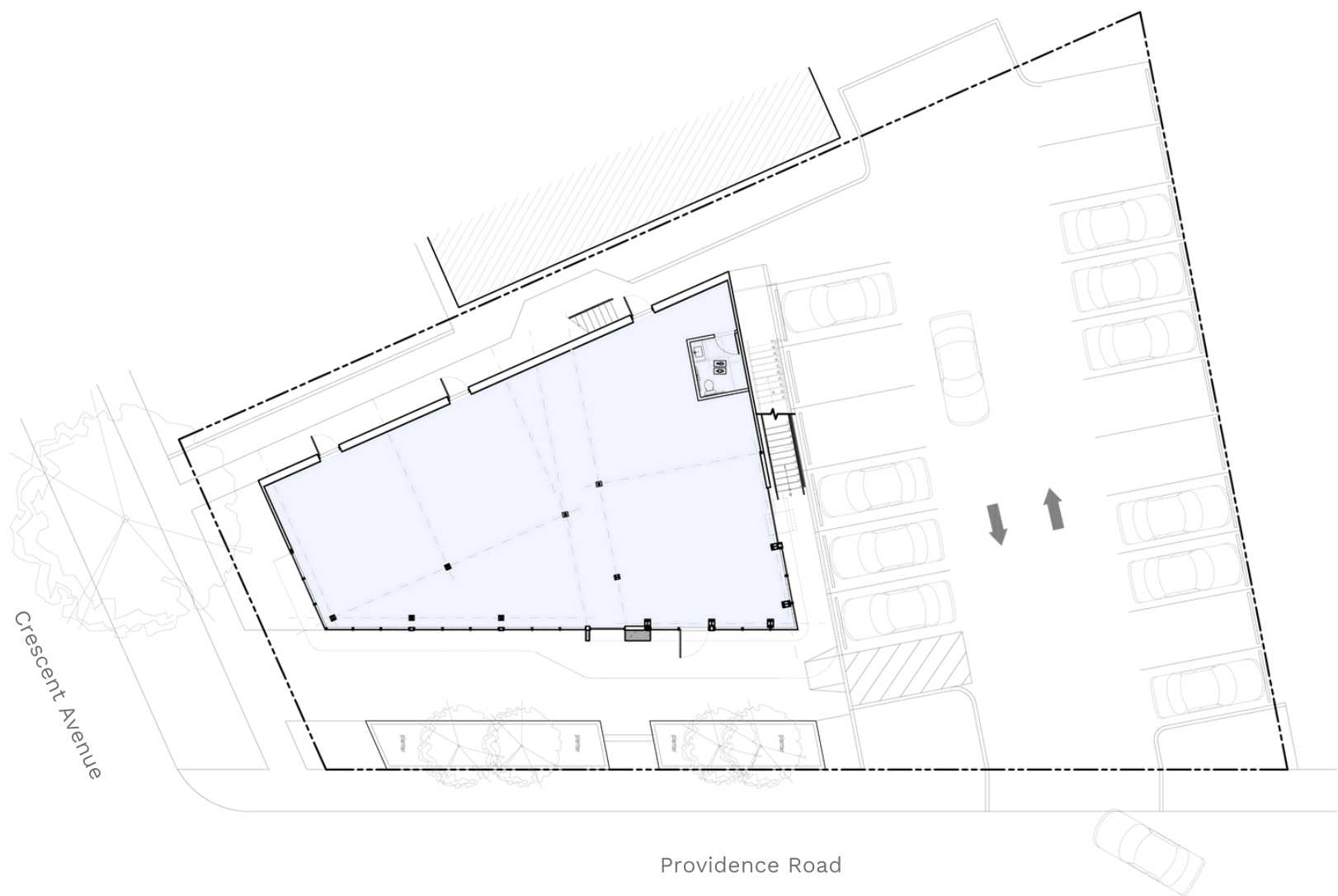


SHOPPING & DINING
Providence Road Corridor

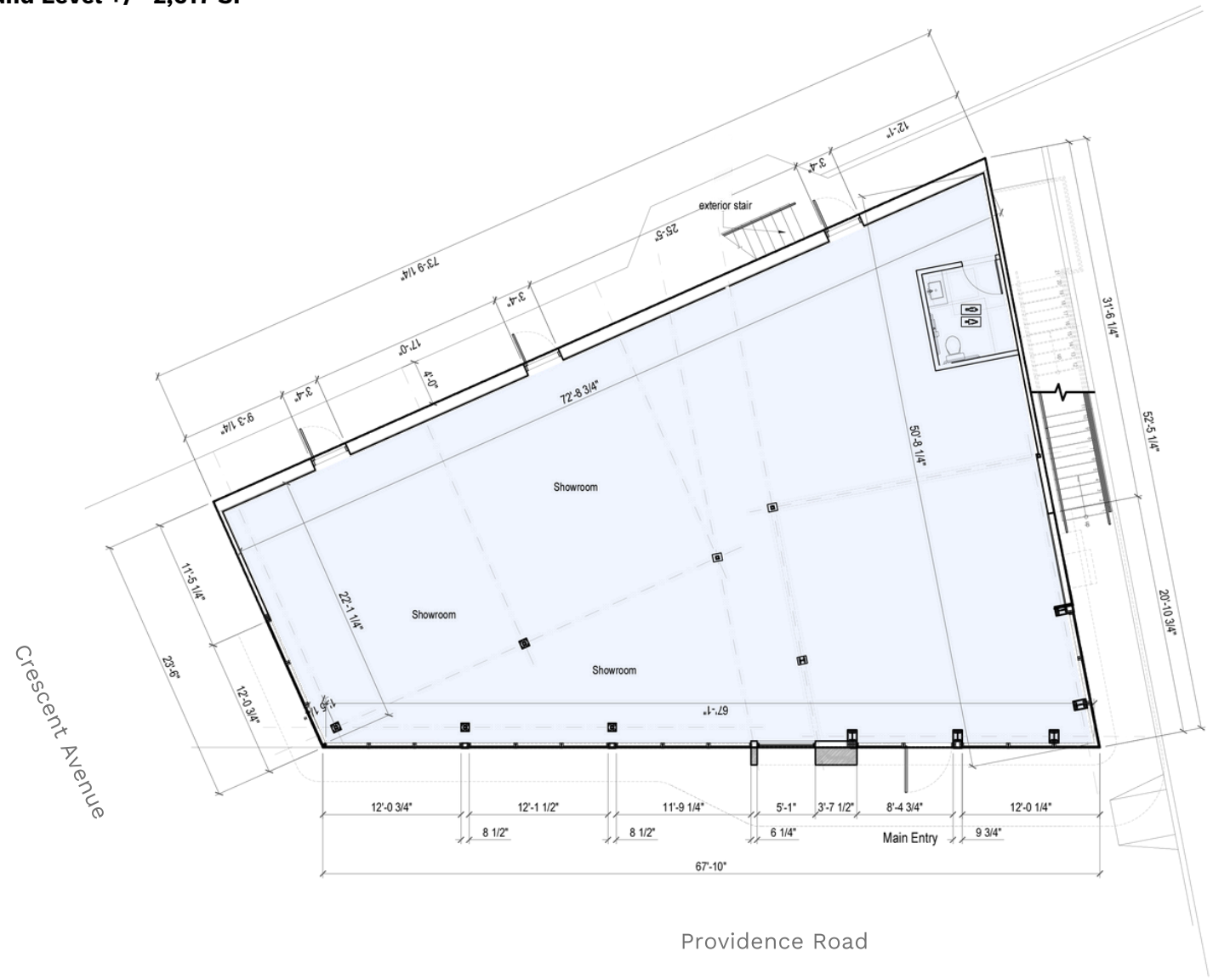
Surrounded by a vibrant mix of shops, restaurants, and cafes, this is an ideal spot for businesses looking to attract a steady flow of foot traffic.



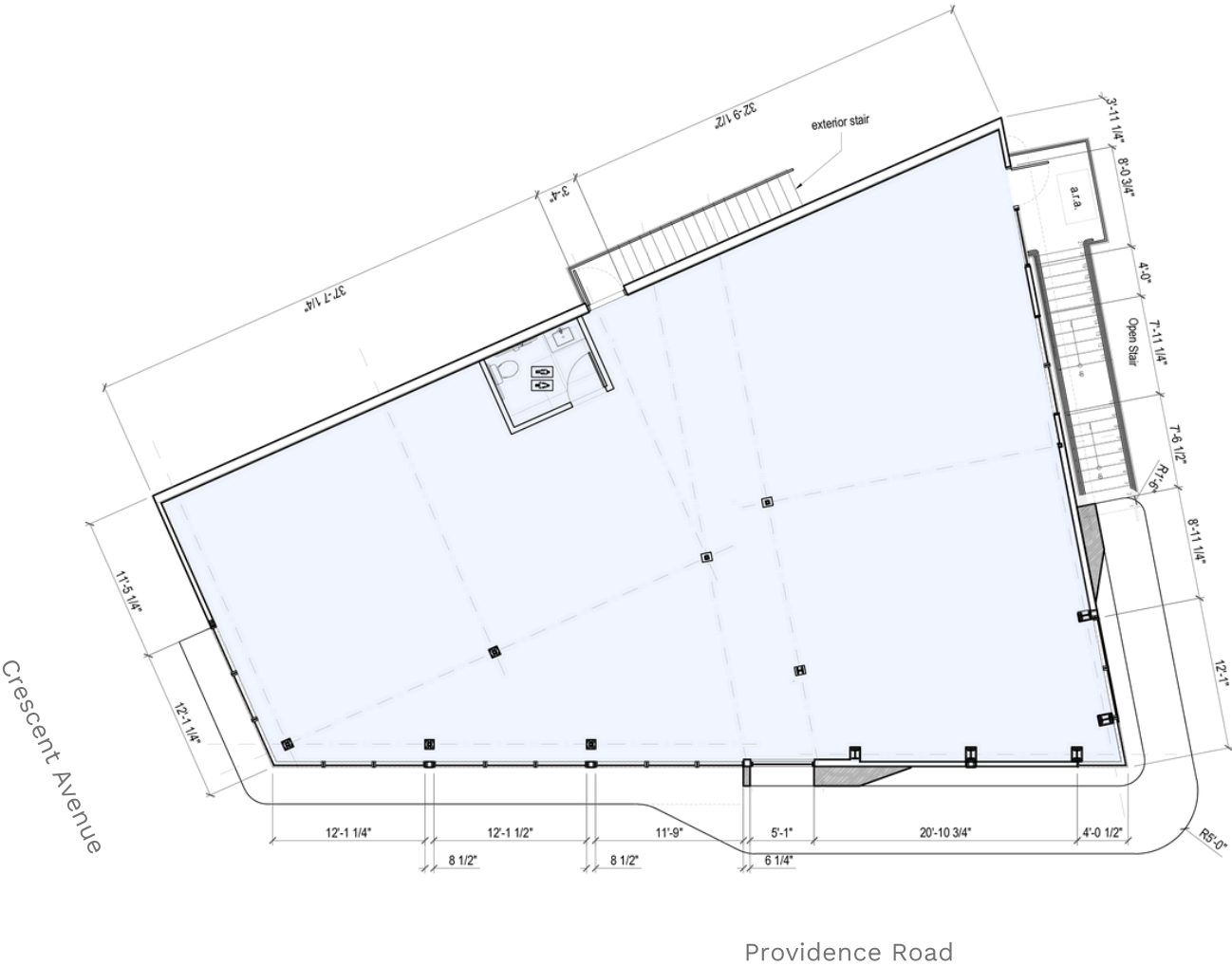
Overall



Ground Level +/- 2,617 SF

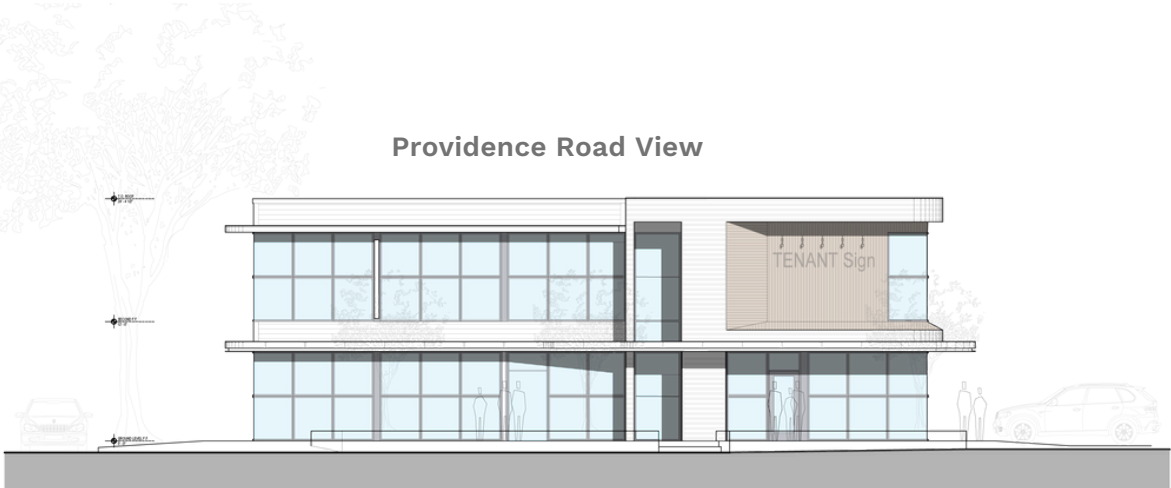


2nd Level +/- 2,617 SF

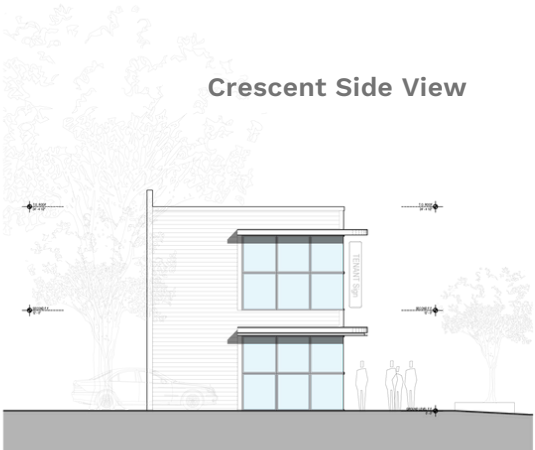




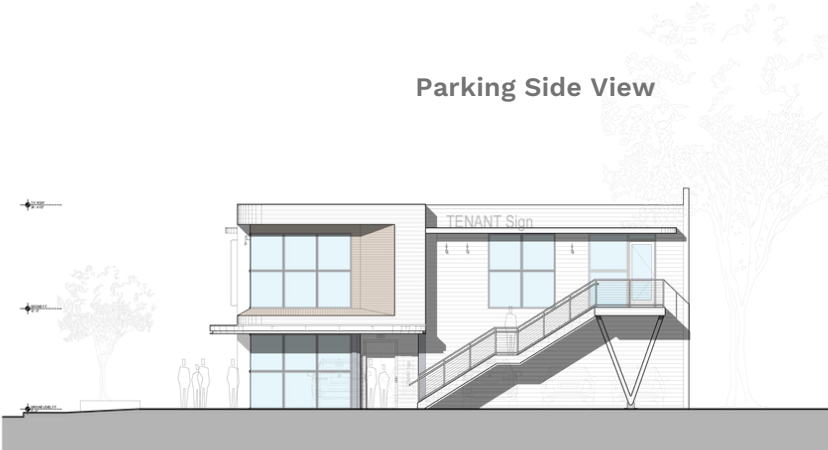
Providence Road View



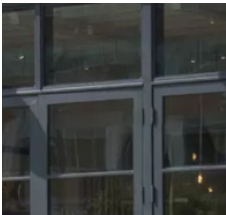
Crescent Side View



Parking Side View



Material Palette





507 Providence Rd

Charlotte, NC 28207



Charles Thrift

Charles@ThriftCRES.com

704-622-1795



PROPERTY DETAILS

NEARBY RETAIL

SITE PLAN

FLOOR PLANS

ELEVATIONS