



PROPERTY OVERVIEW

Located on Virginia Beach Boulevard in the Rose Hall historical district, Village Shoppes at Rose Hall is a neighborhood retail center ideal for prime office, services and retail shops.

- Frontage on Virginia Beach Boulevard, a major east/west artery, with close access to I-264
- B-2 Zoning
- **AVAILABLE: ±1,646 SF**

AREA MAP



DEMOGRAPHICS

Radius:	1 mile	3 mile	5 mile
Population:	13,300	95,213	240,993
Average HH Income:	\$78,112	\$84,302	\$87,424
Traffic Count:	±37,175 VPD		

FOR MORE INFORMATION, PLEASE CONTACT:

LENNY BURNS

(757) 490-3141

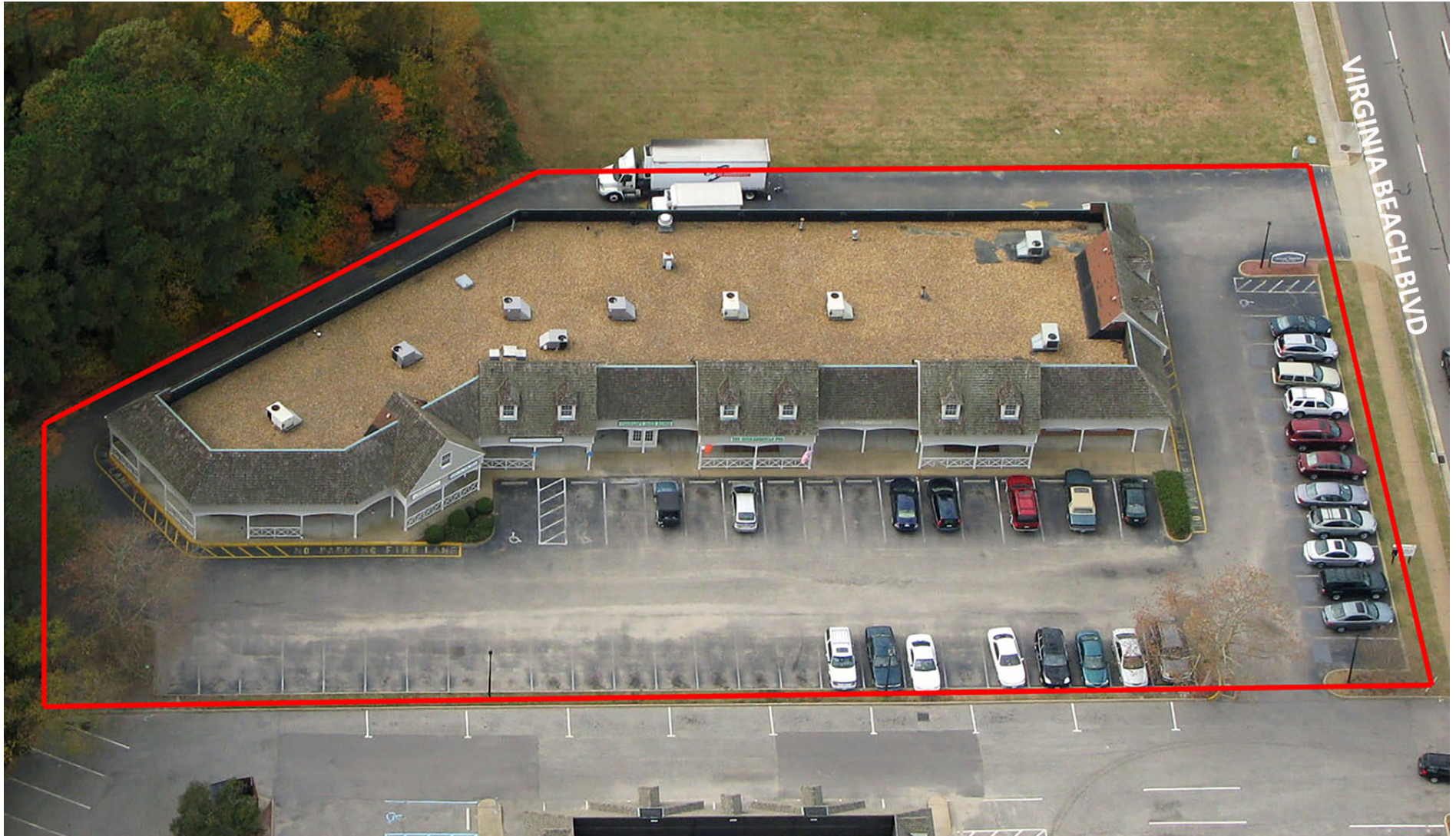
lburns@pembrokerealty.com

Pembroke Realty Group

4433 Corporation Lane, Suite 250

Virginia Beach, VA 23462

www.pembrokerealty.com

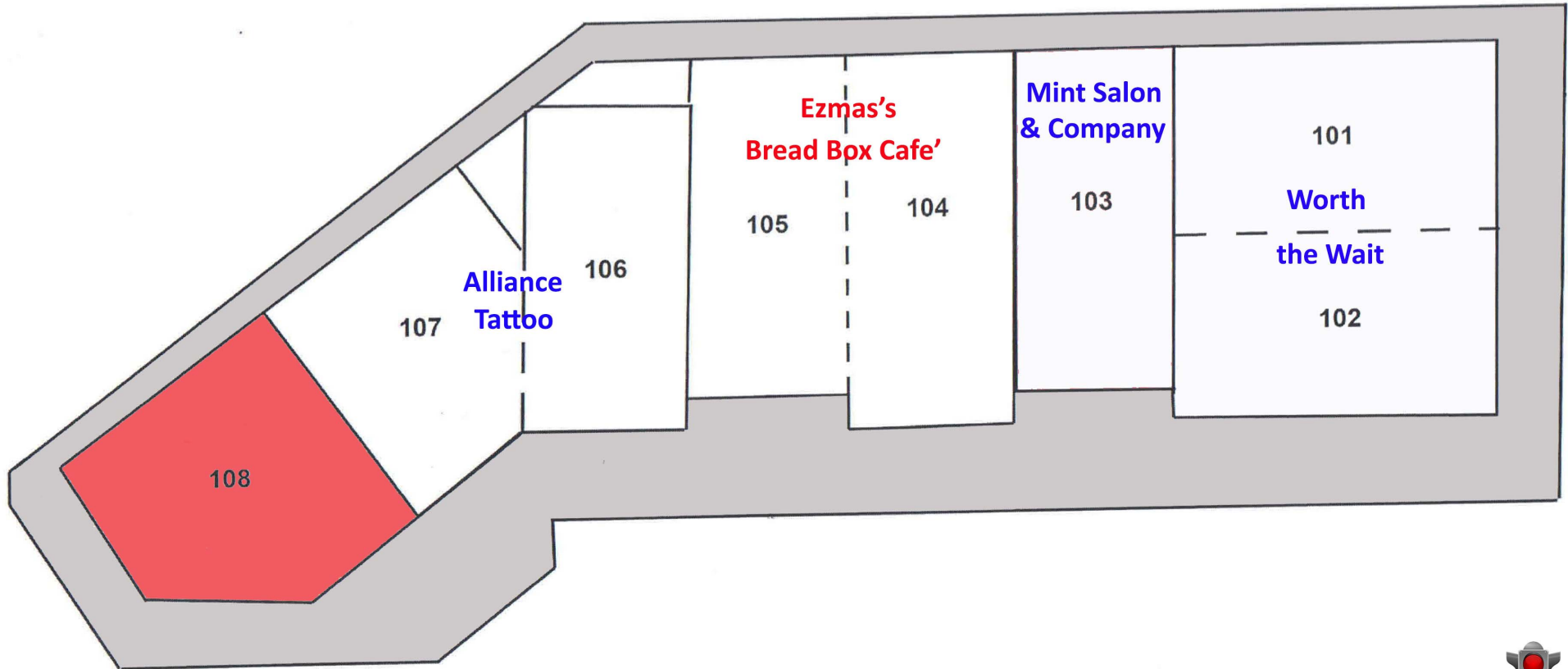


FOR MORE INFORMATION, PLEASE CONTACT:

LENNY BURNS
(757) 490-3141
lburns@pembrokerealty.com

Pembroke Realty Group
4433 Corporation Lane, Suite 250
Virginia Beach, VA 23462
www.pembrokerealty.com

VILLAGE SHOPPES AT ROSEHALL



FOR MORE INFORMATION, PLEASE CONTACT:

LENNY BURNS
(757) 490-3141
lburns@pembrokerealty.com

Pembroke Realty Group
4433 Corporation Lane, Suite 250
Virginia Beach, VA 23462
www.pembrokerealty.com