

For Lease | 9400 Reeds Road Overland Park, KS 66207

1st Floor Renovated Suite with Private Offices on Glass



\$20 PSF Full Service  
2,170 - 5,000 SF



1st Floor Shared Workspace + Common Area Restrooms, Conference Room & Kitchen  
Near Corner of 95th & Nall | Across from New Meadowbrook Development  
Bonus Warehouse Space Upon Request | Ample Parking & Premium Finishes



Josh Haith  
Josh@Haith.com  
O: (913) 888-3456 x 7  
www.Haith.com



David Gunter  
DGunter@Haith.com  
O: (913) 888-3456 x 8  
M: (913) 265-8029



For Lease | 9400 Reeds Road Overland Park, KS 66207

1st Floor Renovated Suite with Private Offices on Glass



- 1 Year Minimum
- \$20 PSF Full Service Rent
- Reception Area
- 6 Private Offices (4 on Glass)
- Fully Furnished Office
- Restrooms, Break Room / Kitchen



Josh Haith  
Josh@Haith.com  
O: (913) 888-3456 x 7  
www.Haith.com

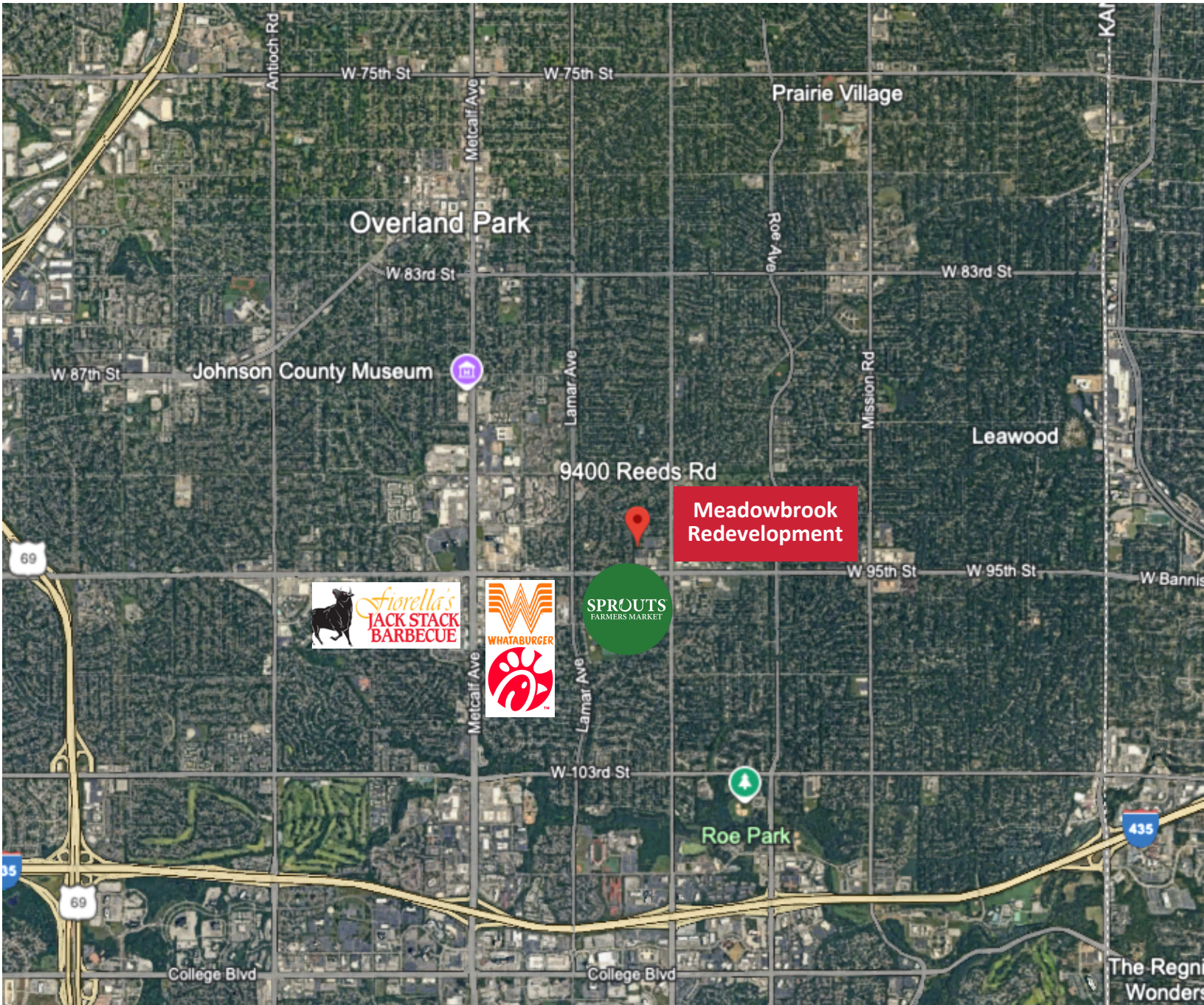


David Gunter  
DGunter@Haith.com  
O: (913) 888-3456 x 8  
M: (913) 265-8029





**For Lease | 9400 Reeds Road Overland Park, KS 66207**  
**1st Floor Renovated Suite with Private Offices on Glass**



**Excellent Location Near Hard  
 Corner of 95th & Nall  
 Great Access to I-435, 69 Hwy**

I-435 & Roe	2 Miles
69 Hwy & 95th	3 Miles

**Josh Haith**  
 Josh@Haith.com  
 O: (913) 888-3456 x 7  
 www.Haith.com



**David Gunter**  
 DGunter@Haith.com  
 O: (913) 888-3456 x 8  
 M: (913) 265-8029