

# FOR SALE/LEASE

Fixtured Dental/Medical Clinic Space

3208 Parsons Road NW  
Edmonton, AB



**Ian Fletcher**

(780) 913-4663

IanFletcher@MaxWellCommercial.ca

**Romi Sarna**

(780) 909-0831

Romi@RomiSarna.ca

**MaxWell Commercial**

4107 99 Street

Edmonton, AB T6E 3N4

(780) 450-6300

www.MaxWellCommercial.ca



*Commercial*

MaxWell Polaris

# FOR SALE/LEASE

Fixtured Dental/Medical Clinic Space

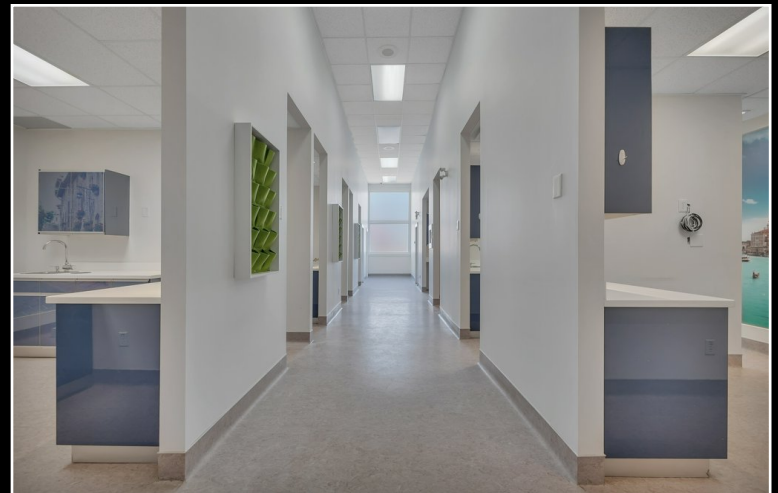
3208 Parsons Road NW  
Edmonton, AB

- Previously Occupied by Dental Clinic
- All Power and Plumbing is Capped and Ready for Equipment
- X-Ray Room, Upgraded Power
- Second Floor Office Space
- Easily Converted to Office
- Exposure to Parsons Road
- Ample Parking in Front and Rear

[Click for Additional Photos](#)



Reception



Clinic



Dental Room



Prep Area

**Ian Fletcher**

(780) 913-4663

IanFletcher@MaxWellCommercial.ca

**Romi Sarna**

(780) 909-0831

Romi@RomiSarna.ca

# FOR SALE/LEASE

Fixtured Dental/Medical Clinic Space

3208 Parsons Road NW  
Edmonton, AB

SALE PRICE	\$1,000,000
YEAR BUILT	2002
ZONING	BE - Business Employment
EXTRA FEATURES	Skylights, Extra Power Medical Space Large Lobby and Waiting Area Nearly Turn-Key Dental Space High Ceilings

SIZE	Main Floor: 2,406 SF +/- 2nd Floor: 966 SF +/- Total: 3,372 SF +/-
LEGAL	Plan: 0227127 Unit: 2
EXPENSES	Condo Fee: \$736.31/Month Taxes (2023): \$13,667.98
BUILDOUT	6 Exam Room, Boardroom, Prep, X-Ray, Reception + 2 Offices



**Ian Fletcher**

(780) 913-4663

IanFletcher@MaxWellCommercial.ca

**Romi Sarna**

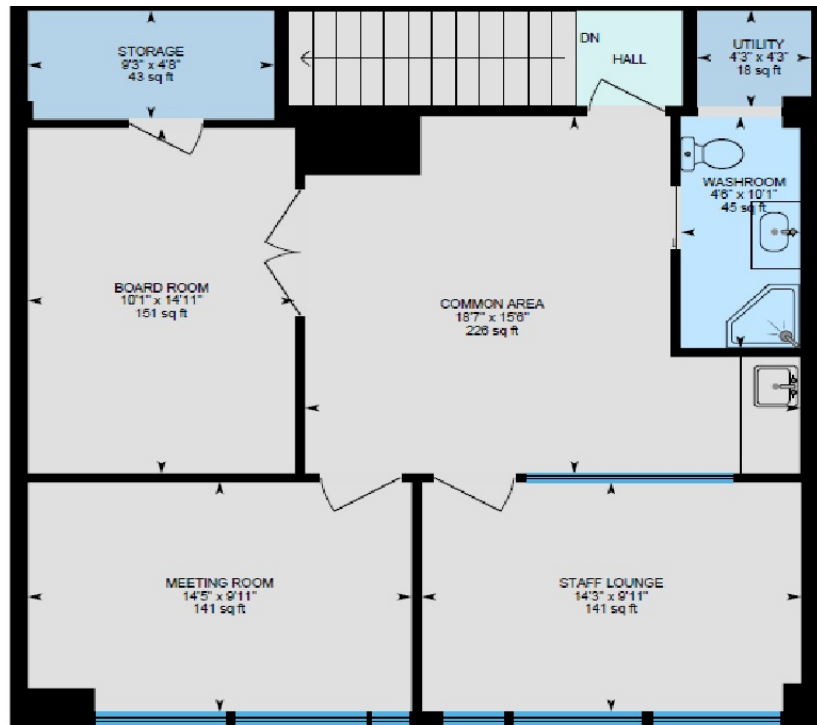
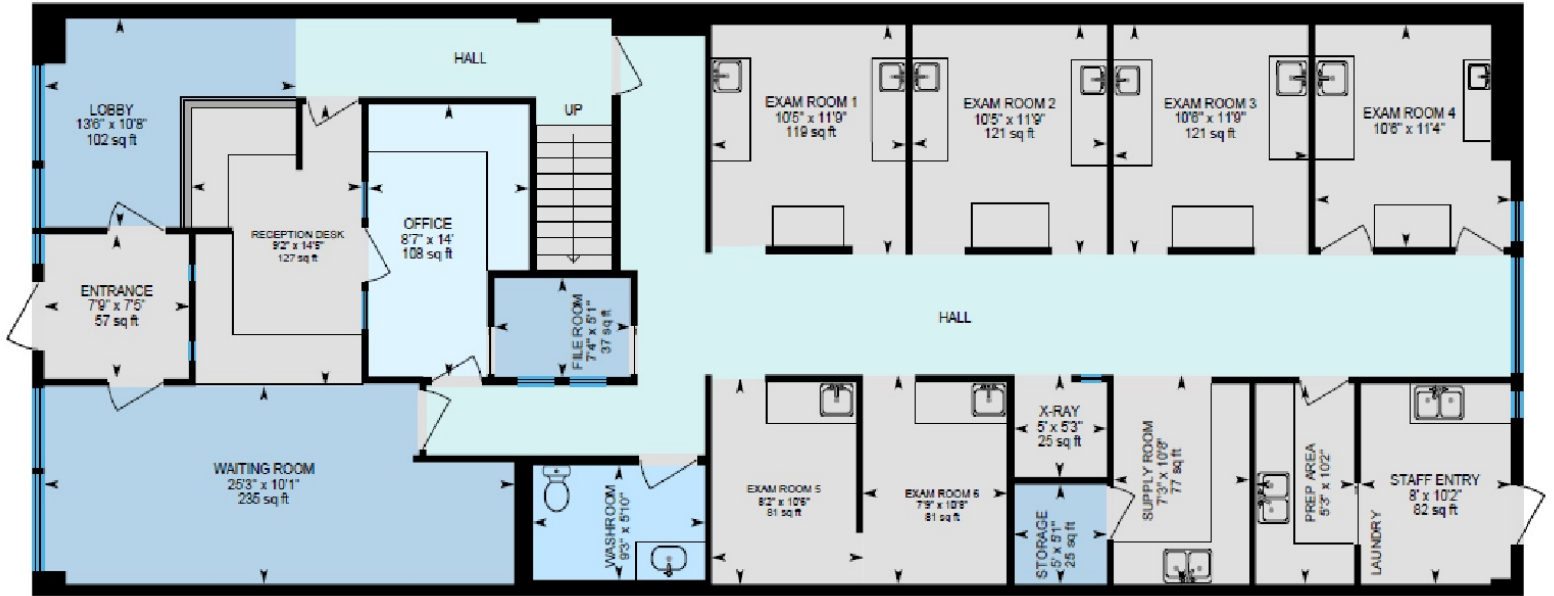
(780) 909-0831

Romi@RomiSarna.ca

# FOR SALE/LEASE

Fixtured Dental/Medical Clinic Space

3208 Parsons Road NW  
Edmonton, AB



**Ian Fletcher**

(780) 913-4663

IanFletcher@MaxWellCommercial.ca

**Romi Sarna**

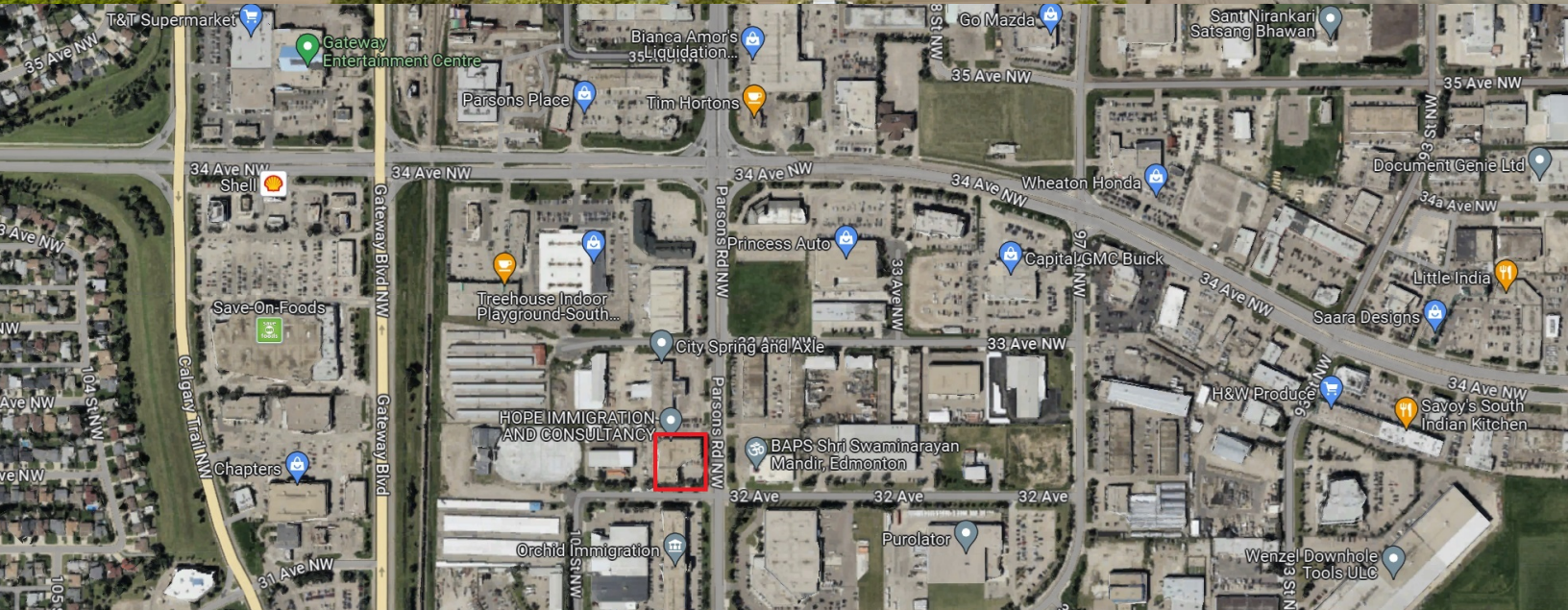
(780) 909-0831

Romi@RomiSarna.ca

# FOR SALE/LEASE

## Fixtured Dental/Medical Clinic Space

3208 Parsons Road NW  
Edmonton, AB



**Ian Fletcher**  
(780) 913-4663  
IanFletcher@MaxWellCommercial.ca

**Romi Sarna**  
(780) 909-0831  
Romi@RomiSarna.ca