



105 8257 92nd Street, Delta, BC

Highlights

- ▶ 2,157 SF warehouse
- ▶ 16'-26' clear ceiling height
- ▶ One grade loading door
- ▶ 2 parking spaces

Gary Haukeland*
Senior Vice President
604 691 6693
ghaukeland@naicommercial.ca
*Personal Real Estate Corporation

J-D Murray
Senior Associate
604 691 6664
jdmurray@naicommercial.ca

NAI Commercial
1075 W Georgia St, Suite 1300
Vancouver, BC V6E 3C9
+1 604 683 7535
naicommercial.ca



105 8257 92nd Street

Delta, BC

The Opportunity

The property represents an opportunity to purchase a 2,157 SF strata office warehouse constructed in 2015 in the Buckingham Industrial Estates complex. The unit consists of approximately 2,157 SF of showroom/warehouse with 16' to 26' clear ceiling height and one rear grade loading door. The Strata fees are approximately \$200 per month, and The City of Delta Official Community Plan designates the existing General Land use for the property as "Industrial." The intent of this designation is to establish light, heavy, and water-related industrial uses

Location

The property is located on the west side of 92nd Street, just south of River Road in north Delta, B.C.. The property has easy highway access to the Alex Fraser Bridge, the Queensborough Bridge and Richmond Connector, with access to the rest of the Lower Mainland, Greater Vancouver, and all amenities.

Gary Haukeland*
Senior Vice President
604 691 6693
ghaukeland@naicommercial.ca

*Personal Real Estate Corporation

J-D Murray
Senior Associate
604 691 6664
jdmurray@naicommercial.ca

Property Details

Civic Address

105 8257 92nd Street
Delta, BC V4G 0A44

Legal Description

Strata Lot 18 District Lot 132 Group 2
New Westminster District Strata Plan
EPS2712. Together With An Interest In
The Common Property In Proportion To
The Unit Entitlement Of The Strata Lot
As Shown On Form V

PID

029-535-891

Zoning & OCP Designation

I-2 (Medium Impact Industrial Zone)

Property Taxes

\$8,943.47 (2025)

Price

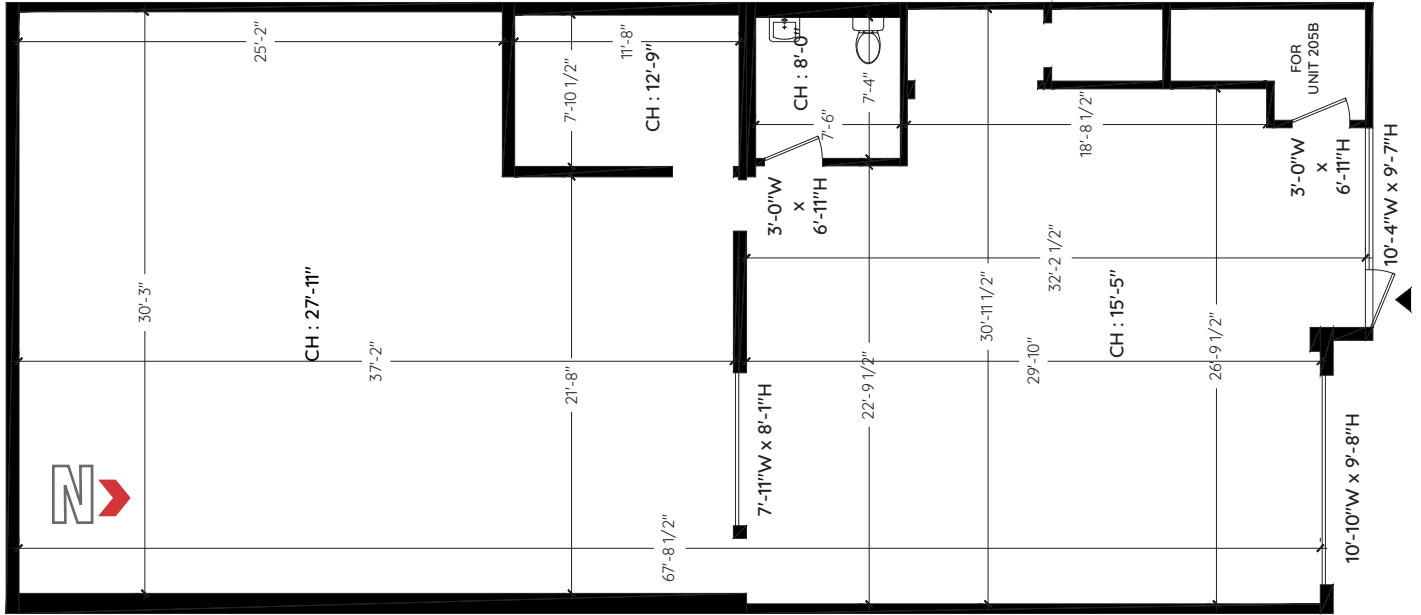
\$990,000

NAI Commercial

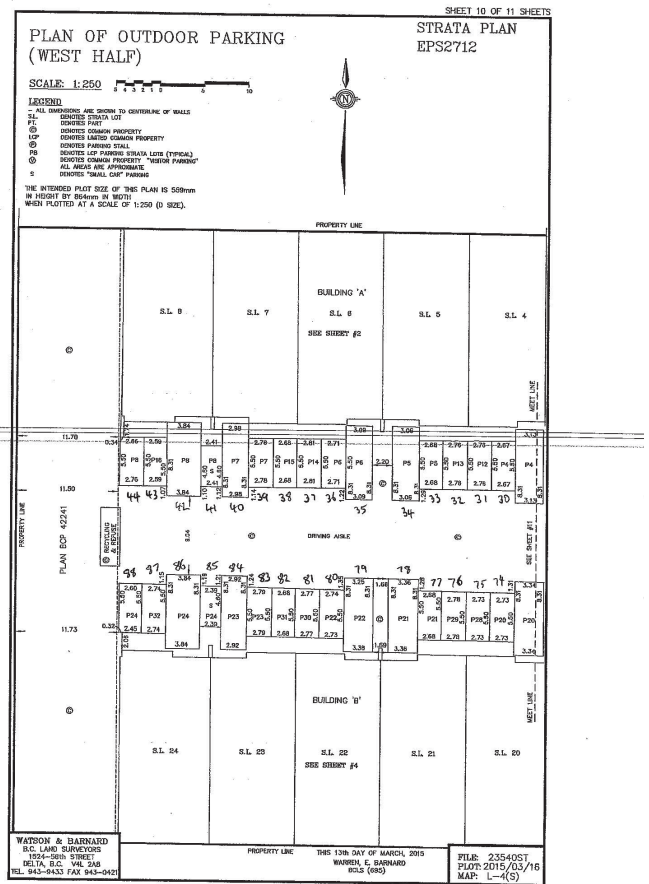
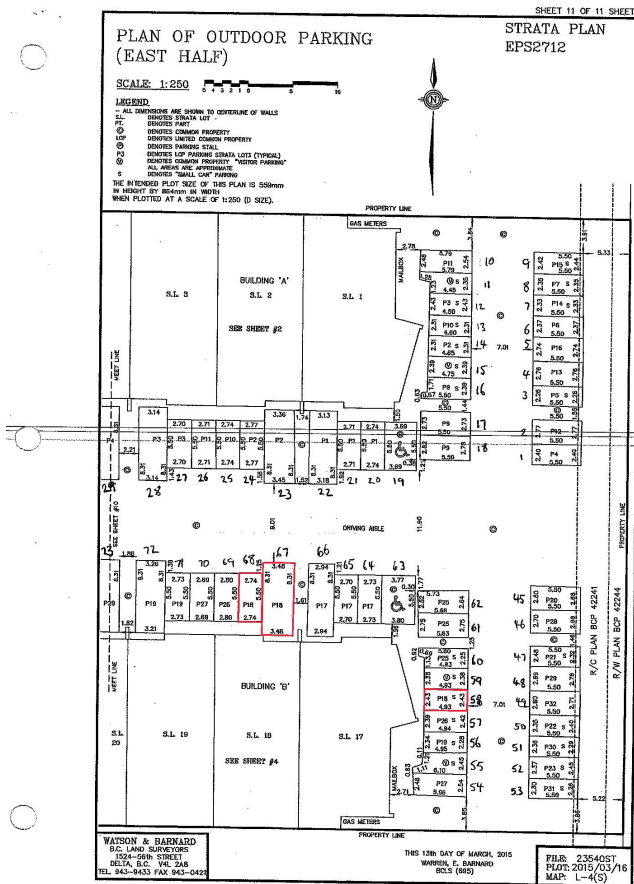
NAI Commercial
1075 W Georgia St, Suite 1300
Vancouver, BC V6E 3C9
+1 604 683 7535
naicommercial.ca

No warranty or representation, express or implied, is made as to the accuracy of the information contained herein, and the same is submitted subject to errors, omissions, change of price, rental or other conditions, prior sale, lease or financing, or withdrawal without notice, and of any special listing conditions imposed by our principals no warranties or representations are made as to the condition of the property or any hazards contained therein are any to be implied. Aerial image(s) courtesy of Google, Landsat/Copernicus

Floor Plan



Parking Stalls



No warranty or representation, express or implied, is made as to the accuracy of the information contained herein, and the same is submitted subject to errors, omissions, change of price, rental or other conditions, prior sale, lease or financing, or withdrawal without notice, and of any special listing conditions imposed by our principals no warranties or representations are made as to the condition of the property or any hazards contained therein are any to be implied. Aerial image(s) courtesy of Google, Landsat/Copernicus

NAI Commercial
1075 W Georgia St, Suite 1300
Vancouver, BC V6E 3C9
+1 604 683 7535
naicommercial.ca



Gary Haukeland*, Senior Vice President
604 691 6693 | ghaukeland@naicommercial.ca
*Personal Real Estate Corporation

J-D Murray, Senior Associate
604 691 6664 | jdmurray@naicommercial.ca

NAI Commercial

No warranty or representation, express or implied, is made as to the accuracy of the information contained herein, and the same is submitted subject to errors, omissions, change of price, rental or other conditions, prior sale, lease or financing, or withdrawal without notice, and of any special listing conditions imposed by our principals no warranties or representations are made as to the condition of the property or any hazards contained therein are any to be implied. Aerial image(s) courtesy of Google, Landsat/Copernicus

NAI Commercial
1075 W Georgia St, Suite 1300
Vancouver, BC V6E 3C9
+1 604 683 7535
naicommercial.ca