

George J. Hartman  
Architects, P.C.

6905 Telegraph Road  
Suite 101  
Bloomfield Hills, MI 48301

248-258-5811 ph.  
hartmanarchitects@ameritech.net

Owner:

Vestevich  
Properties II,  
LLC.

6905 Telegraph Road,  
Suite 260  
Bloomfield Hills, Michigan  
48301

Project:

6905  
Telegraph  
Road

6905 Telegraph Road  
Bloomfield Hills, MI 48301

Released For:

March 22, 2017

- \_\_\_\_\_
- \_\_\_\_\_
- \_\_\_\_\_
- \_\_\_\_\_
- \_\_\_\_\_
- \_\_\_\_\_
- \_\_\_\_\_
- \_\_\_\_\_
- \_\_\_\_\_
- \_\_\_\_\_

© Copyright 2017

THESE DRAWINGS, DOCUMENTS, DESIGNS, DETAILS  
AND ATTACHMENTS ARE THE SOLE PROPERTY  
OF GEORGE J. HARTMAN ARCHITECTS, P.C. AND  
ARE NOT TO BE REPRODUCED IN PART OR IN  
WHOLE WITHOUT EXPRESS WRITTEN CONSENT OF  
GEORGE J. HARTMAN ARCHITECTS, P.C. THESE  
DRAWINGS ARE PROTECTED BY THE FEDERAL  
COPYRIGHT ACT.

NOTE TO THE BUILDING OFFICIAL:  
THESE DOCUMENTS ARE SUBMITTED ONLY FOR  
THE PROJECT LISTED ABOVE AND SHOULD NOT  
BE ACCEPTED WITHOUT THE SIGNATURE AND  
SEAL OF THE ARCHITECT.

Scale

AS NOTED

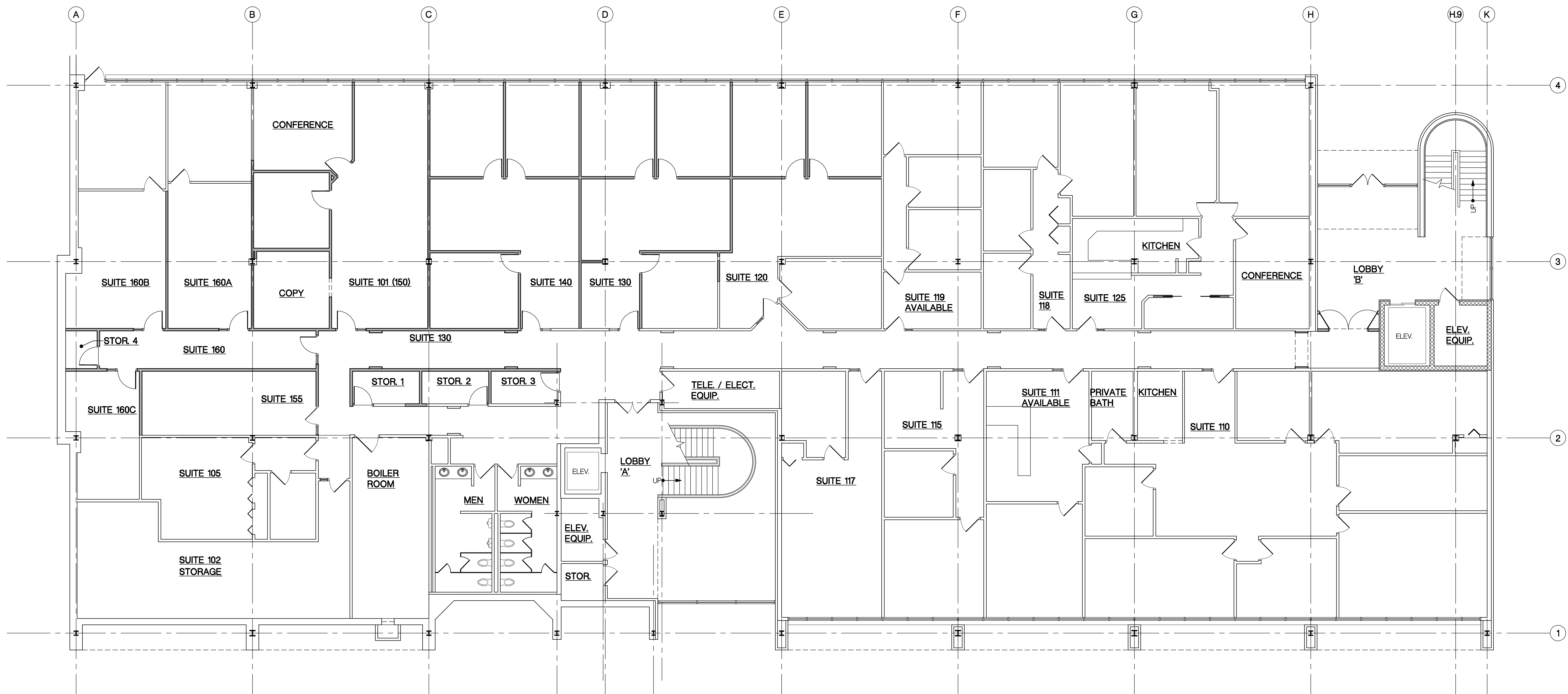
Project Number

1509

Sheet Number

A-1

1509 - 6905 Telegraph Road



**FIRST FLOOR PLAN**  
NORTH SCALE: 1/8" = 1'-0"