

For Lease

RETAIL SPACE in Geissler's Plaza

\$13.00/SF NNN | 1,200 SF



84 Bridge Street

East Windsor, Connecticut 06088

Property Highlights

- Established High Traffic Shopping Center
- 1,200 SF
- Easy Access To I-91
- Ample Parking

Property Description

For Lease: 1,200 SF former insurance agency space for lease in Geissler's Plaza, a large Shopping Plaza located on highly traveled Bridge St, just .5 miles West of I-91. This property is anchored by Geissler's Supermarket. The plaza benefits frontage along Route 140 (Bridge St), providing exceptional visibility and is a great opportunity for a successful business location with ample parking, a strong tenant mix, and attractive demographics.

OFFERING SUMMARY

Available SF	1,200 SF
Building Size	60,764 SF

DEMOGRAPHICS

Stats	Population	Avg. HH Income
0.3 Miles	274	\$99,798
0.5 Miles	833	\$96,094
1 Mile	3,934	\$99,099



For more information

Jim Reardon

O: 860 508 2192
jreardon@spotkin.com

For Lease

RETAIL SPACE in Geissler's Plaza

1,200 SF | \$13.00 SF/yr

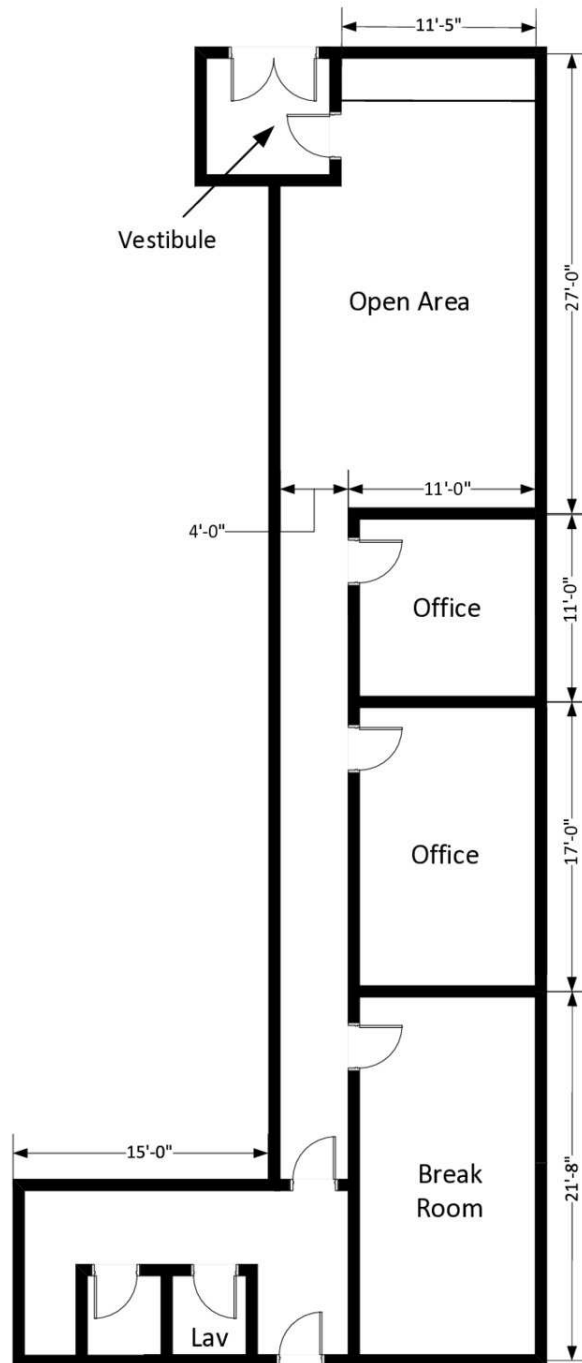


For Lease

RETAIL SPACE in Geissler's Plaza

1,200 SF | \$13.00 SF/yr

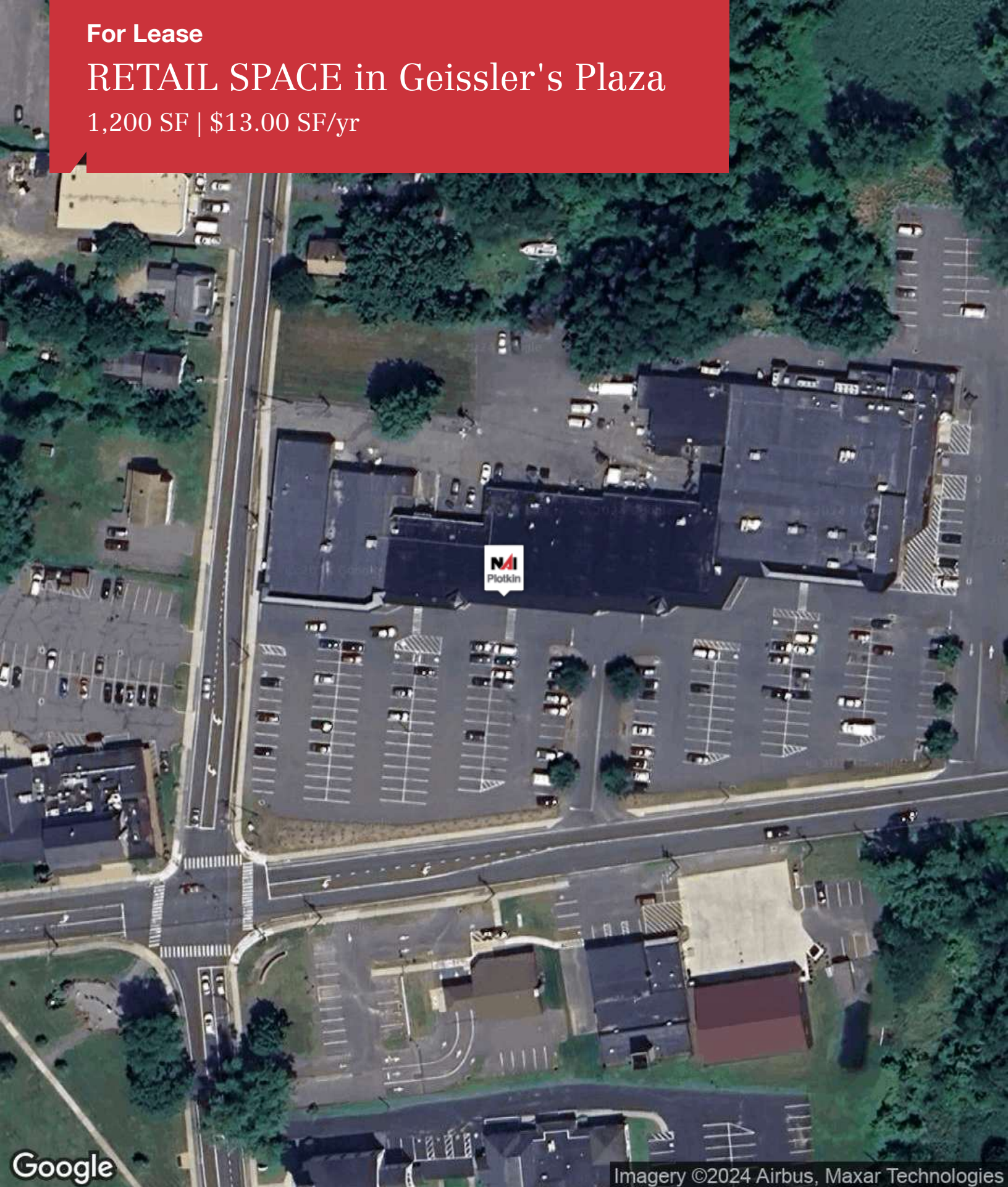
FLOOR PLAN 84 Bridge Street 1,200 SF



For Lease

RETAIL SPACE in Geissler's Plaza

1,200 SF | \$13.00 SF/yr



Google

Imagery ©2024 Airbus, Maxar Technologies

NAIPlotkin

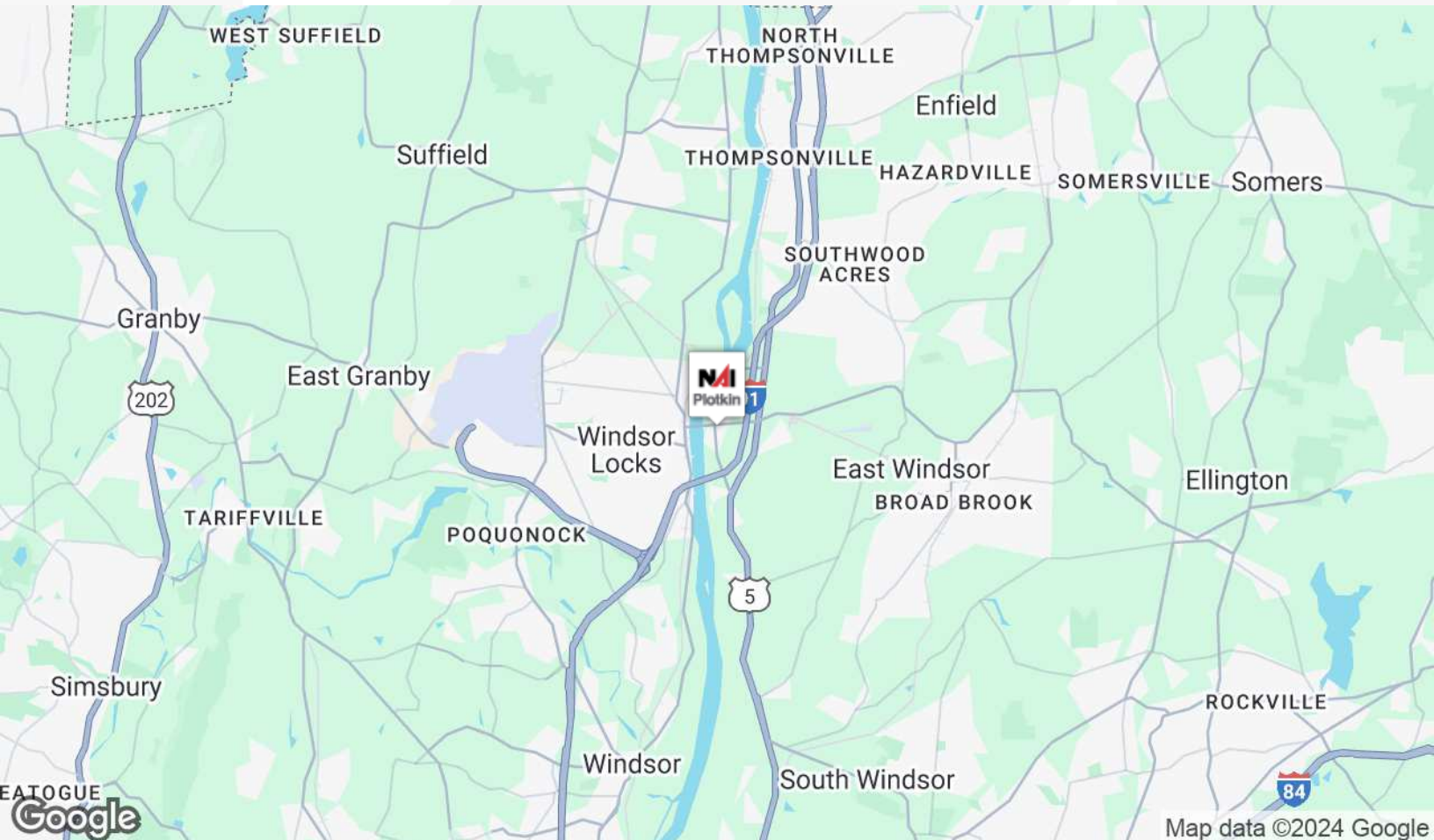
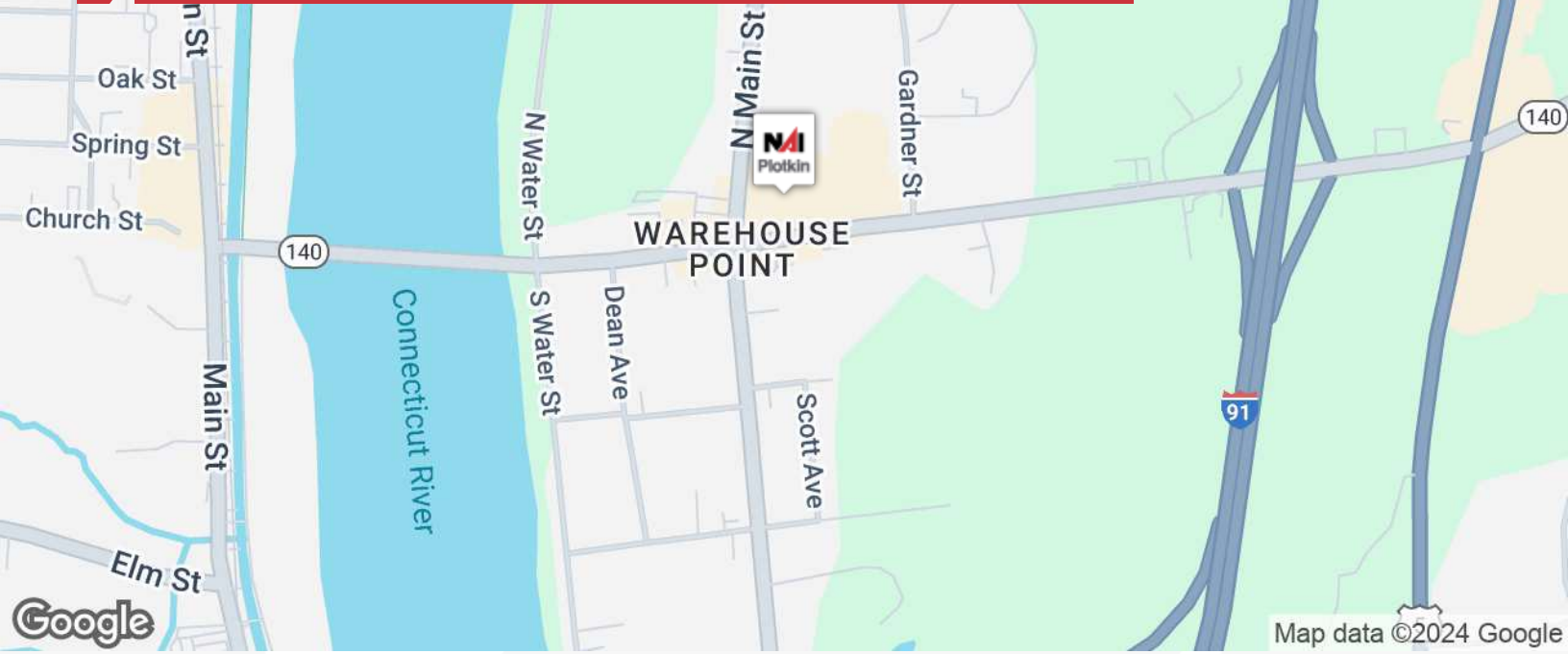
1350 Main Street, Suite 1410
Springfield, MA 01103
413 781 8000 tel
NAIPlotkin.com



For Lease

RETAIL SPACE in Geissler's Plaza

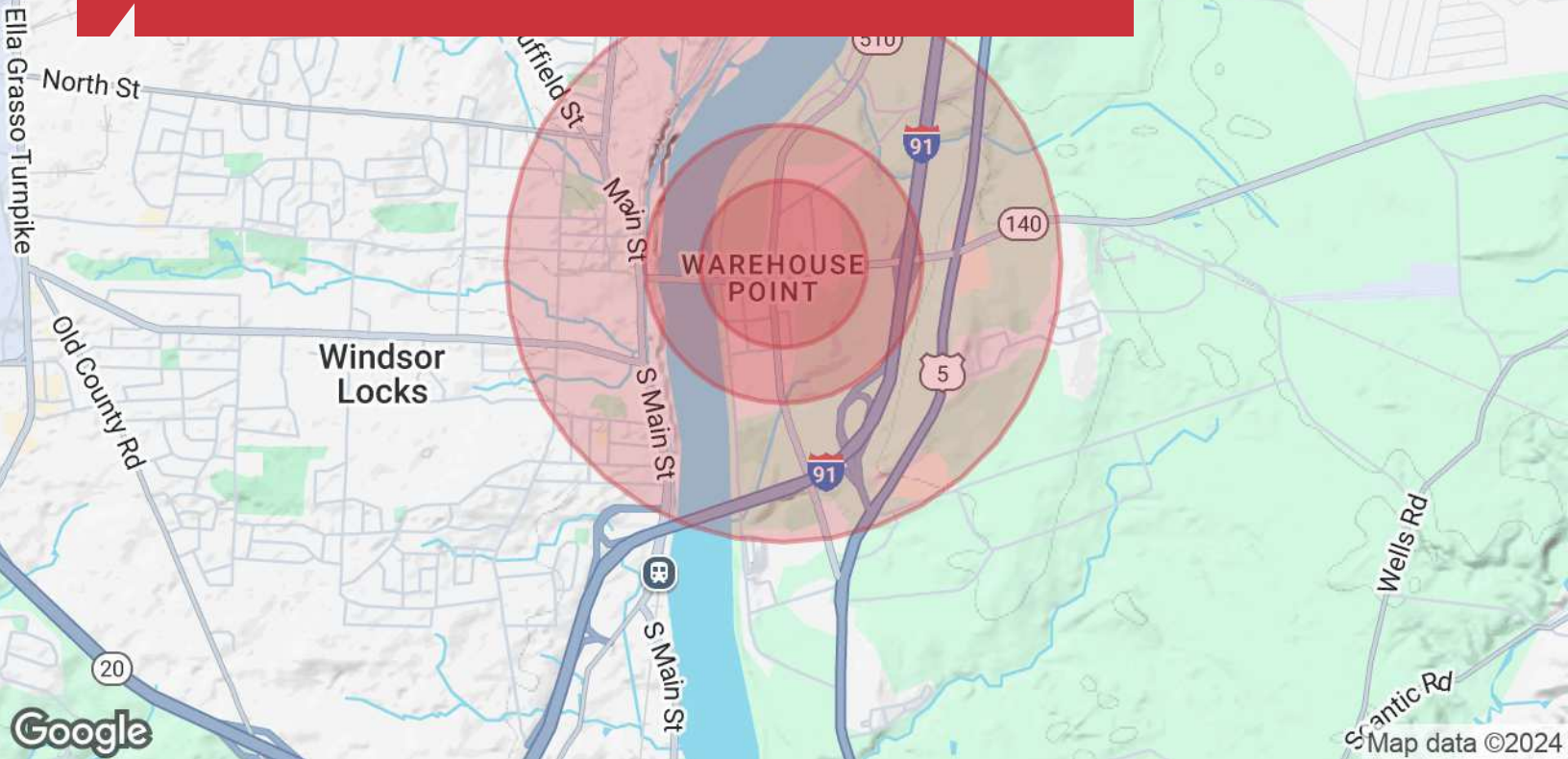
1,200 SF | \$13.00 SF/yr



For Lease

RETAIL SPACE in Geissler's Plaza

1,200 SF | \$13.00 SF/yr



	0.3 Miles	0.5 Miles	1 Mile
Population			
TOTAL POPULATION	274	833	3,934
MEDIAN AGE	46	45	44
MEDIAN AGE (MALE)	44	43	43
MEDIAN AGE (FEMALE)	48	47	45
Households & Income			
TOTAL HOUSEHOLDS	128	402	1,883
# OF PERSONS PER HH	2.1	2.1	2.1
AVERAGE HH INCOME	\$99,798	\$96,094	\$99,099
AVERAGE HOUSE VALUE	\$302,290	\$315,396	\$316,596
Race			
% WHITE	87.8%	84.2%	78.6%
% BLACK	5.2%	7.8%	10.3%
% ASIAN	2.0%	2.9%	5.6%
% HAWAIIAN	0.0%	0.0%	0.0%
% INDIAN	0.0%	0.1%	0.3%
% OTHER	4.9%	5.1%	5.2%
Ethnicity			
% HISPANIC	10.6%	11.4%	12.0%

* Demographic data derived from 2020 ACS - US Census