

FOR LEASE

135 Old Cove Road

Liverpool, New York 13088



Donwood Office Park

1,270± SF – 1,426± SF Office Suites Available

Property Highlights

- 1,270± SF and 1,426± SF suites available now, nicely laid out
- Professional single story office buildings
- Beautifully landscaped
- Very accessible and very visible
- Great parking available
- Located less than one mile from I-90
- Nearby amenities include banks, restaurants, pharmacies, grocery stores and coffee shops

Traffic Counts

Oswego Road/Route 57

Source: NYS DOT 2022

Contact

DONALD R. O'LEARY
 Associate Real Estate Broker
 +1 315 445 8515
 doleary@pyramidbrokerage.com



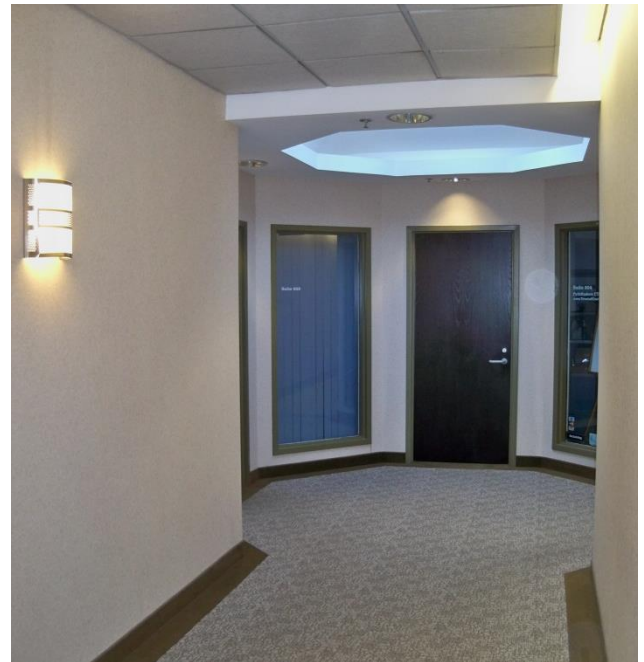
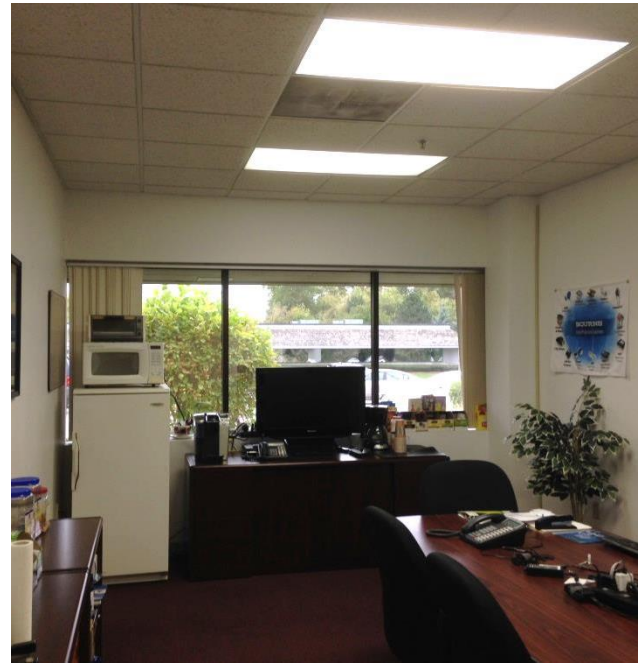
Demographic	1 Mile	3 Miles	5 Miles
Population	8,777	46,972	121,474
Households	3,864	20,664	52,470
Average H.H. Income	\$87,607	\$95,687	\$91,674
Daytime Employees	3,482	24,212	62,934

Source: ESRI Business Analyst 2023

5845 Widewaters Pkwy, Suite 200
 East Syracuse, New York 13057
 +1 315 445 1030
 pyramidbrokerage.com

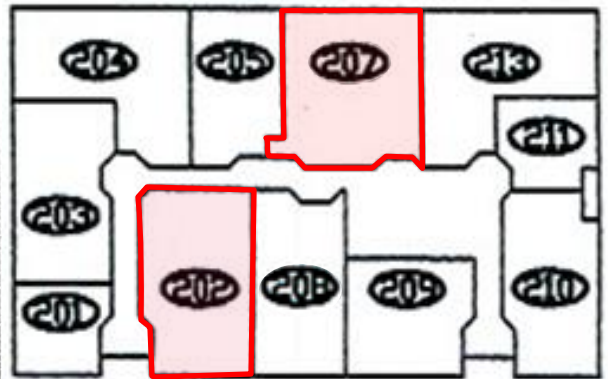
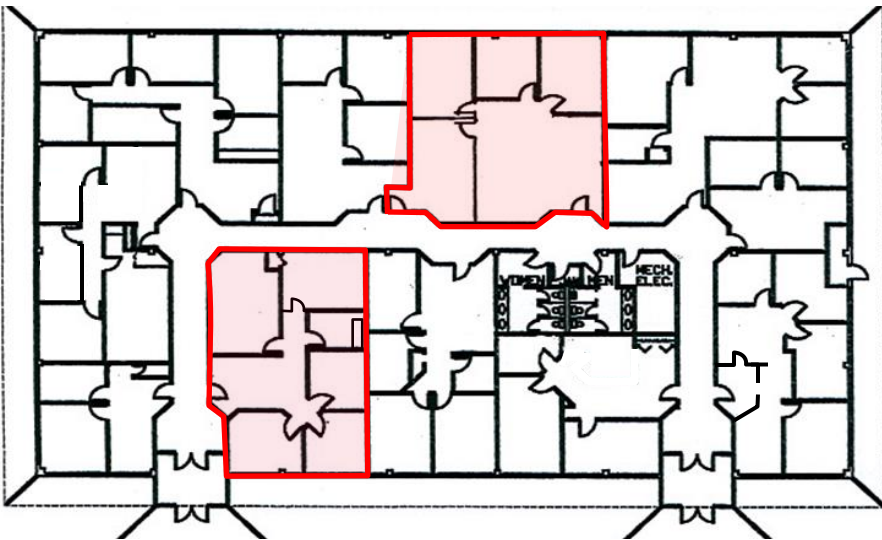
FOR LEASE

135 Old Cove Road | Liverpool, New York



FOR LEASE

135 Old Cove Road | Liverpool, New York



Suite 201.....	549 SF
Suite 202.....	1270 SF Available 2/1/2025
Suite 203.....	1145 SF
Suite 204.....	1380 SF
Suite 205.....	939 SF
Suite 207.....	1426 SF
Suite 208.....	1074 SF
Suite 209.....	906 SF
Suite 210.....	1180 SF
Suite 211.....	583 SF
Suite 213.....	1392 SF
Total Leasable.....	11844 Sf

FOR LEASE

135 Old Cove Road | Liverpool, New York

