

FOR SALE
467 Ottawa Ave,
Holland, MI 49423

6 Condo Units Remaining
5 Condo Units Under Contract



11 newly built storage building/condo units with multiple buying options ranging from 1,920 - 5,760 SF. Units have 22'+ ceiling height, 14' x 16' overhead door with operator as well as front and rear service doors.

Great location close to Lake Macatawa for those with boats!

*Units will be completed
May 2025*



TOM POSTMA
• DIR +1 616 355 3145
• MOB +1 616 283 2411
• TOM@LAKESHORECOMMERCIAL.COM

DREW DURHAM
• DIR +1 616 355 3148
• MOB +1 616 566 2039
• DREW@LAKESHORECOMMERCIAL.COM

STORAGE BUILDING/CONDOS
1,920 - 5,760 SF

www.LakeshoreCommercial.com
44 East 8th Street, Suite 510 | Holland, MI 49423 | 616.394.4500

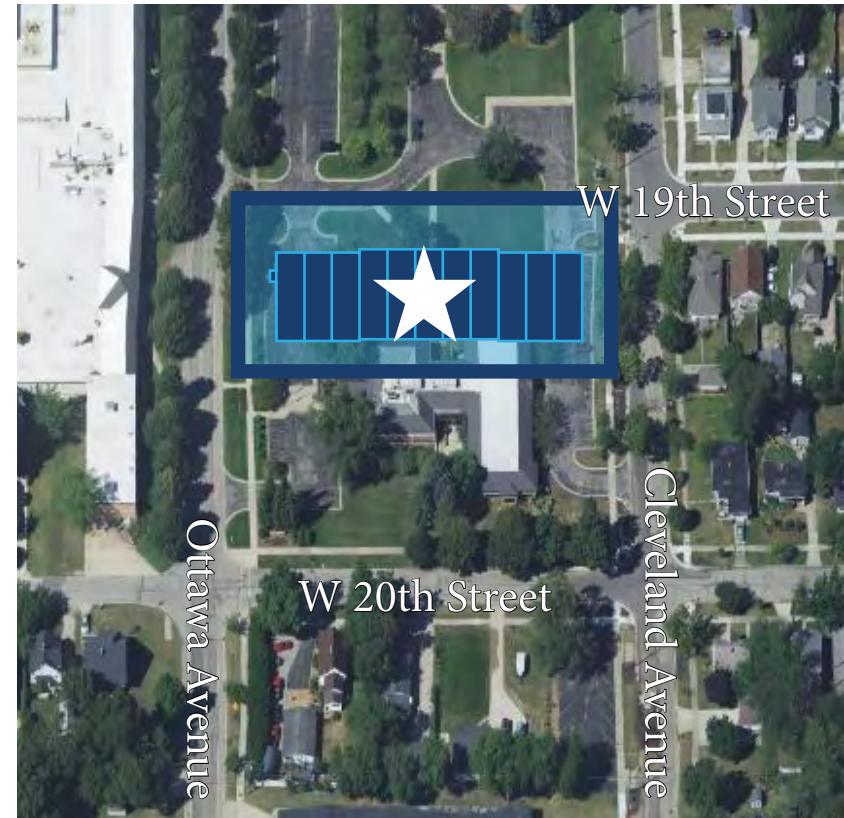
SALE INFORMATION

Buying Options	Option 1	Option 2	Option 3
No. of Units	1 Unit	2 Units	3 Units
Total SF	1,920 SF	3,840 SF	5,760 SF
Price/Unit	\$393,600	\$760,320	\$1,105,920
Price/SF	\$205/SF	\$198/SF	\$192/SF
Measurements	24 x 80	48 x 80	72 x 80
Stories	1	1	1

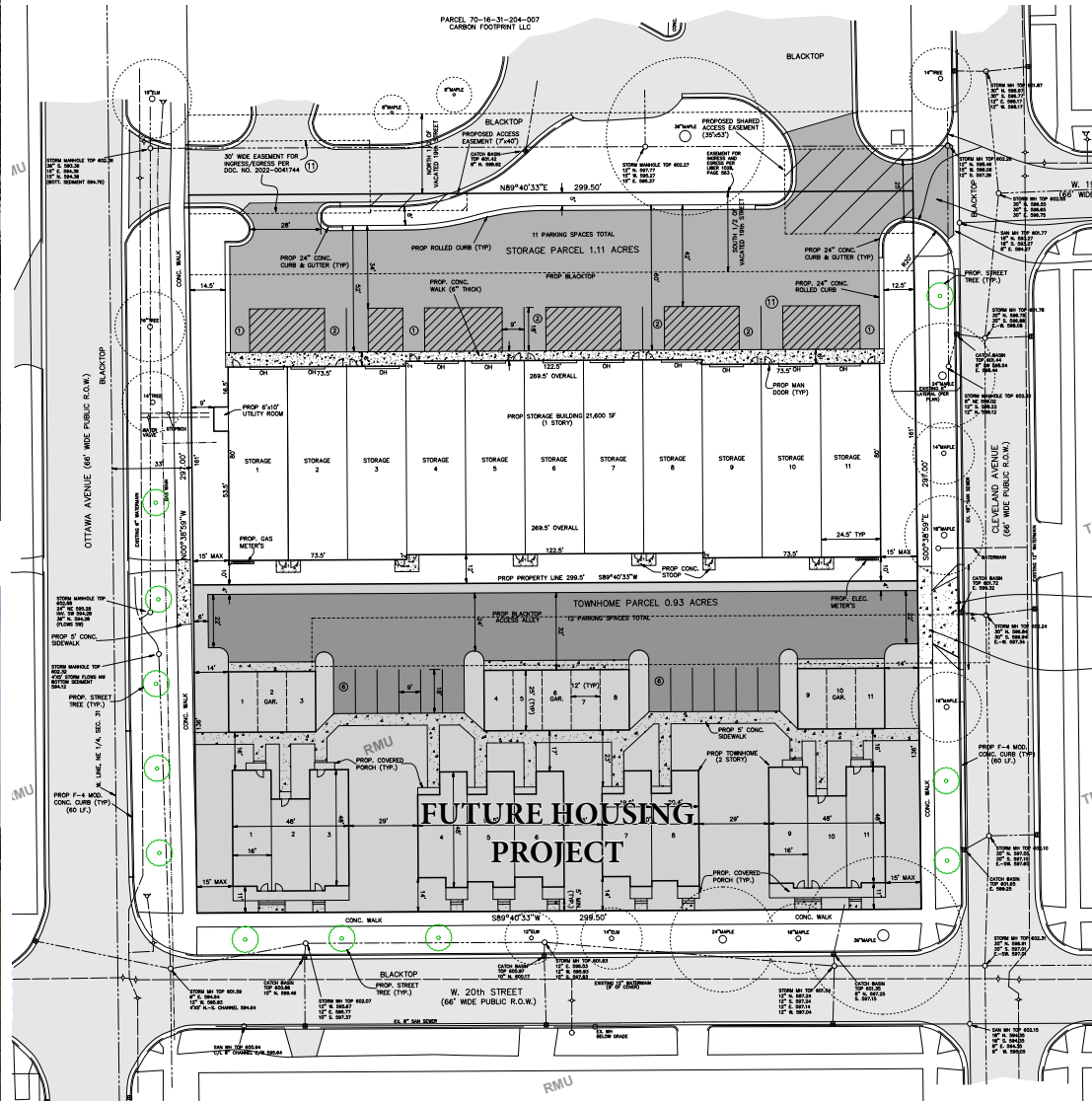
Taxing Authority	City of Holland
Part of APN	70-16-31-209-001
County	Ottawa
Zoning	RMU
Year Built	2024

BUILDING HIGHLIGHTS

- 22'+ ceiling height
- R-22 3" insulated metal panel exterior walls
- R-38 insulated steel roof
- 14' wide x 16' tall insulated overhead door with operator
- Front and rear service doors
- 4" insulated metal panel unit separation wall
- 6" concrete floor "burnished" finish and floor drain at overhead door
- One barrier free toilet room and rough-in for kitchenette
- Painted interior finish
- Forced air heating
- 120/208 volt three phase electrical service with 125 AMP panel
- Standard warehouse level LED lighting
- Fire protection sprinkling system



PHOTOS



PHOTOS



AERIAL MAP



YOUR PREMIER BROKER IN WEST MICHIGAN

Lakeshore Commercial Real Estate has over 100 years of experience in the industry. We have seen many changes and evolutions over the years, but our focus has always remained the same: to serve businesses in our community and help them achieve their success. We specialize in all aspects of commercial real estate, including sales, management, and leasing. We have a deep understanding of the local market and the unique needs of different businesses. We use our expertise to help our clients find the right property, negotiate the best deals, and manage their properties efficiently and effectively. We don't just have you covered on the Lakeshore. We have created excellent relationships with brokers outside of the Lakeshore area to ensure we are serving you best. We are committed to our clients and their success. We work closely with each client to understand their needs and goals, and we develop customized solutions to help them achieve those goals.



TOM POSTMA
PRINCIPAL

DIRECT (+1) 616-355-3145
CELL (+1) 616-283-2411
TOM@LAKESHORECOMMERCIAL.COM



DREW DURHAM
PRINCIPAL

DIRECT (+1) 616-355-3148
CELL (+1) 616-566-2039
DREW@LAKESHORECOMMERCIAL.COM



JASON DEWITT
PRINCIPAL

DIRECT (+1) 616-355-3156
CELL (+1) 616-836-2856
JASON@LAKESHORECOMMERCIAL.COM



KRIS DEPREE
PRINCIPAL

DIRECT (+1) 616-355-3141
CELL (+1) 616-212-5576
KRIS@LAKESHORECOMMERCIAL.COM



W 19th Street

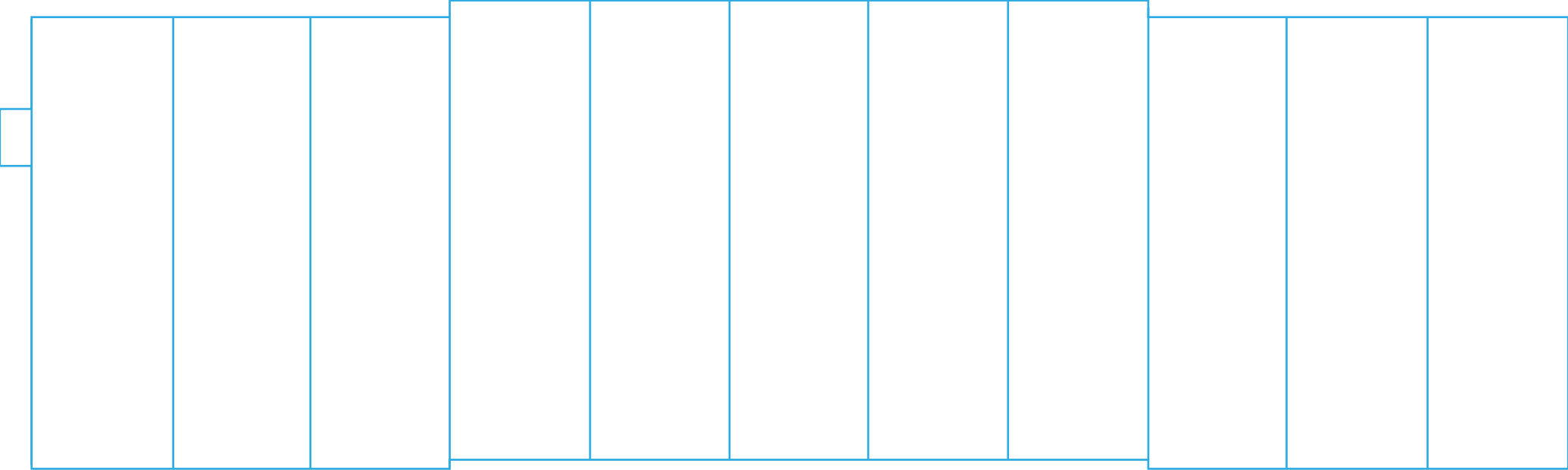
W 20th Street

Ottawa Avenue

Cleveland Avenue



AERIAL MAP





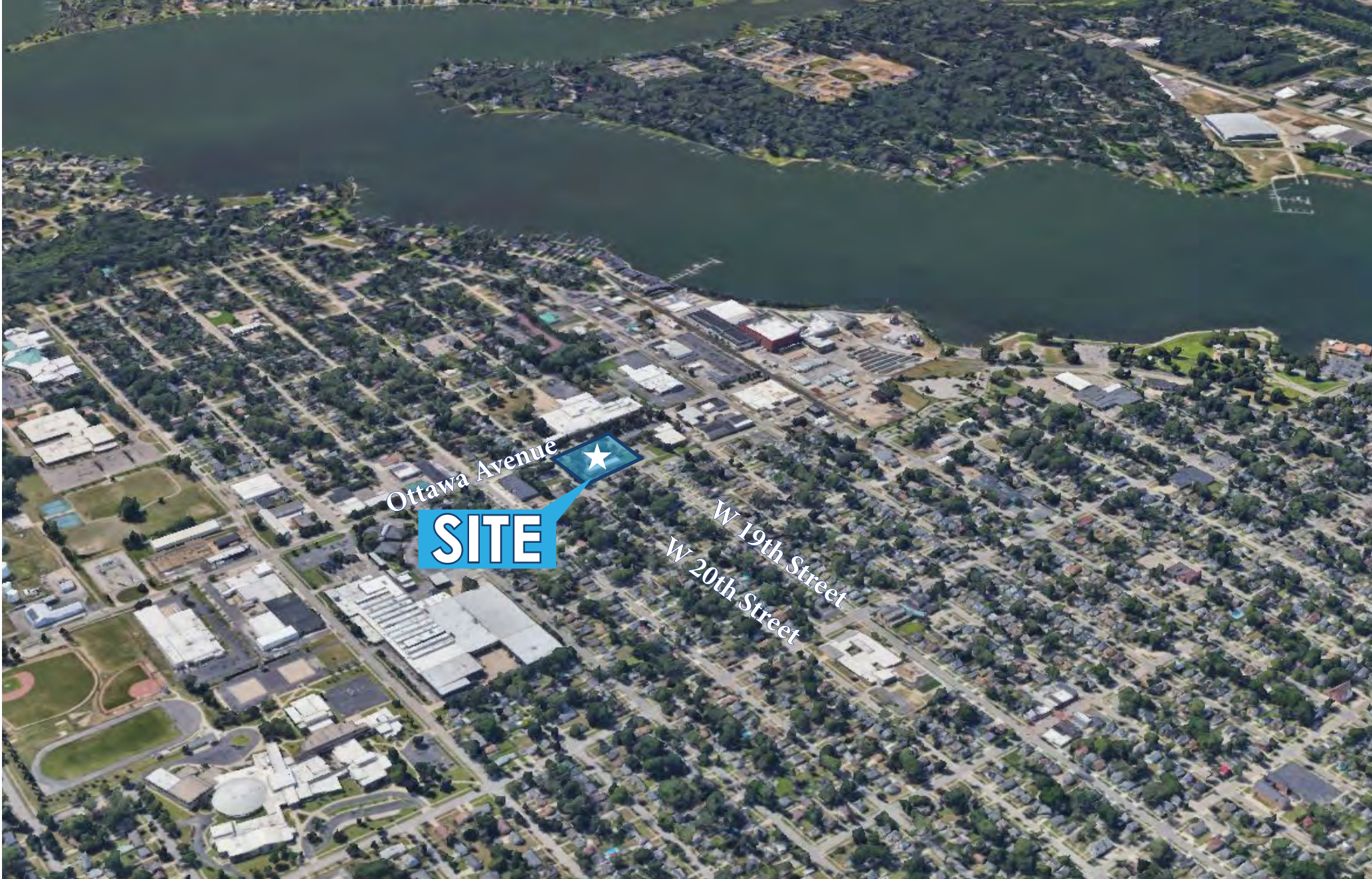
SITE

Ottawa Avenue

Cleveland Avenue

W 21st Street

W 19th Street



Ottawa Avenue

SITE



W 19th Street

W 20th Street