



WEIGAND
COMMERCIAL

EAST 21ST STREET RETAIL CENTER

FOR LEASE 2614-2628 E. 21ST ST. N., WICHITA, KS 67214

IMMEDIATE AVAILABILITY

LEASE RATE	\$10/SF
LEASE TYPE	NN
Estimated NN	\$2.00/SF
LEASE TERM	3-5 Years (Flexible)
YEAR BUILT	1998
PARKING	Ample, Doorside
ZONING	Limited Commercial

PROPERTY HIGHLIGHTS

- Situated in northeast Wichita, this center benefits from steady local traffic and proximity to Wichita State University, HealthCore Clinic, and key arterial routes.
- The area continues to see revitalization with new retail & service growth.

AVAILABLE	SPACE SIZE	LEASE RATE	DESCRIPTION
2620, #100	1,700± SF	\$10/SF (NN)	Open space with 3-tier sink.
2618, #102	850± SF	\$10/SF (NN)	Small retail with private rooms.

DEMOGRAPHICS	1 MILE	3 MILES	5 MILES
POPULATION	12,159	81,955	204,628
AVG. HH INCOME	\$47,793	\$76,910	\$83,108
MEDIAN AGE	28.1	31.8	34.7
TRAFFIC COUNTS			
21ST & HILLSIDE	31,807 VPD		



Matthew McClure | 316-292-3910 | mmclure@weigand.com

Weigand Real Estate - Commercial
Office: 316-262-6400
Weigand.com

EAST 21ST STREET RETAIL CENTER

FOR LEASE 2614-2628 E. 21ST ST. N., WICHITA, KS 67214

WEIGAND
COMMERCIAL

SUITE 2620



Matthew McClure | 316-292-3910 | mmcclure@weigand.com

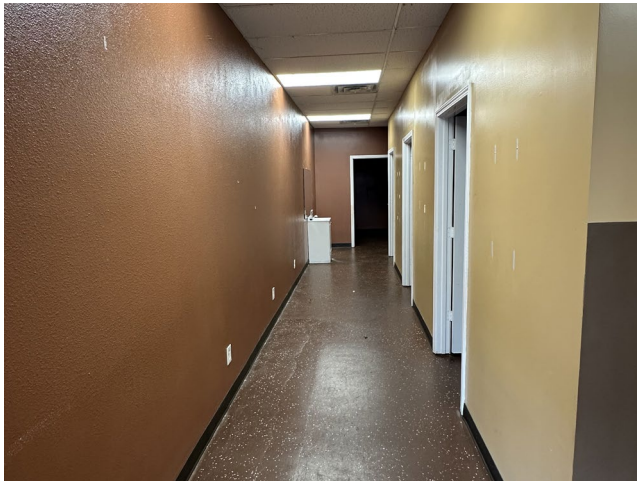
Weigand Real Estate - Commercial
Office: 316-262-6400
Weigand.com

EAST 21ST STREET RETAIL CENTER

FOR LEASE 2614-2628 E. 21ST ST. N., WICHITA, KS 67214

WEIGAND
COMMERCIAL

SUITE 2618



Matthew McClure | 316-292-3910 | mmcclure@weigand.com

Weigand Real Estate - Commercial
Office: 316-262-6400
Weigand.com

EAST 21ST STREET RETAIL CENTER

FOR LEASE 2614-2628 E. 21ST ST. N., WICHITA, KS 67214

WEIGAND
COMMERCIAL

AERIAL VIEW



Matthew McClure | 316-292-3910 | mmclure@weigand.com

Weigand Real Estate - Commercial
Office: 316-262-6400
Weigand.com