

Dielmann | Sotheby's
INTERNATIONAL REALTY



429 North Euclid Avenue

ST. LOUIS, MO 63108





Exciting, gorgeous and tremendously appealing property in the heart of the Central West End.

Enter to find a stunning foyer with a fountain that sets the tone for this remarkable property. Here you will also find a large, commercially zoned art gallery with an outdoor courtyard, the home fitness center, one full bath, one-half bath, and a 2-car garage. Upstairs by way of elevator or by stair is a magazine-worthy living space with a large great room, chef's kitchen, breakfast room, wine room, bar area, dining room, and two bedrooms including the primary bedroom suite with spa-like bath. It is heavenly. Also included on this level is a laundry room, a second bedroom with a bath, and a guest half bath. Outdoors is a gorgeous lap pool with relaxation areas. The 3rd level provides a guest suite, office, or use as party space. The service kitchen has an overhead door to access an outdoor kitchen and rooftop party spaces akin to your favorite resort. The lower level is an impressive space with beautiful stone walls, a large recreation room with a bar and kitchenette with an island, two bedrooms with baths ensuite, a spa room, half bath, laundry room, and a large storage room. This is a beautiful private home that also lends itself to commercial use for a private club, bed & breakfast, or other exciting ventures.



FLOOR 1

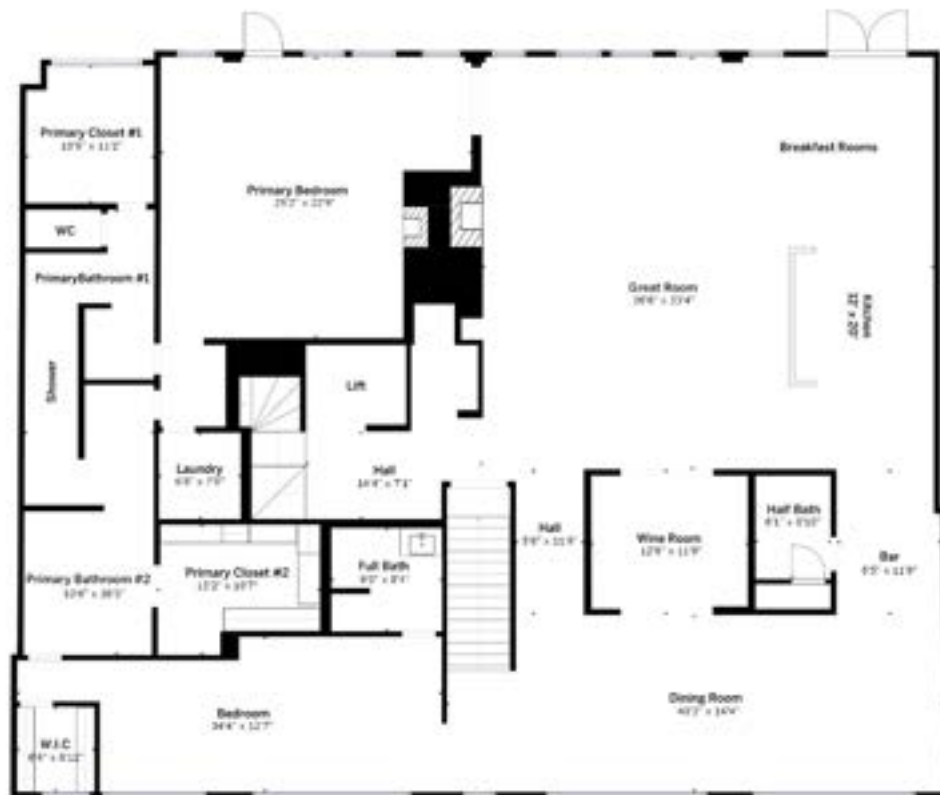
GROSS INTERNAL AREA
 FLOOR 1: 4042 sq ft, FLOOR 2: 4170 sq ft
 FLOOR 3: 4388 sq ft, FLOOR 4: 736 sq ft
 EXCLUDED AREAS: GARAGE: 717 sq ft
 TOTAL: 13349 sq ft
SCALES AND DIMENSIONS ARE APPROXIMATE, ACTUAL MAY VARY



FLOOR 2

GROSS INTERNAL AREA
 FLOOR 1: 4042 sq ft, FLOOR 2: 4170 sq ft
 FLOOR 3: 4388 sq ft, FLOOR 4: 736 sq ft
 EXCLUDED AREAS: GARAGE: 717 sq ft
 TOTAL: 13349 sq ft
SCALES AND DIMENSIONS ARE APPROXIMATE, ACTUAL MAY VARY

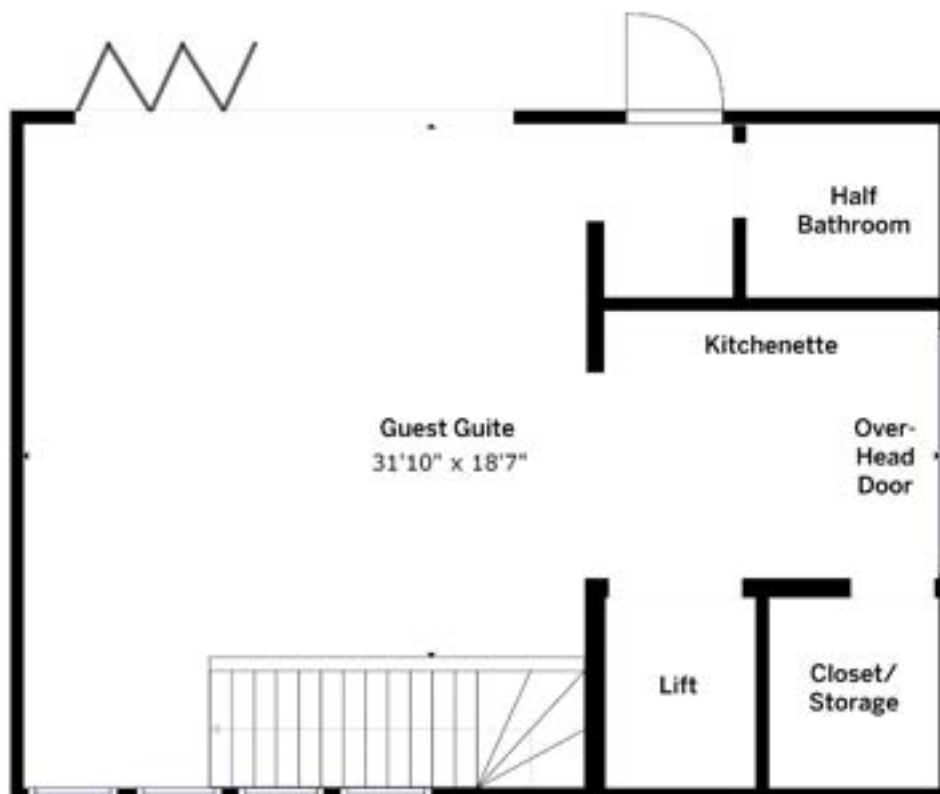




FLOOR 3

GROSS INTERNAL AREA
 FLOOR 1: 4242 sq ft, FLOOR 2: 4173 sq ft
 FLOOR 3: 4389 sq ft, FLOOR 4: 736 sq ft
 EXCLUDED AREAS: GARAGE: 717 sq ft
 TOTAL: 13347 sq ft

SCHEMATIC DIMENSIONS ARE APPROXIMATE. ACTUAL MAY VARY.



FLOOR 4

GROSS INTERNAL AREA
 FLOOR 1: 4242 sq ft, FLOOR 2: 4173 sq ft
 FLOOR 3: 4389 sq ft, FLOOR 4: 736 sq ft
 EXCLUDED AREAS: GARAGE: 717 sq ft
 TOTAL: 13347 sq ft

SCHEMATIC DIMENSIONS ARE APPROXIMATE. ACTUAL MAY VARY.



The main living space on the second level is right out of a magazine. Beautiful enriching spaces for living your best life. Here you will find a comfortable great room with a stackstone wall with a wood-burning fireplace and firewood nook. The kitchen caters to the home chef and meets every culinary need with a large center island with seating for five, a Hallman six-burner range, two dishwashers, built-in refrigerator and freezer drawers, an icemaker, and Miele coffee center. There is abundant storage and a dramatic skylight over the island. Adjacent, a striking glass-paned wine room complements a fully equipped bar area. Perfect for entertaining, the dining room accommodates large gatherings with ease.





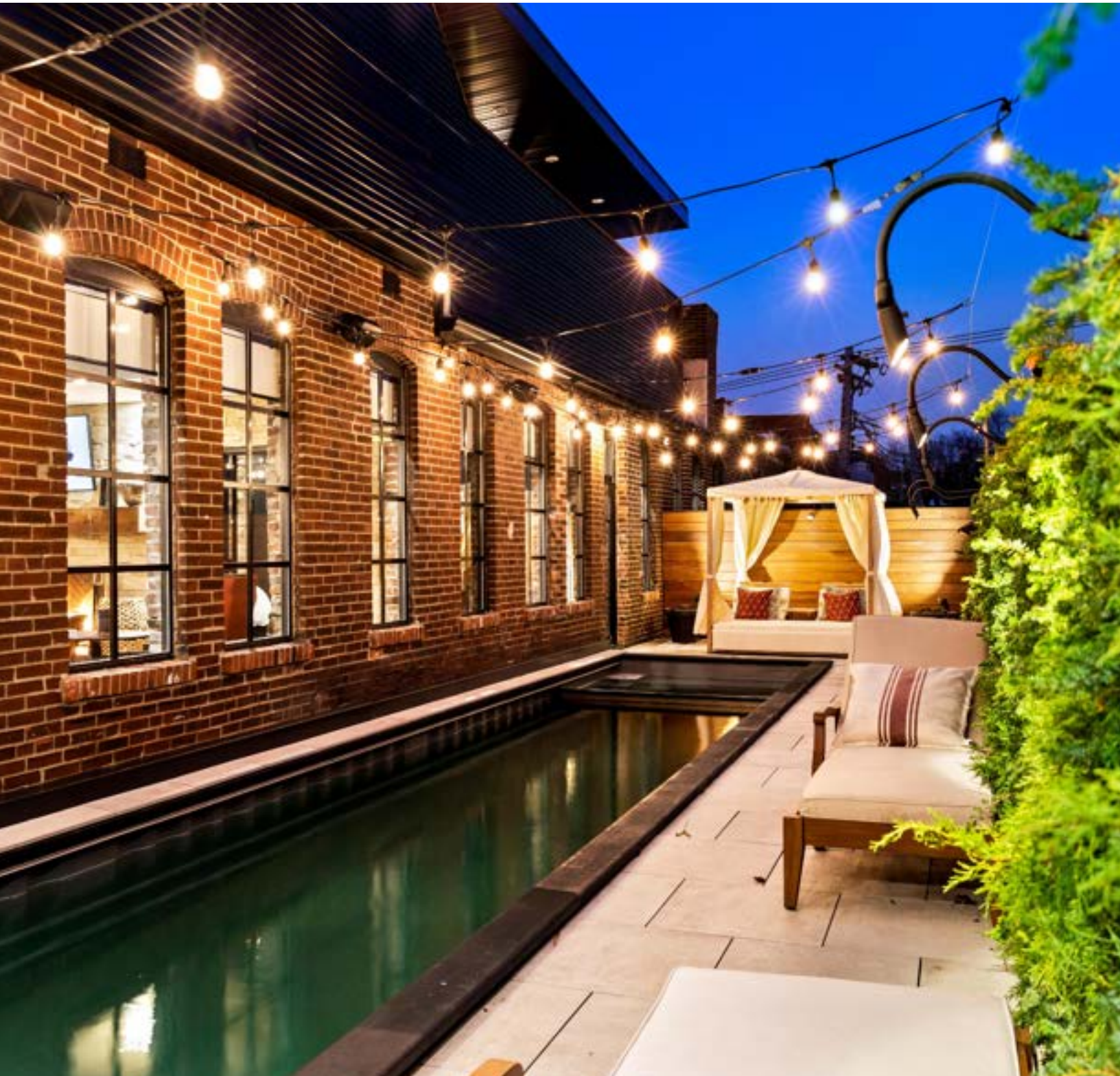
The primary suite is a large, beautiful room with a fireplace and exit to the outdoors where it is just steps to the hot tub end of the pool. The primary bath is spa-like with two separate sink and toilet areas, each with a top-of-the-line Toto toilets, two walk-in closets/dressing rooms, a skylit tub room, and a shared steam shower, all with heated floors, and all beautifully designed. Completing the primary bedroom area is secondary laundry room.



The lower level, also accessed by elevator or stair, is an impressive space with beautiful stone and brick walls. This level has much to offer with a large recreation room with spacious seating area for TV viewing, or game playing. Currently there is a pool table, foosball table, card game table, and a commercial pinball machine. In addition, there is a kitchenette with bar and a large island with seating for four, a dining room area, two bedrooms with ensuite baths, a spa room (or another bedroom), half bath, laundry room and large storage room.



Outdoor areas are found on both level two and level three. On level two is a gorgeous, heated lap pool with hot tub and relaxation areas. The third level is a 2018 addition to the building and provides a guest suite, office, or party space. Here there is a service kitchen with an overhead door to access the covered outdoor kitchen and dining area. The roof top gathering spaces are fabulous and akin to your favorite resort. On both levels are built-in wall planters with multiple rows of individual irrigated pots to create a wall of greenery or flowers.







429 North Euclid Avenue

ST. LOUIS, MO 63108

BEDS: 5 | BATHS: 5 FULL 4 HALF

ABOVE SQ. FT: 9,287 | TOTAL LIVING AREA: 13,549

Dielmann | **Sotheby's**
INTERNATIONAL REALTY

Nothing Compares to What's Next.

8301 Maryland Avenue, Suite 100, Clayton, MO 63105
o: 314.725.0009 | dielmannsir.com | @dielmannsir



Meg Coghlan

Global Real Estate Advisor

314.640.6343

meg.coghlan@dielmannsir.com