

# 108,240 SF Available

Adjacent to Downtown Greenville

Metts Street  
Greenville, SC 29609  
Site #1938

Excellent last mile location!



## Contact Us

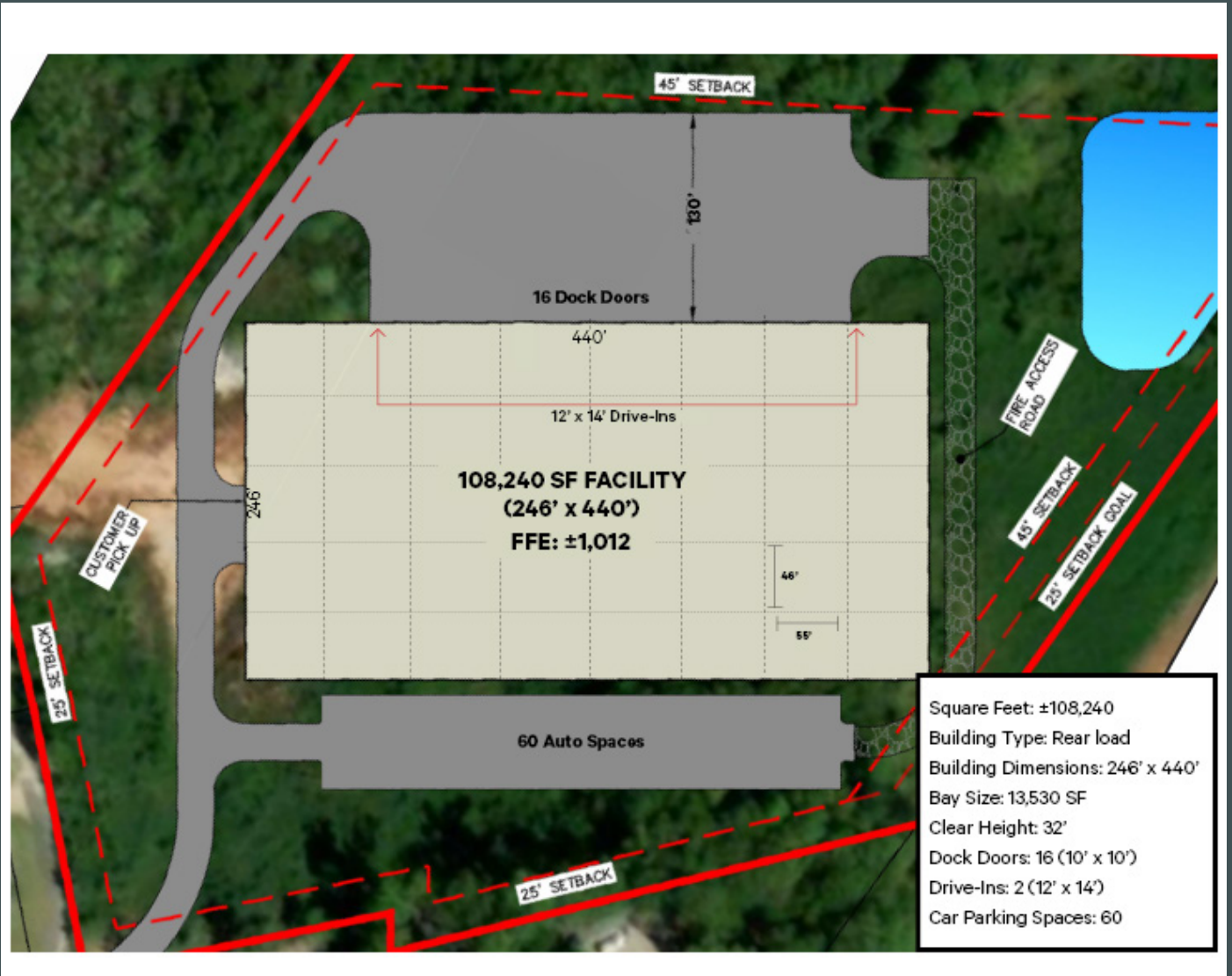
**TREY PENNINGTON, SIOR**  
Executive Vice President  
+1 864 527 6095  
treypennington@cbre.com

**JEFF BENEDICT**  
Vice President  
+1 864 235 1961  
jeff.benedict@cbre.com

**TRIPP SPEAKS**  
Associate  
+1 864 235 6196  
tripp.speaks@cbre.com

±108,240 SF Available

Metts Street | Greenville, SC 29609



## Property Details

- + Size: ±108,240 SF
- + Acre: ±8.59
- + Rear Load
- + Tilt-up concrete panels
- + Column Spacing: 55' x 46'
- + Bay Size: 13,530 SF
- + Light Industrial Zoning
- + Building Depth: 246'
- + Truck Court Depth: 130'
- + Sprinkler: ESFR
- + 3 Phase Power
- + Auto Spaces: 60
- + 36,900 VPD on Poinsett Highway
- + Utilities:
  - Power: Duke Energy
  - Gas: Piedmont Natural Gas
  - Water: Greenville Water System
  - Sewer: Parker Sewer & Fire

32'

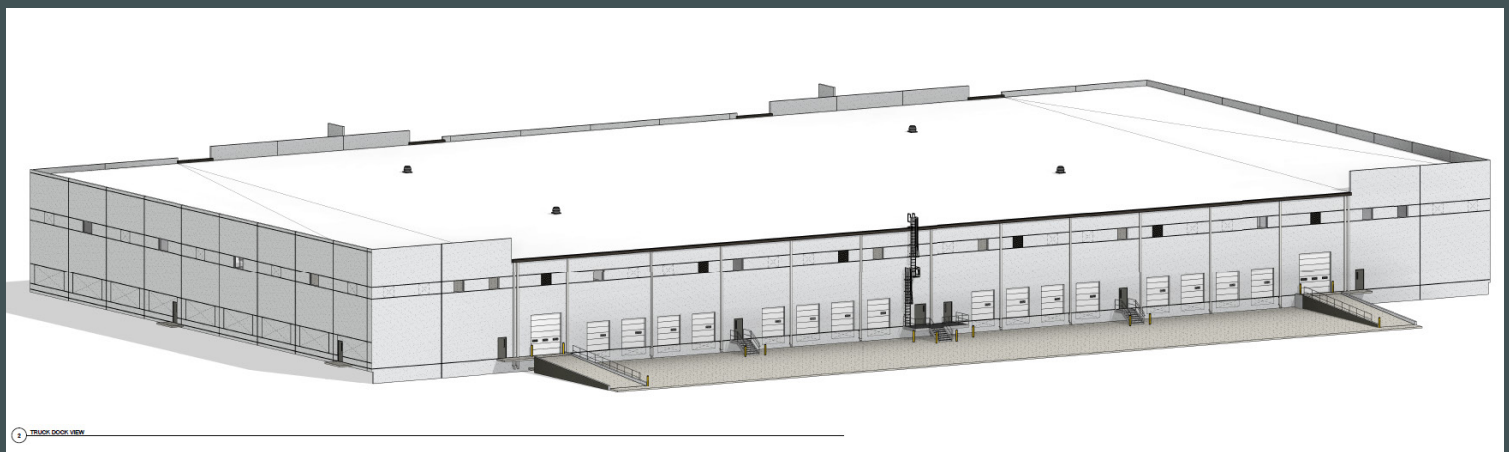
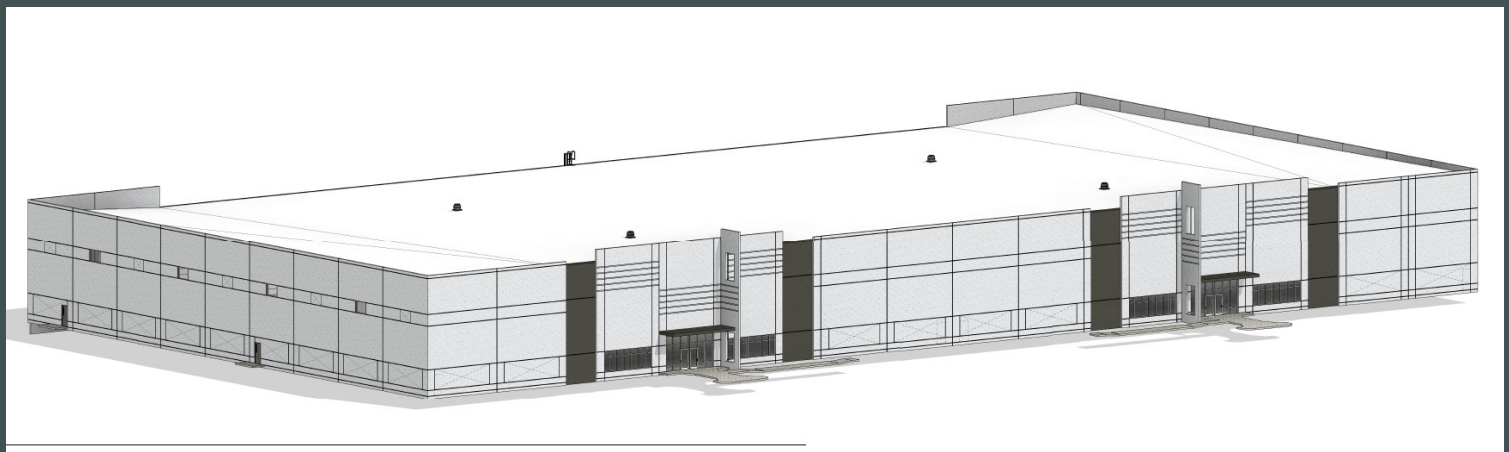
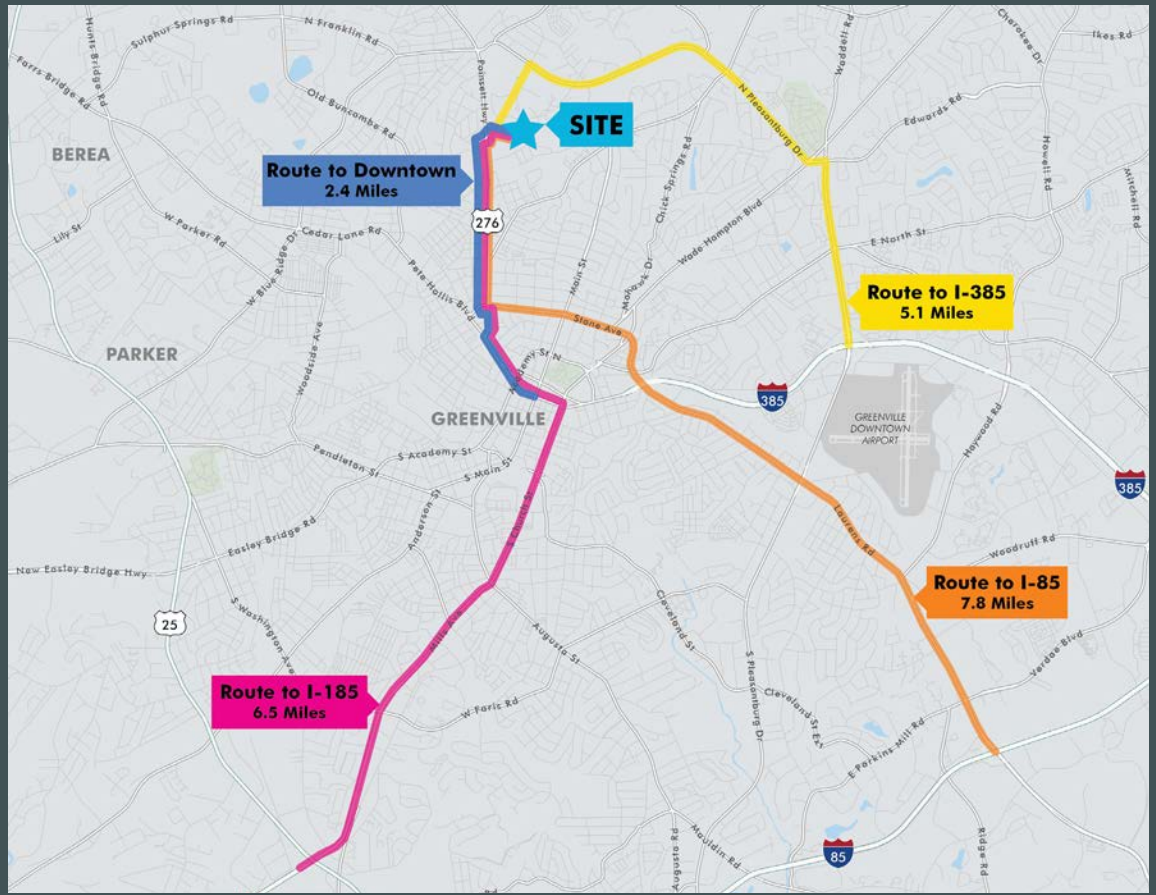
Clear Height

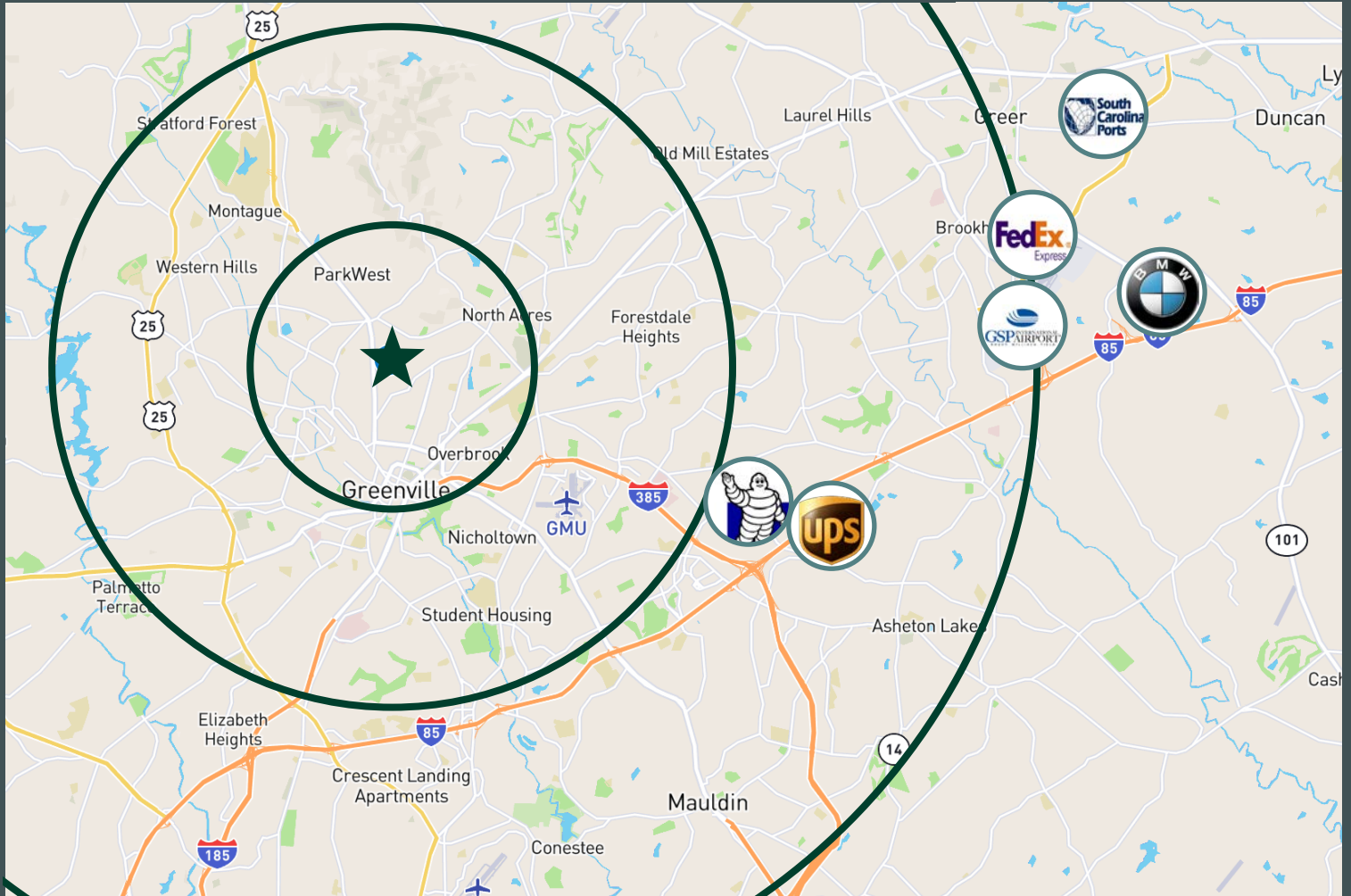
16

Dock Doors

2

Drive-In Doors





## Location Details

- Downtown Greenville: 2.4 Miles
- UPS Freight: 13.7 Miles
- SC Inland Port: 13.9 Miles
- GSP Airport: 14.1 Miles
- FedEx Ship Center: 14.1 Miles
- BMW: 16.3 Miles
- Downtown Spartanburg: 33.8 Miles

	3 MILES	5 MILES	10 MILES
POPULATION	73,663	159,718	382,257
DAYTIME POPULATION	91,871	191,893	432,705
AVERAGE HH INCOME	\$75,552	\$78,375	\$85,215
LABOR FORCE	36,925	81,412	197,267
BACHELOR'S DEGREE OR HIGHER	10,872	24,572	62,296
BUSINESSES	4,275	8,271	16,332

© 2021 CBRE, Inc. All rights reserved. This information has been obtained from sources believed reliable, but has not been verified for accuracy or completeness. You should conduct a careful, independent investigation of the property and verify all information. Any reliance on this information is solely at your own risk. CBRE and the CBRE logo are service marks of CBRE, Inc. All other marks displayed on this document are the property of their respective owners, and the use of such logos does not imply any affiliation with or endorsement of CBRE. Photos herein are the property of their respective owners. Use of these images without the express written consent of the owner is prohibited.