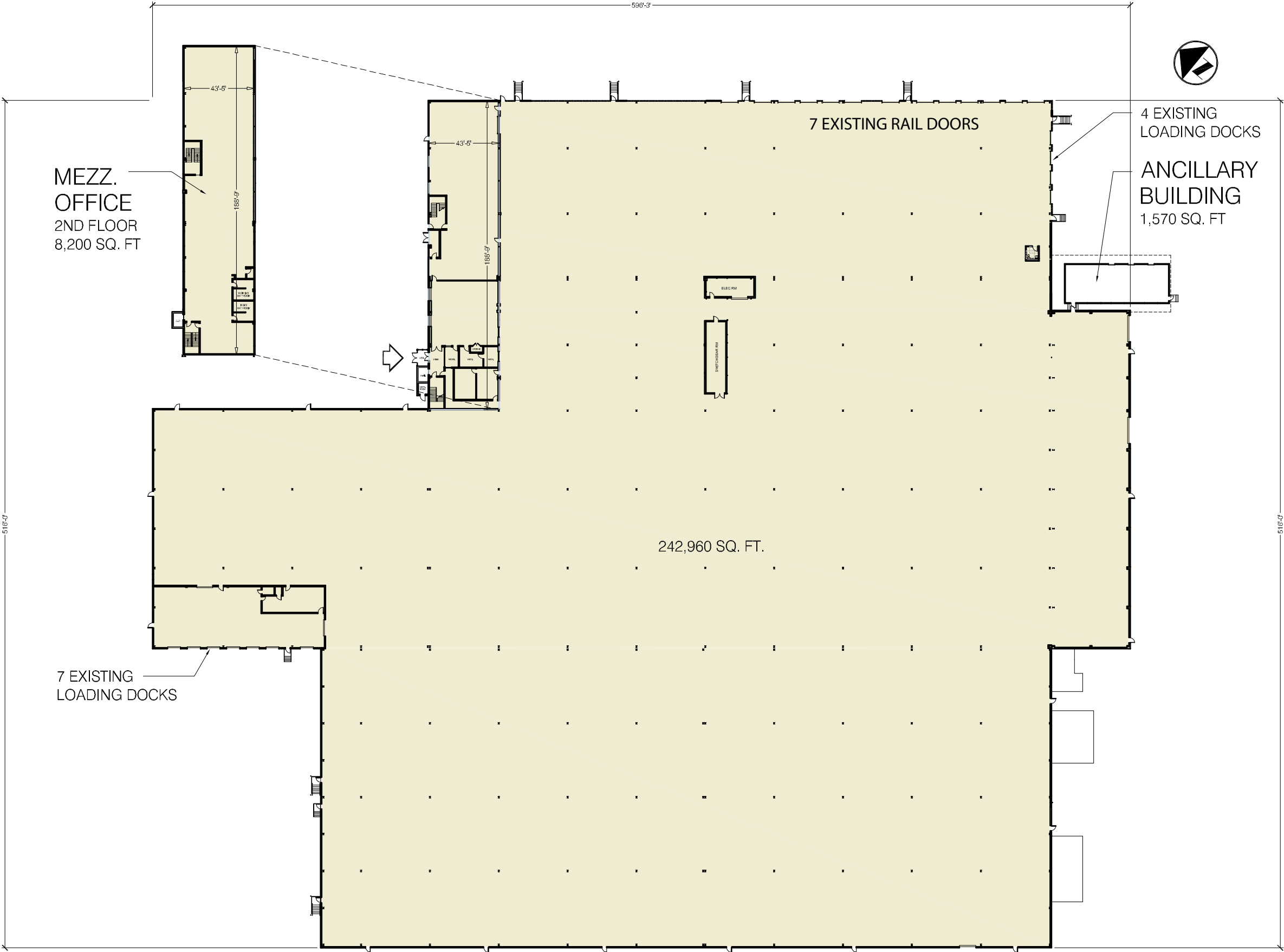


594 Can Do Expressway

Hazleton, PA 18202

±120,000 - 242,960 SF Rail Served Facility Available for Sublease





Property Specifications

| | |
|-----------------|--|
| Sublease Term | Through November 2027 |
| Building Size | 242,960 SF |
| Available Space | ±120,000 - 242,960 SF |
| Office Area | ±8,200 SF |
| Dock Doors | 11 Dock doors with 55,000 lb. hydraulic levelers |
| Car Parking | 100 spaces |
| Trailer Parking | 8 spaces |
| Column Spacing | 42' x 48' |
| Ceiling Height | 32' |
| Sprinkler | Wet |
| Lighting | LED fixtures |
| Power | 3,000a 480/277v, 3 phase |
| Rail Doors | 7 doors |

594 Can Do Expressway

Hazleton, PA 18202

For Sublease



Contact Us

Anthony Gruenling, Jr.

Senior Vice President
+1 610 251 5108
tony.gruenling@cbre.com
Licensed: PA

Vincent Ranalli

Executive Vice President
T +1 610 251 5194
vincent.ranalli@cbre.com
Licensed: PA, NJ

Leah Balerno

Senior Vice President
+1 610 386 6215
leah.balerno@cbre.com
Licensed: PA, NJ

Andrew Belcher

Vice President
T +1 484 567 2475
andrew.belcher@cbre.com
Licensed: PA, NJ

CBRE, Inc.

555 E. Lancaster Avenue,
Suite 120
Radnor, PA 19087
+1 610 251 0820
Licensed Real Estate Broker

© 2024 CBRE, Inc. All rights reserved. This information has been obtained from sources believed reliable, but has not been verified for accuracy or completeness. You should conduct a careful, independent investigation of the property and verify all information. Any reliance on this information is solely at your own risk. CBRE and the CBRE logo are service marks of CBRE, Inc. All other marks displayed on this document are the property of their respective owners, and the use of such logos does not imply any affiliation with or endorsement of CBRE. Photos herein are the property of their respective owners. Use of these images without the express written consent of the owner is prohibited.