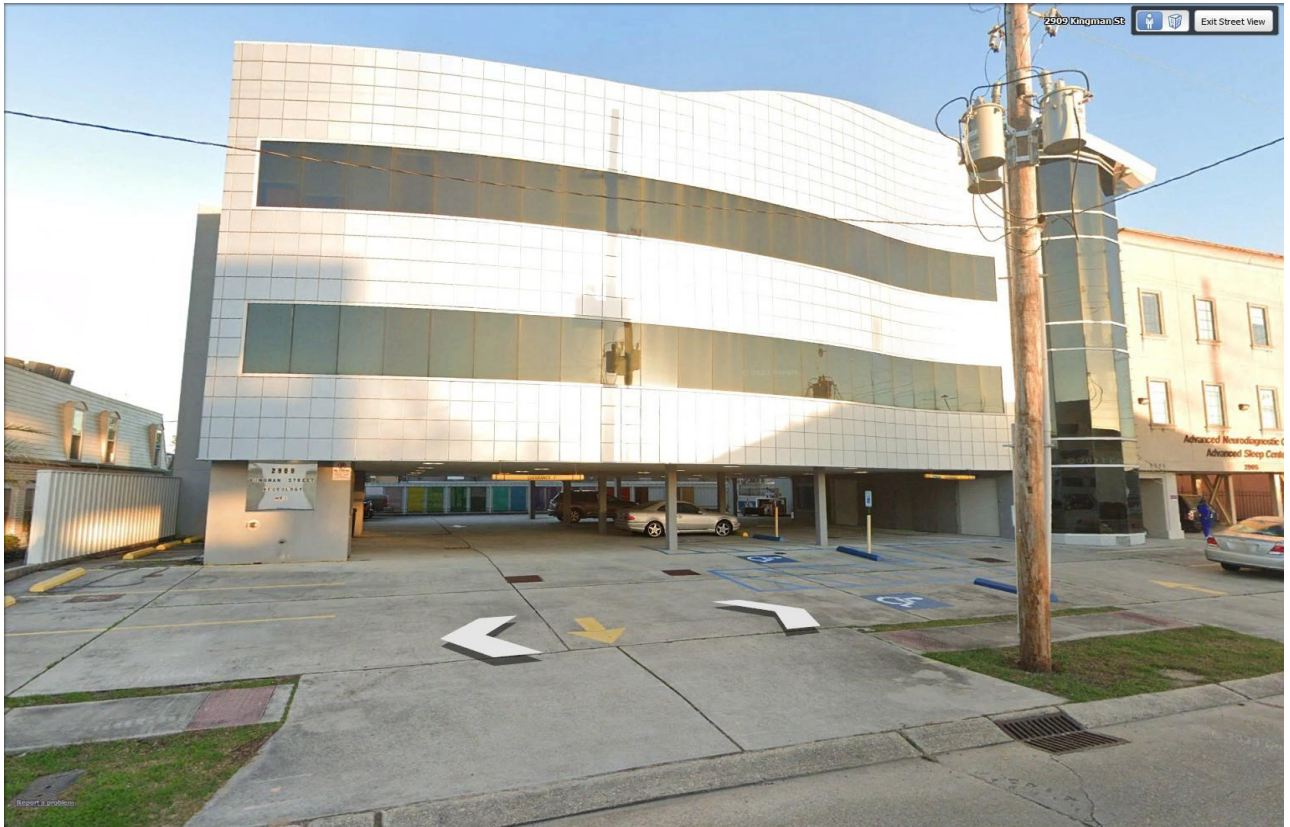


REAL ESTATE CONSORTIUM

COMMERCIAL SERVICES

# MEDICAL/PROFESSIONAL FOR LEASE/ STATE OF THE ART



2909 KINGMAN STREET, METAIRIE, LA. 70006

6,425 SQUARE FEET

Lane Hindermann  
REAL ESTATE CONSORTIUM  
504-264-7331 direct  
307-690-1144 cell  
lhindermann@gmail.com  
www.lanerec.com

HEART OF METAIRIE; BLOCK FROM OCSHNER'S  
SUPER CLINIC ; SURROUNDED BY SURGEONS,  
DENTIST, PRIMARY CARE CLINICS.

2909 KINGMAN STREET:

6,425 SQUARE FEET

Elevator access

Off street/covered parking

Waiting

Reception

Business office

2 doctors offices

6 exam rooms

Storage

Breakroom

HC restrooms

Over 1,000 s.f. for expansion: i.e. surgery and/or procedure

Building has back up generator

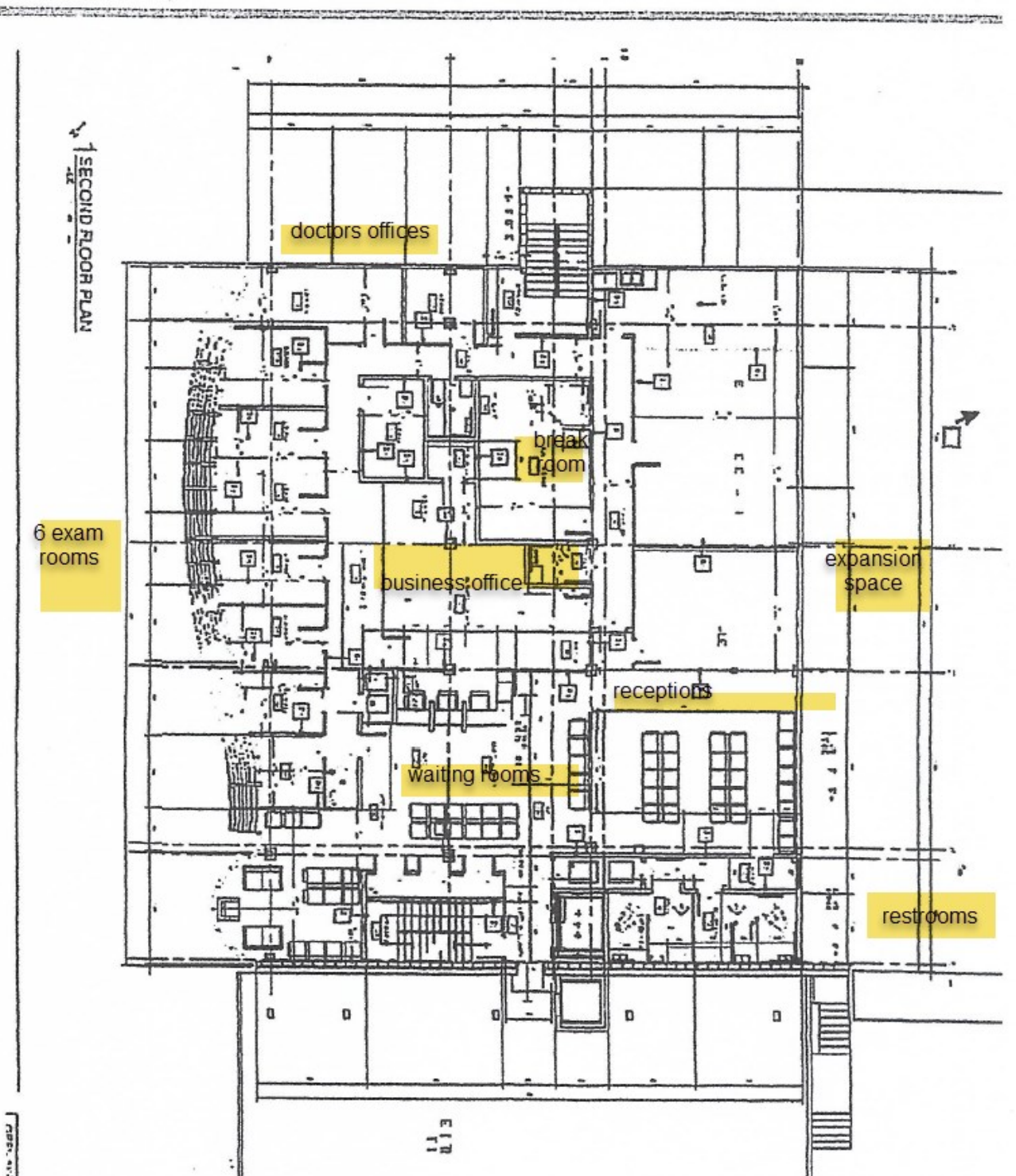
Rental rate:

\$24.00 per square foot

Plus utilities and janitorial and prorate of taxes and insurance.

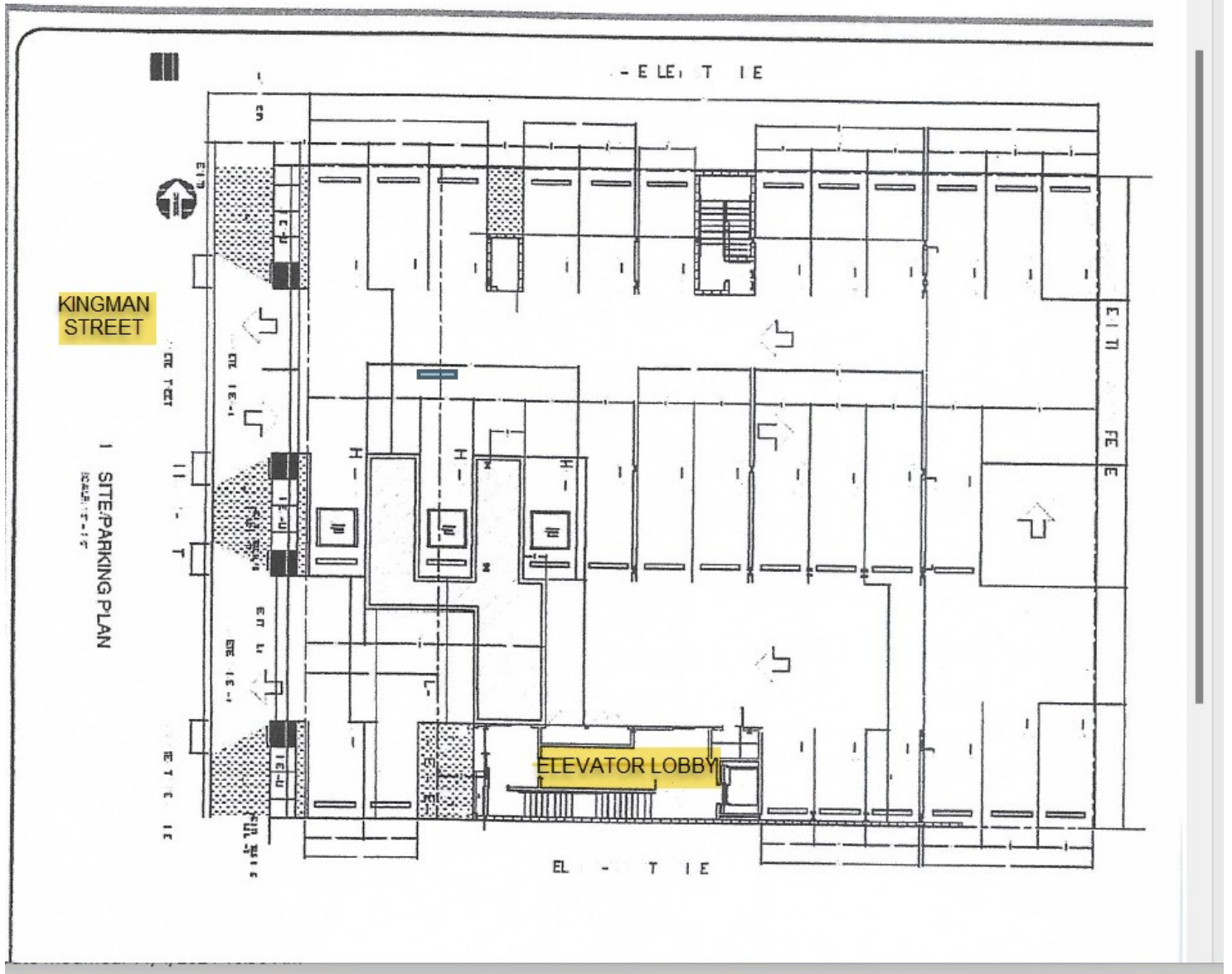
Taxes: \$2.00 psf

Insurance \$ 2.25 psf



2909 KINGMAN STREET  
SECOND FLOOR  
ELEVATOR ACCESS





**2909 KINGMAN STREET  
FIRST FLOOR PARKING AND  
ELEVATOR ACCESS**